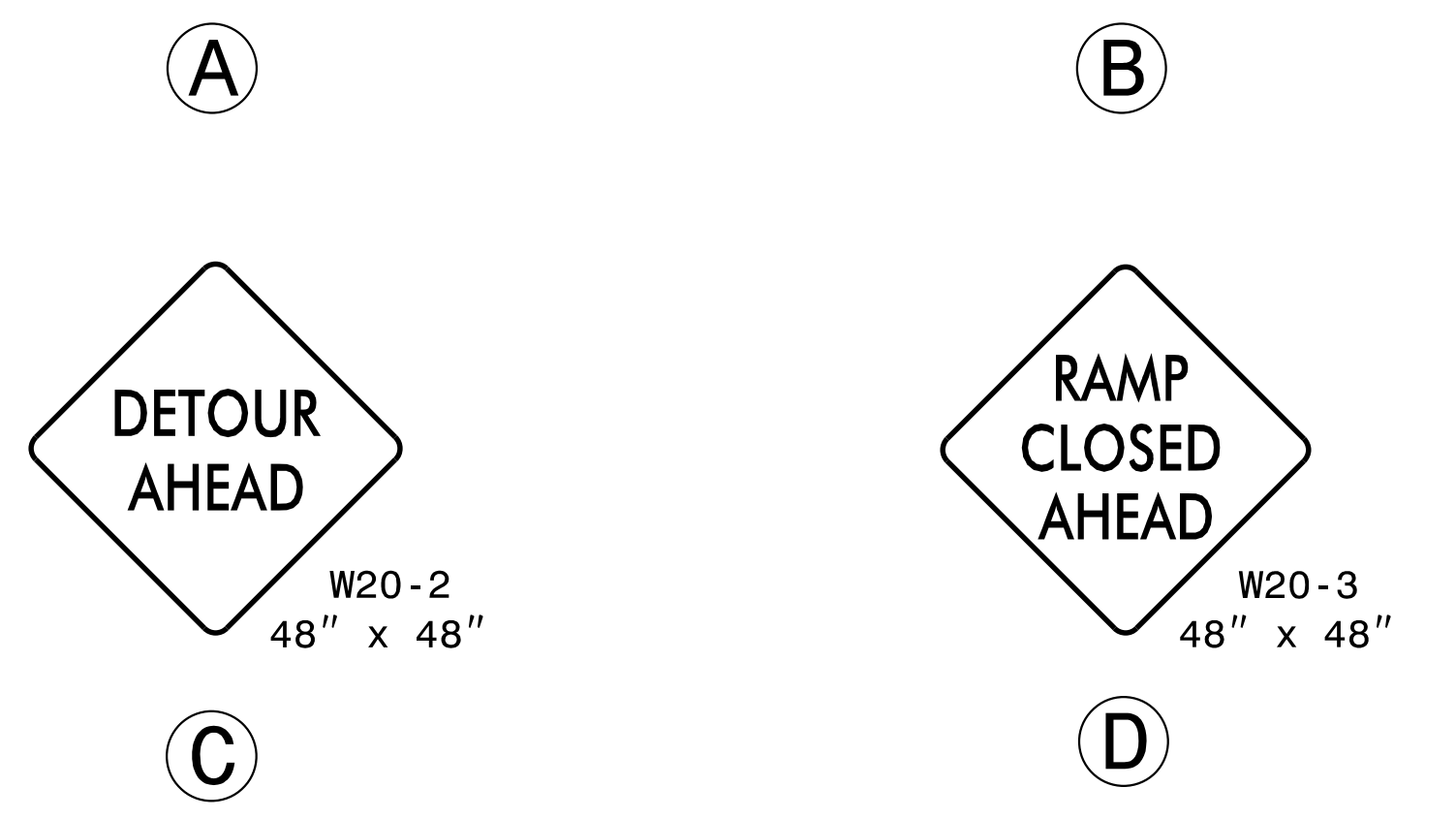
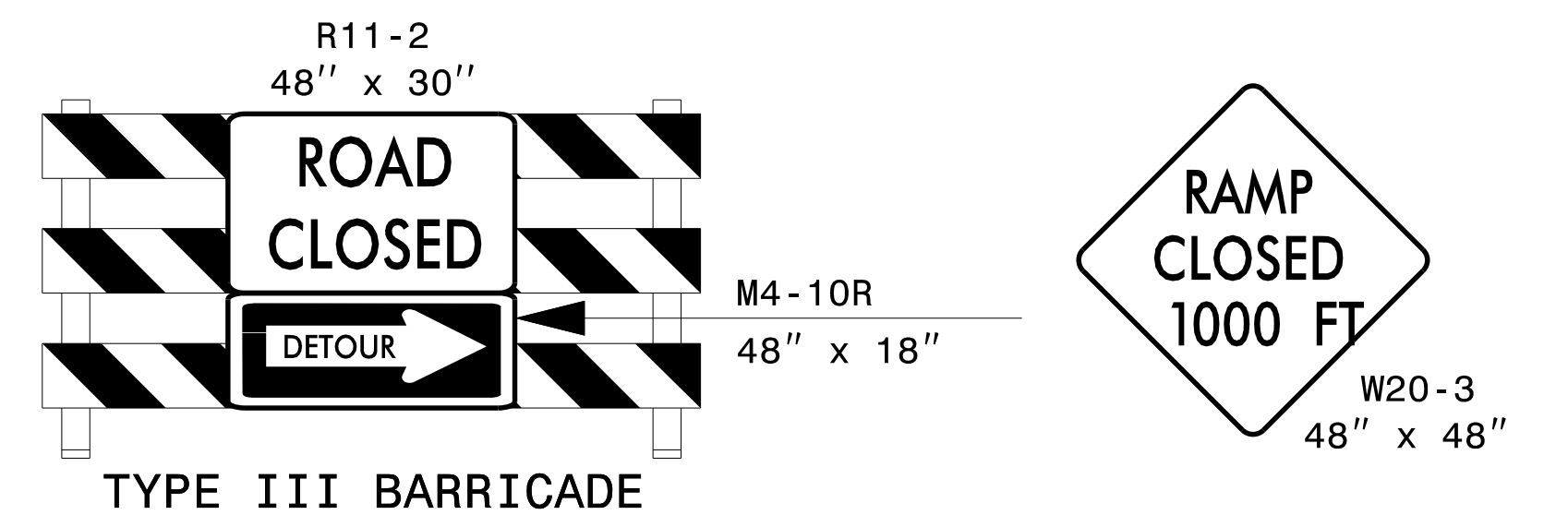


**11TH ST ENTRANCE
 DETOUR ROUTE**

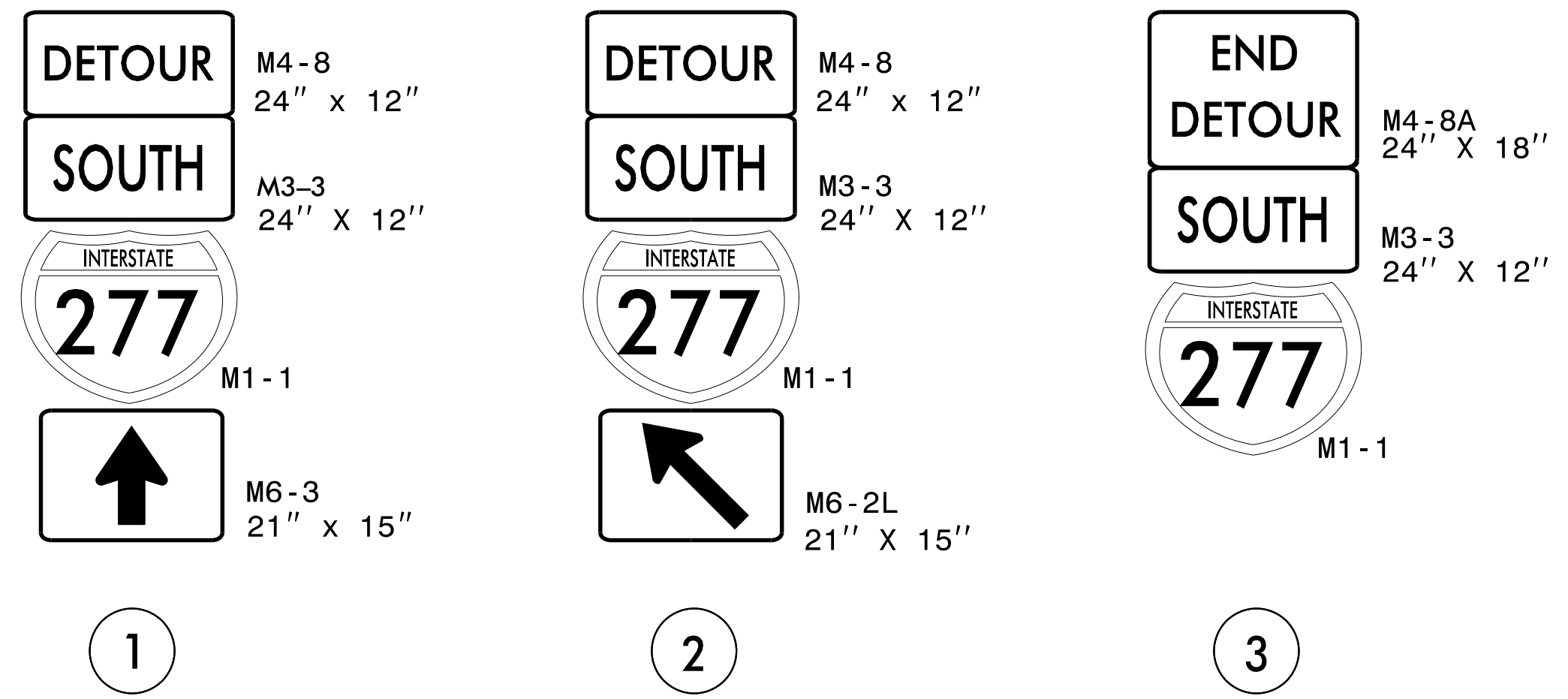


MESSAGE NO. 1	MESSAGE NO. 2
I-277 SB ON RAMP CLOSED	FOLLOW I-277 SB DETOUR

CHANGEABLE MESSAGE SIGN

DETOUR DESCRIPTION:
 E. 11TH ST TO I-277 SB ENTRANCE RAMP

NOTES:
 TRAFFIC CONTROL DEVICES ① THRU ③ AND ①A THRU ①E SHALL BE INSTALLED PER ENGINEER'S INSTRUCTIONS.



DocuSigned by

**DOCUMENT NOT CONSIDERED FINAL
 UNLESS ALL SIGNATURES COMPLETED**

DIVISION OF HIGHWAYS
 STATE OF NORTH CAROLINA

 WORK ZONE TRAFFIC CONTROL

**OFFSITE DETOUR 39
 SIGNING AND ROAD
 CLOSURE SIGNING**

8/5/2021 2:00:16 PM I-5746CD-TMP-13-OFFSITE DETOUR 39 SIGNING AND ROAD CLOSURE SIGNING.dgn User: jduke