


PROJ. REFERENCE NO.	SHEET NO.
I-5746C	TMP-6B
 Kisinger Campo & Associates Corp. 301 Fayetteville St., Suite 1500 Raleigh, NC 27601 John P. Mazeres, PE No. 043935 NC Firm License No. C-1506	

BRIDGE REHABILITATION

## PHASING NOTES

STEP 4: USE CHARLOTTE WORK ZONE TRAFFIC CONTROL HANDBOOK DIAGRAM 2 TO CLOSE THE NORTHBOUND SIDEWALK ON CHURCH ST WITHIN THE BRIDGE WORK AREA UNDER LOCATION C-5 (BRIDGE # 328). CROSS PEDESTRIANS AT 11TH ST FROM SOUTH TO NORTH, CROSS PEDESTRIANS BACK AT 12TH ST FROM NORTH TO SOUTH. PERFORM UNDER DECK BRIDGE OPERATIONS AS REQUIRED PER BRIDGE PLANS AT LOCATION C-5 (BRIDGE #328). AT THE END OF EACH WORK PERIOD REOPEN THE ROADWAY TO TRAFFIC.

STEP 5: REPEAT STEP 4 UNTIL ALL WORK IS COMPLETE.

STEP 6: USE CHARLOTTE WORK ZONE TRAFFIC CONTROL HANDBOOK DIAGRAM 2 TO CLOSE THE SOUTHBOUND SIDEWALK ON CHURCH ST WITHIN THE BRIDGE WORK AREA UNDER LOCATION C-5 (BRIDGE # 328). CROSS PEDESTRIANS AT 12TH ST FROM NORTH TO SOUTH, CROSS PEDESTRIANS BACK AT 11TH ST FROM SOUTH TO NORTH. PERFORM UNDER DECK BRIDGE OPERATIONS AS REQUIRED PER BRIDGE PLANS AT LOCATION C-5 (BRIDGE #328). AT THE END OF EACH WORK PERIOD REOPEN THE ROADWAY TO TRAFFIC.

STEP 7: REPEAT STEP 6 UNTIL ALL WORK IS COMPLETE.

LOCATION: C-6 (BRIDGE # 330) NORTHBOUND

STEP 1: USE TMP-44, TMP-8 FOR OFFSITE DETOUR 34 AND NCDOT RSD 1101.02 SHEET 8 OF 14 TO CLOSE LANES L1, L2, L3 AND L4 OF I-277 NB, AND RAMP #34. PLACE DETOUR SIGNING FOR CLOSURES ALONG GRAHAM ST (US 29), 10TH ST, 12TH ST, CHURCH ST, RAMP #33 AND RAMP #34. THIS OPERATION WILL CLOSE RAMP #34. COVER SIGNS UNTIL OFFSITE DETOUR IS READY FOR OPERATION. PERFORM BRIDGE DECK PRESERVATION OPERATIONS AS REQUIRED IN BRIDGE PLANS ON I-277 AT LOCATION C-6 (BRIDGE #330). AT THE END OF EACH WORK PERIOD REOPEN THE ROADWAY AND BRIDGE TO TRAFFIC.

STEP 2: USE TMP-45, TMP-7 FOR OFFSITE DETOUR 33 AND NCDOT RSD 1101.02 SHEET 8 OF 14 TO CLOSE LANES L3, L4 AND L5 OF I-277 NB AND RAMP #33. PLACE DETOUR SIGNING FOR CLOSURES ALONG GRAHAM ST (US 29), 10TH ST, STATESVILLE AV, CHURCH ST, RAMP #33 AND RAMP #34. THIS OPERATION WILL CLOSE RAMP #33. COVER SIGNS UNTIL OFFSITE DETOUR IS READY FOR OPERATION. PERFORM BRIDGE DECK PRESERVATION OPERATIONS AS REQUIRED IN BRIDGE PLANS ON I-277 AT LOCATION C-6 (BRIDGE #330). AT THE END OF EACH WORK PERIOD REOPEN THE ROADWAY AND BRIDGE TO TRAFFIC.

STEP 3: REPEAT STEPS 1 AND 2 UNTIL ALL WORK IS COMPLETE.

STEP 4: USE TMP-28 AND NCDOT RSD 1101.02 SHEET 3 OF 14 TO INSTALL LANE CLOSURE SIGNS AND DEVICES TO CLOSE THE NORTHBOUND OUTSIDE LANE AND SIDEWALK OF US 29 (GRAHAM ST) DURING ALLOWABLE LANE CLOSURE TIMES. USE CHARLOTTE WORK ZONE TRAFFIC CONTROL HANDBOOK DIAGRAM 2 TO CLOSE THE NORTHBOUND SIDEWALK WITHIN THE BRIDGE WORK AREA UNDER LOCATION C-6 (BRIDGE # 330). CROSS PEDESTRIANS AT 11TH ST FROM SOUTH TO NORTH, CROSS PEDESTRIANS BACK AT 12TH ST FROM NORTH TO SOUTH. PERFORM UNDER DECK BRIDGE OPERATIONS AS REQUIRED PER BRIDGE PLANS AT LOCATION C-6 (BRIDGE #330). AT THE END OF EACH WORK PERIOD REOPEN THE ROADWAY TO TRAFFIC.

STEP 5: REPEAT STEP 4 UNTIL ALL WORK IS COMPLETE.

STEP 6: USE TMP-29, NCDOT RSD 1101.02 SHEET 3 OF 14 TO INSTALL LANE CLOSURE SIGNS AND DEVICES TO CLOSE THE SOUTHBOUND OUTSIDE LANE AND SIDEWALK OF US 29 (GRAHAM ST) DURING ALLOWABLE LANE CLOSURE TIMES. USE CHARLOTTE WORK ZONE TRAFFIC CONTROL HANDBOOK DIAGRAM 2 TO CLOSE THE SOUTHBOUND SIDEWALK WITHIN THE BRIDGE WORK AREA UNDER LOCATION C-6 (BRIDGE # 330). CROSS PEDESTRIANS AT 12TH ST FROM SOUTH TO NORTH, CROSS PEDESTRIANS BACK AT 11TH ST FROM NORTH TO SOUTH. PERFORM UNDER DECK BRIDGE OPERATIONS AS REQUIRED PER BRIDGE PLANS AT LOCATION C-6 (BRIDGE #330). AT THE END OF EACH WORK PERIOD REOPEN THE ROADWAY TO TRAFFIC.

STEP 7: REPEAT STEP 6 UNTIL ALL WORK IS COMPLETE.

STEP 8: USE TMP-30 AND NCDOT RSD 1101.02 SHEET 3 OF 14 TO INSTALL LANE CLOSURE SIGNS AND DEVICES TO CLOSE THE CENTER LANES OF US 29 (GRAHAM ST) DURING ALLOWABLE LANE CLOSURE TIMES. PERFORM UNDER DECK BRIDGE OPERATIONS AS REQUIRED PER BRIDGE PLANS AT LOCATION C-6 (BRIDGE #330). AT THE END OF EACH WORK PERIOD REOPEN THE ROADWAY TO TRAFFIC.

STEP 9: REPEAT STEP 8 UNTIL ALL WORK IS COMPLETE.

LOCATION: D-7 (BRIDGE # 332) NORTHBOUND

STEP 1: USE TMP-46, TMP-8 FOR OFFSITE DETOUR 34 AND NCDOT RSD 1101.02 SHEET 8 OF 14 TO CLOSE LANES L1, L2 AND L3 OF I-277 NB AND RAMP #34. PLACE DETOUR SIGNING FOR CLOSURES ALONG GRAHAM ST (US 29), 10TH ST, 12TH ST, CHURCH ST, RAMP #33 AND RAMP #34. THIS OPERATION WILL CLOSE RAMP #34. COVER SIGNS UNTIL OFFSITE DETOUR IS READY FOR OPERATION. PERFORM BRIDGE DECK PRESERVATION OPERATIONS AS REQUIRED IN BRIDGE PLANS ON I-277 AT LOCATION D-7 (BRIDGE #332). AT THE END OF EACH WORK PERIOD REOPEN THE ROADWAY TO TRAFFIC.

STEP 2: USE TMP-47, TMP-7 FOR OFFSITE DETOUR 33 AND NCDOT RSD 1101.02 SHEET 8 OF 14 TO CLOSE LANES L2, L3 AND L4 OF I-277 NB AND RAMP #33. PLACE DETOUR SIGNING FOR CLOSURES ALONG GRAHAM ST (US 29), 10TH ST, STATESVILLE AV, CHURCH ST, RAMP #33 AND RAMP #34. THIS OPERATION WILL CLOSE RAMP #33. COVER SIGNS UNTIL OFFSITE DETOUR IS READY FOR OPERATION. PERFORM BRIDGE DECK PRESERVATION OPERATIONS AS REQUIRED IN BRIDGE PLANS ON I-277 AT LOCATION D-7 (BRIDGE #332). AT THE END OF EACH WORK PERIOD REOPEN THE ROADWAY TO TRAFFIC.

STEP 3: REPEAT STEPS 1 AND 2 UNTIL ALL WORK IS COMPLETE.

STEP 4: USE TMP-31 AND NCDOT RSD 1101.02 SHEET 3 OF 14 TO INSTALL LANE CLOSURE SIGNS AND DEVICES TO CLOSE THE WESTBOUND INSIDE LANE OF NC MUSIC FACTORY BLVD DURING ALLOWABLE LANE CLOSURE TIMES. PERFORM UNDER DECK BRIDGE OPERATIONS AS REQUIRED PER BRIDGE PLANS AT LOCATION D-7 (BRIDGE #332). AT THE END OF EACH WORK PERIOD REOPEN THE ROADWAY TO TRAFFIC.

STEP 5: REPEAT STEP 4 UNTIL ALL WORK IS COMPLETE.

STEP 6: USE NCDOT RSD 1101.02 SHEET 3 OF 14 TO INSTALL LANE CLOSURE SIGNS AND DEVICES TO CLOSE THE WESTBOUND OUTSIDE LANE OF NC MUSIC FACTORY BLVD DURING ALLOWABLE LANE CLOSURE TIMES. PERFORM UNDER DECK BRIDGE OPERATIONS AS REQUIRED PER BRIDGE PLANS AT LOCATION D-7 (BRIDGE #332). AT THE END OF EACH WORK PERIOD REOPEN THE ROADWAY TO TRAFFIC.

STEP 7: REPEAT STEP 6 UNTIL ALL WORK IS COMPLETE.

STEP 8: USE TMP-32 AND NCDOT RSD 1101.02 SHEET 3 OF 14 TO INSTALL LANE CLOSURE SIGNS AND DEVICES TO CLOSE THE EASTBOUND OUTSIDE LANE OF NC MUSIC FACTORY BLVD DURING ALLOWABLE LANE CLOSURE TIMES. PERFORM UNDER DECK BRIDGE OPERATIONS AS REQUIRED PER BRIDGE PLANS AT LOCATION D-7 (BRIDGE #332). AT THE END OF EACH WORK PERIOD REOPEN THE ROADWAY TO TRAFFIC.

STEP 9: REPEAT STEP 8 UNTIL ALL WORK IS COMPLETE.

STEP 10: USE TMP-33 AND NCDOT RSD 1101.02 SHEET 3 OF 14 TO INSTALL LANE CLOSURE SIGNS AND DEVICES TO CLOSE THE EASTBOUND INSIDE LANE OF NC MUSIC FACTORY BLVD DURING ALLOWABLE LANE CLOSURE TIMES. PERFORM UNDER DECK BRIDGE OPERATIONS AS REQUIRED PER BRIDGE PLANS AT LOCATION D-7 (BRIDGE #332). AT THE END OF EACH WORK PERIOD REOPEN THE ROADWAY TO TRAFFIC.

STEP 11: REPEAT STEP 10 UNTIL ALL WORK IS COMPLETE.

STEP 12: USE NCDOT RSD 1101.02 SHEET 1 OF 14 TO INSTALL LANE CLOSURE SIGNS, DEVICES AND A FLAGGING OPERATION TO CLOSE THE NORTHBOUND LANE OF JOHNSON ST DURING ALLOWABLE LANE CLOSURE TIMES. PERFORM UNDER DECK BRIDGE OPERATIONS AS REQUIRED PER BRIDGE PLANS AT LOCATION D-7 (BRIDGE #332). AT THE END OF EACH WORK PERIOD REOPEN THE ROADWAY TO TRAFFIC.

STEP 13: REPEAT STEP 12 UNTIL ALL WORK IS COMPLETE.

STEP 14: USE NCDOT RSD 1101.02 SHEET 1 OF 14 TO INSTALL LANE CLOSURE SIGNS, DEVICES AND A FLAGGING OPERATION TO CLOSE THE SOUTHBOUND LANE OF JOHNSON ST DURING ALLOWABLE LANE CLOSURE TIMES. PERFORM UNDER DECK BRIDGE OPERATIONS AS REQUIRED PER BRIDGE PLANS AT LOCATION D-7 (BRIDGE #332). AT THE END OF EACH WORK PERIOD REOPEN THE ROADWAY TO TRAFFIC.

STEP 15: REPEAT STEP 14 UNTIL ALL WORK IS COMPLETE.

LOCATION: D-7 (BRIDGE # 332) SOUTHBOUND

STEP 1: USE TMP-48, TMP-54, TMP-6C, TMP-17 FOR OFFSITE DETOUR FOR I-77 NB RAMP, AND NCDOT RSD 1101.02 SHEET 3 OF 14 TO CLOSE LANES L1, L2 AND L3 OF I-277 SB, THE I-77 NB RAMP, AND THE I-77 SB HOT LANES. PLACE DETOUR SIGNING FOR CLOSURES ALONG I-77, LA SALLE ST AND I-277. THIS OPERATION WILL CLOSE THE I-77 NB RAMP TO I-277 SB AND THE I-77 SB HOT LANES. COVER SIGNS UNTIL OFFSITE DETOUR IS READY FOR OPERATION. PERFORM BRIDGE DECK PRESERVATION OPERATIONS AS REQUIRED IN BRIDGE PLANS ON I-277 AT LOCATION D-7 (BRIDGE #332). AT THE END OF EACH WORK PERIOD REOPEN THE ROADWAY AND BRIDGE TO TRAFFIC.

STEP 2: USE TMP-49, TMP-54, TMP-6C, TMP-17 FOR OFFSITE DETOUR I-77 NB RAMP, AND NCDOT RSD 1101.02 SHEET 3 OF 14 TO CLOSE LANES L2, L3 AND L4 OF I-277 SB, THE I-77 NB RAMP, AND THE I-77 SB HOT LANES. PLACE DETOUR SIGNING FOR CLOSURES ALONG I-77, LA SALLE ST AND I-277. THIS OPERATION WILL CLOSE THE I-77 NB RAMP TO I-277 SB AND I-77 SB HOT LANES. COVER SIGNS UNTIL OFFSITE DETOUR IS READY FOR OPERATION. PERFORM BRIDGE DECK PRESERVATION OPERATIONS AS REQUIRED IN BRIDGE PLANS ON I-277 AT LOCATION D-7 (BRIDGE #332). AT THE END OF EACH WORK PERIOD REOPEN THE ROADWAY AND BRIDGE TO TRAFFIC.

STEP 3: REPEAT STEPS 1 AND 2 UNTIL ALL WORK IS COMPLETE.

LOCATION: C-6 (BRIDGE # 330) SOUTHBOUND

STEP 1: USE TMP-50, TMP-51, TMP-54, TMP-6C, AND NCDOT RSD 1101.02 SHEET 3 OF 14 TO CLOSE LANES L1, L2 AND L3 OF I-277 SB AND I-77 SB HOT LANES. THIS OPERATION WILL CLOSE THE I-77 SB HOT LANES. PERFORM BRIDGE DECK PRESERVATION OPERATIONS AS REQUIRED IN BRIDGE PLANS ON I-277 AT LOCATION C-6 (BRIDGE #330). AT THE END OF EACH WORK PERIOD REOPEN THE ROADWAY AND BRIDGE TO TRAFFIC.

STEP 2: USE TMP-52, TMP-53, TMP-54, TMP-17 FOR OFFSITE DETOUR FOR I-77 NB RAMP, TMP-16 FOR OFFSITE DETOUR 42, TMP-6C, AND NCDOT RSD 1101.02 SHEET 3 OF 14 TO CLOSE LANES L2, L3 AND L4 OF I-277 SB ALONG WITH RAMP #42, THE I-77 NB RAMP, AND THE I-77 SB HOT LANES. PLACE DETOUR SIGNING FOR CLOSURES ALONG I-77, LA SALLE ST, I-277, CHURCH ST, RAMP #41 AND RAMP #42. THIS OPERATION WILL CLOSE THE I-77 NB RAMP AND RAMP #42 AND I-77 SB HOT LANES. COVER SIGNS UNTIL OFFSITE DETOUR IS READY FOR OPERATION. PERFORM BRIDGE DECK PRESERVATION OPERATIONS AS REQUIRED IN BRIDGE PLANS ON I-277 AT LOCATION C-6 (BRIDGE #330). AT THE END OF EACH WORK PERIOD REOPEN THE ROADWAY AND BRIDGE TO TRAFFIC.

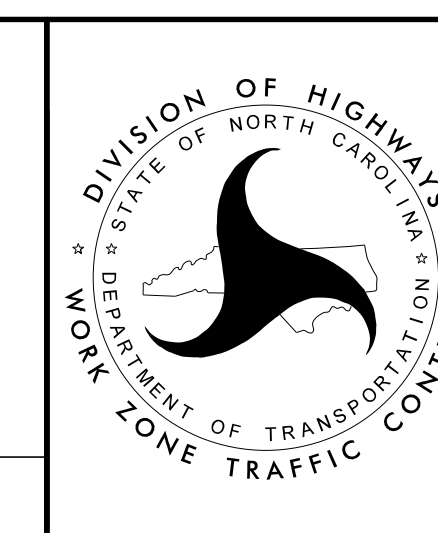
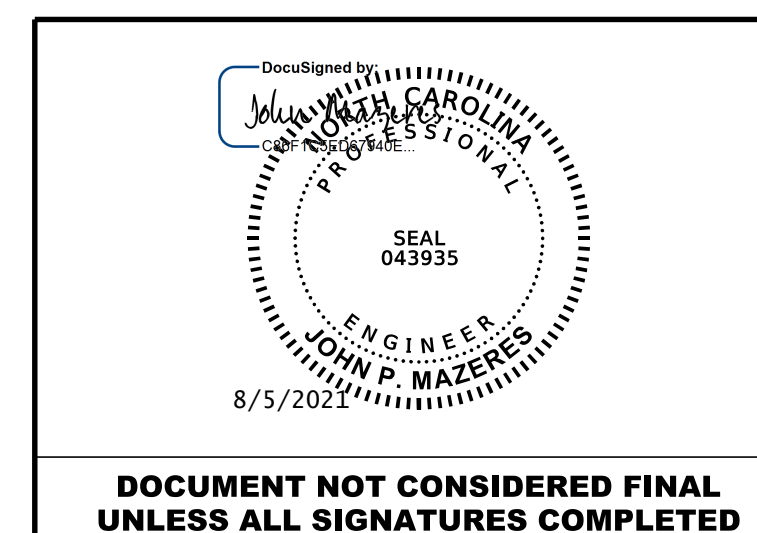
STEP 3: REPEAT STEPS 1 AND 2 UNTIL ALL WORK IS COMPLETE.

LOCATION: C-5 (BRIDGE # 328) SOUTHBOUND

STEP 1: USE TMP-55, TMP-6C, AND NCDOT RSD 1101.02 SHEET 8 OF 14 TO CLOSE LANES L1 AND L2 OF I-277 SB, AND I-77 SB HOT LANES. THIS OPERATION WILL CLOSE THE I-77 SB HOT LANES. PERFORM BRIDGE DECK PRESERVATION OPERATIONS AS REQUIRED IN BRIDGE PLANS ON I-277 AT LOCATION C-5 (BRIDGE #328). AT THE END OF EACH WORK PERIOD REOPEN THE ROADWAY AND BRIDGE TO TRAFFIC.

STEP 2: USE TMP-56, TMP-14 FOR OFFSITE DETOUR 40, TMP-6C AND NCDOT RSD 1101.02 SHEET 8 OF 14 TO CLOSE LANES L2 AND L3 OF I-277 SB, RAMP #40, AND I-77 SB HOT LANES. PLACE DETOUR SIGNING FOR CLOSURES ALONG I-277, 11TH ST, RAMP #40 AND RAMP #41. THIS OPERATION WILL CLOSE RAMP #40 AND I-77 SB HOT LANES. COVER SIGNS UNTIL OFFSITE DETOUR ARE READY FOR OPERATION. PERFORM BRIDGE DECK PRESERVATION OPERATIONS AS REQUIRED IN BRIDGE PLANS ON I-277 AT LOCATION C-5 (BRIDGE #328). AT THE END OF EACH WORK PERIOD REOPEN THE ROADWAY AND BRIDGE TO TRAFFIC.

STEP 3: REPEAT STEPS 1 AND 2 UNTIL ALL WORK IS COMPLETE.



## PHASING NOTES (2 OF 3)

DOCUMENT NOT CONSIDERED FINAL  
UNLESS ALL SIGNATURES COMPLETED