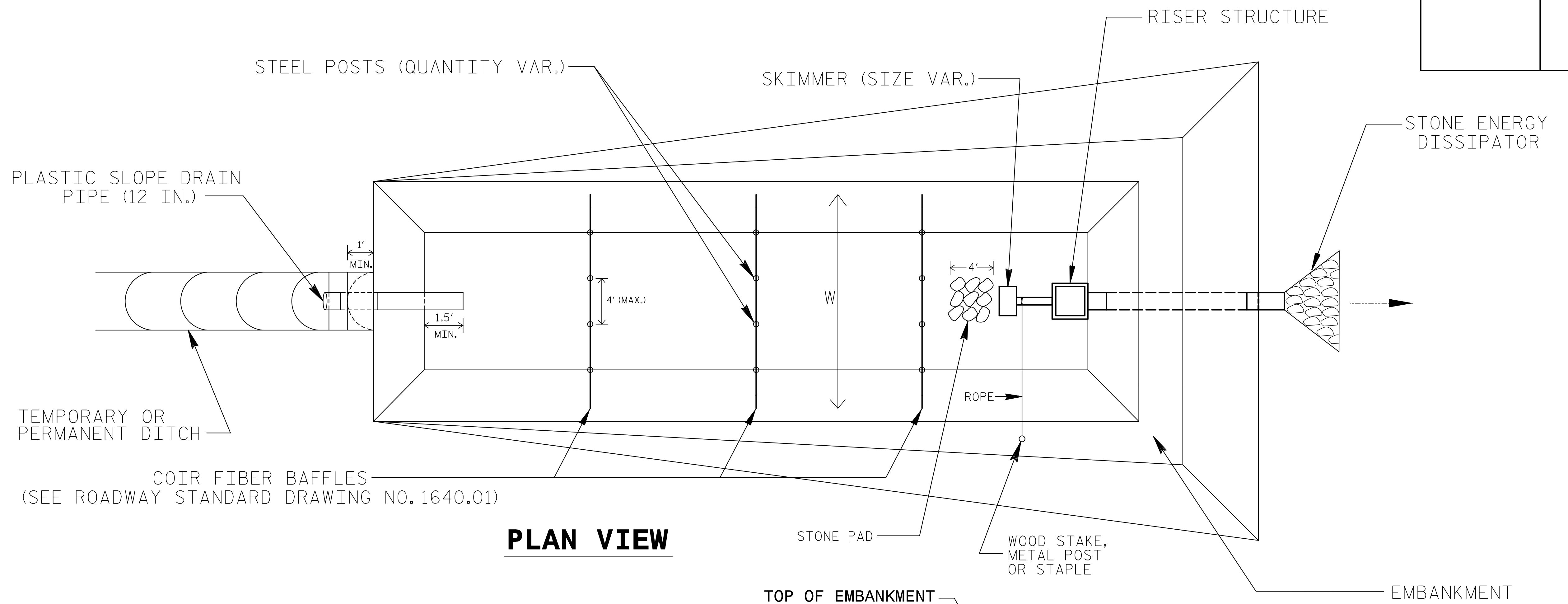
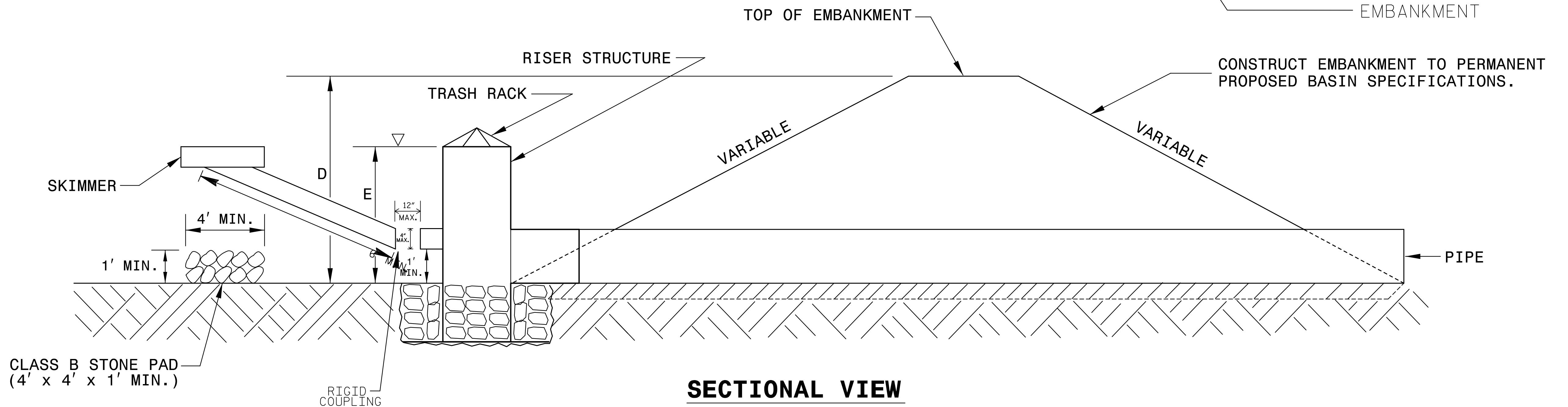


PROJECT REFERENCE NO. B-4626	SHEET NO. EC-2A
RW SHEET NO.	
ROADWAY DESIGN ENGINEER	HYDRAULICS ENGINEER

STORMWATER BASIN WITH SKIMMER



PLAN VIEW



SECTIONAL VIEW

NOTES

1. SEED AND PLACE MATTING FOR EROSION CONTROL ON INTERIOR AND EXTERIOR SIDESLOPES.
2. INSTALL A MINIMUM OF 3 COIR FIBER BAFFLES IN ACCORDANCE WITH ROADWAY STD. DRAWING 1640.01.
3. INSTALL SKIMMER AND COUPLING TO RISER STRUCTURE OR DIRECTLY INTO EMBANKMENT 1 FT. FROM BOTTOM OF BASIN.
4. THE ARM PIPE SHALL HAVE A MINIMUM LENGTH OF 6 FT. BETWEEN THE SKIMMER AND COUPLING.
5. PLASTIC SLOPE DRAIN PIPE AT INLET OF BASIN MAY BE REPLACED BY FILTRATION GEOTEXTILE AS DIRECTED.
6. THE DIFFERENCE BETWEEN LENGTHS "D" AND "E" REPRESENT THE FREEBOARD AND SHOULD BE 1 FT. MINIMUM.

NOT TO SCALE

PROJECT REFERENCE NO. B-4626	SHEET NO. EC-2B
RW SHEET NO.	
ROADWAY DESIGN ENGINEER	HYDRAULICS ENGINEER

COIR FIBER WATTLE WITH POLYACRYLAMIDE (PAM) DETAIL

NOTES:

USE MINIMUM 12 IN. DIAMETER COIR FIBER (COCONUT FIBER) WATTLE.

USE 2 FT. WOODEN STAKES WITH A 2 IN. BY 2 IN. NOMINAL CROSS SECTION.

ONLY INSTALL WATTLE(S) TO A HEIGHT IN DITCH SO FLOW WILL NOT WASH AROUND WATTLE AND SCOUR DITCH SLOPES AND AS DIRECTED.

INSTALL A MINIMUM OF 2 UPSLOPE STAKES AND 4 DOWNSLOPE STAKES AT AN ANGLE TO WEDGE WATTLE TO BOTTOM OF DITCH.

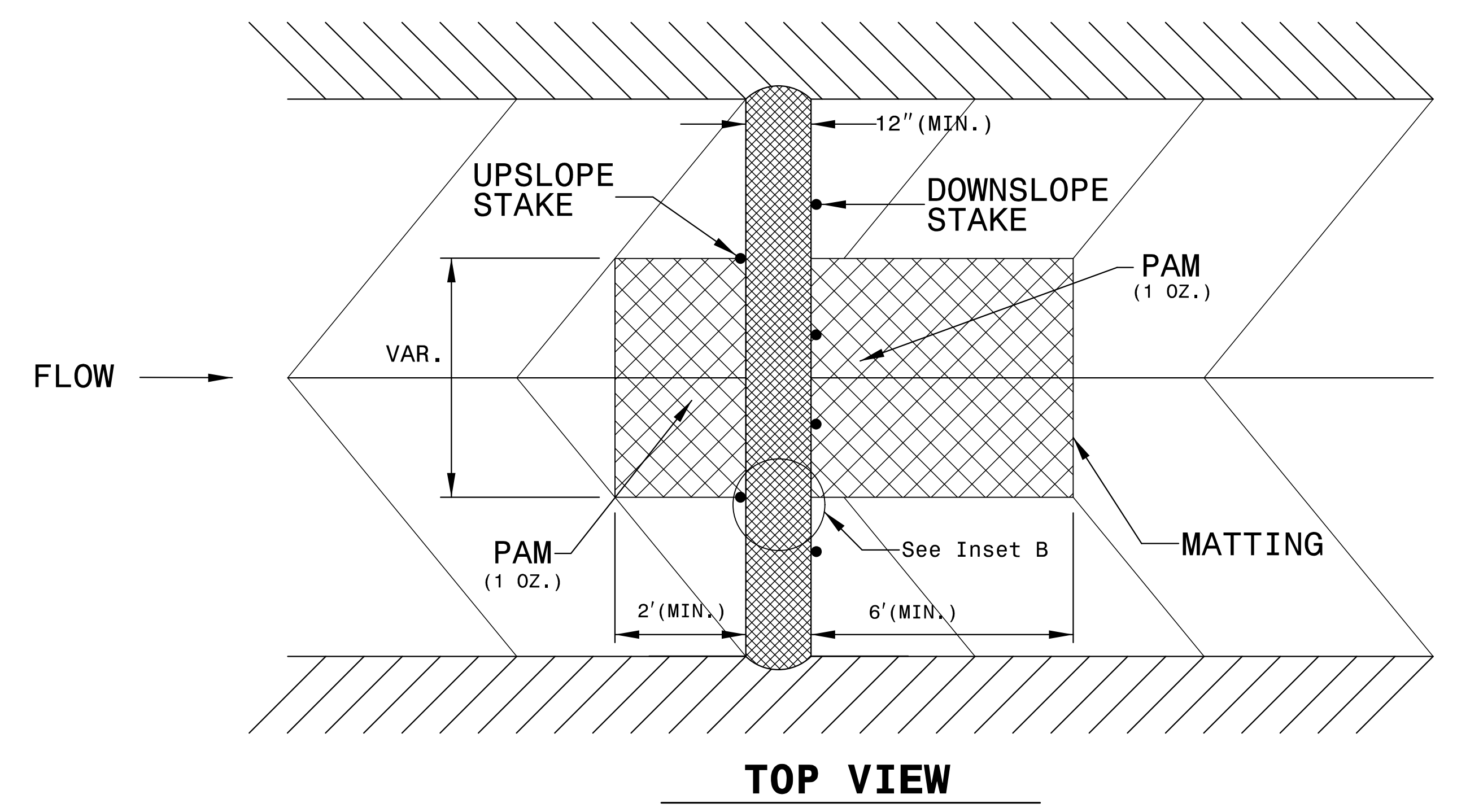
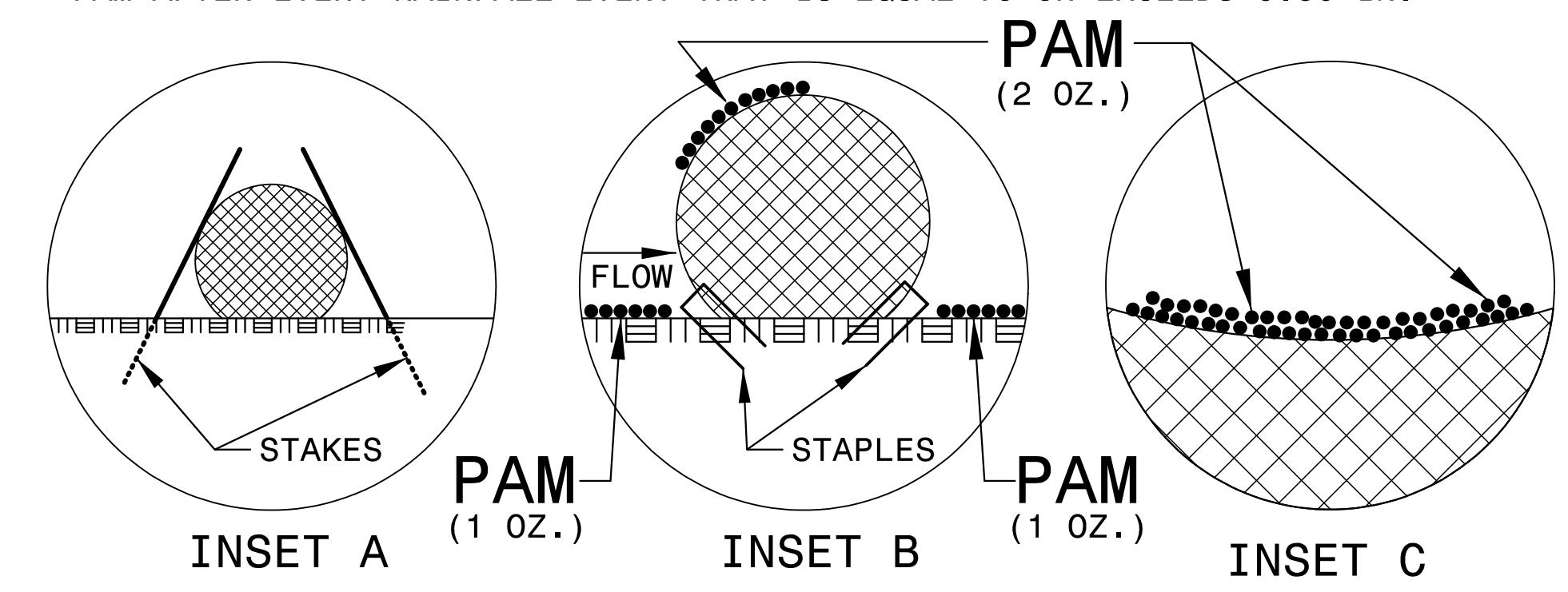
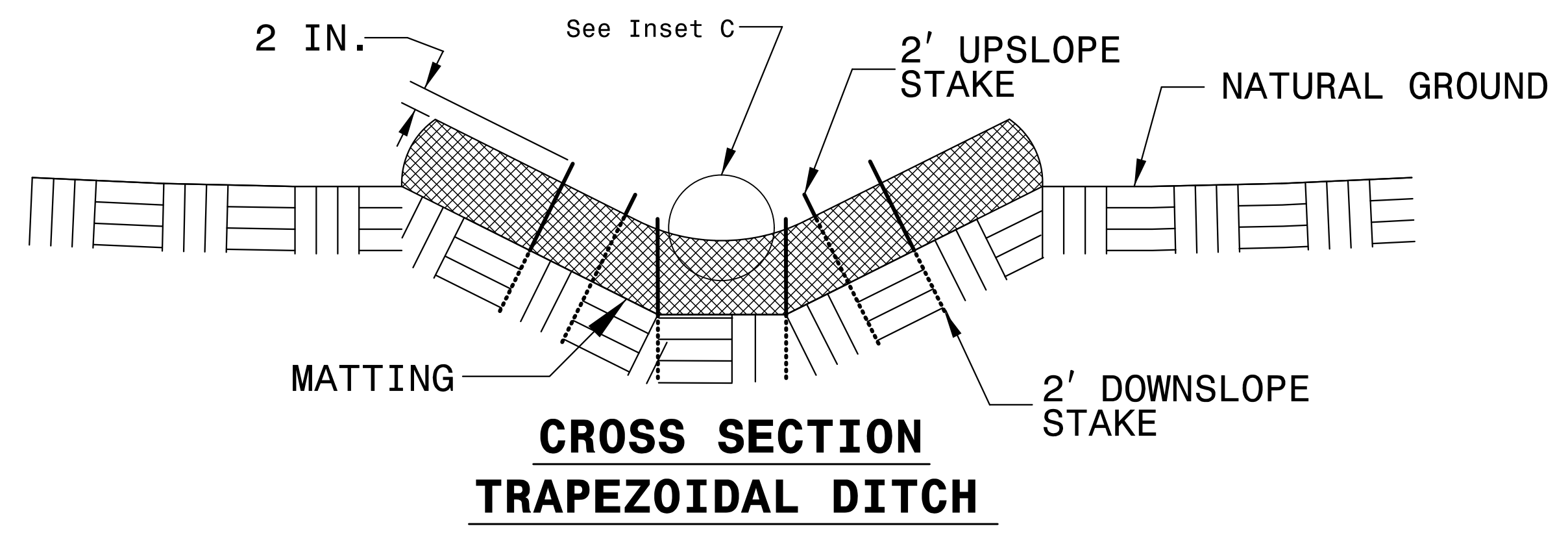
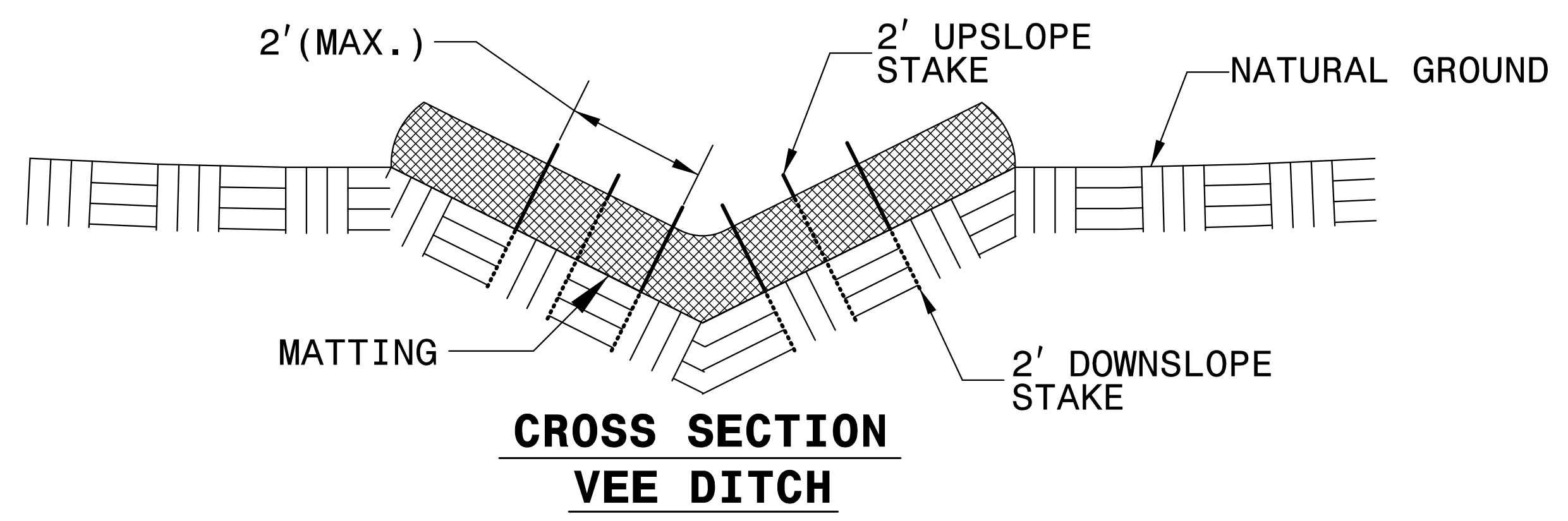
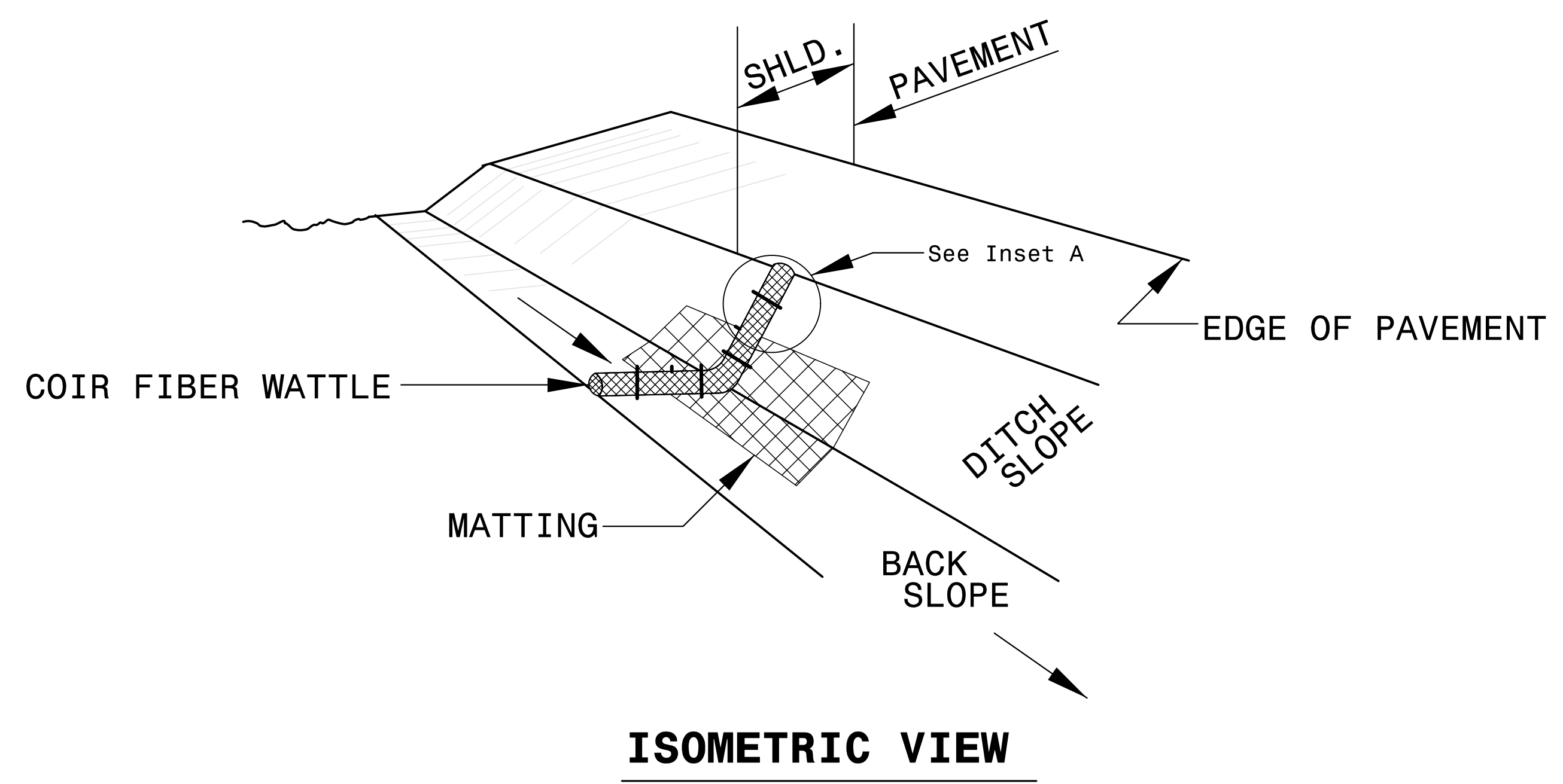
PROVIDE STAPLES MADE OF 0.125 IN. DIAMETER STEEL WIRE FORMED INTO A U SHAPE NOT LESS THAN 12" IN LENGTH.

INSTALL STAPLES APPROXIMATELY EVERY 1 LINEAR FOOT ON BOTH SIDES OF WATTLE AND AT EACH END TO SECURE IT TO THE SOIL.

INSTALL MATTING IN ACCORDANCE WITH SECTION 1631 OF THE STANDARD SPECIFICATIONS.

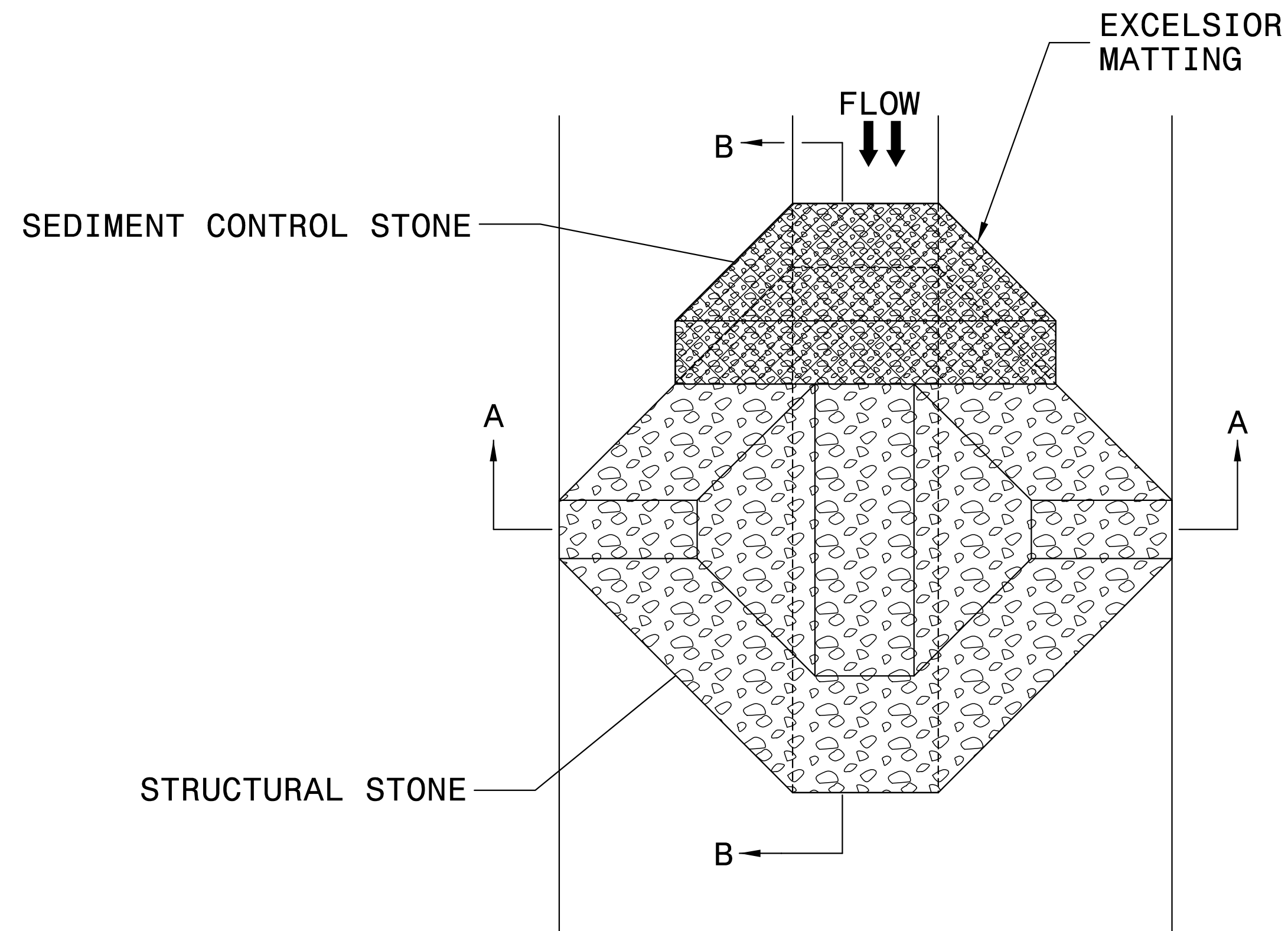
PRIOR TO POLYACRYLAMIDE (PAM) APPLICATION, OBTAIN A SOIL SAMPLE FROM PROJECT LOCATION, AND FROM OFFSITE MATERIAL, AND ANALYZE FOR APPROPRIATE PAM FLOCCULANT TO BE APPLIED TO EACH WATTLE.

INITIALLY APPLY 2 OUNCES OF ANIONIC OR NEUTRALLY CHARGED PAM OVER WATTLE WHERE WATER WILL FLOW AND 1 OUNCE OF PAM ON EACH SIDE OF WATTLE. REAPPLY PAM AFTER EVERY RAINFALL EVENT THAT IS EQUAL TO OR EXCEEDS 0.50 IN.

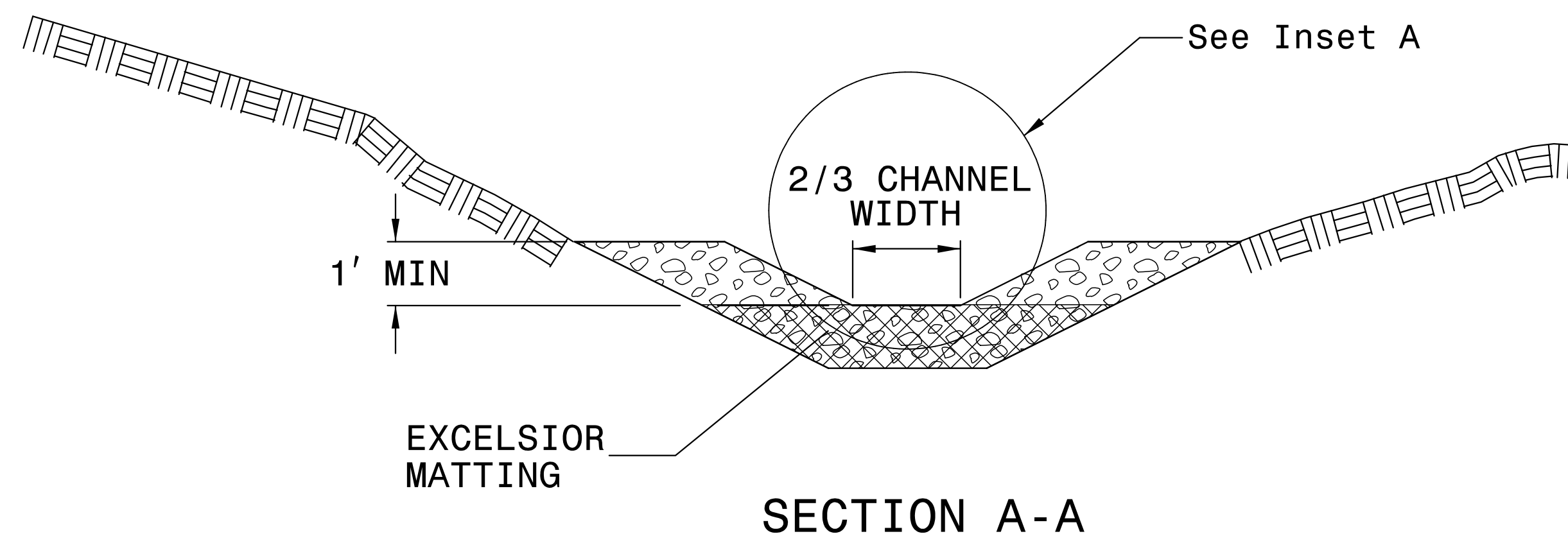


PROJECT REFERENCE NO. B-4626	SHEET NO. EC-2C
RW SHEET NO.	
ROADWAY DESIGN ENGINEER	HYDRAULICS ENGINEER

TEMPORARY ROCK SILT CHECK TYPE 'A' WITH EXCELSIOR MATTING AND POLYACRYLAMIDE (PAM)



PLAN



SECTION A-A

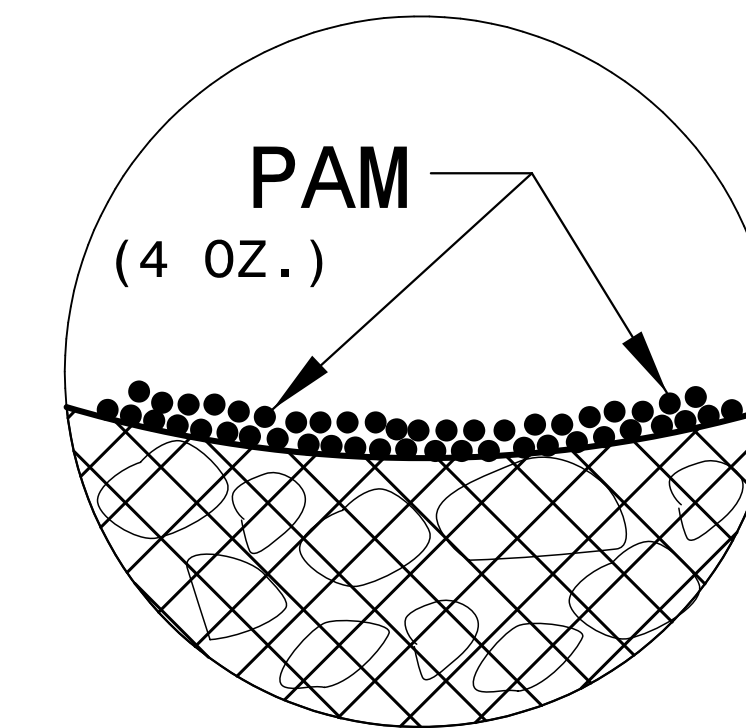
NOTES:

INSTALL TEMPORARY ROCK SILT CHECK TYPE A IN ACCORDANCE WITH ROADWAY STANDARD DRAWING NO. 1633.01.

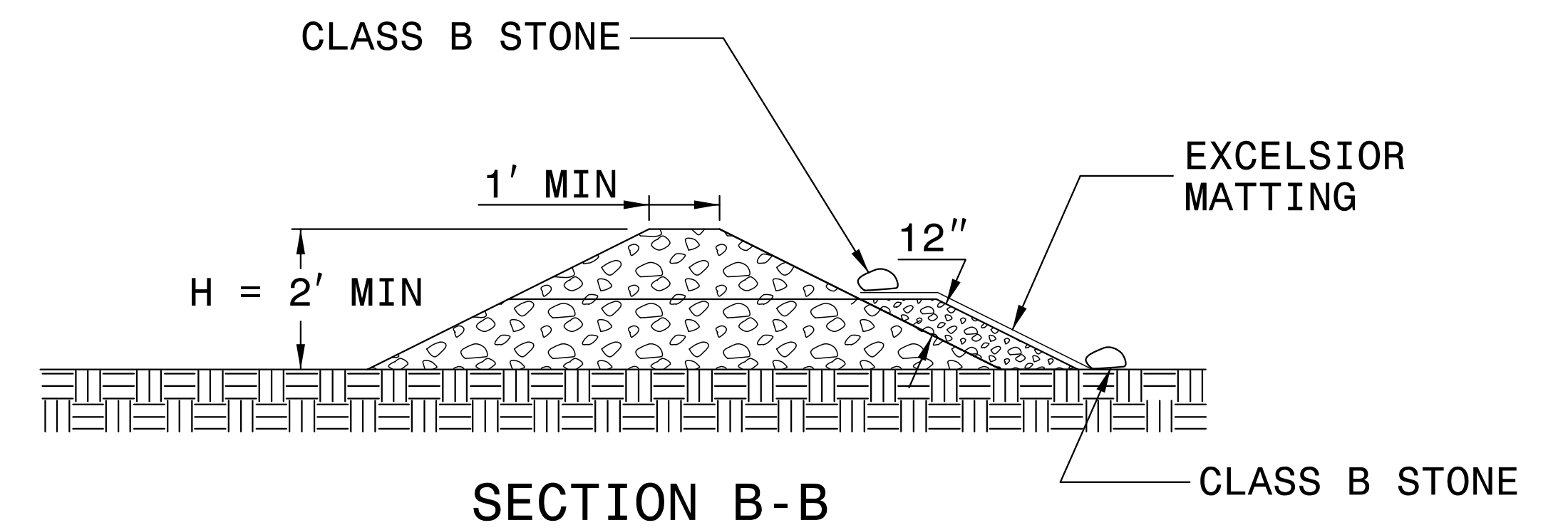
USE EXCELSIOR FOR MATTING MATERIAL AND ANCHOR MATTING SECTION AT TOP AND BOTTOM WITH CLASS B STONE.

PRIOR TO POLYACRYLAMIDE (PAM) APPLICATION, OBTAIN A SOIL SAMPLE FROM PROJECT LOCATION, AND FROM OFFSITE MATERIAL, AND ANALYZE FOR APPROPRIATE PAM FLOCCULANT TO BE APPLIED TO EACH ROCK SILT CHECK.

INITIALLY APPLY 4 OUNCES OF POLYACRYLAMIDE (PAM) TO TOP OF MATTING SECTION AND AFTER EVERY RAINFALL EVENT THAT EQUALS OR EXCEEDS 0.50 INCHES.



INSET A



SECTION B-B

NOT TO SCALE

DIVISION OF HIGHWAYS
STATE OF NORTH CAROLINA

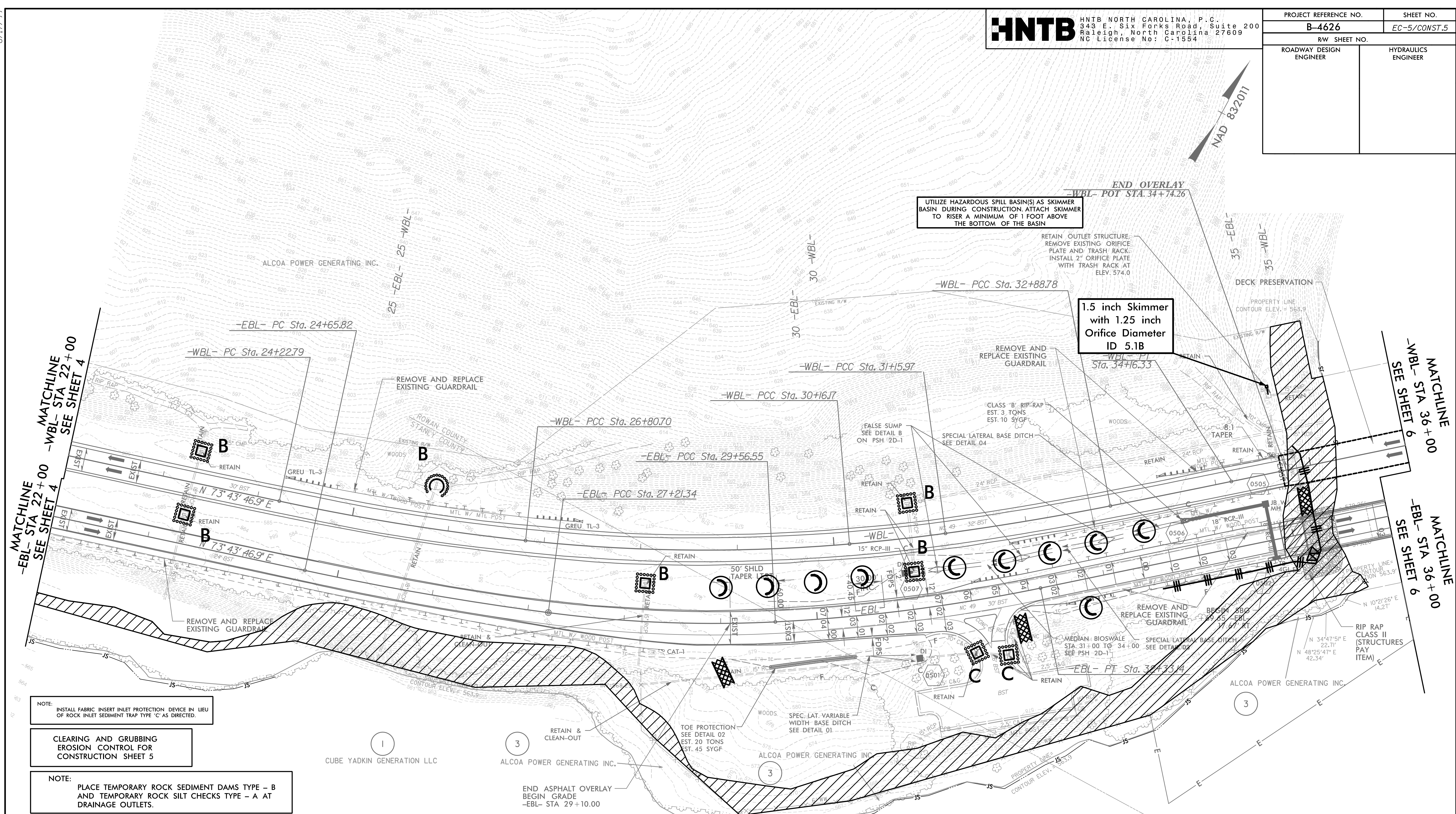
PROJECT REFERENCE NO. <i>B-4626</i>	SHEET NO. <i>EC-3A</i>
ROADWAY DESIGN ENGINEER	HYDRAULICS ENGINEER

SOIL STABILIZATION TIMEFRAMES

<i>SITE DESCRIPTION</i>	<i>STABILIZATION TIME</i>	<i>TIMEFRAME EXCEPTIONS</i>
PERIMETER DIKES, SWALES, DITCHES AND SLOPES	7 DAYS	NONE
HIGH QUALITY WATER (HQW) ZONES	7 DAYS	NONE
SLOPES STEEPER THAN 3:1	7 DAYS	IF SLOPES ARE 10' OR LESS IN LENGTH AND ARE NOT STEEPER THAN 2:1, 14 DAYS ARE ALLOWED.
SLOPES 3:1 OR FLATTER	14 DAYS	7 DAYS FOR SLOPES GREATER THAN 50' IN LENGTH.
ALL OTHER AREAS WITH SLOPES FLATTER THAN 4:1	14 DAYS	NONE, EXCEPT FOR PERIMETERS AND HQW ZONES.

8/17/99

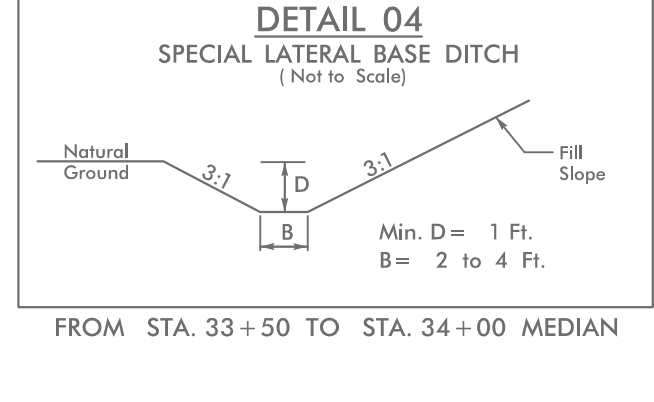
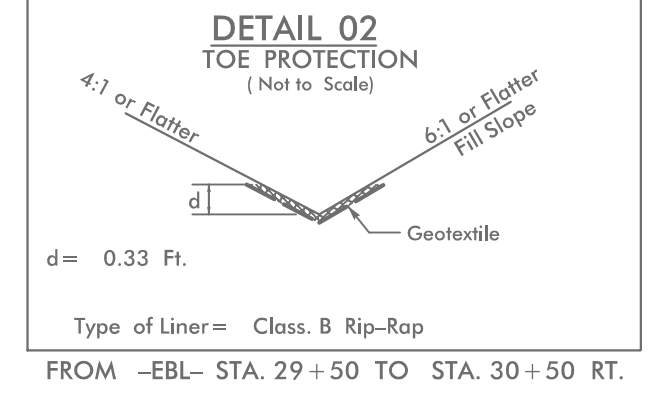
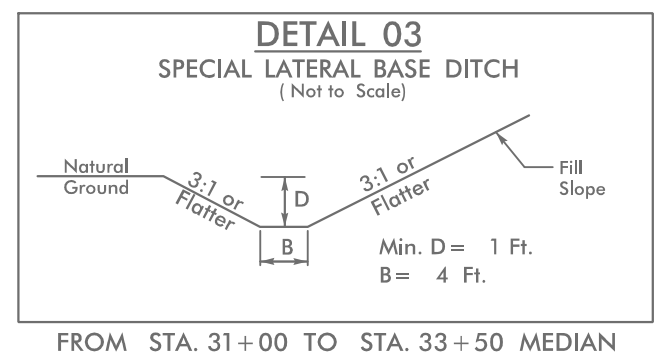
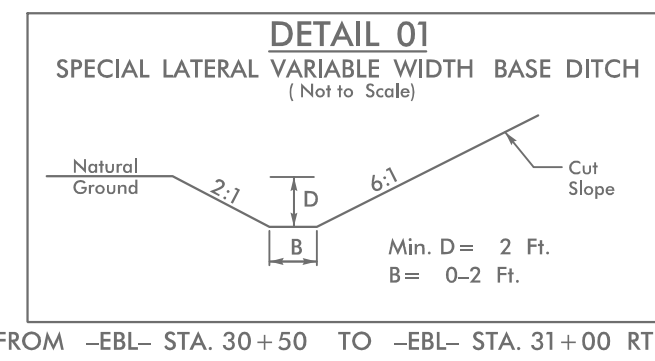
PROJECT REFERENCE NO.	SHEET NO.
B-4626	EC-5/CONST.5
RW SHEET NO.	
ROADWAY DESIGN ENGINEER	HYDRAULICS ENGINEER



NOTE: INSTALL FABRIC INSERT INLET PROTECTION DEVICE IN LIEU OF ROCK INLET SEDIMENT TRAP TYPE 'C' AS DIRECTED.

CLEARING AND GRUBBING EROSION CONTROL FOR CONSTRUCTION SHEET 5

NOTE: PLACE TEMPORARY ROCK SEDIMENT DAMS TYPE - B AND TEMPORARY ROCK SILT CHECKS TYPE - A AT DRAINAGE OUTLETS.



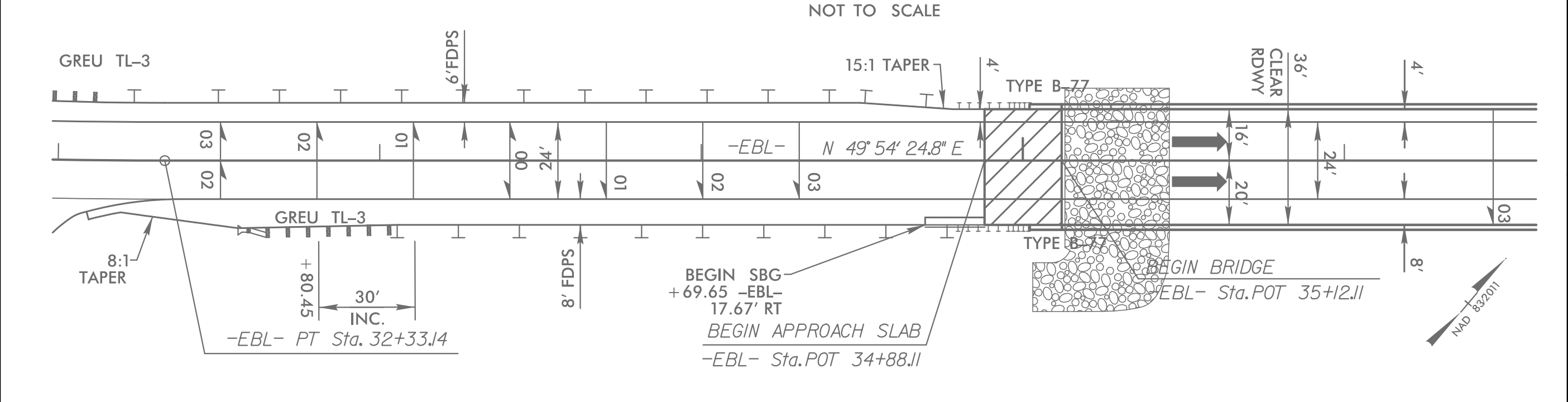
FOR -EBL- PROFILE, SEE SHEET 9
 FOR -WBL- PROFILE, SEE SHEET 12

FOR STRUCTURE PLANS, SEE SHEET S-1 THRU S-

UTILIZE HAZARDOUS SPILL BASIN(S) AS SKIMMER BASIN DURING CONSTRUCTION. ATTACH SKIMMER TO RISE A MINIMUM OF 1 FOOT ABOVE THE BOTTOM OF THE BASIN

1.5 inch Skimmer with 1.25 inch Orifice Diameter ID 5.1B

SKETCH OF BRIDGE IN RELATIONSHIP TO PAVEMENT



8/17/2021
resign\B-4626.EC.PSH.dgn
HNTB

PROJECT REFERENCE NO.	SHEET NO.
B-4626	EC-8/CONST.8
RW SHEET NO.	
ROADWAY DESIGN ENGINEER	HYDRAULICS ENGINEER

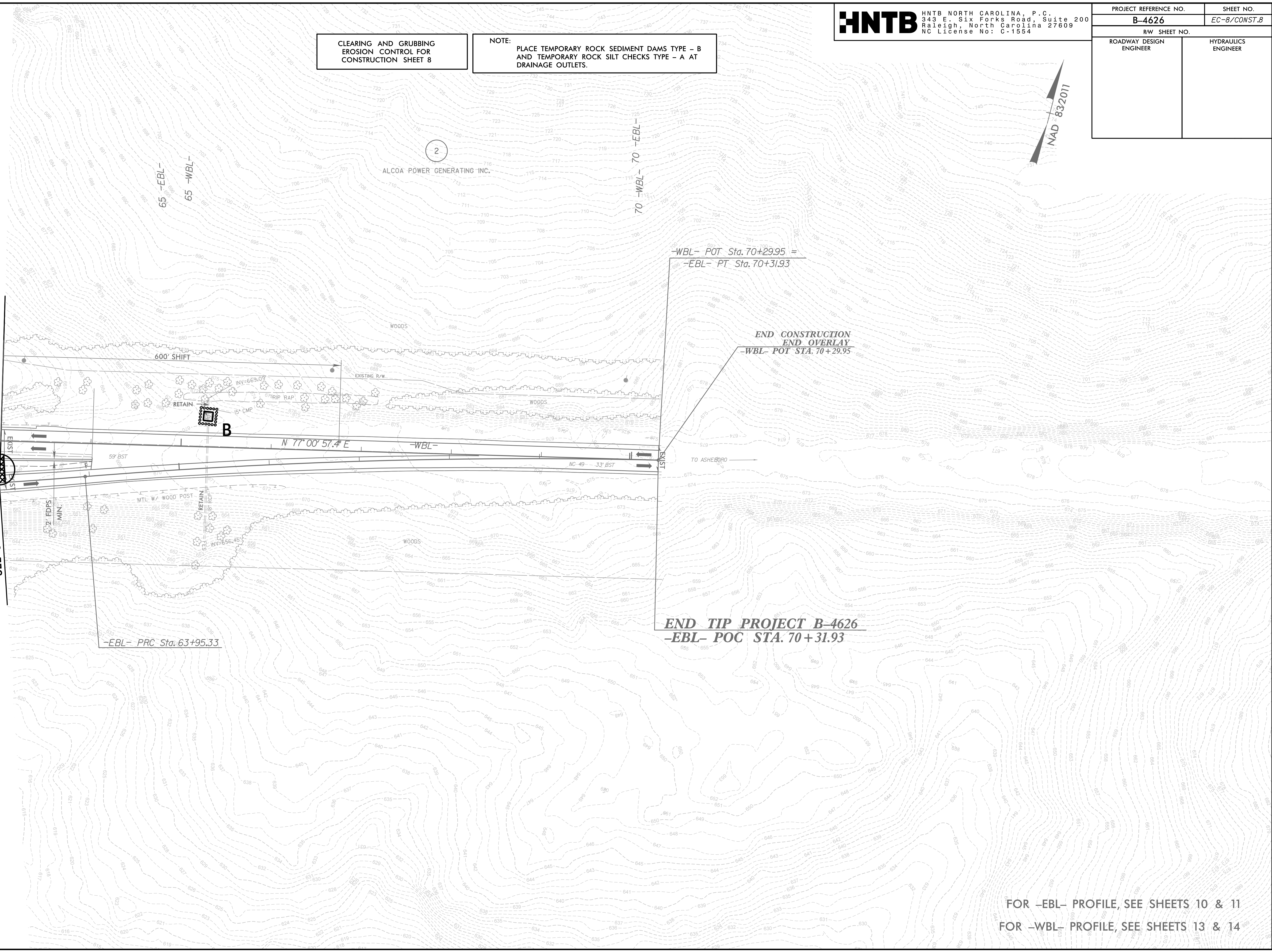
CLEARING AND GRUBBING
EROSION CONTROL FOR
CONSTRUCTION SHEET 8

NOTE:
PLACE TEMPORARY ROCK SEDIMENT DAMS TYPE - B
AND TEMPORARY ROCK SILT CHECKS TYPE - A AT
DRAINAGE OUTLETS.



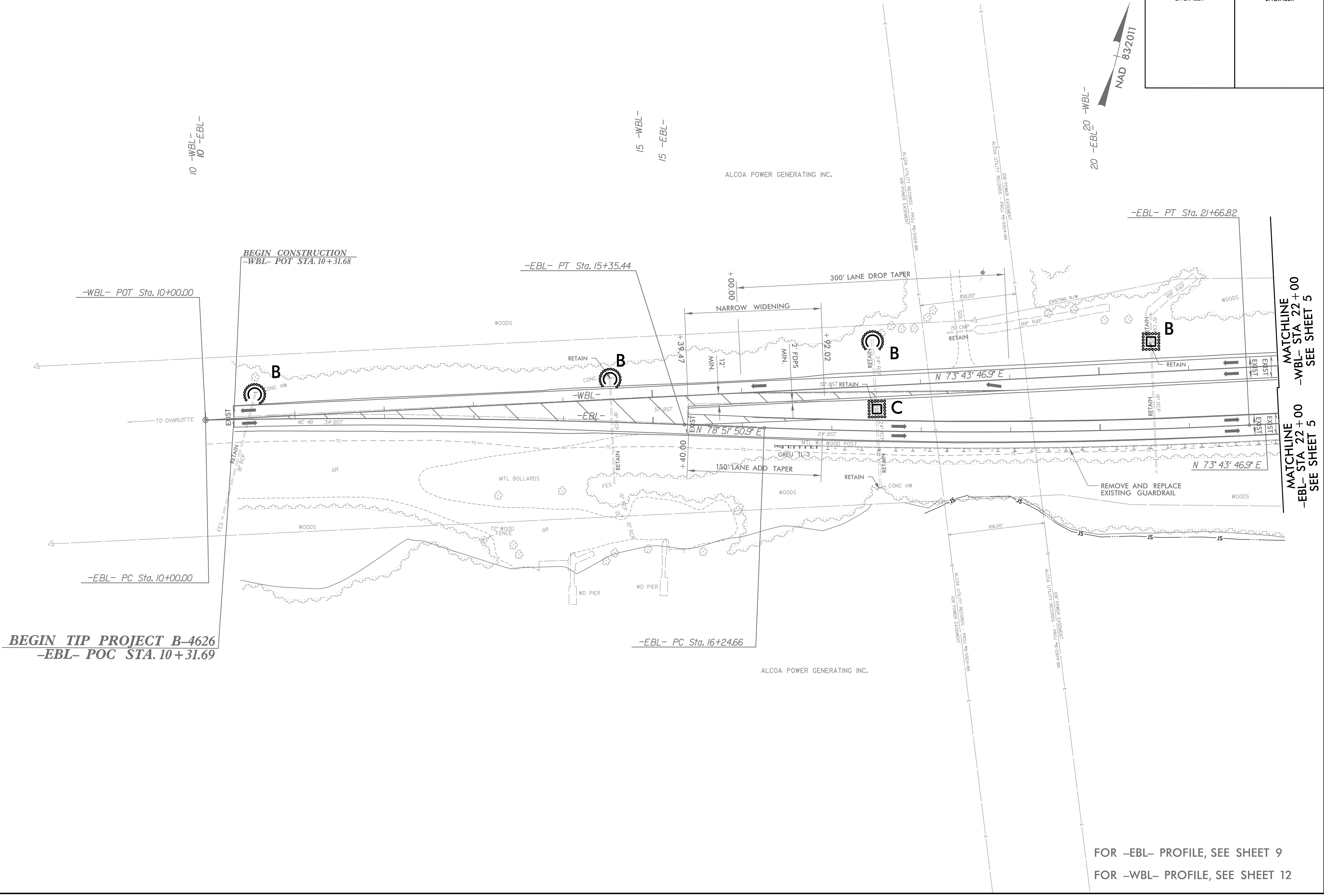
MATCHLINE
-WBL- STA 63+00
SEE SHEET 7

MATCHLINE
-EBL- STA 63+00
SEE SHEET 7



FOR -EBL- PROFILE, SEE SHEETS 10 & 11
FOR -WBL- PROFILE, SEE SHEETS 13 & 14

PROJECT REFERENCE NO.	SHEET NO.
B-4626	EC-9/CONST.4
RW SHEET NO.	
ROADWAY DESIGN ENGINEER	HYDRAULICS ENGINEER

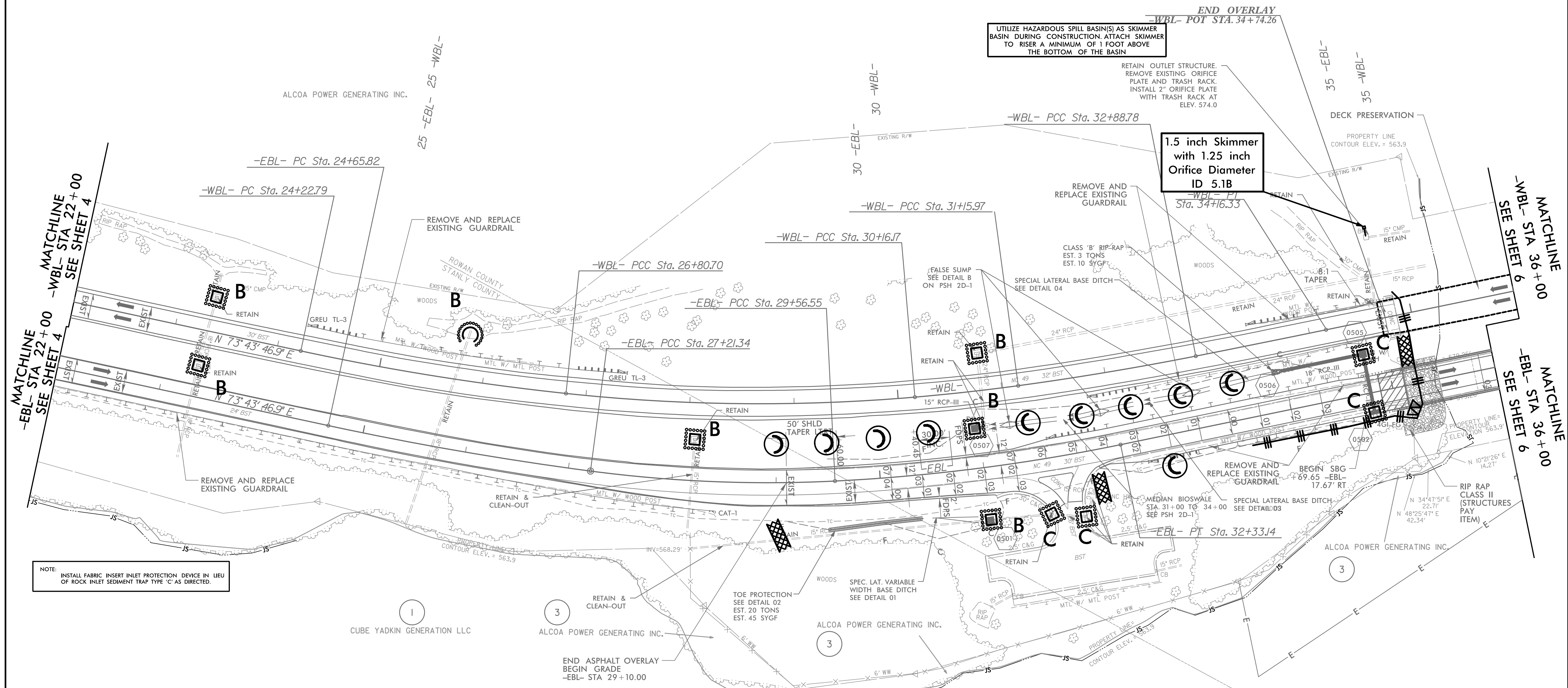
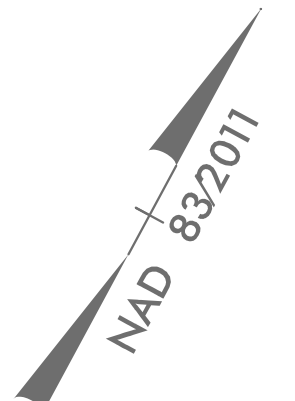


BEGIN TIP PROJECT B-4626
-EBL- POC STA. 10+31.69

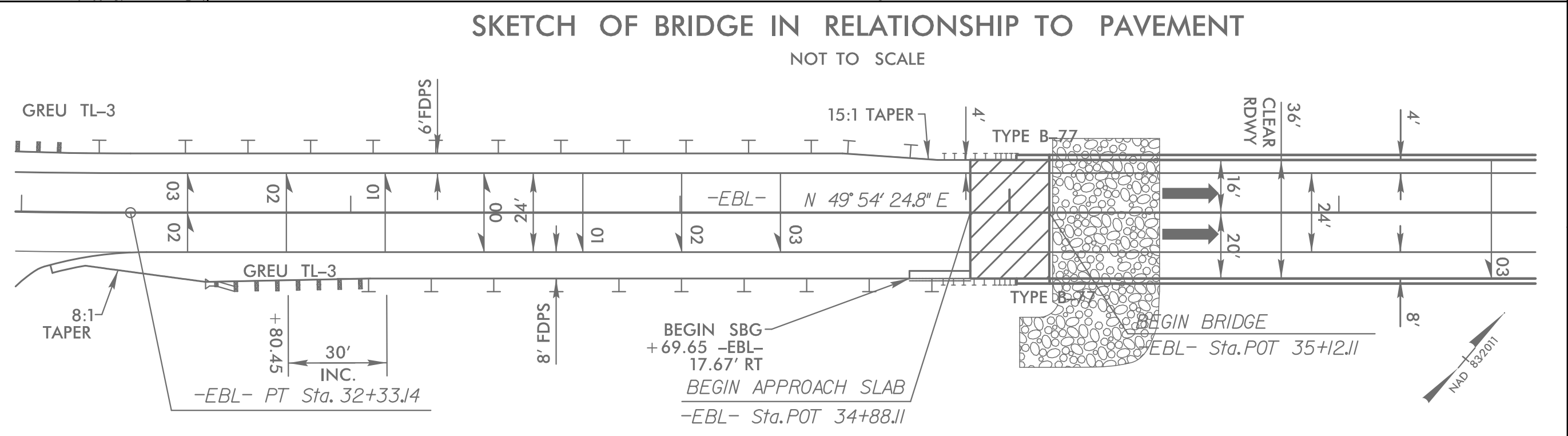
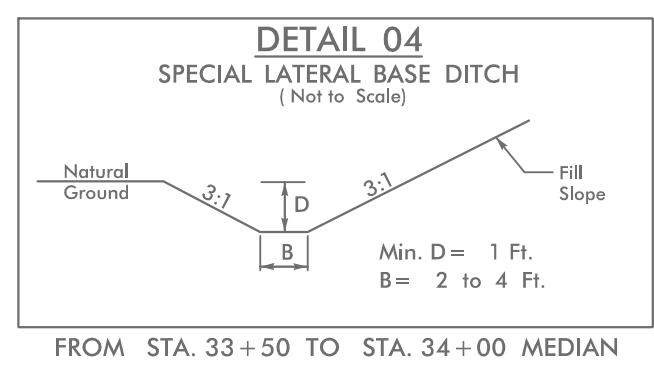
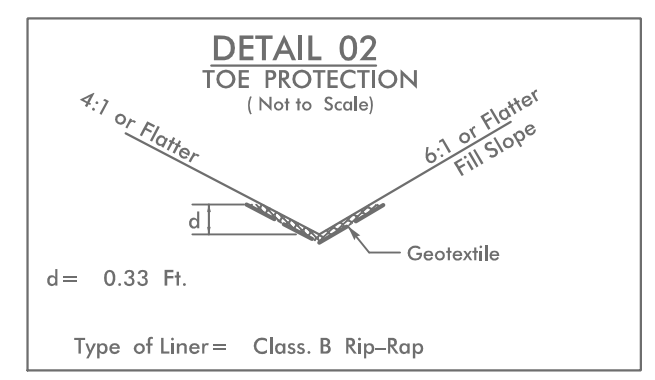
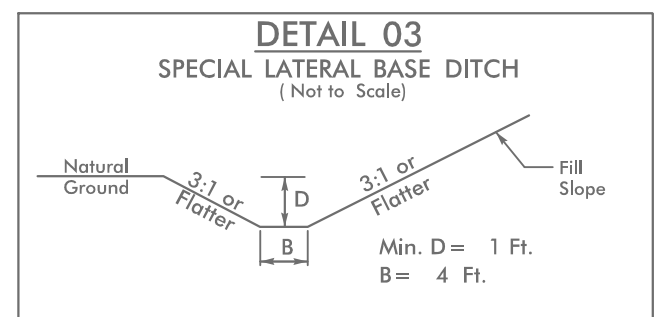
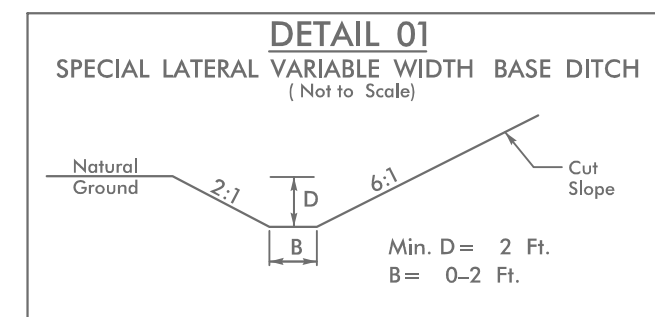
FOR -EBL- PROFILE, SEE SHEET 9
FOR -WBL- PROFILE, SEE SHEET 12

8/17/99

PROJECT REFERENCE NO.	SHEET NO.
B-4626	EC-10/CONST.5
RW SHEET NO.	
ROADWAY DESIGN ENGINEER	HYDRAULICS ENGINEER



NOTE: INSTALL FABRIC INSERT INLET PROTECTION DEVICE IN LIEU OF ROCK INLET SEDIMENT TRAP TYPE 'C' AS DIRECTED.

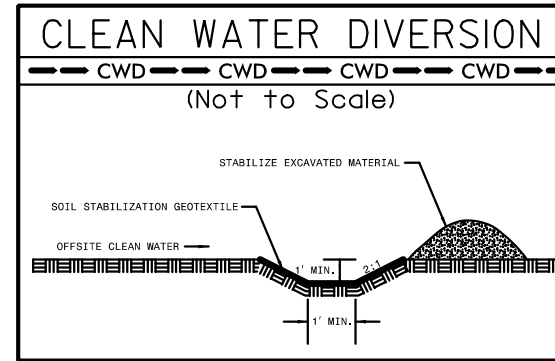


FOR -EBL- PROFILE, SEE SHEET 9
 FOR -WBL- PROFILE, SEE SHEET 12

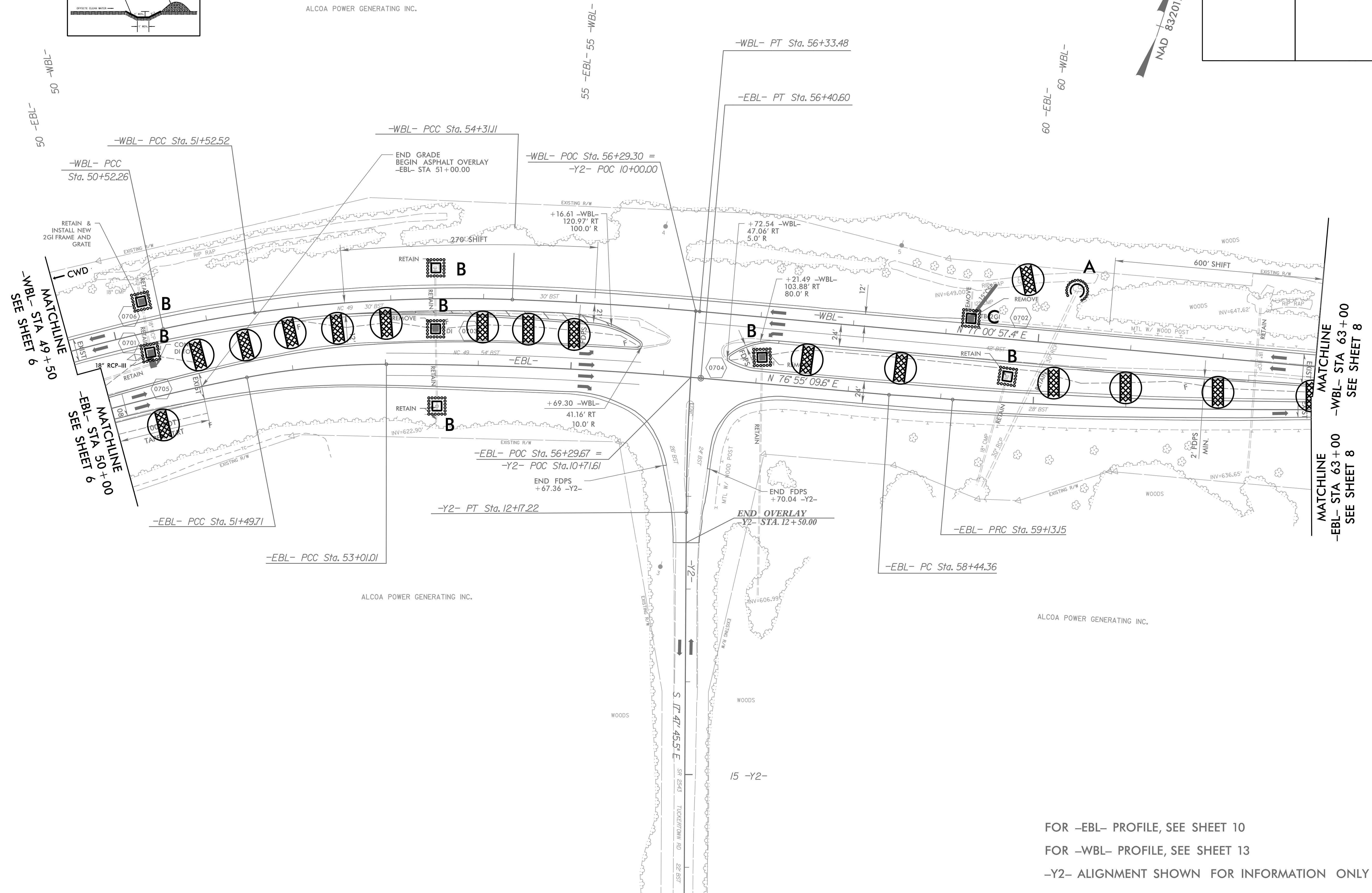
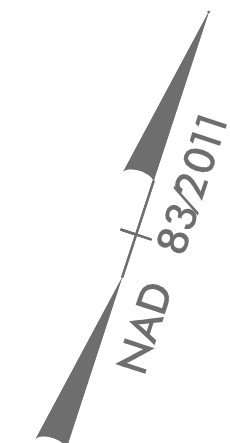
FOR STRUCTURE PLANS, SEE SHEET S-1 THRU S-

8/17/2021
 res101.dgn - 4626.EC_PSH.dgn
 HNTB

PROJECT REFERENCE NO. B-4626	SHEET NO. EC-12/CONST.7
RW SHEET NO.	
ROADWAY DESIGN ENGINEER	HYDRAULICS ENGINEER



2
 ALCOA POWER GENERATING INC.



FOR -EBL- PROFILE, SEE SHEET 10
 FOR -WBL- PROFILE, SEE SHEET 13
 -Y2- ALIGNMENT SHOWN FOR INFORMATION ONLY

