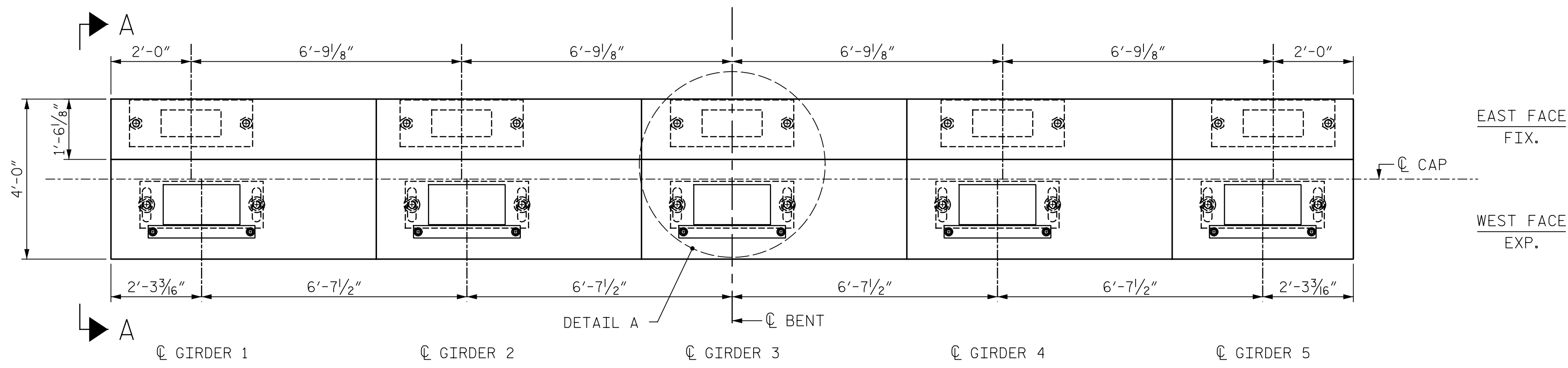
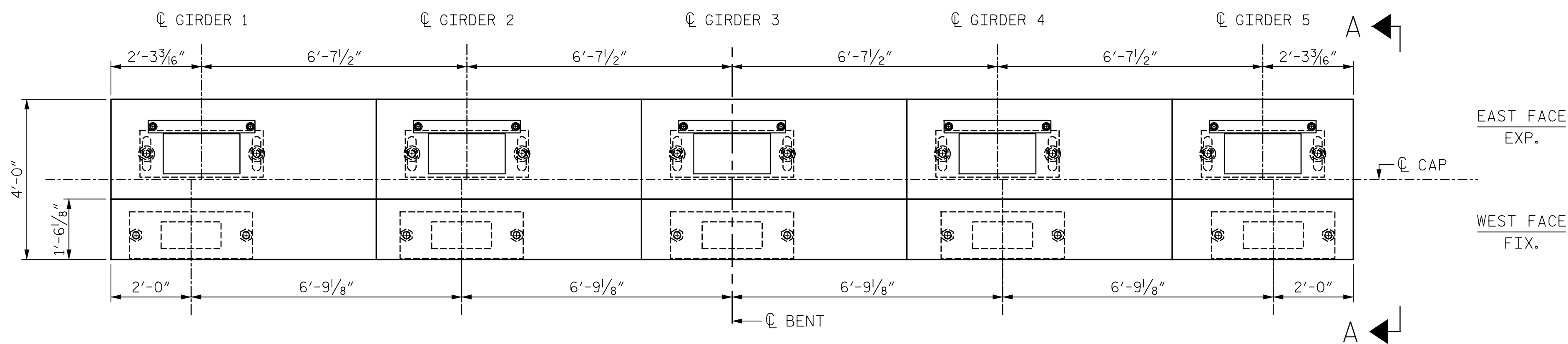


p:\gfn\p-w\ben\p-w-01\Documents\Projects\63639\Task 010 B-4626\Discipline\Struct\DN\Rowan 8\Rowan 8 TOTAL PRJ 9/2/2021 3:38:12 PM pdf\_mono\_gfchit\_FS.plt Rowan.pcn.tbi

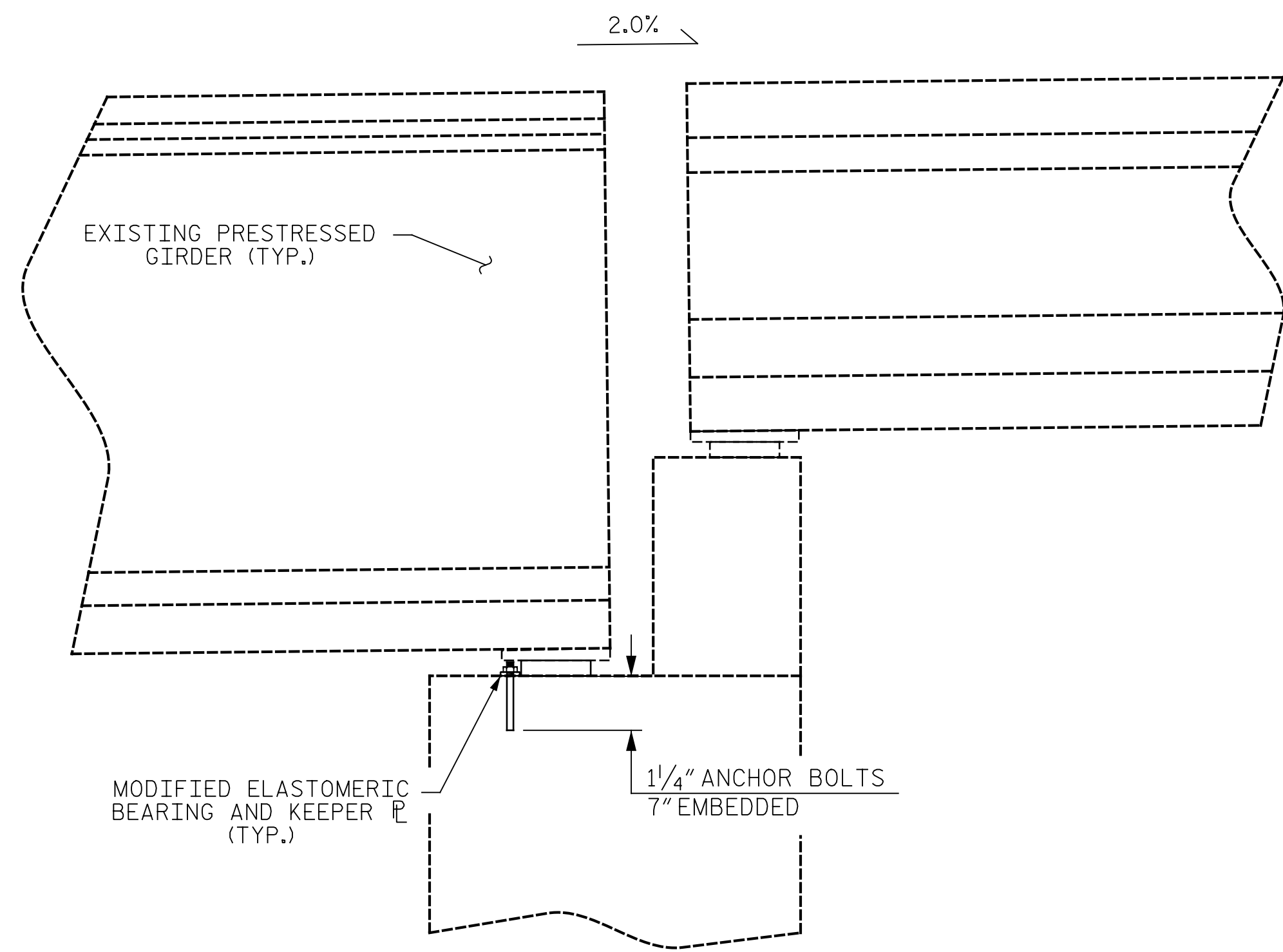


PLAN OF CAP FOR BENT 8

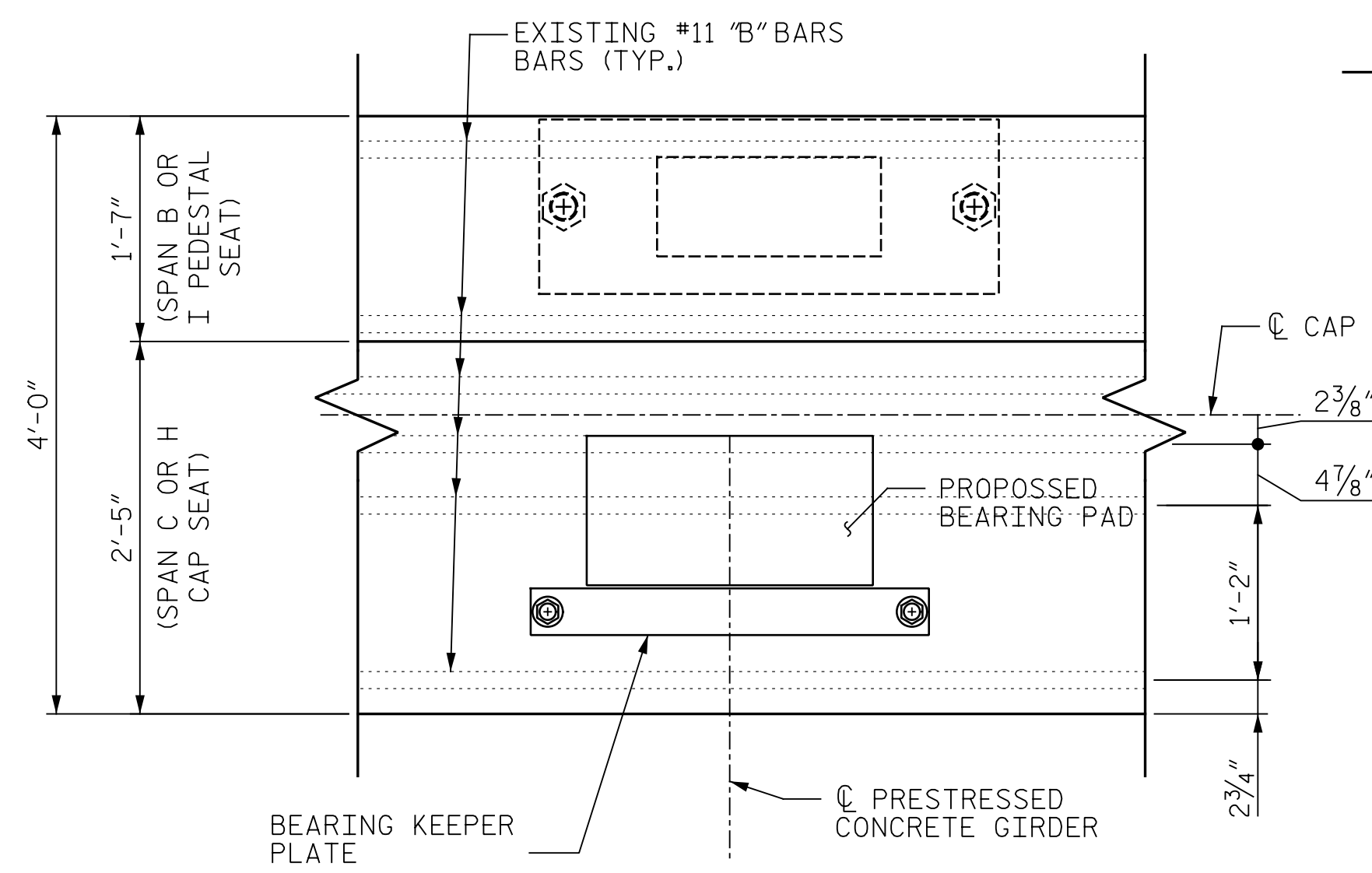


PLAN OF CAP FOR BENT 2

PROPOSED BEARING LAYOUT

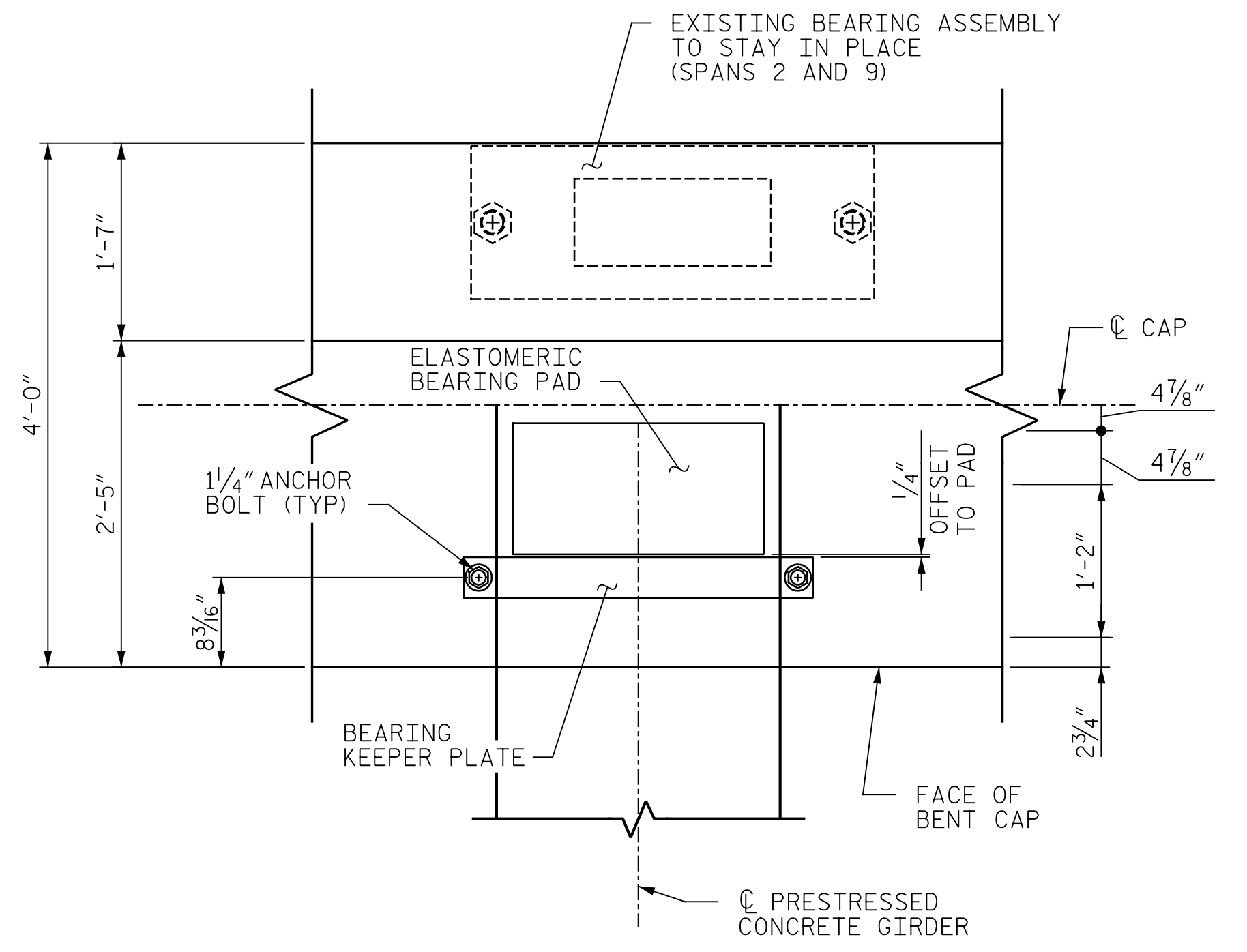


SECTION A-A



DETAIL A

(SOLE PLATE AND ANCHOR BOLTS NOT SHOWN FOR CLARITY)



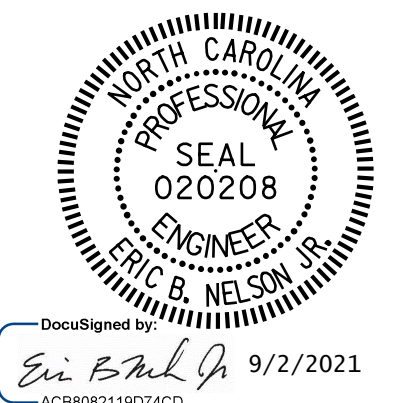
DETAIL OF KEEPER PLATE ORIENTATION FOR BEAMS

**NOTES**  
 PROPOSED KEEPER ANCHOR BOLTS ARE DETAILED TO CLEAR MAIN CAP BARS.  
 EXISTING "S" BARS MAY BE CUT AS REQUIRED TO INSTALL ANCHOR BOLTS.  
 FOR KEEPER PLATE DETAILS, SEE BEARING REPAIR DETAILS SHEET S2-20

PROJECT NO. B-4626  
STANLY, ROWAN  
AND DAVIDSON COUNTY  
 BRIDGE NO. 790008

STATE OF NORTH CAROLINA  
 DEPARTMENT OF TRANSPORTATION  
 RALEIGH

BEARING AND KEEPER LAYOUT DETAILS



DRAWN BY: M. LEE DATE: 3/2021  
 CHECKED BY: R. NELSON DATE: 4/2021

PLANS PREPARED BY:  
**Gannett Fleming**  
 Excellence Delivered As Promised

One Glenwood Avenue  
 Suite 900  
 Raleigh, NC 27603  
 (919) 420-7660  
 NC Lic. No. F-0270

DOCUMENT NOT CONSIDERED FINAL UNLESS ALL SIGNATURES COMPLETED

REVISIONS						SHEET NO.
NO.	BY:	DATE:	NO.	BY:	DATE:	S2-19
1			3			TOTAL SHEETS
2			4			125