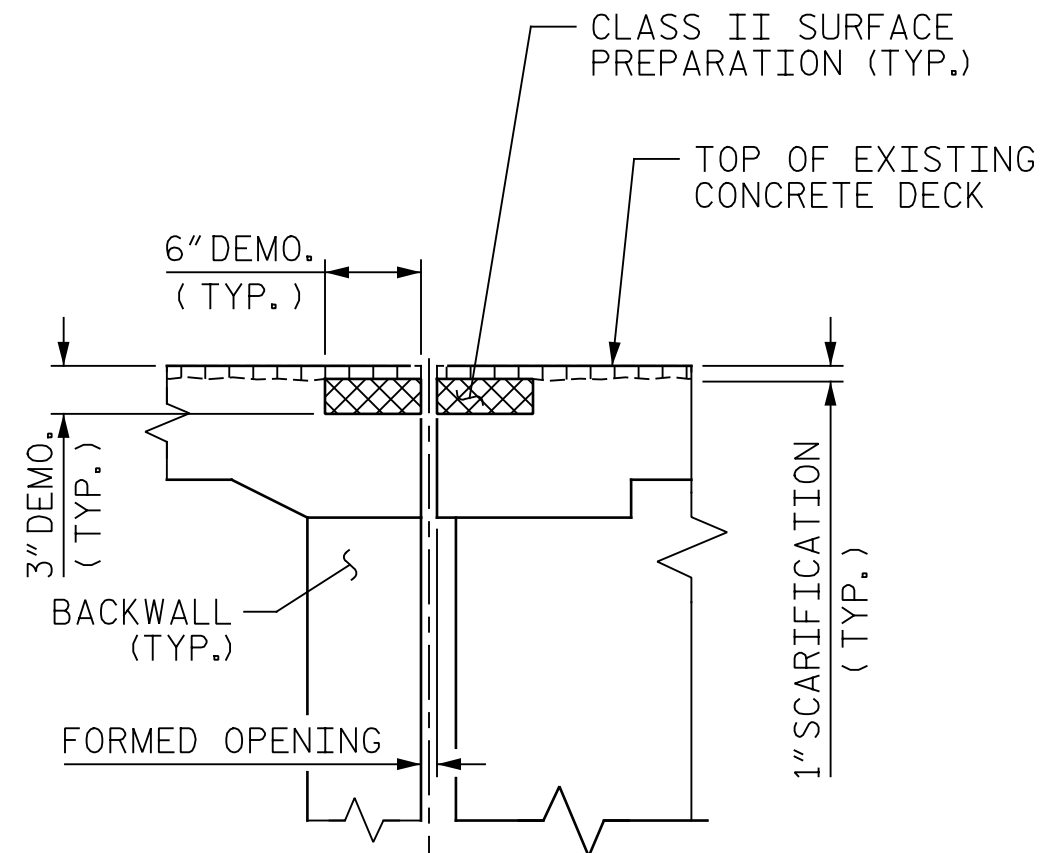
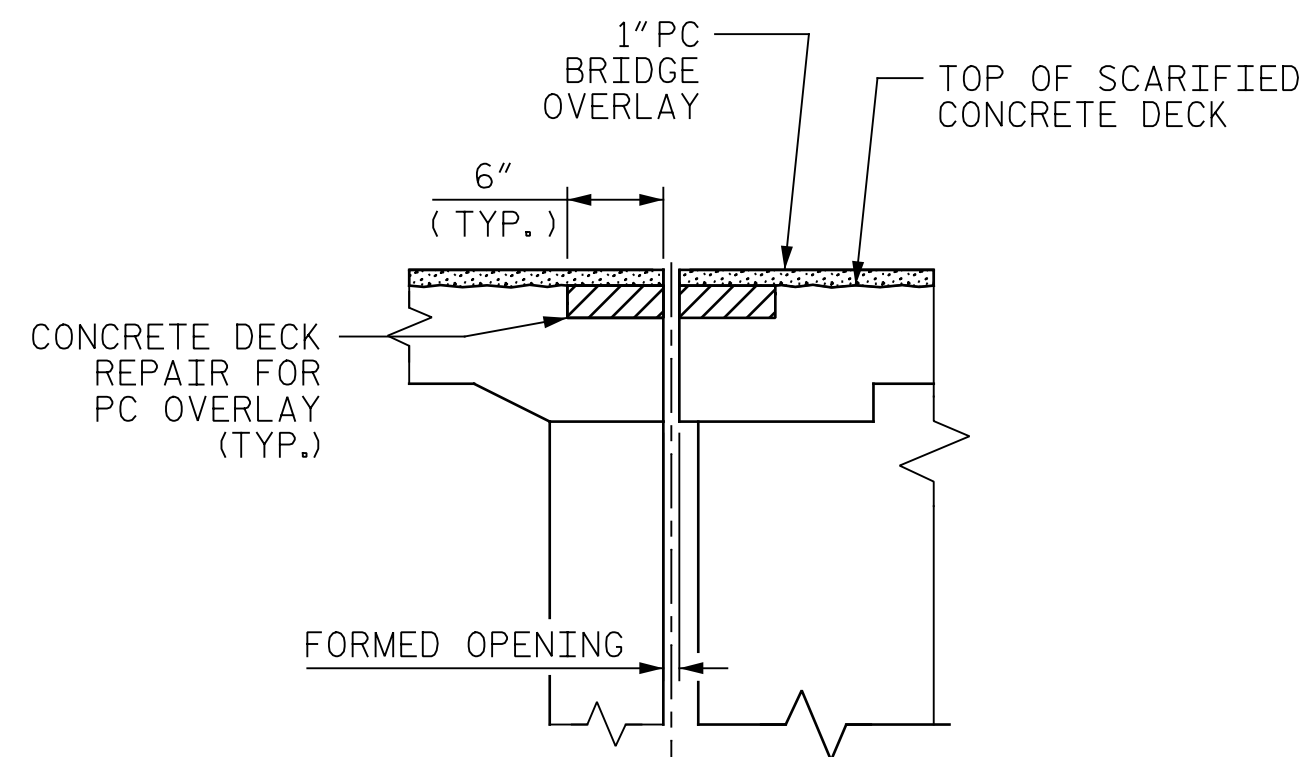


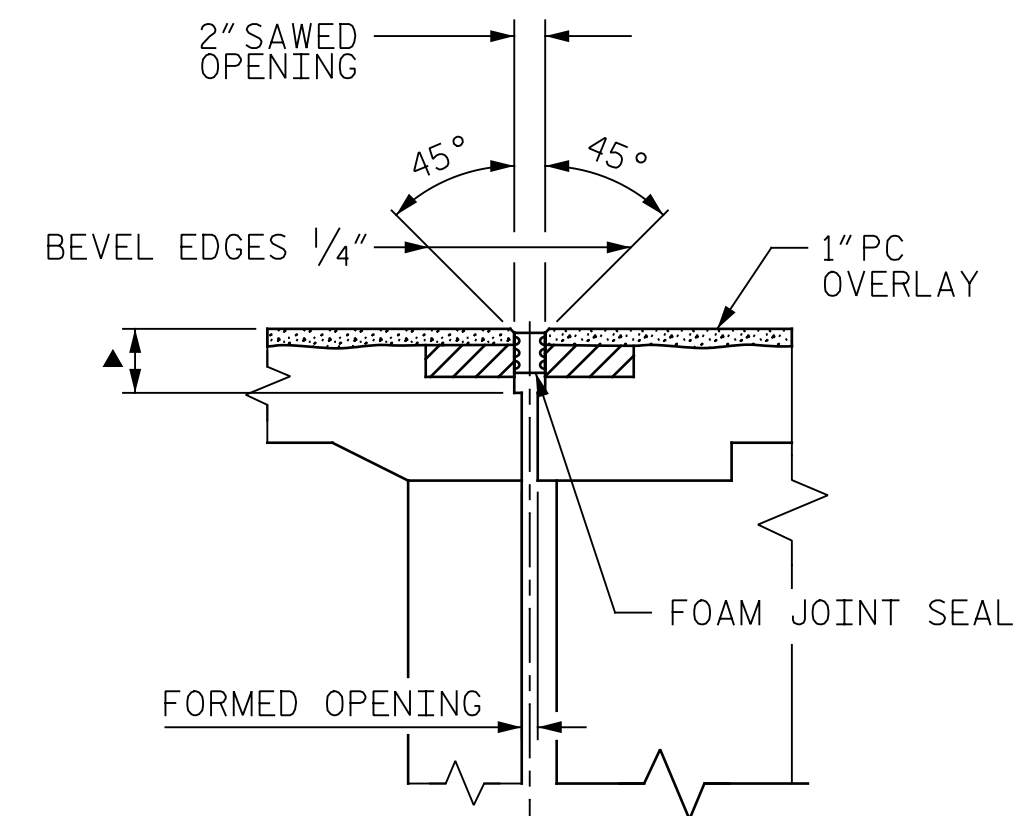
EXISTING



MINIMUM CLASS II SURFACE PREPARATION & SCARIFICATION



PROPOSED JOINT PRE-SAWED & PC OVERLAY



PROPOSED JOINT WITH SAWED DIMENSIONS

SECTION A-A

DEMOLISH BRIDGE JOINT AREA TO THE NECESSARY DEPTH, SUCH THAT CONCRETE REPAIR SHALL BE FOUNDED ON SOUND CONCRETE SUBSTRATE.

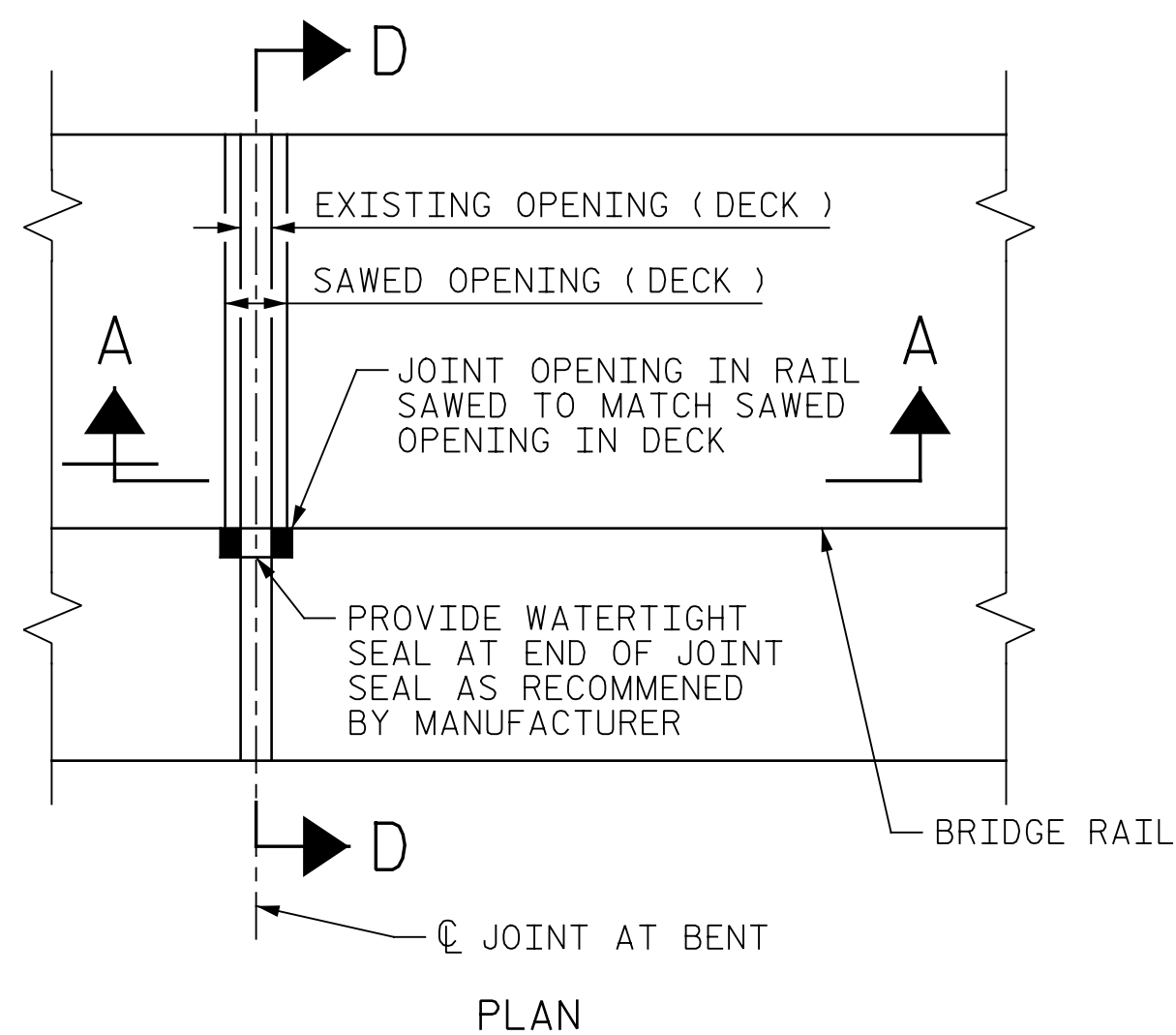
NOTES:

FOR CONCRETE DECK REPAIR FOR PC OVERLAY SEE SPECIAL PROVISIONS.

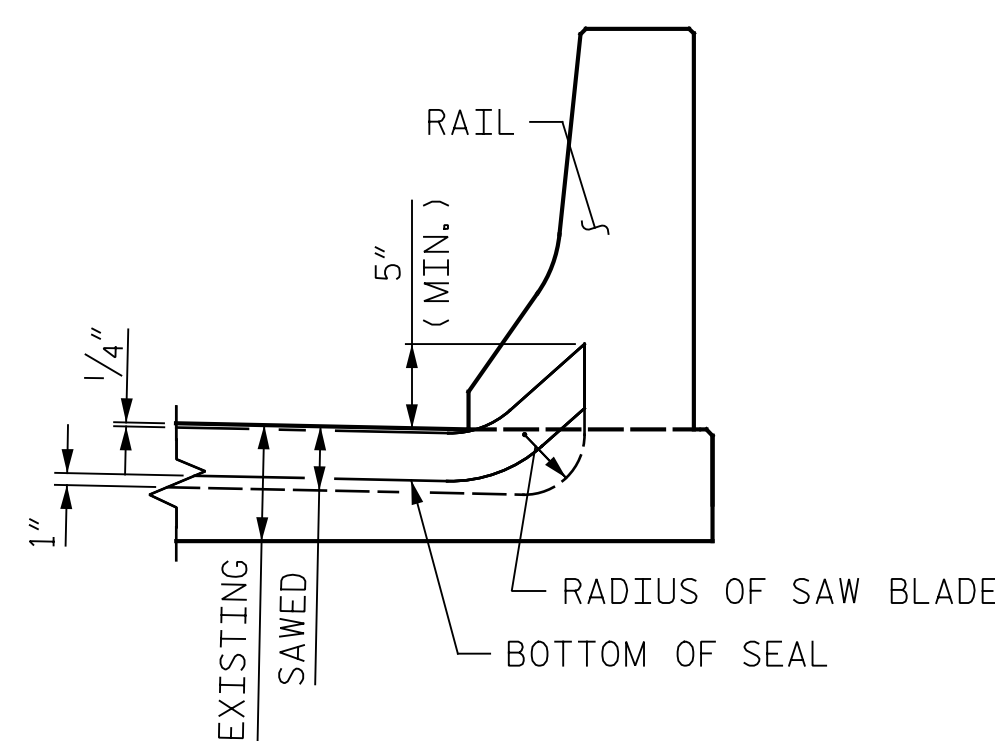
FOR FOAM JOINT SEALS FOR PRESERVATION, SEE SPECIAL PROVISIONS.

THE CONTRACTOR WILL NOT BE PERMITTED TO FORM THE JOINT OPENING FOR THE JOINT SEAL IN LIEU OF SAWING.

THE NOMINAL UNCOMPRESSED SEAL WIDTH OF FOAM JOINT SEAL SHALL BE 2" AT END BENT 1 AND END BENT 2.



PLAN



SECTION D-D

JOINT SEAL DETAILS AT BENT

PROJECT NO. B-4626
STANLY, ROWAN
AND DAVIDSON COUNTY
 BRIDGE NO. 790008

	FOAM JOINT SEAL (LF)
END BENT 1	33.5
END BENT 2	36

STATE OF NORTH CAROLINA
 DEPARTMENT OF TRANSPORTATION
 RALEIGH

JOINT DETAILS



DocuSigned by:
 Eric B. Nelson 9/13/2021

PLANS PREPARED BY:
Gannett Fleming
 Excellence Delivered As Promised
 One Glenwood Avenue
 Suite 900
 Raleigh, NC 27603
 (919) 420-7660
 NC Lic. No. F-0270

DOCUMENT NOT CONSIDERED FINAL UNLESS ALL SIGNATURES COMPLETED

REVISIONS						SHEET NO.
NO.	BY:	DATE:	NO.	BY:	DATE:	S2-18
1			3			TOTAL SHEETS
2			4			125

DRAWN BY: M. LEE DATE: 3/2021
 CHECKED BY: R. NELSON DATE: 4/2021

p:\gfn\pw.bentley.com\gfn\pw-01\Documents\Projects\63639\Task 010 B-4626\Discipline\Struct\DN\Rowan 8\Rowan 8 TOTAL PRJ 9/9/2021 1:25:59 PM pdf_mono_gfclt_FS.plt Rowan.pcn.tbl