

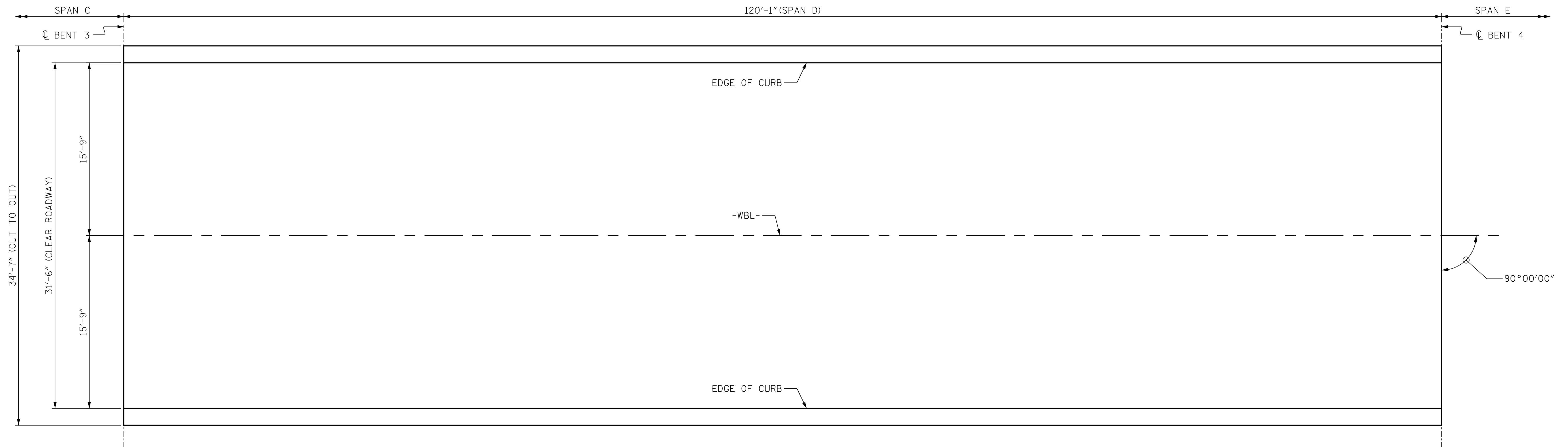
p:\w\gfn\p-w.bentley.com\gfn\p-w-01\Documents\Projects\63639\Task 010 B-4626\Discipline\Struct\DN\Rowan 8\Rowan 8 TOTAL PRJ 9/2/2021 3:38:08 PM pdf\_mono\_gfclt\_FS.plt Rowan.pcn.tbl

**NOTES:**

REPAIR LOCATIONS AND ESTIMATED QUANTITIES ARE GIVEN WITH THE BEST INFORMATION AVAILABLE. IF ADDITIONAL REPAIRS NOT SHOWN ON THE DRAWINGS ARE DEEMED NECESSARY BY THE ENGINEER, THE ENGINEER WILL NOTE ON THE DRAWINGS THE APPROXIMATE LOCATION AND DESCRIPTION OF THE REPAIRS AND ADJUST THE ACTUAL QUANTITIES ENTERED INTO THE AS-BUILT REPAIR QUANTITY TABLE.

PAYMENT FOR CLASS II SURFACE PREPARATION IS BASED UPON SQUARE YARDS OF ADDITIONAL DEMOLITION REQUIRED FOLLOWING SCARIFICATION OF BRIDGE DECK. SEE "OVERLAY SURFACE PREPARATION" SPECIAL PROVISION.

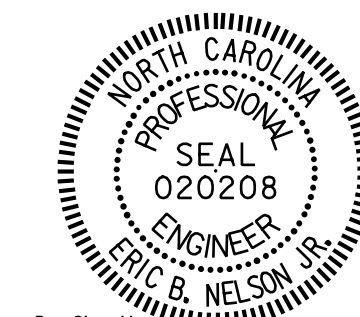
SUMMARY OF QUANTITIES FOR SPAN "D"		
	ESTIMATE	ACTUAL
SCARIFYING BRIDGE DECK	420.3 SY	
CLASS II SURFACE PREPARATION	- SY	
CONCRETE DECK REPAIR FOR PC OVERLAY	- SY	
SHOTBLASTING BRIDGE DECK	420.3 SY	
PC MATERIALS	14.6 CY	
PLACING AND FINISHING PC OVERLAY	420.3 SY	
GROOVING BRIDGE FLOORS	3422 SF	



PLAN OF SPAN "D"

PROJECT NO. B-4626  
STANLY, ROWAN  
AND DAVIDSON COUNTY  
 BRIDGE NO. 790008

- SCARIFYING OF BRIDGE DECK
- APPROX. AREA CLASS II SURFACE PREPARATION



DocuSigned by:  
Eric B. Nelson  
9/2/2021

STATE OF NORTH CAROLINA  
DEPARTMENT OF TRANSPORTATION  
RALEIGH

SURFACE PREPARATION  
SPAN "D"

REVISIONS						SHEET NO. S2-8
NO.	BY:	DATE:	NO.	BY:	DATE:	
1			3			TOTAL SHEETS 125
2			4			

DRAWN BY : M. LEE DATE : 3/2021  
 CHECKED BY : R. NELSON DATE : 4/2021

PLANS PREPARED BY:  
**Gannett Fleming**  
 Excellence Delivered *As Promised*

One Glenwood Avenue  
 Suite 900  
 Raleigh, NC 27603  
 (919) 420-7660  
 NC Lic. No. F-0270

DOCUMENT NOT CONSIDERED  
 FINAL UNLESS ALL  
 SIGNATURES COMPLETED