

p:\gfn\pw.bentley.com\gfn\pw-01\Documents\Projects\63639\Task 010 B-4626\Discipline\Struct\DN\Rowan 8\Rowan 8 TOTAL PRJ 9/2/2021 3:38:07 PM pdf_mono_gfclt_FS.plt Rowan.pcn.tbl

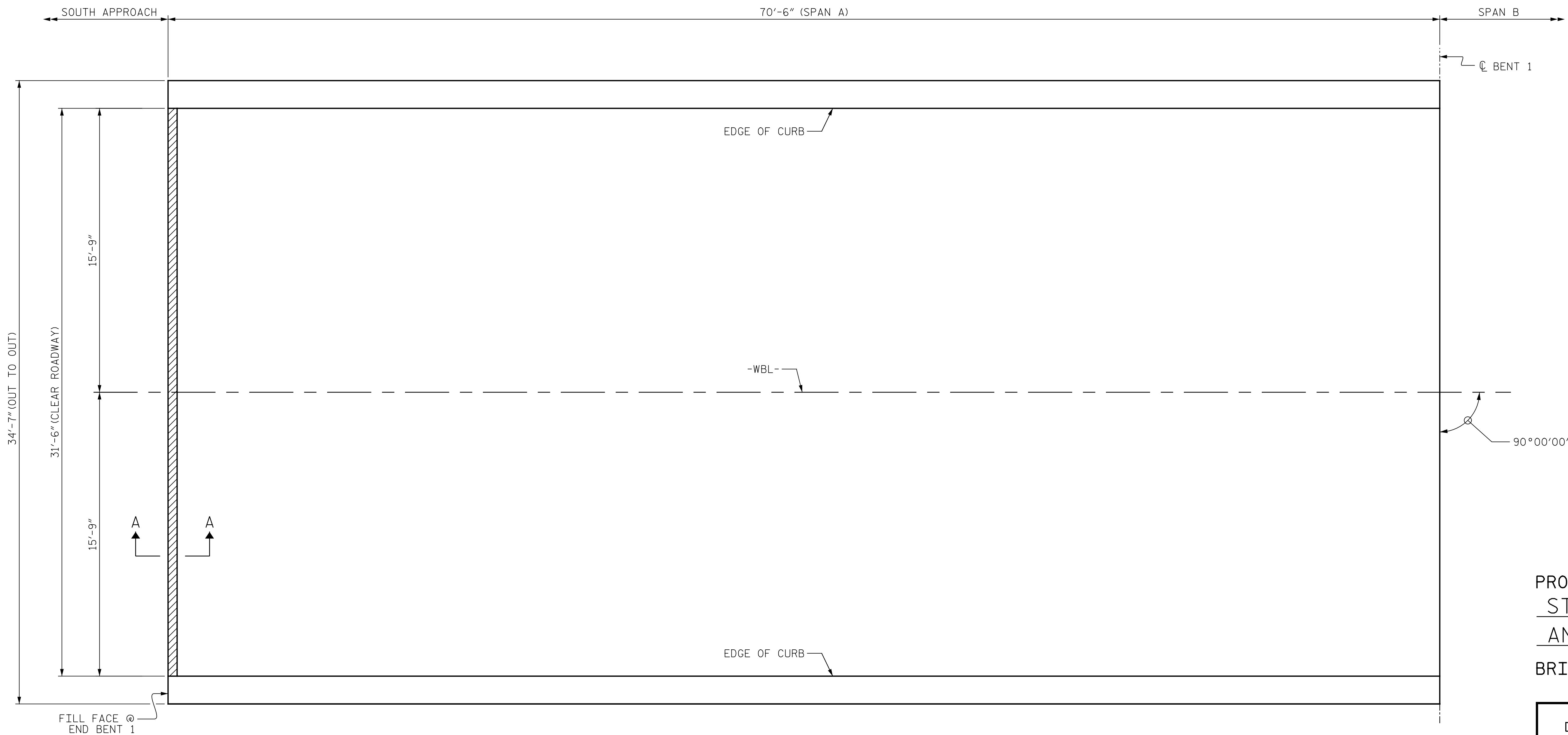
NOTES:

REPAIR LOCATIONS AND ESTIMATED QUANTITIES ARE GIVEN WITH THE BEST INFORMATION AVAILABLE. IF ADDITIONAL REPAIRS NOT SHOWN ON THE DRAWINGS ARE DEEMED NECESSARY BY THE ENGINEER, THE ENGINEER WILL NOTE ON THE DRAWINGS THE APPROXIMATE LOCATION AND DESCRIPTION OF THE REPAIRS AND ADJUST THE ACTUAL QUANTITIES ENTERED INTO THE AS-BUILT REPAIR QUANTITY TABLE.

PAYMENT FOR CLASS II SURFACE PREPARATION IS BASED UPON SQUARE YARDS OF ADDITIONAL DEMOLITION REQUIRED FOLLOWING SCARIFICATION OF BRIDGE DECK. SEE "OVERLAY SURFACE PREPARATION" SPECIAL PROVISION.

FOR EPOXY PROTECTIVE COATING, SEE SPECIAL PROVISIONS.

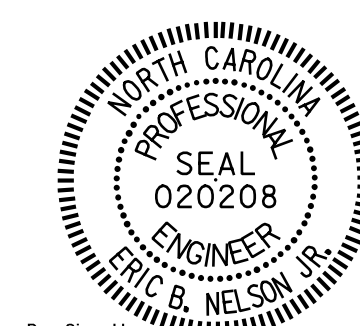
SUMMARY OF QUANTITIES FOR SPAN "A"		
TOP OF DECK REPAIRS		
	ESTIMATE	ACTUAL
SCARIFYING BRIDGE DECK	246.9 SY	
CLASS II SURFACE PREPARATION	1.8 SY	
CONCRETE DECK REPAIR FOR PC OVERLAY	1.8 SY	
SHOTBLASTING BRIDGE DECK	246.9 SY	
PC MATERIALS	7.7 CY	
PLACING AND FINISHING PC OVERLAY	246.9 SY	
GROOVING BRIDGE FLOORS	2011 SF	
TOP OF CAP EPOXY COATINGS		
END BENT 1	91 SF	



PROJECT NO. B-4626
STANLY, ROWAN
AND DAVIDSON COUNTY
BRIDGE NO. 790008

PLAN OF SPAN "A"
(SEE SHEET NO. S2-18 FOR SECTION A-A)

- SCARIFYING OF BRIDGE DECK
- APPROX. AREA CLASS II SURFACE PREPARATION



STATE OF NORTH CAROLINA
DEPARTMENT OF TRANSPORTATION
RALEIGH

**SURFACE PREPARATION
SPAN "A"**

REVISIONS					
NO.	BY:	DATE:	NO.	BY:	DATE:
1			3		
2			4		

SHEET NO. S2-5
TOTAL SHEETS 125

DRAWN BY : M. LEE DATE : 3/2021
CHECKED BY : R. NELSON DATE : 4/2021

PLANS PREPARED BY:
Gannett Fleming
Excellence Delivered As Promised
One Glenwood Avenue
Suite 900
Raleigh, NC 27603
(919) 420-7660
NC Lic. No. F-0270

DocuSigned by:
Eric B. Nelson 9/2/2021
1628032119274C0
DOCUMENT NOT CONSIDERED
FINAL UNLESS ALL
SIGNATURES COMPLETED