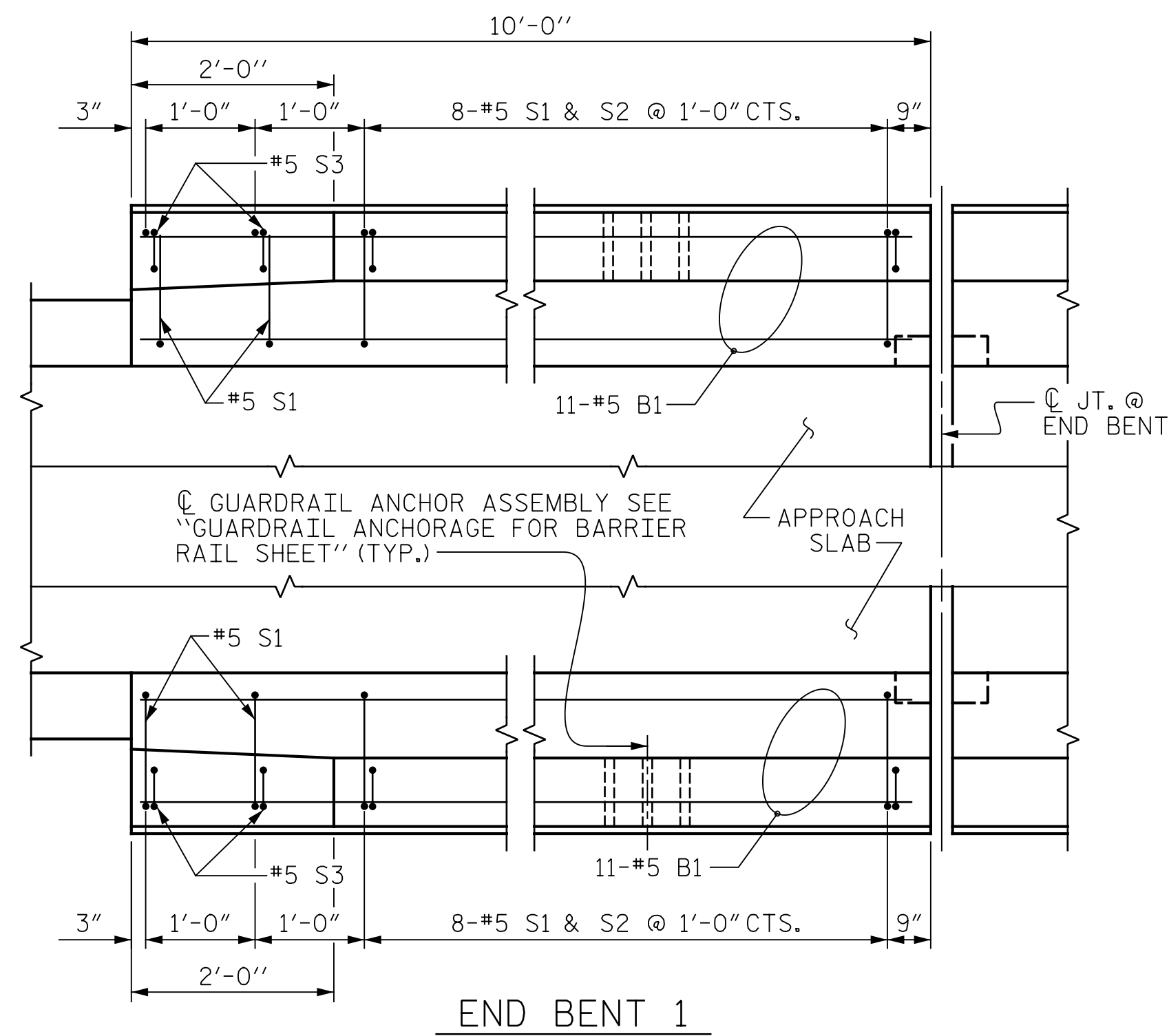
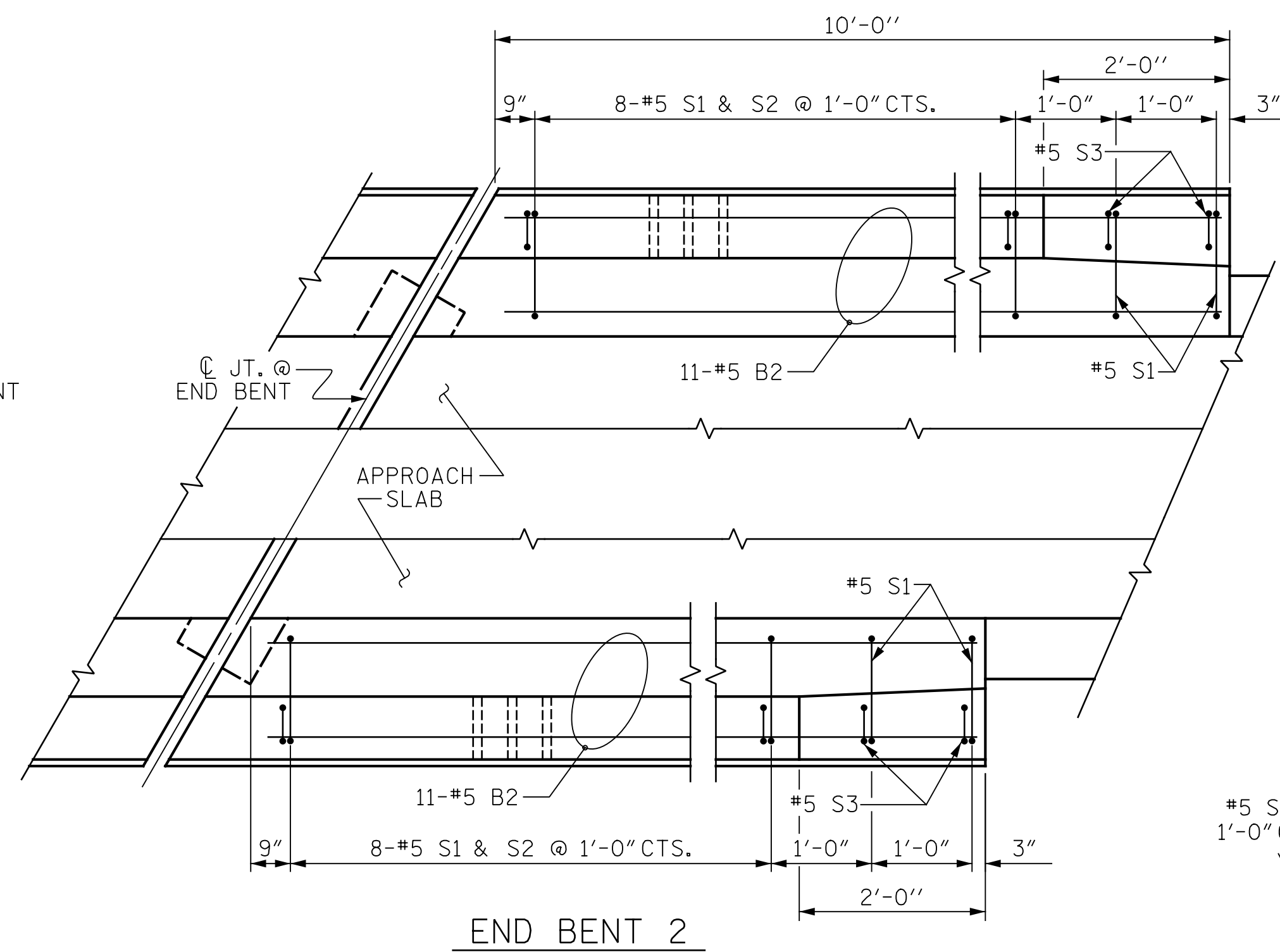


p:\gfn\p-w\ben\p-w\01\Documents\Projects\63639\Task 010 B-4626\Discipline\Struct\DN\Rowan 3\Archives\Delete\401_209_B4626_SMU_AS02_790003_103 9/2/2021 4:08:47 PM pdf_color_gfcbt_FS.plt Rowan.pen.tbi

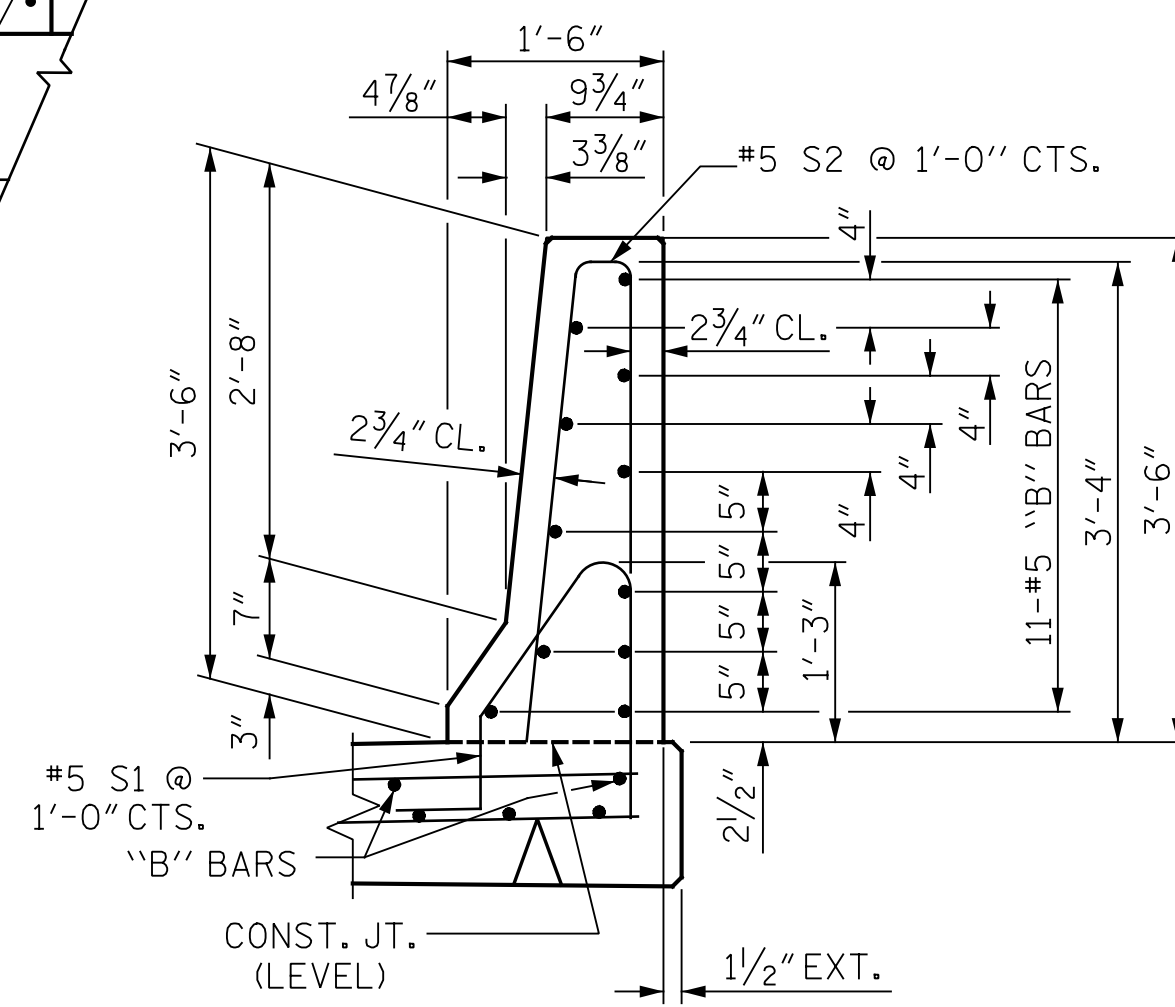


END BENT 1

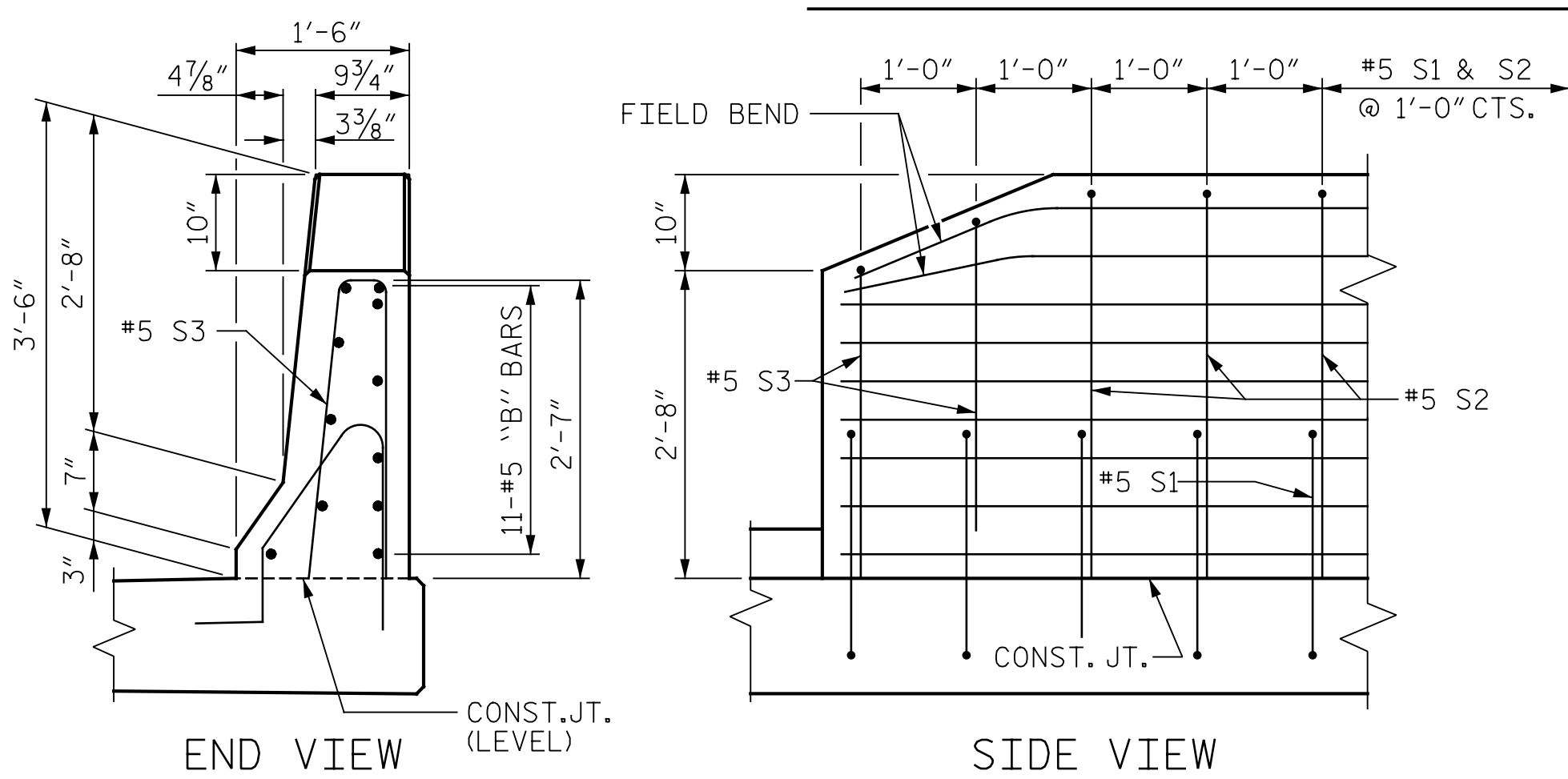


END BENT 2

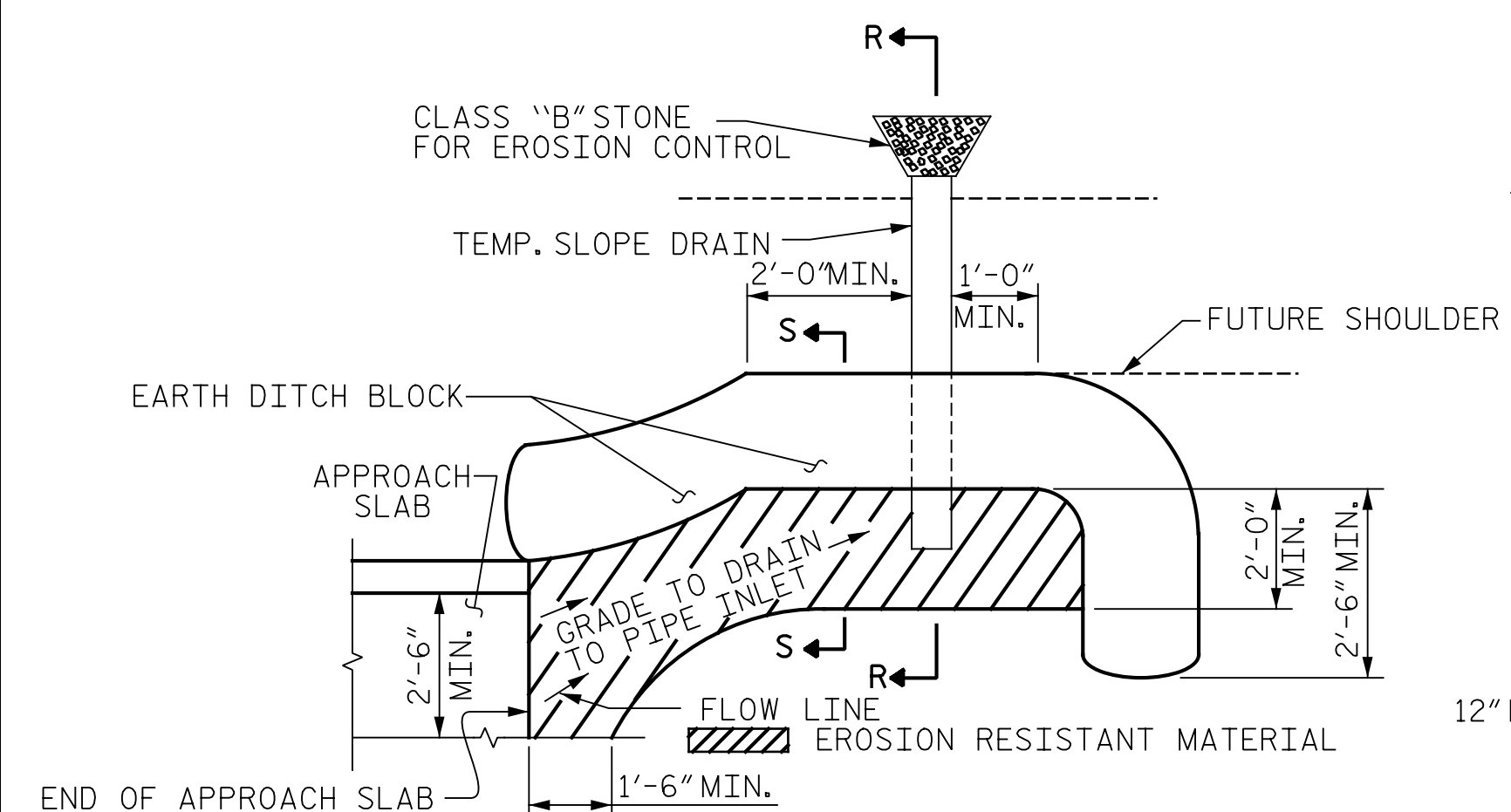
PLAN OF BARRIER RAIL



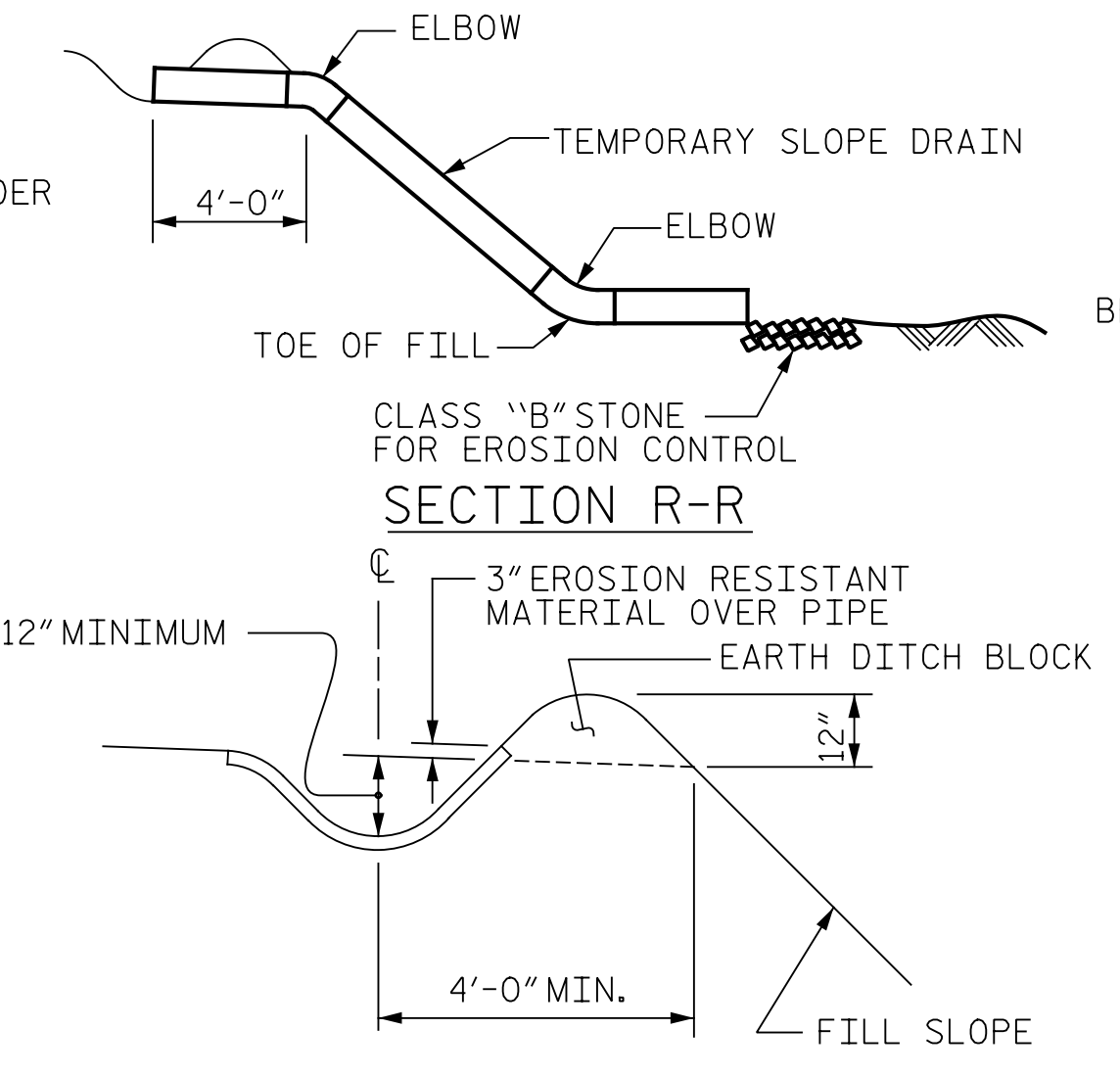
SECTION THRU RAIL



END OF RAIL DETAILS



PLAN VIEW



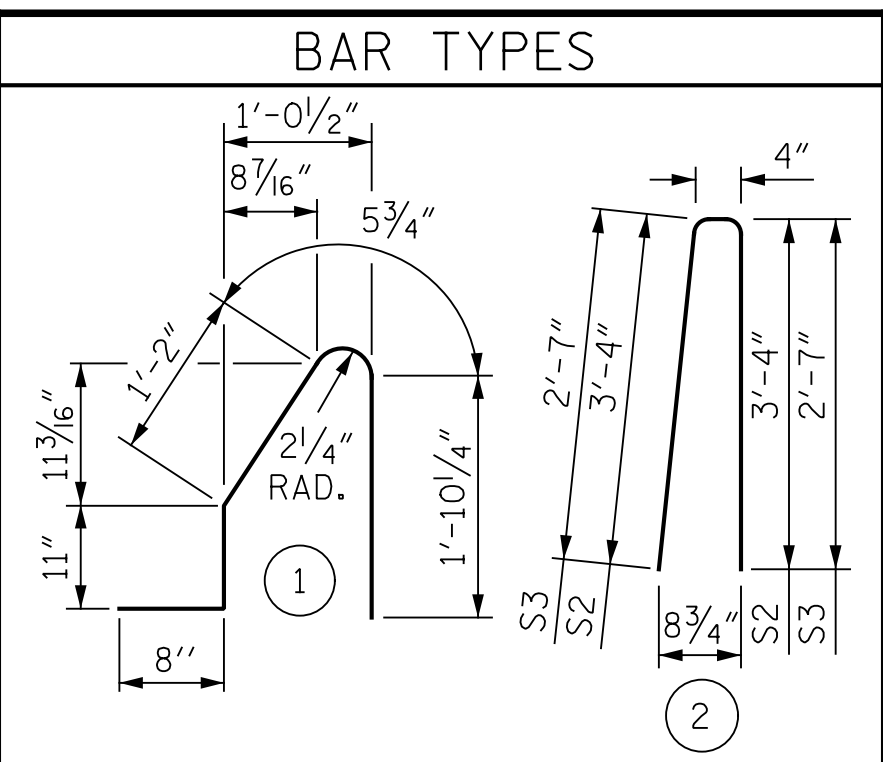
SECTION S-S

TEMPORARY BERM AND SLOPE DRAIN DETAILS

(TO BE USED WHEN SHOULDER BERM GUTTER IS REQUIRED)

DRAWN BY : T. HARTLEY DATE : 03/2021
 CHECKED BY : R. FISHER DATE : 05/2021
 DESIGN ENGINEER OF RECORD : R. NELSON DATE : 05/2021

NOTES
 THE COST OF THE BARRIER RAIL ON THE APPROACH SLAB SHALL BE INCLUDED IN THE LINEAR FOOT CONTRACT PRICE BID FOR "CONCRETE BARRIER RAIL".
 THE BARRIER RAIL ON EACH APPROACH SLAB SHALL NOT BE CAST UNTIL ALL APPROACH SLAB CONCRETE HAS BEEN CAST AND HAS REACHED A MINIMUM COMPRESSIVE STRENGTH OF 3,000 PSI.
 ALL REINFORCING STEEL IN BARRIER RAILS SHALL BE EPOXY COATED.

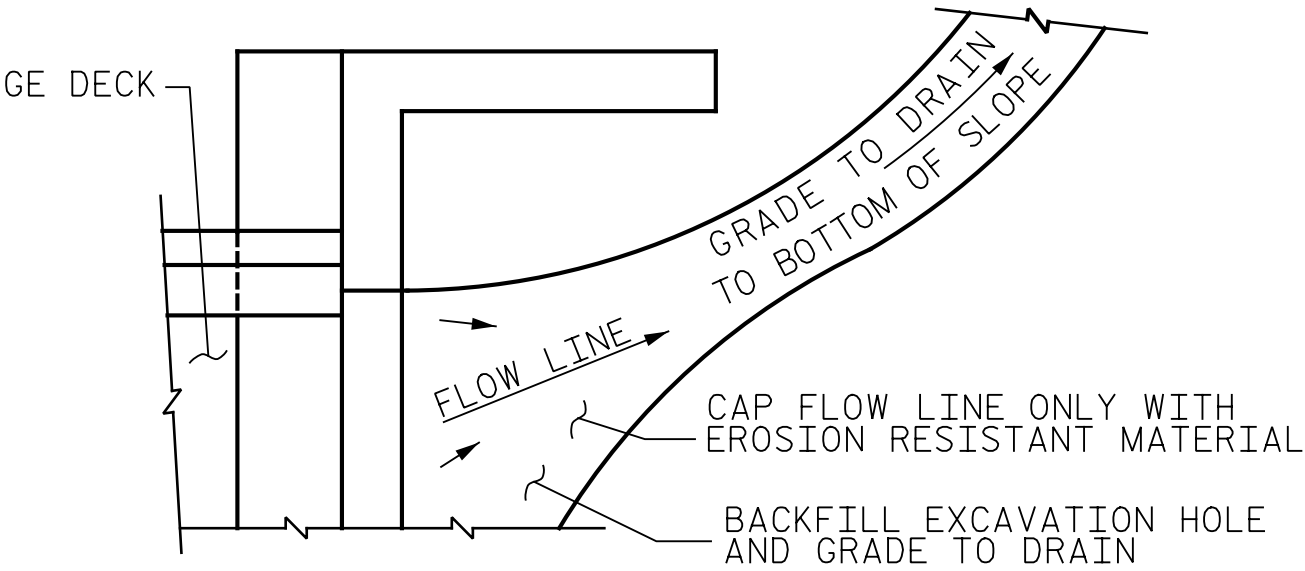


ALL BAR DIMENSIONS ARE OUT TO OUT

BILL OF MATERIAL

FOR CONCRETE BARRIER RAIL ONLY					
BAR	NO.	SIZE	TYPE	LENGTH	WEIGHT
* B1	22	#5	STR.	9'-7"	220
* B2	22	#5	STR.	9'-9"	224
* S1	40	#5	1	5'-1"	212
* S2	32	#5	2	7'-0"	234
* S3	8	#5	2	5'-6"	46

* EPOXY COATED REINFORCING STEEL 936 LBS.
 CLASS AA CONCRETE 5.4 CU. YDS.
 CONCRETE BARRIER RAIL 40.58 LIN. FT.



TEMPORARY DRAINAGE DETAIL

NOTE: IF THE APPROACH SLAB IS NOT CONSTRUCTED IMMEDIATELY AFTER THE BACKFILLING OF THE END BENT EXCAVATION, GRADE TO DRAIN TO THE BOTTOM OF THE SLOPE AND PROVIDE EROSION RESISTANT MATERIAL, SUCH AS FIBERGLASS ROVING OR AS DIRECTED BY THE ENGINEER TO PREVENT SOIL EROSION AND TO PROTECT THE AREA ADJACENT TO THE STRUCTURE. THE CONTRACTOR WILL BE REQUIRED TO REMOVE THESE MATERIALS PRIOR TO CONSTRUCTION OF THE APPROACH SLAB.

PROJECT NO. B-4626
 STANLY, ROWAN
 AND DAVIDSON COUNTY
 STATION: 45+22.65 -EBL-

SHEET 2 OF 2

STATE OF NORTH CAROLINA
 DEPARTMENT OF TRANSPORTATION
 RALEIGH
 STANDARD
 BRIDGE APPROACH
 SLAB DETAILS



PLANS PREPARED BY:
Gannett Fleming
 Excellence Delivered As Promised
 One Glenwood Avenue
 Suite 900
 Raleigh, NC 27603
 (919) 420-7660
 NC Lic. No. F-0270

DocuSigned by:
 Eric B. Nelson
 9/2/2021
 DOCUMENT NOT CONSIDERED FINAL UNLESS ALL SIGNATURES COMPLETED

REVISIONS					
NO.	BY:	DATE:	NO.	BY:	DATE:
1			3		
2			4		

SHEET NO.
 S1-103
 TOTAL SHEETS
 125

STD. NO. BAS4 (SHT 3)