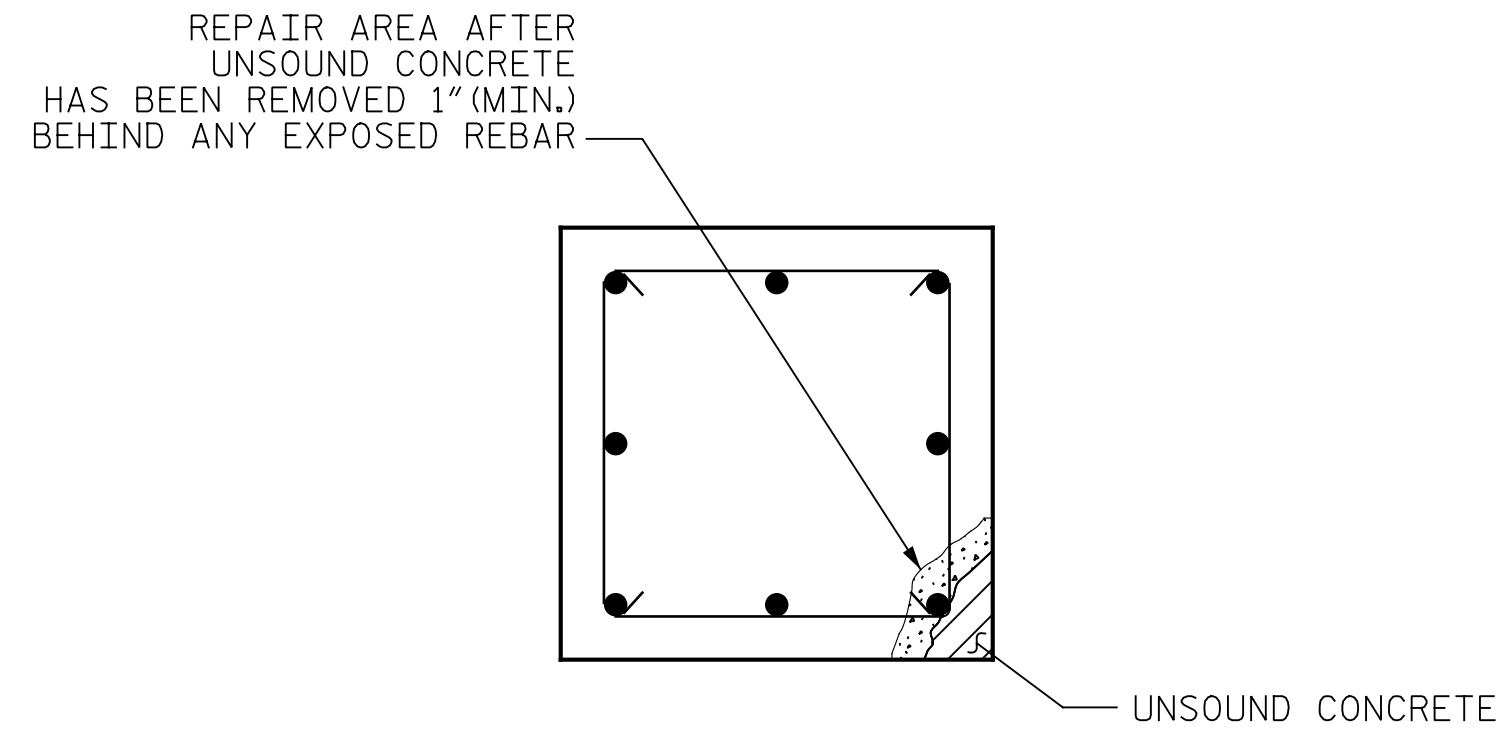
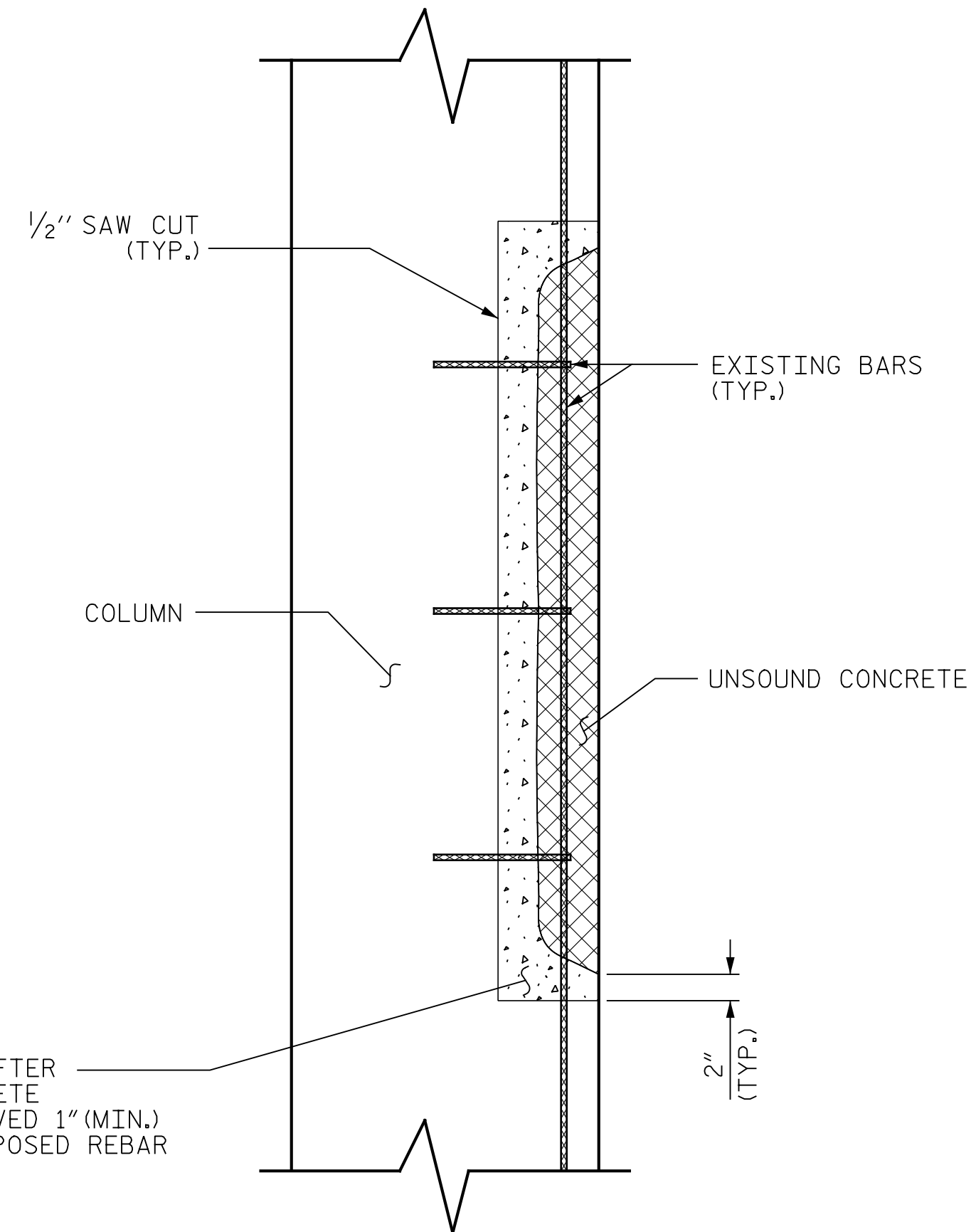


p:\gfn\pw\ben\h\com\mgfnet-pw-01\Documents\Projects\63639\Task 010 B-4626\Discipline\Struct\DN\Rowan 3\Archives\Delete\401-203_B4626_SMU_Concrete Repair_790003_100
 9/2/2021 4:08:33 PM pdf_color_gfclt_FS.plt Rowan.pen.tbl



SECTION
 (COLUMN AT BENT 1 THRU 4 AND 9 THRU 12 SHOWN.
 REPAIR AT BENT 5 THRU 8 SIMILAR.)



* REPAIR AREA AFTER UNSOUND CONCRETE HAS BEEN REMOVED 1" (MIN.) BEHIND ANY EXPOSED REBAR

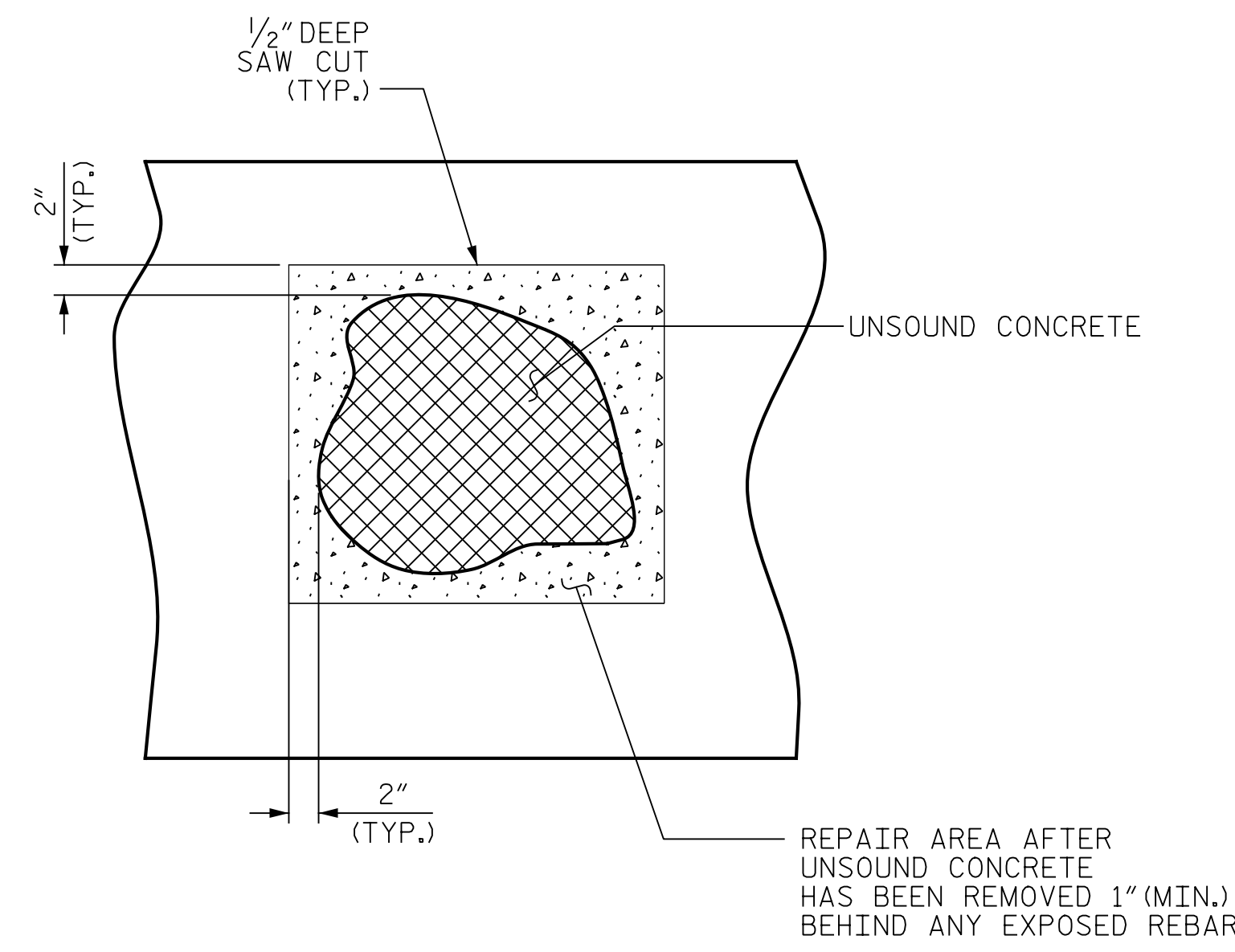
* REPAIR LENGTH SHALL NOT EXCEED 10 FEET.

ELEVATION

COLUMN REPAIR

REPAIR SEQUENCE:

- SOUND CONCRETE TO DETERMINE EXTENT OF REPAIR LOCATION.
- REMOVE SURFACE CONCRETE TO VERIFY SAWCUT DEPTH WILL NOT DAMAGE EXISTING REINFORCING STEEL. SAW CUT AROUND REPAIR AREA TO A NOMINAL DEPTH OF 1/2".
- REMOVE CONCRETE WITHIN SAW CUT AREA TO MINIMUM 1" BEHIND REBAR.
- USE A WIRE BRUSH TO CLEAN ALL EXPOSED REINFORCING STEEL. FOR BARS WITH MORE THAN 10% SECTION LOSS, SPLICE AND SECURELY TIE SUPPLEMENTAL REINFORCING BARS AS NEEDED.
- REMOVE ALL LOOSE OR WEAKENED MATERIAL THEN CLEAN THE REPAIR AREA OF DIRT, GREASE, OIL, AND FOREIGN MATTER.
- PREPARE SURFACE AND APPLY STRUCTURAL SHOTCRETE.



FACE REPAIR

PROJECT NO. B-4626
STANLY, ROWAN
AND DAVIDSON COUNTY
 STATION: 45+22.65 -EBL-



STATE OF NORTH CAROLINA
 DEPARTMENT OF TRANSPORTATION
 RALEIGH

TYPICAL COLUMN REPAIR DETAILS

DRAWN BY :	J. MYA	DATE :	04/2021
CHECKED BY :	J. YANACCONI	DATE :	05/2021
DESIGN ENGINEER OF RECORD:	R. NELSON	DATE :	05/2021

PLANS PREPARED BY:
Gannett Fleming
 Excellence Delivered As Promised

One Glenwood Avenue
 Suite 900
 Raleigh, NC 27603
 (919) 420-7660
 NC Lic. No. F-0270

DocuSigned by:
 Eric B. Nelson
 9/2/2021
 NCES002119274CO

DOCUMENT NOT CONSIDERED FINAL UNLESS ALL SIGNATURES COMPLETED

REVISIONS						SHEET NO.
NO.	BY:	DATE:	NO.	BY:	DATE:	TOTAL SHEETS
1			3			125
2			4			