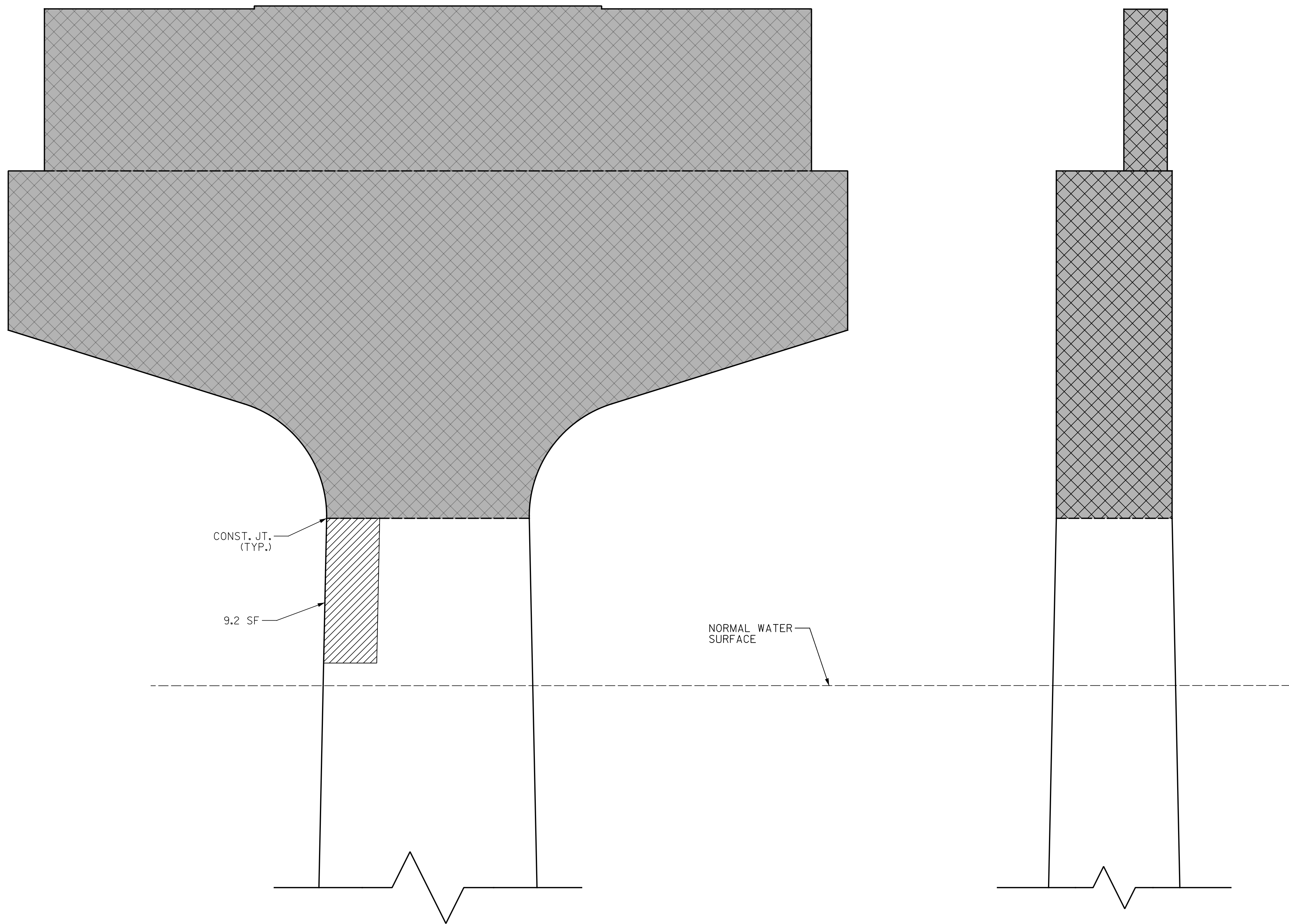


p:\gfn\pw.bentley.com\gfn\pw-01\Documents\Projects\63639\Task 010 B-4626\Discipline\Struct\DN\Rowan 3\Archives\Delete\401-173-B4626-SMU-B5F02-790003_085
 9/2/2021 4:06:40 PM pdf_color_gfclt_FS.plt Rowan.pen.tbl



CONST. JT.
(TYP.)

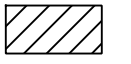


9.2 SF

NORMAL WATER SURFACE

ELEVATION
(SPAN "F" FACE)

END VIEW
(LEFT FACE)

NOTES:
 REPAIR LOCATIONS AND ESTIMATE OF QUANTITIES ARE BASED ON THE BEST INFORMATION AVAILABLE. IF ADDITIONAL REPAIRS NOT SHOWN ON THE DRAWINGS ARE DEEMED NECESSARY BY THE ENGINEER, THE ENGINEER WILL NOTE ON THE DRAWINGS THE APPROXIMATE LOCATION AND DESCRIPTION OF THE REPAIRS AND ENTER THE ACTUAL QUANTITIES INTO THE AS-BUILT REPAIR QUANTITY TABLE.
 FOR SHOTCRETE REPAIRS, SEE SPECIAL PROVISIONS.
 FOR EPOXY RESIN INJECTION, SEE SPECIAL PROVISIONS.
 WHEN COLUMN REPAIRS ARE INDICATED TO GROUND LINE, EXTEND REPAIR A MINIMUM OF 1' BELOW GROUND LINE.
 FOR PROPOSED BENT CAP REPLACEMENT DETAILS, SEE SUBSTRUCTURE BENT SHEETS.

-  - SHOTCRETE REPAIR
-  - EPOXY RESIN INJECTION
-  - DEMOLITION (SEE "CAP DEMOLITION DETAILS" SHEET)

PROJECT NO. B-4626
STANLY, ROWAN
AND DAVIDSON COUNTY
 STATION: 45+22.65 -EBL-

SHEET 2 OF 2

STATE OF NORTH CAROLINA
 DEPARTMENT OF TRANSPORTATION
 RALEIGH

SUBSTRUCTURE REPAIR
 BENT 5
 SPAN "F" FACE



DRAWN BY : T. HARTLEY/J.MYA DATE : 03/2021
 CHECKED BY : J. YANACCONO DATE : 05/2021
 DESIGN ENGINEER OF RECORD: R. NELSON DATE : 05/2021

PLANS PREPARED BY:

 Excellence Delivered As Promised

One Glenwood Avenue
 Suite 900
 Raleigh, NC 27603
 (919) 420-7660
 NC Lic. No. F-0270

REVISIONS						SHEET NO.
NO.	BY:	DATE:	NO.	BY:	DATE:	S1-85
1			3			TOTAL SHEETS
2			4			125

DOCUMENT NOT CONSIDERED FINAL UNLESS ALL SIGNATURES COMPLETED