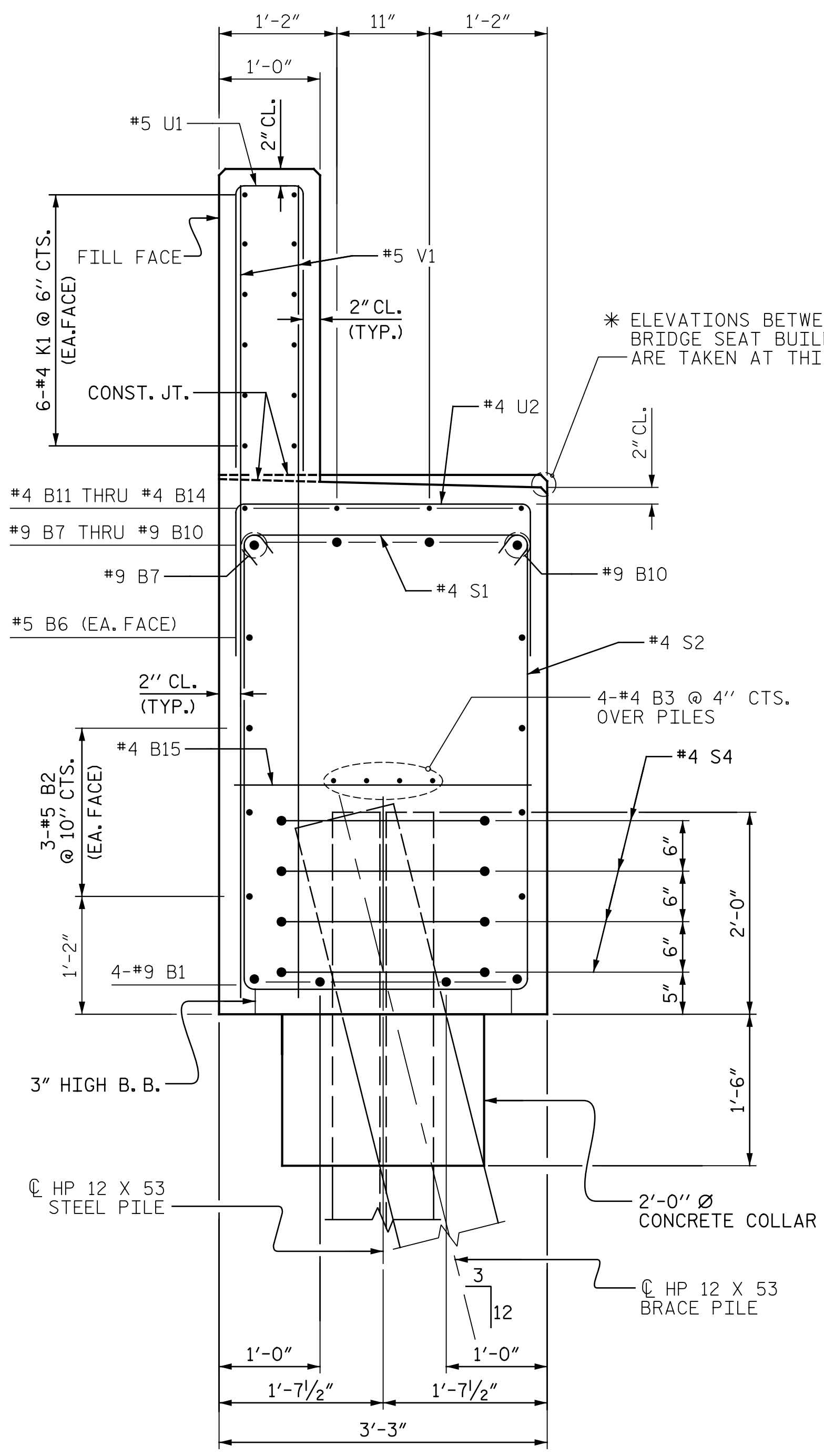
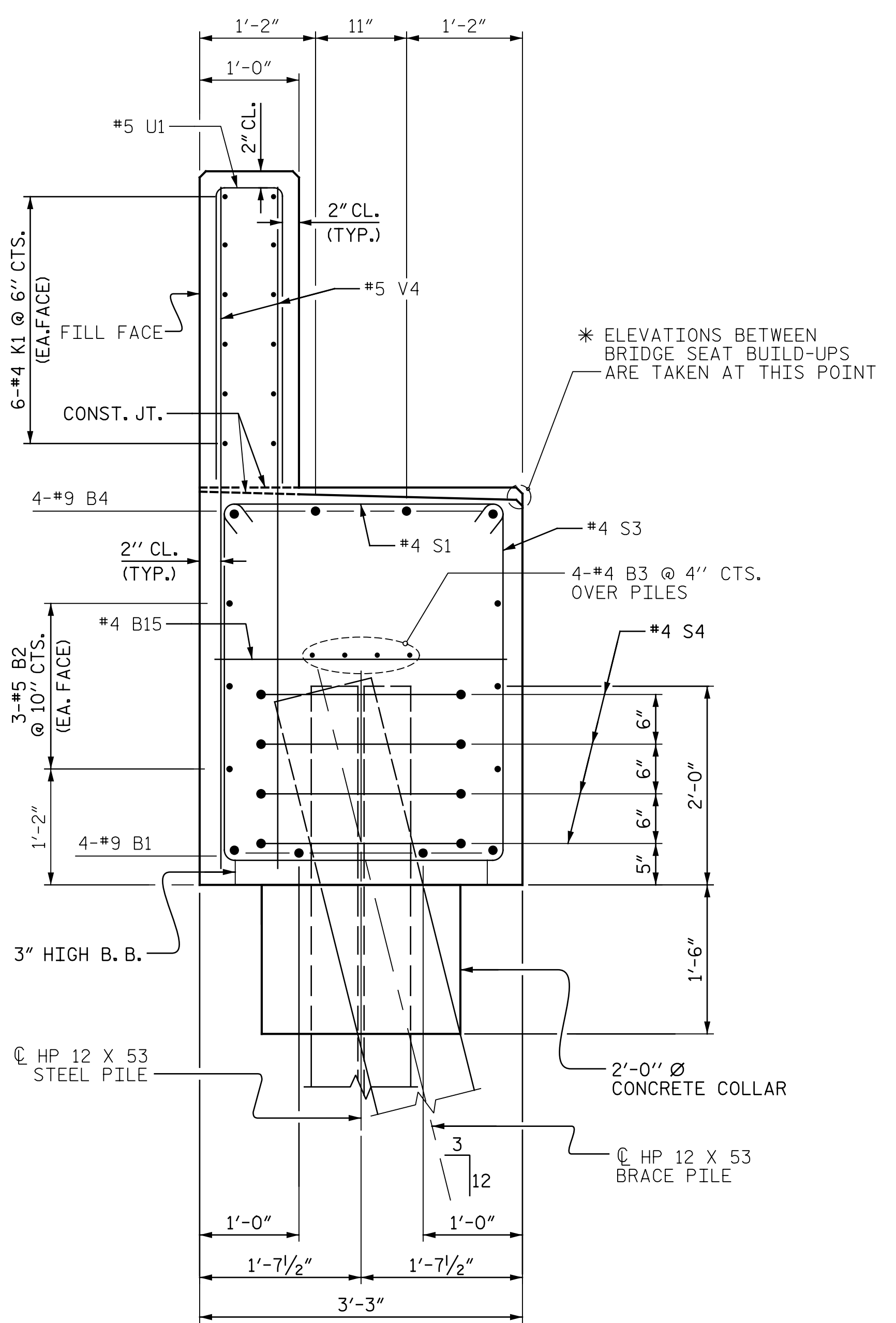


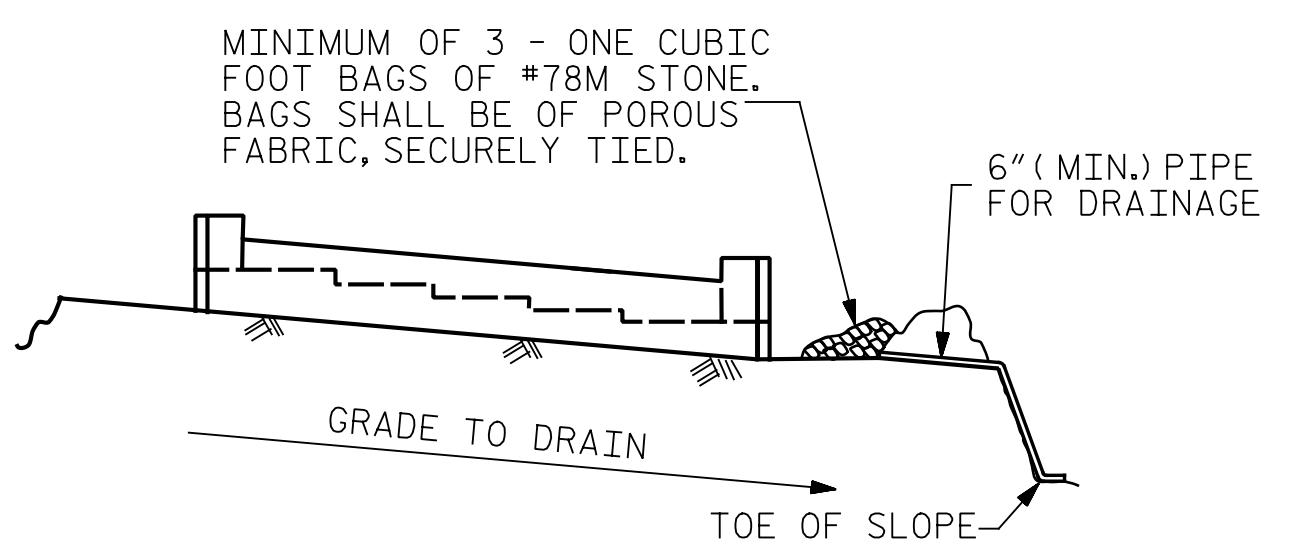
p:\gfn\p-w\ben\p-w\01\Documents\Projects\63639\Task 010 B-4626\Discipline\Struct\DN\Rowan 3\Archives\Delete\401_153_B4626_SMU_E203_790003_075
 9/2/2021 4:05:27 PM pdf_color_gfcolt_FS.plt Rowan.pen.tbl



SECTION A-A



SECTION B-B

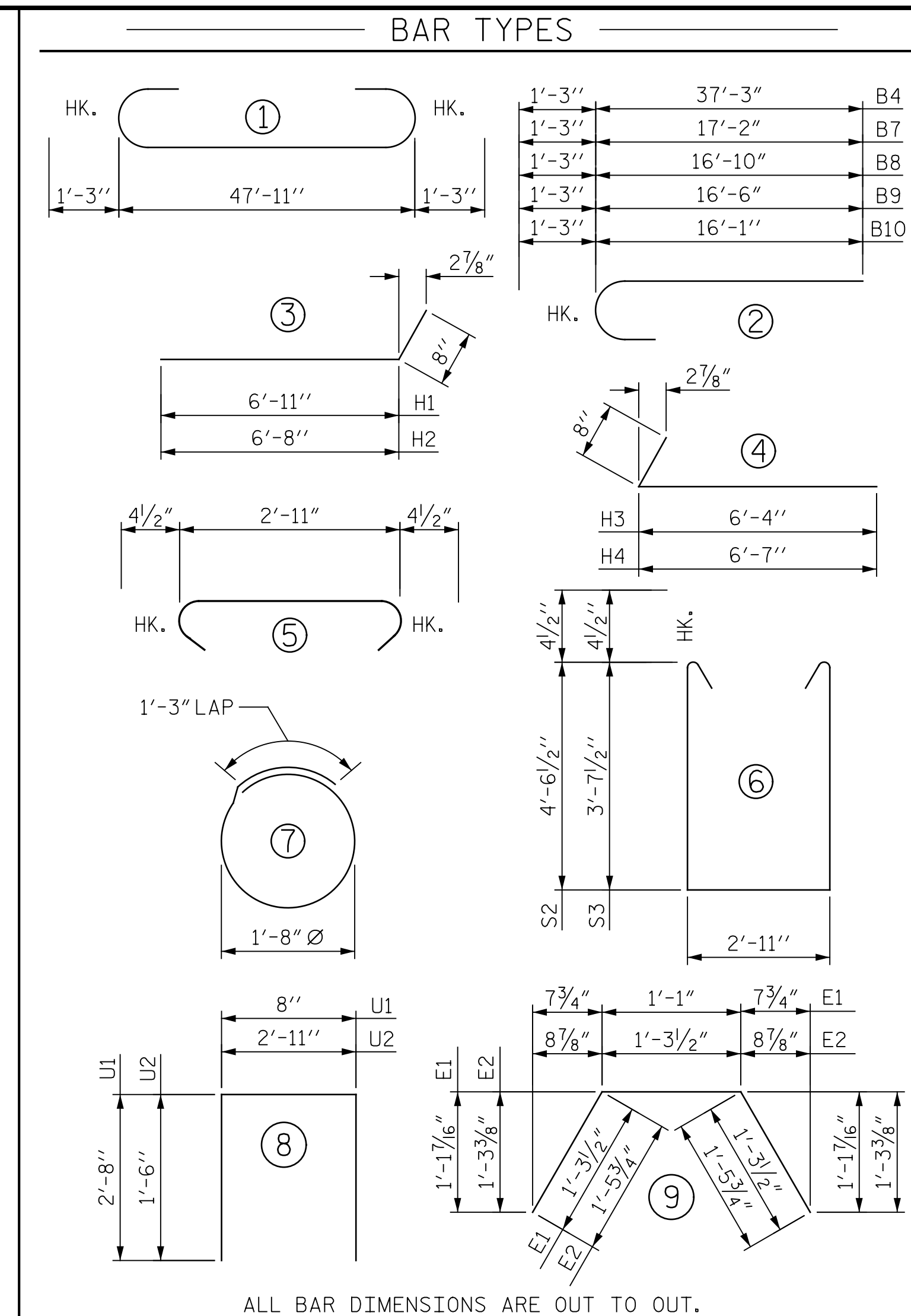


BAGGED STONE AND PIPE SHALL BE PLACED IMMEDIATELY AFTER COMPLETION OF END BENT EXCAVATION. PIPE MAY BE EITHER CONCRETE, CORRUGATED STEEL, CORRUGATED ALUMINUM ALLOY, OR CORRUGATED PLASTIC. PERFORATED PIPE WILL NOT BE ALLOWED.

BAGGED STONE SHALL REMAIN IN PLACE UNTIL THE ENGINEER DIRECTS THAT IT BE REMOVED. THE CONTRACTOR SHALL REMOVE AND DISPOSE OF SILT ACCUMULATIONS AT BAGGED STONE WHEN SO DIRECTED BY THE ENGINEER. BAGS SHALL BE REMOVED AND REPLACED WHENEVER THE ENGINEER DETERMINES THAT THEY HAVE DETERIORATED AND LOST THEIR EFFECTIVENESS.

NO SEPARATE PAYMENT WILL BE MADE FOR THIS WORK AND THE ENTIRE COST OF THIS WORK SHALL BE INCLUDED IN THE UNIT CONTRACT PRICE FOR THE SEVERAL PAY ITEMS.

TEMPORARY DRAINAGE AT END BENT



BILL OF MATERIAL					
BAR	NO.	SIZE	TYPE	LENGTH	WEIGHT
B1	4	#9		50'-5"	686
B2	6	#5	STR	48'-1"	301
B3	8	#4	STR	25'-4"	135
B4	4	#9	2	38'-6"	524
B5	8	#4	STR	8'-8"	46
B6	2	#5	STR	14'-0"	29
B7	1	#9	2	18'-5"	63
B8	1	#9	2	18'-1"	61
B9	1	#9	2	17'-9"	60
B10	1	#9	2	17'-4"	59
B11	1	#4	STR	8'-8"	6
B12	1	#4	STR	8'-3"	6
B13	1	#4	STR	7'-11"	5
B14	1	#4	STR	7'-7"	5
B15	14	#4	STR	2'-11"	27
E1	4	#4	9	3'-7"	10
E2	4	#4	9	4'-3"	11
H1	14	#4	3	7'-7"	71
H2	14	#4	3	7'-4"	69
H3	11	#4	4	7'-0"	51
H4	11	#4	4	7'-3"	53
K1	12	#4	STR	25'-4"	203
K2	12	#4	STR	3'-9"	30
S1	54	#4	5	3'-8"	132
S2	19	#4	6	12'-9"	162
S3	35	#4	6	10'-11"	255
S4	24	#4	7	6'-6"	104
U1	40	#5	8	6'-0"	250
U2	26	#4	8	5'-11"	103
V1	20	#5	STR	7'-8"	160
V2	20	#5	STR	7'-4"	153
V3	20	#5	STR	7'-0"	146
V4	20	#5	STR	6'-8"	139
V5	23	#4	STR	9'-8"	149
V6	22	#4	STR	8'-3"	121

REINFORCING STEEL LBS. 4,385

CLASS A CONCRETE			
POUR #1	CAP, LOWER WINGS, COLLARS & PILE CAP	CU. YD.	29.7
POUR #2	BACKWALL & UPPER WINGS	CU. YD.	8.2
TOTAL:		CU. YD.	37.9

HP 12 X 53 STEEL PILES			
NO. 6		LIN. FT. =	90.0
STEEL PILE POINTS			
NO. 6		EACH	

PROJECT NO. B-4626
STANLY, ROWAN
AND DAVIDSON COUNTY
 STATION: 45+22.65 -EBL-
 SHEET 3 OF 3

STATE OF NORTH CAROLINA
 DEPARTMENT OF TRANSPORTATION
 RALEIGH

SUBSTRUCTURE
 END BENT 2



PLANS PREPARED BY:
Gannett Fleming
 Excellence Delivered As Promised
 One Glenwood Avenue
 Suite 900
 Raleigh, NC 27603
 (919) 420-7660
 NC Lic. No. F-0270

DOCUMENT NOT CONSIDERED FINAL UNLESS ALL SIGNATURES COMPLETED

REVISIONS					
NO.	BY:	DATE:	NO.	BY:	DATE:
1			3		
2			4		

DRAWN BY: J. MYA DATE: 04/2021
 CHECKED BY: J. YANACCONI DATE: 05/2021
 DESIGN ENGINEER OF RECORD: R. NELSON DATE: 05/2021

SHEET NO. S1-75
 TOTAL SHEETS 125