

p:\gfn\et-pw\Bentley.com\gfn\et-pw\01\Documents\Projects\63639\Task 010 B-4626\Discipline\Struct\DN\Rowan 3\Archives\Delete\401_149_B4626_SMU_E201_790003_073
 9/2/2021 4:05:12 PM pdf_color_gfct_FS.plt Rowan.pen.tbl

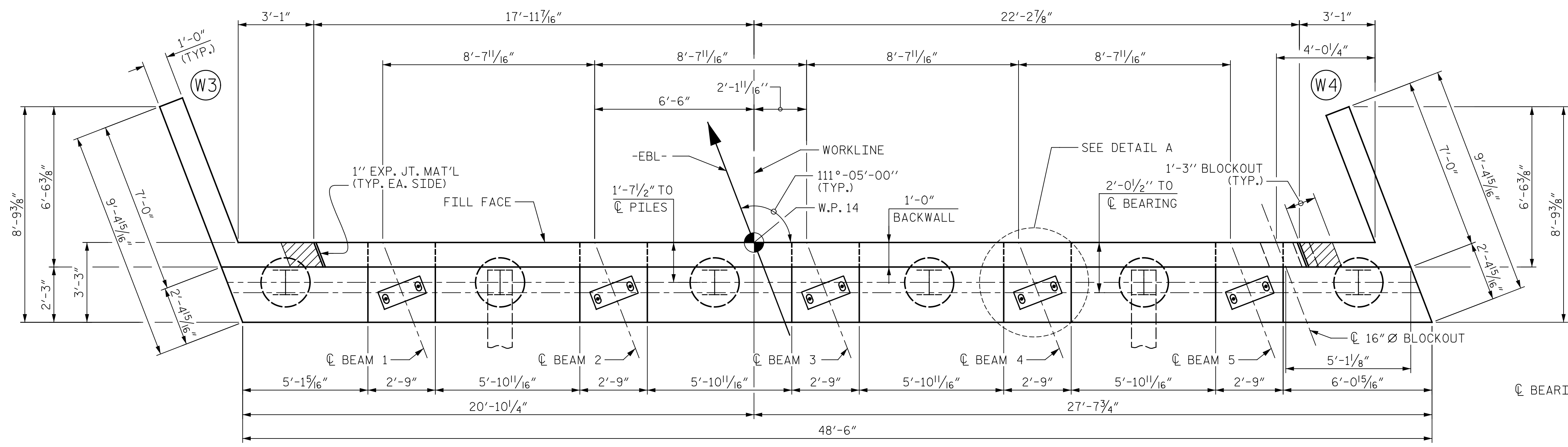
NOTES:
 STIRRUPS AND U2 BARS IN CAP MAY BE SHIFTED AS NECESSARY TO CLEAR ANCHOR BOLTS.
 FOR PILE SPLICE DETAILS, SEE END BENT 1.
 BACKWALL SHALL BE PLACED BEFORE APPLYING THE EPOXY PROTECTIVE COATING.
 THE TOP SURFACE AREAS OF THE END BENT CAPS SHALL BE CURED IN ACCORDANCE WITH THE STANDARD SPECIFICATIONS EXCEPT THE MEMBRANE CURING COMPOUND METHOD SHALL NOT BE USED.

* THE TOP SURFACE OF THE END BENT CAP EXCEPT THE BRIDGE SEAT BUILDUPS SHALL BE SLOPED TRANSVERSELY FROM THE FILL FACE TO THE BACK FACE AT THE RATE OF 2%.

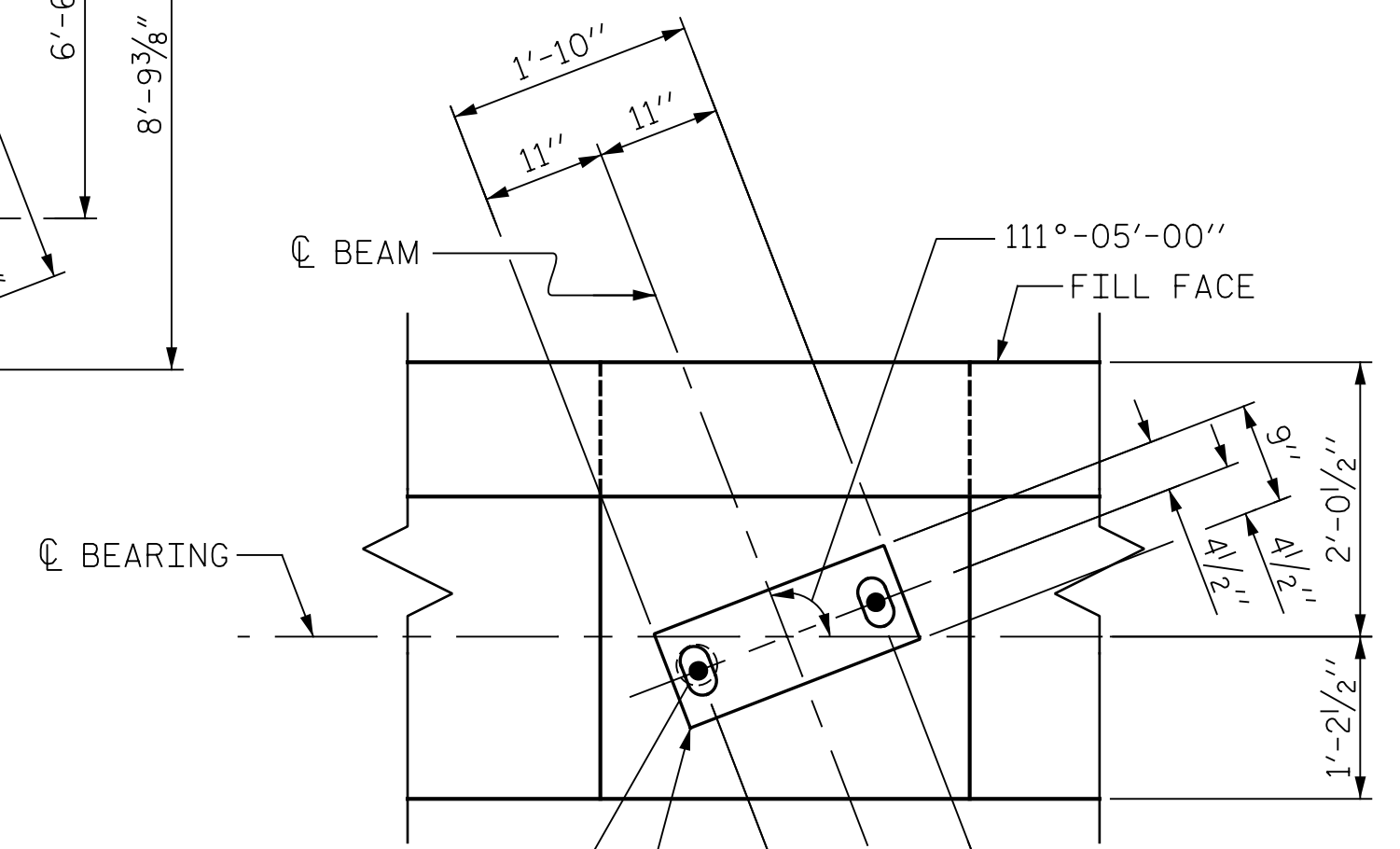
THE CONCRETE IN THE SHADED AREA OF THE WING SHALL BE POURED AFTER THE JOINT BETWEEN THE DECK AND THE APPROACH SLAB HAS BEEN SAWED AND THE BARRIER RAILS ARE CAST IF SLIP FORMING IS USED.

FIELD CUT HORIZONTAL AND VERTICAL REBAR IN THE BACKWALL TO MAINTAIN 2" CLEAR COVER WITH BLOCKOUT.

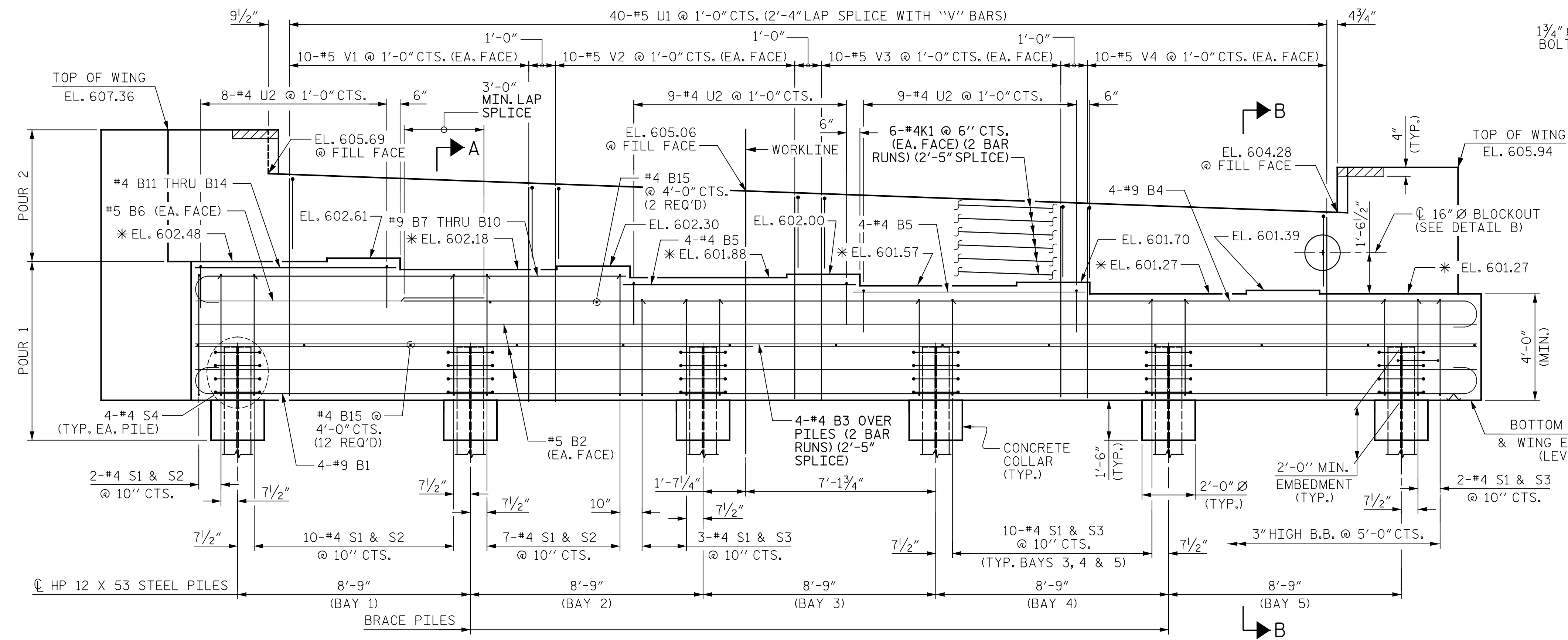
THE VOID FOR THE 16" Ø BLOCKOUT SHALL BE FILLED WITH CLASS A CONCRETE.



PLAN



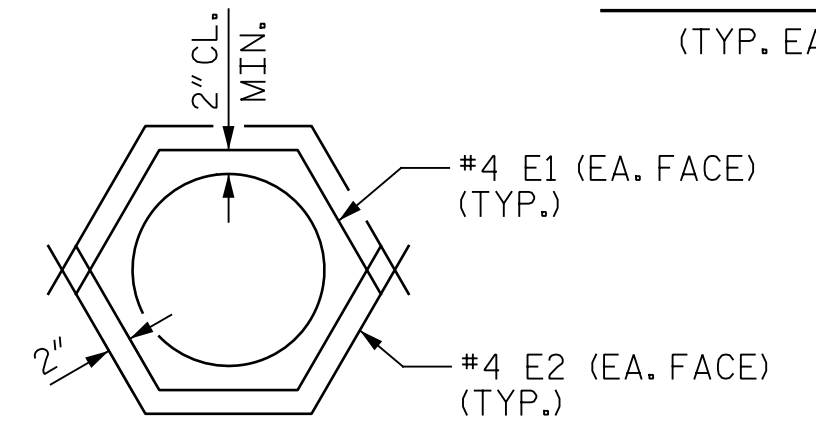
DETAIL A
(TYP. EA. BRG.)



ELEVATION

1 3/4" Ø X 2'-0 1/2" LONG ANCHOR BOLT TO PROJECT 6 1/2" ABOVE THE CAP (TYP.)

1'-10" X 9" X 2 7/16" TYPE II ELASTOMERIC BEARING PAD (5 REQ'D)



DETAIL B
16" Ø BLOCKOUT

PROJECT NO. B-4626
STANLY, ROWAN
AND DAVIDSON COUNTY
 STATION: 45+22.65 -EBL-

SHEET 1 OF 3

STATE OF NORTH CAROLINA
 DEPARTMENT OF TRANSPORTATION
 RALEIGH

SUBSTRUCTURE
 END BENT 2



DOCUMENT NOT CONSIDERED FINAL UNLESS ALL SIGNATURES COMPLETED

REVISIONS						SHEET NO.
NO.	BY:	DATE:	NO.	BY:	DATE:	S1-73
1			3			TOTAL SHEETS
2			4			125

DRAWN BY : J. MYA DATE : 04/2021
 CHECKED BY : J. YANACCONI DATE : 05/2021
 DESIGN ENGINEER OF RECORD: R. NELSON DATE : 05/2021

REINFORCING STEEL NOT SHOWN IN WINGS AND BRACE PILE CAP FOR CLARITY

PLANS PREPARED BY:
Gannett Fleming
 Excellence Delivered As Promised
 One Glenwood Avenue Suite 900 Raleigh, NC 27603 (919) 420-7660 NC Lic. No. F-0270