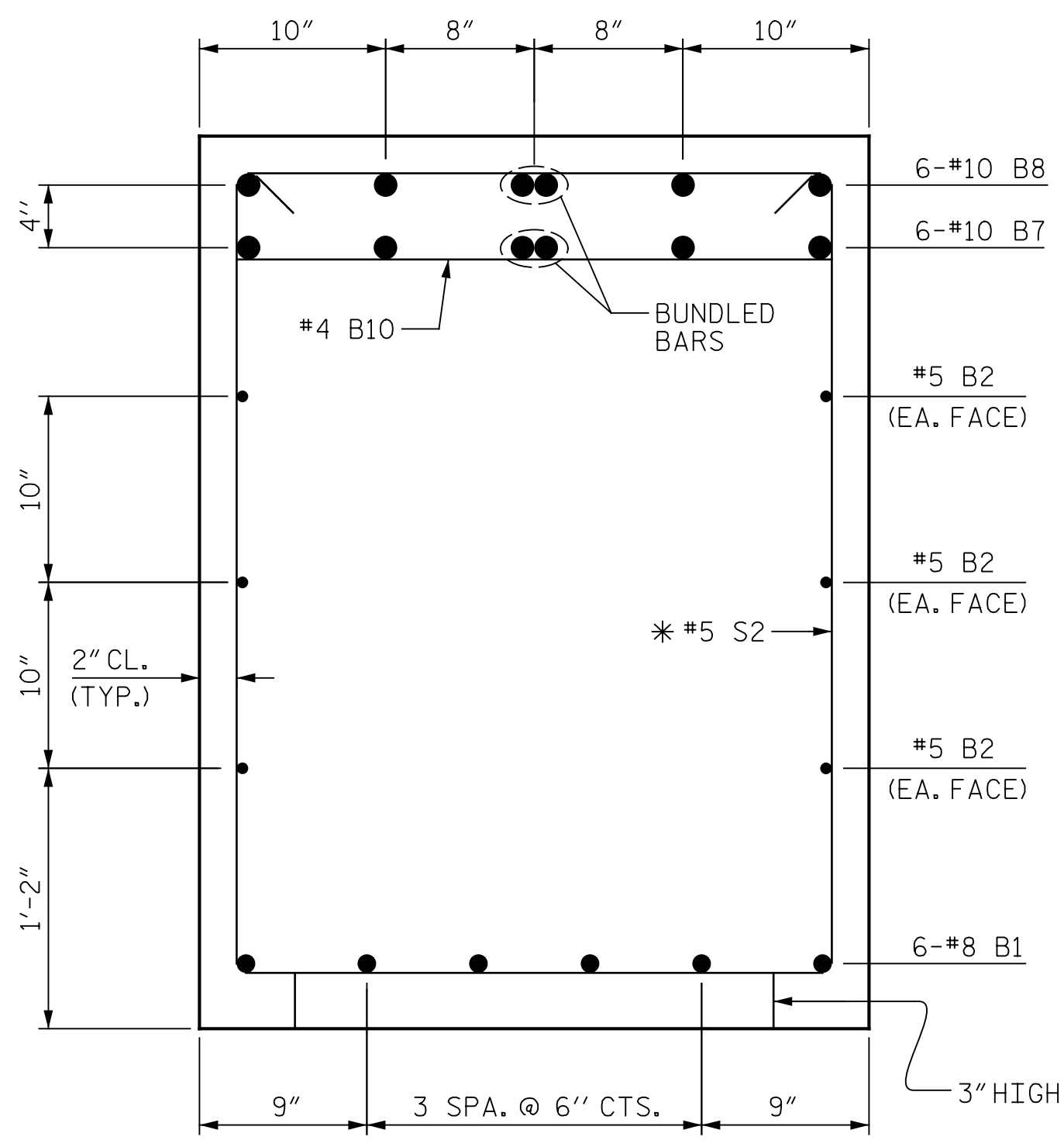
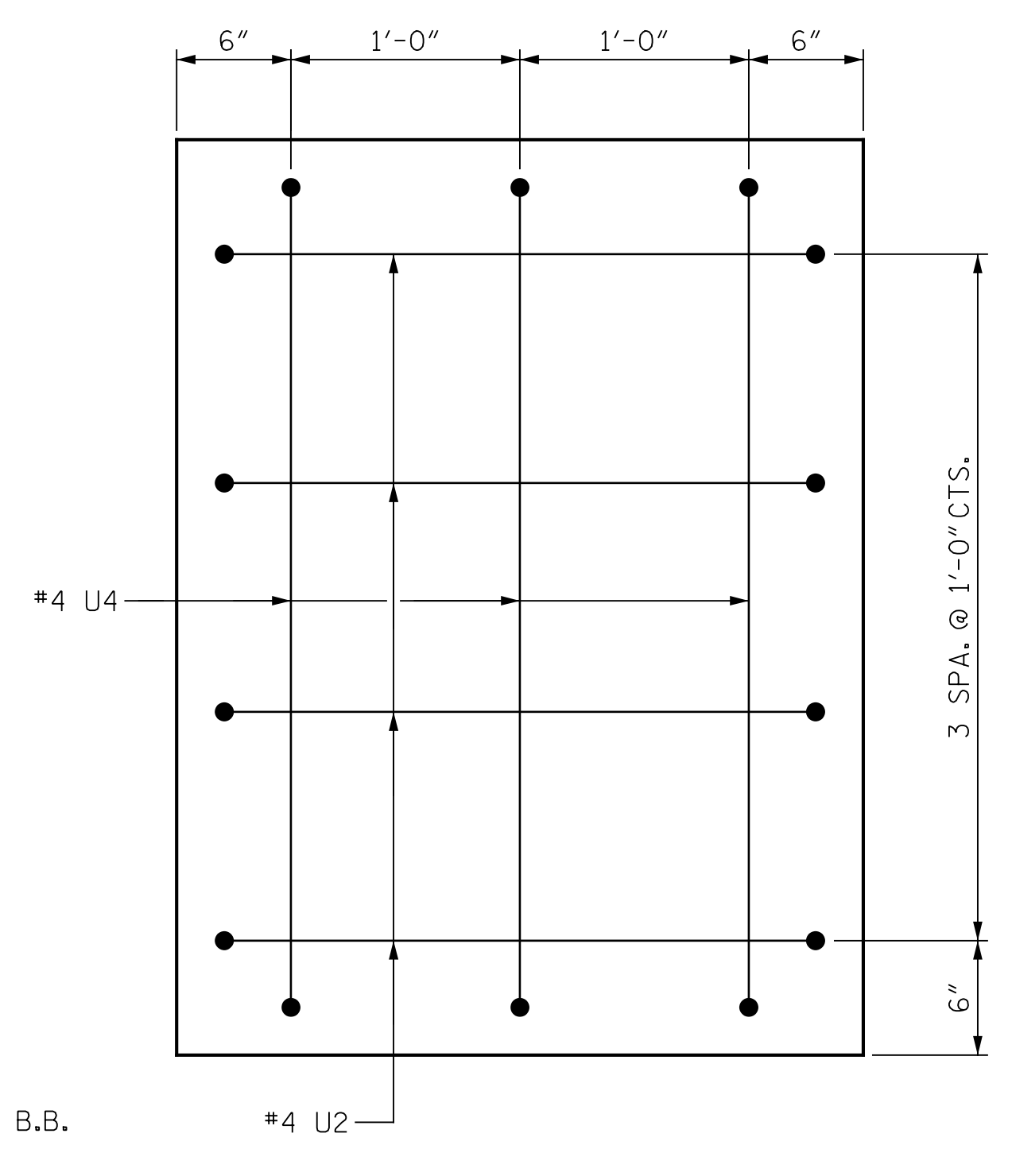


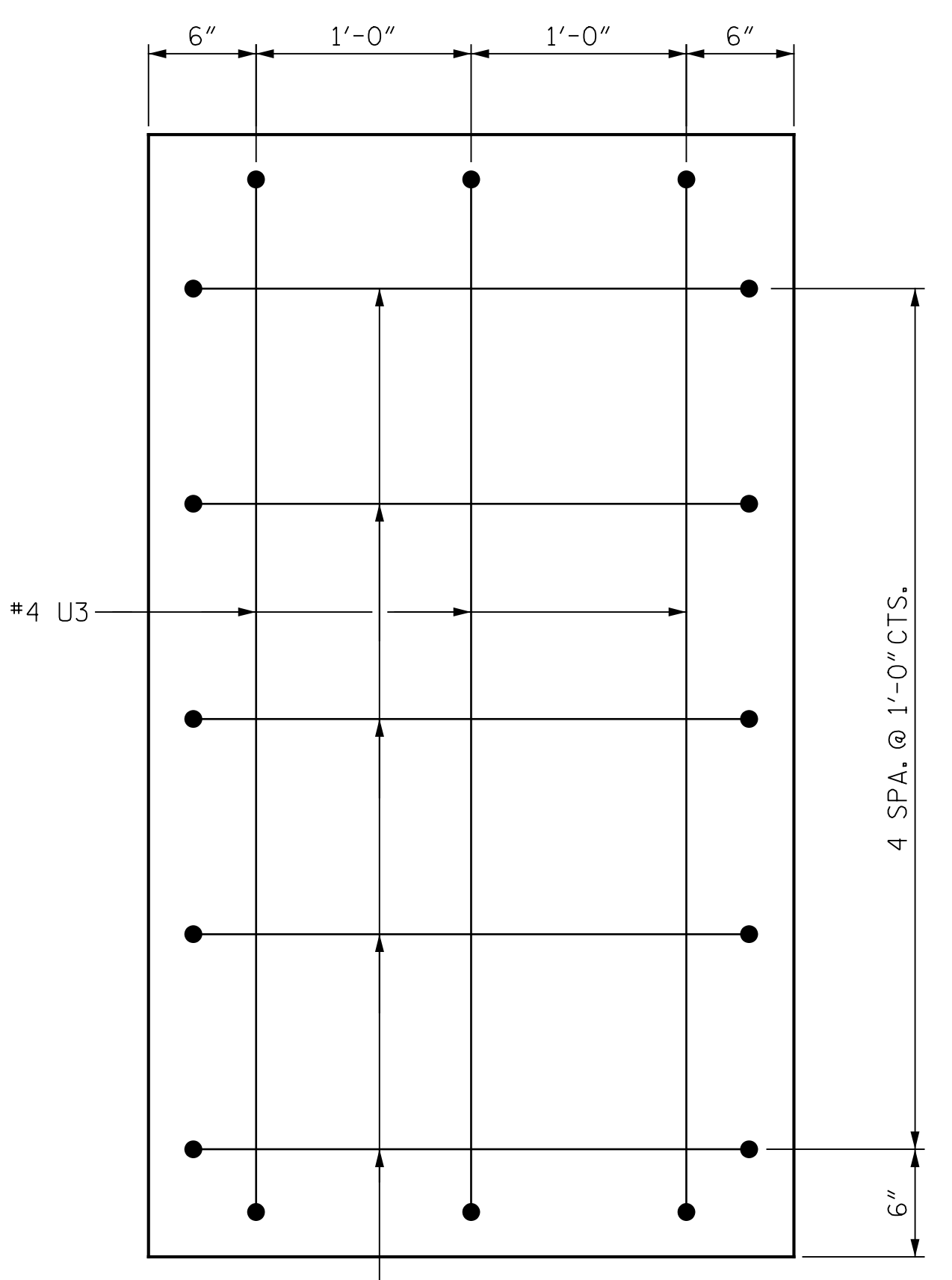
p:\gfn\p-w.bentley.com\gfn\p-w-01\Documents\Projects\63639\Task 010 B-4626\Discipline\Struct\Drawn\Rowan 3\Archives\Delete\401\_147\_B4626\_SMU\_B1202\_790003\_072 9/2/2021 4:05:05 PM pdf\_color\_gfclt\_FS.plt Rowan,pen,tbl



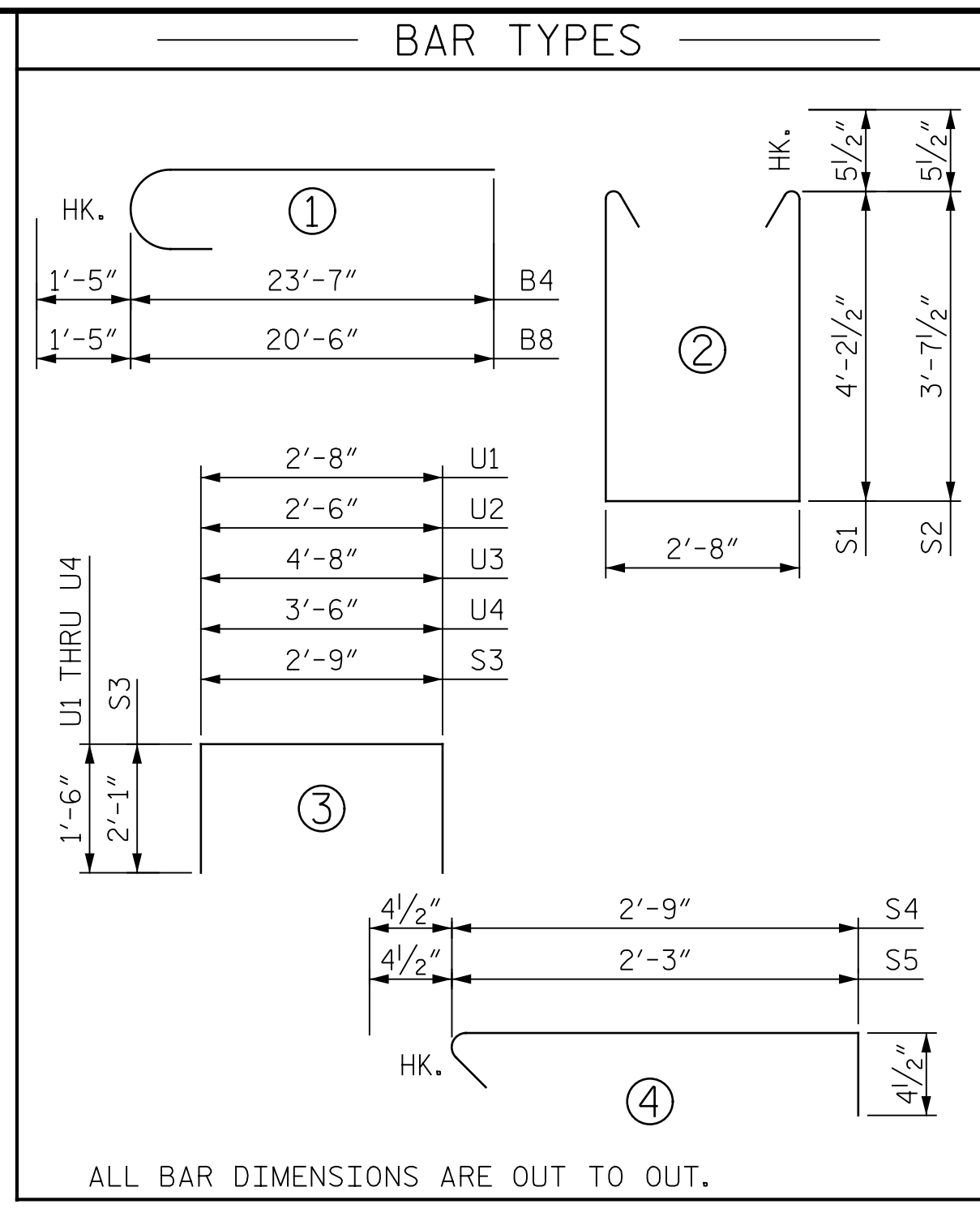
SECTION A-A



VIEW Y-Y

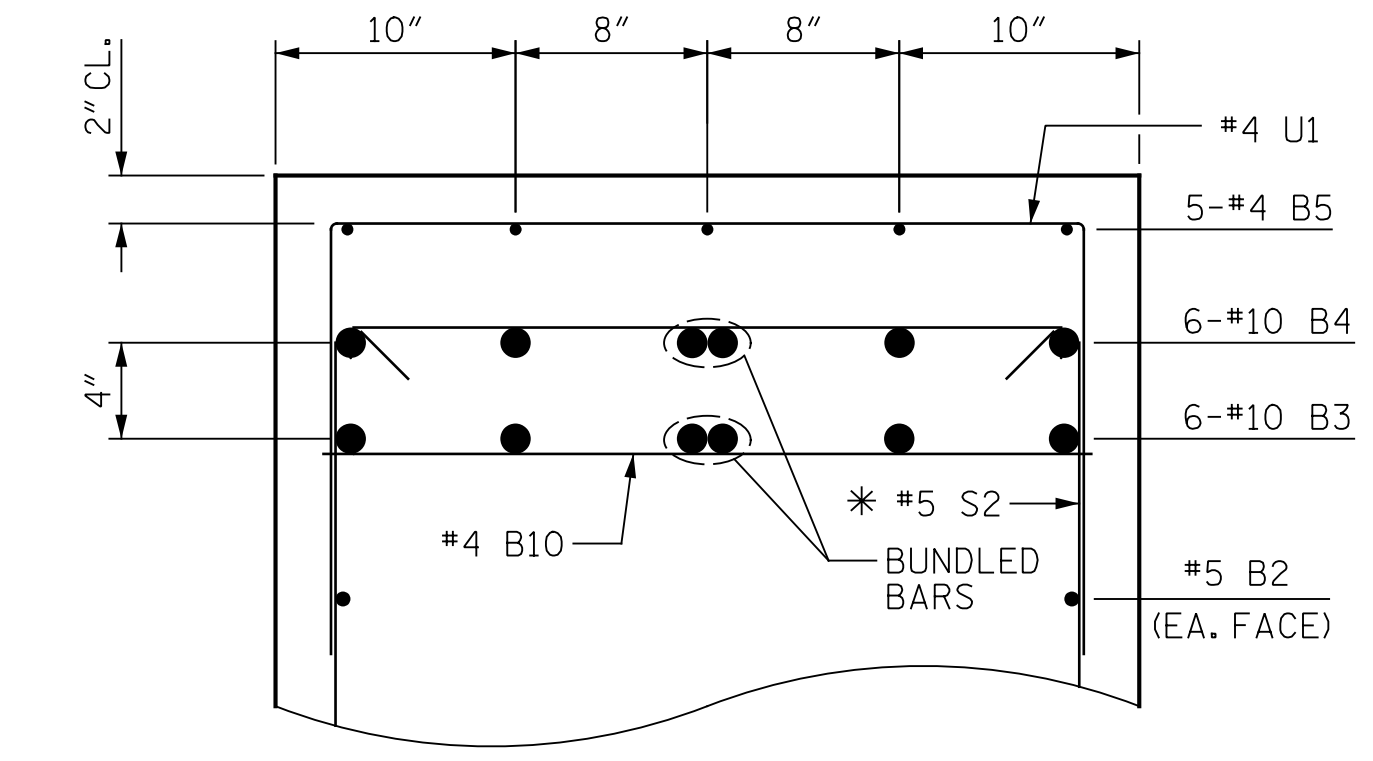


VIEW X-X

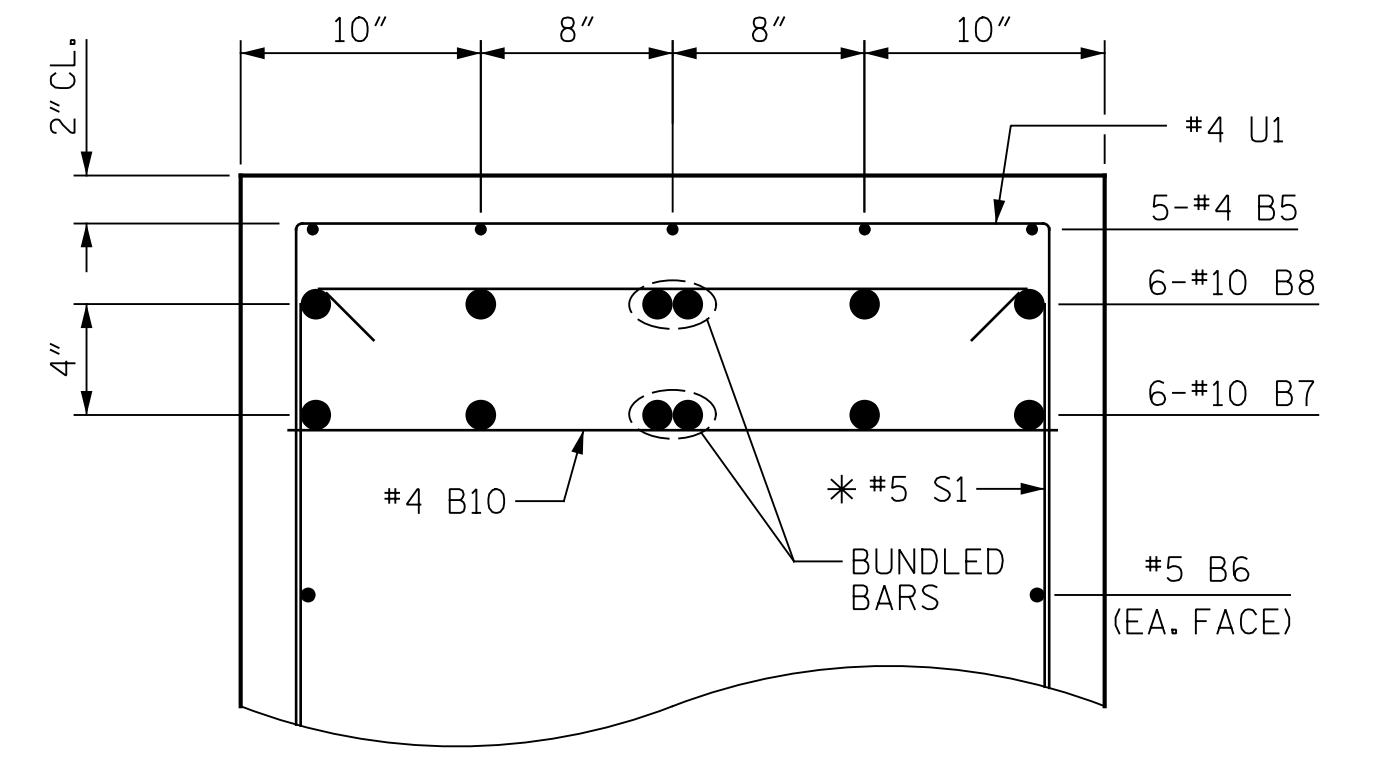


ALL BAR DIMENSIONS ARE OUT TO OUT.

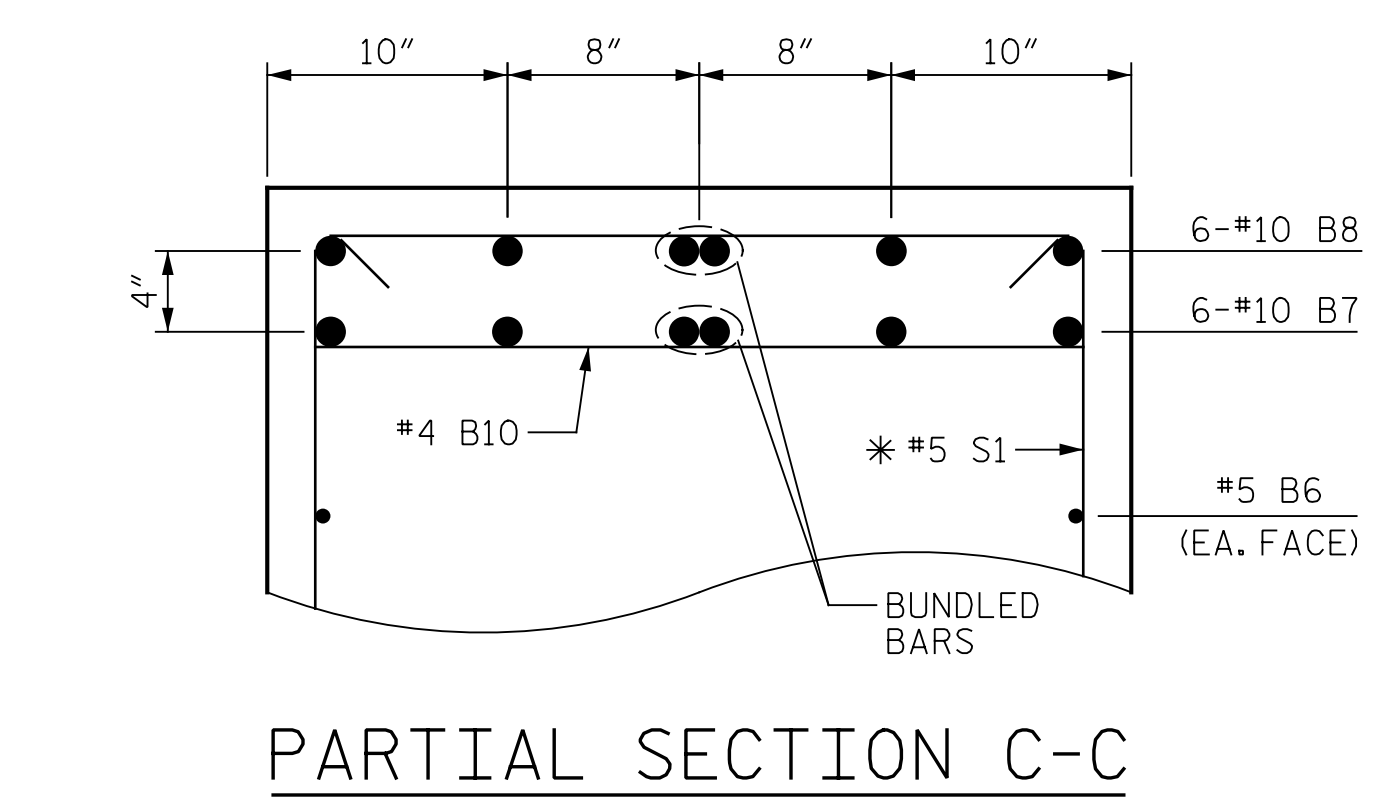
BILL OF MATERIAL					
BAR	NO.	SIZE	TYPE	LENGTH	WEIGHT
B1	6	#8	STR	38'-1"	610
B2	6	#5	STR	38'-1"	238
B3	6	#10	STR	23'-7"	609
B4	6	#10	1	25'-0"	645
B5	10	#4	STR	8'-8"	58
B6	2	#5	STR	17'-7"	37
B7	6	#10	STR	20'-6"	529
B8	6	#10	1	21'-11"	566
B9	5	#4	STR	3'-3"	11
B10	14	#4	STR	2'-8"	25
S1	26	#5	2	12'-0"	325
S2	24	#5	2	10'-10"	271
S3	8	#4	3	6'-11"	37
S4	4	#4	4	3'-6"	9
S5	4	#4	4	3'-0"	8
U1	43	#4	3	5'-8"	163
U2	9	#4	3	5'-6"	33
U3	3	#4	3	7'-8"	15
U4	3	#4	3	6'-6"	13
REINFORCING STEEL				LBS.	4,202
CLASS A CONCRETE					
POUR #1 - COLUMNS				CU. YDS.	1.1
POUR #2 - CAP				CU. YDS.	19.3
TOTAL				CU. YDS.	20.4



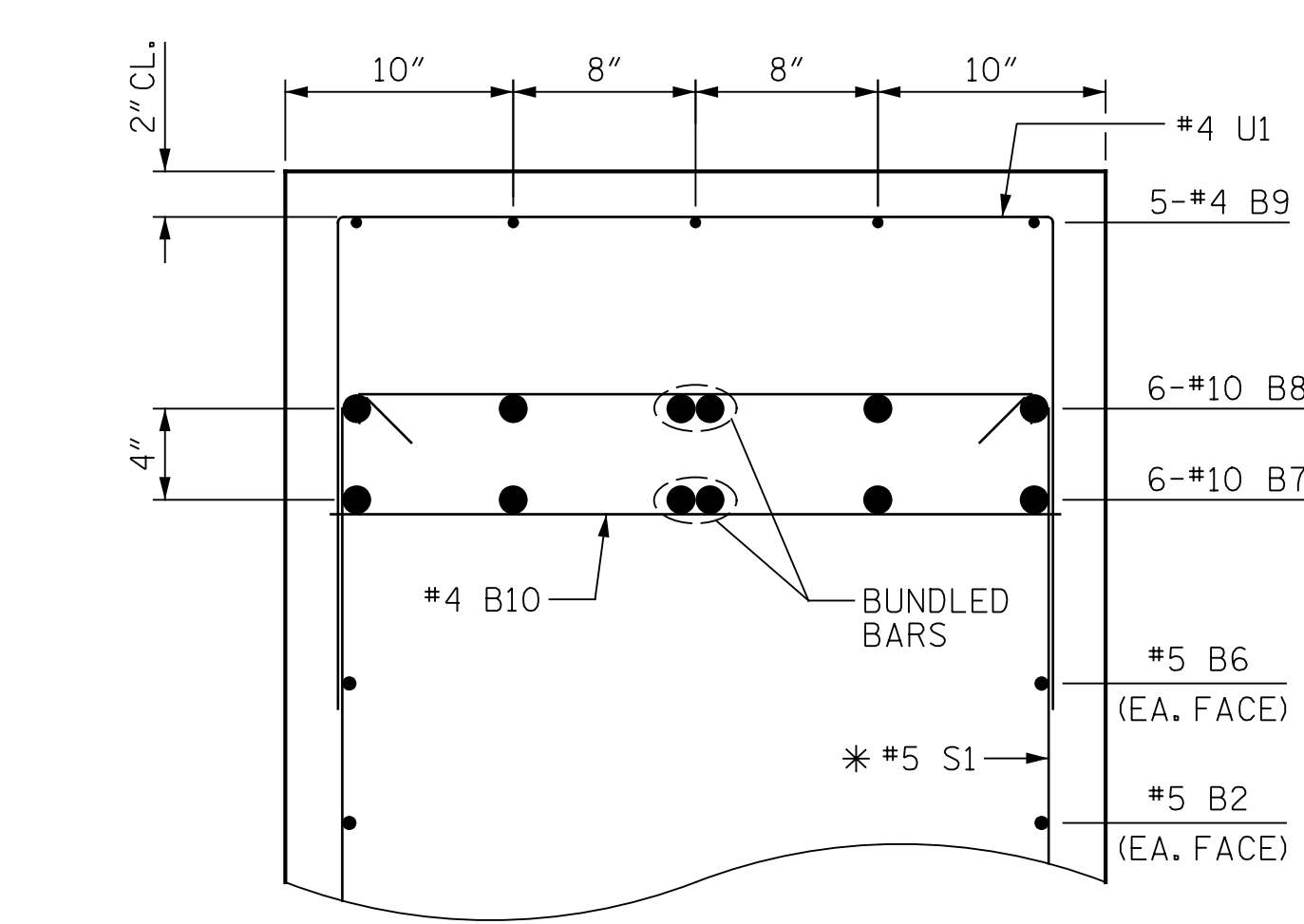
PARTIAL SECTION B-B



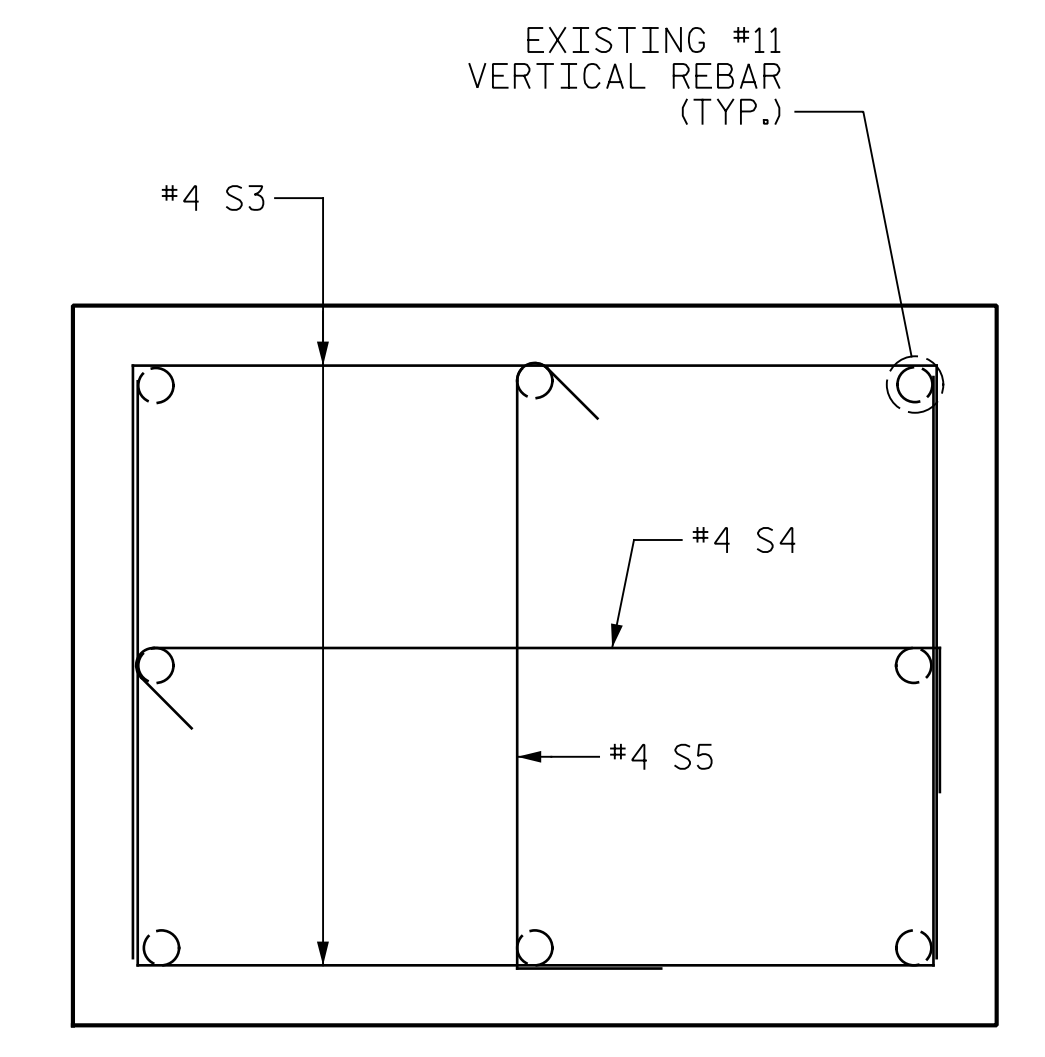
PARTIAL SECTION D-D



PARTIAL SECTION C-C



PARTIAL SECTION E-E



TYPICAL COLUMN SECTION

PROJECT NO. B-4626  
STANLY, ROWAN  
AND DAVIDSON COUNTY  
STATION: 45+22.65 -EBL-  
SHEET 2 OF 2

STATE OF NORTH CAROLINA DEPARTMENT OF TRANSPORTATION RALEIGH					
SUBSTRUCTURE BENT 12					
REVISIONS					
NO.	BY:	DATE:	NO.	BY:	DATE:
1			3		
2			4		



PLANS PREPARED BY:  
**Gannett Fleming**  
 Excellence Delivered As Promised  
 One Glenwood Avenue  
 Suite 900  
 Raleigh, NC 27603  
 (919) 420-7660  
 NC Lic. No. F-0270

DOCUMENT NOT CONSIDERED  
 FINAL UNLESS ALL  
 SIGNATURES COMPLETED

DRAWN BY: J. MYA DATE: 04/2021  
 CHECKED BY: J. YANACCONI DATE: 05/2021  
 DESIGN ENGINEER OF RECORD: R. NELSON DATE: 05/2021

SHEET NO.  
S1-72  
 TOTAL SHEETS  
125