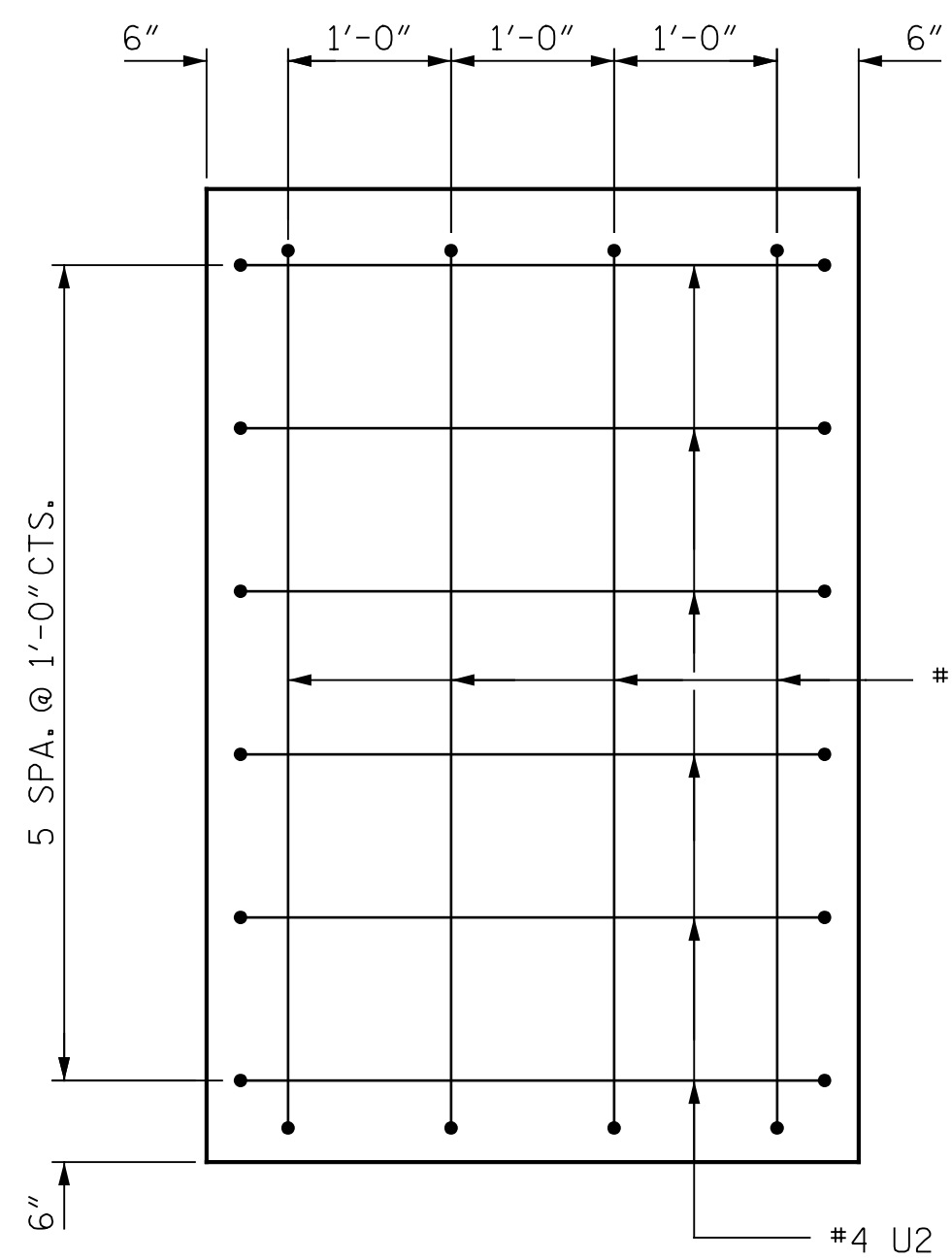
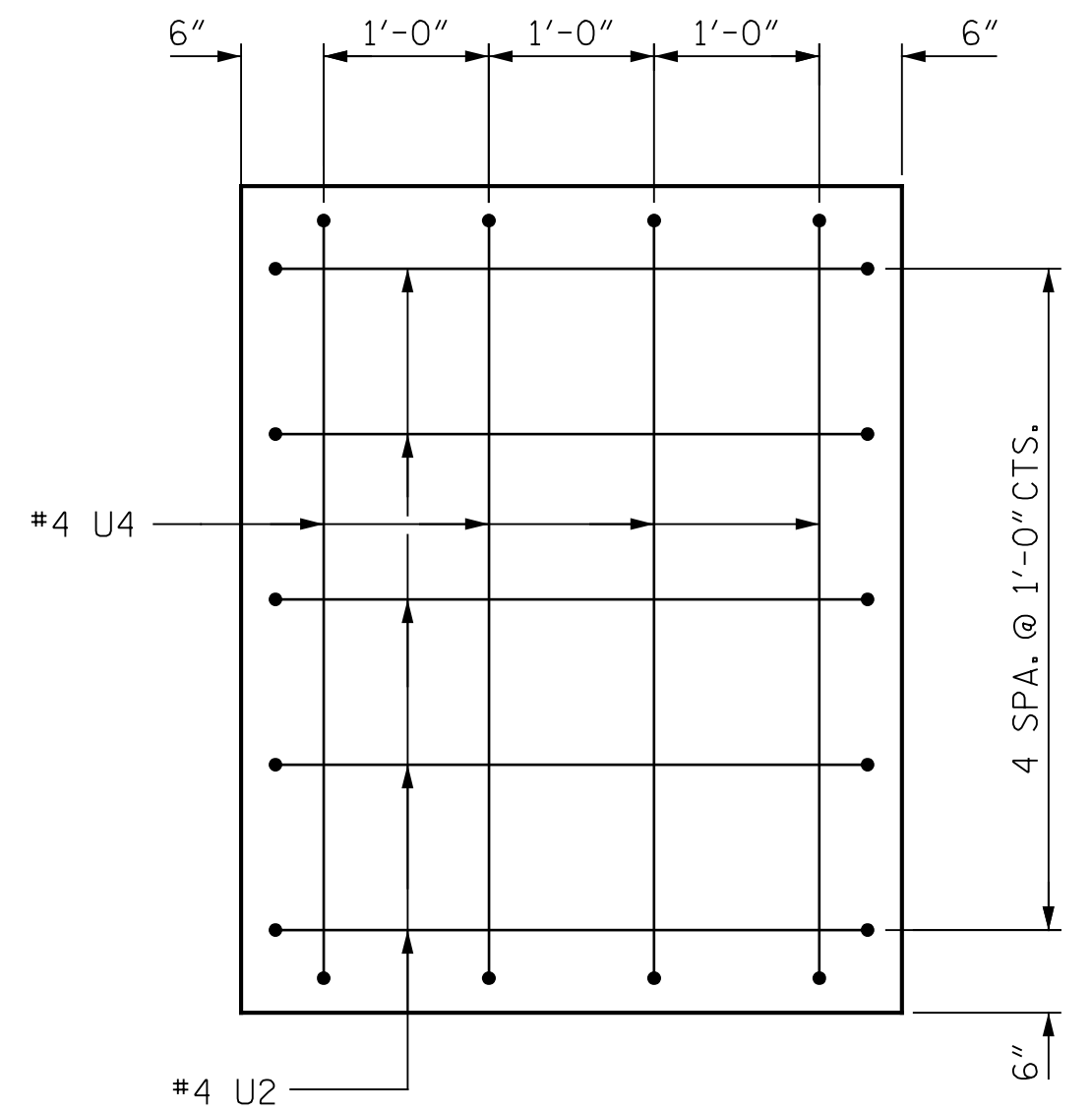


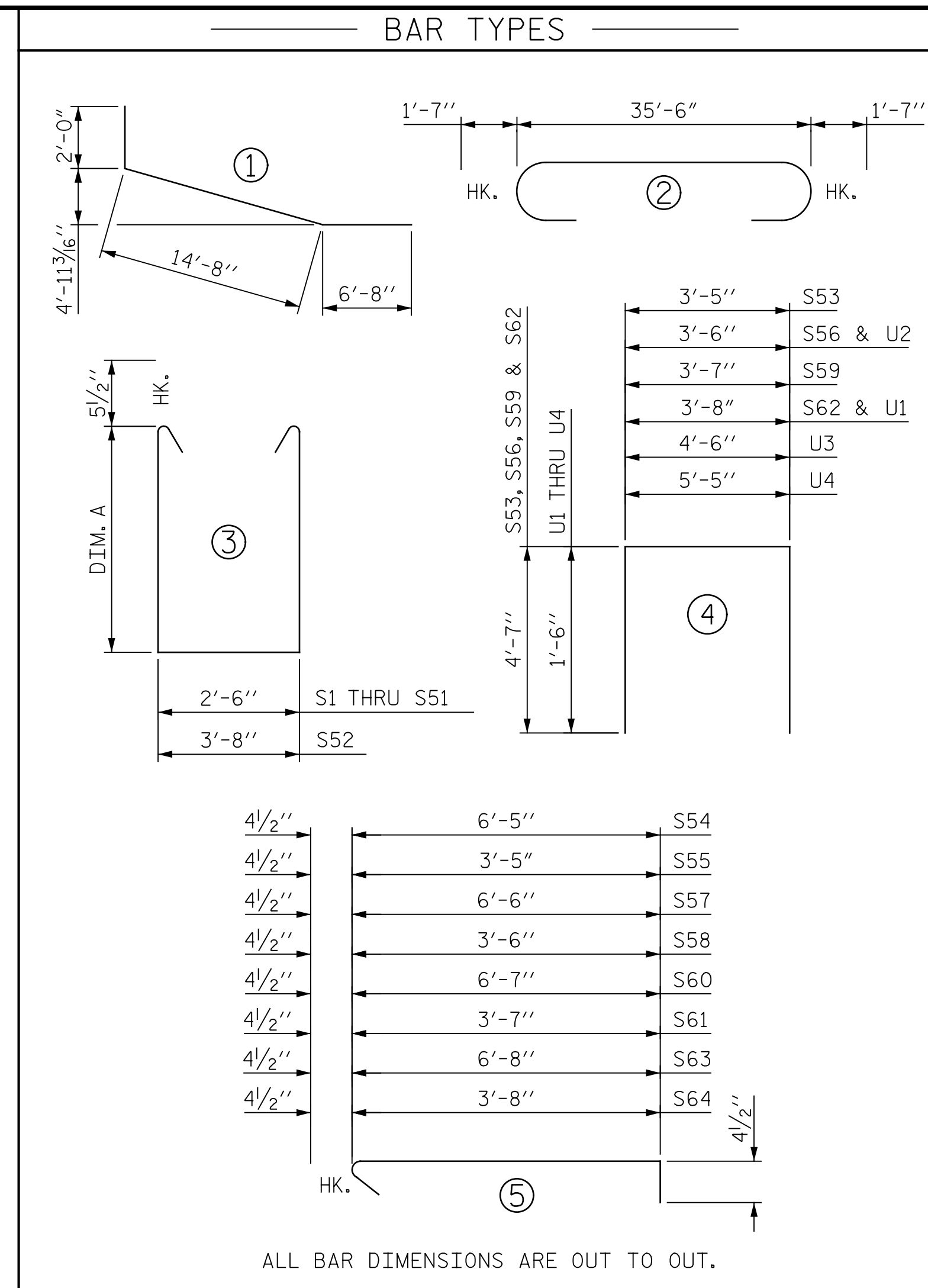
p:\gfn\p-w\ben\p-w-01\Documents\Projects\63639\Task 010 B-4626\Discipline\Struct\Drawn\401_137_B4626_SMU_B603_790003_067
 9/2/2021 4:04:29 PM pdf_color_gfclt_FS.plt Rowan,pen,tbl



VIEW X-X

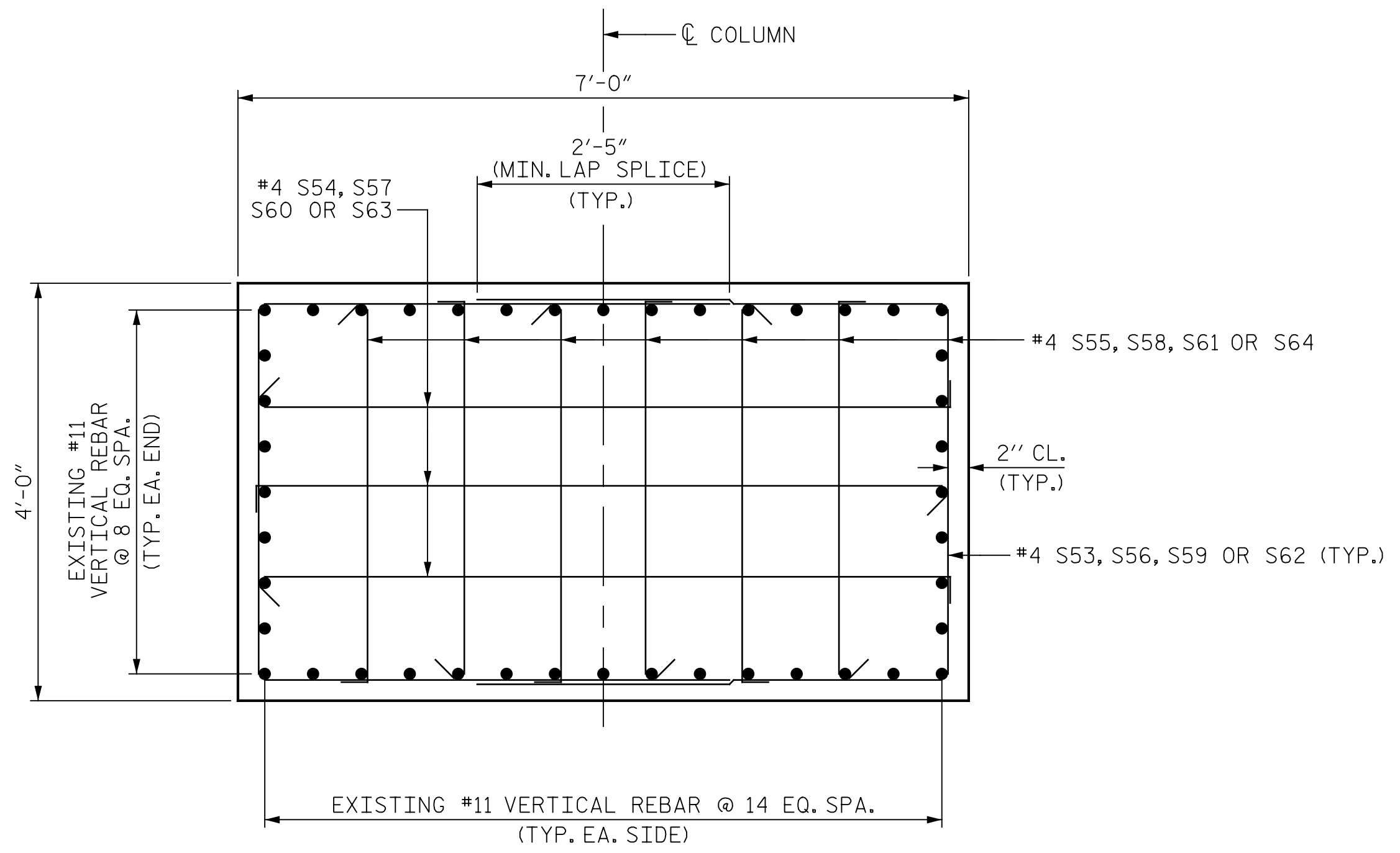


VIEW Y-Y



ALL BAR DIMENSIONS ARE OUT TO OUT.

BILL OF MATERIAL (FOR ONE BENT)													
BAR	NO.	SIZE	TYPE	DIM. A	LENGTH	WEIGHT	BAR	NO.	SIZE	TYPE	DIM. A	LENGTH	WEIGHT
B1	12	#9	1	-	23'-4"	952	S29	2	#5	3	9'-2 1/2"	21'-10"	46
B2	2	#8	STR	-	12'-7"	67	S30	2	#5	3	9'-0 1/2"	21'-6"	45
B3	2	#8	STR	-	16'-9"	89	S31	2	#5	3	8'-11"	21'-3"	44
B4	2	#8	STR	-	21'-0"	112	S32	2	#5	3	8'-9"	20'-11"	44
B5	2	#8	STR	-	25'-2"	134	S33	2	#5	3	8'-6 1/2"	20'-6"	43
B6	2	#8	STR	-	29'-4"	157	S34	2	#5	3	8'-4"	20'-1"	42
B7	2	#8	STR	-	33'-7"	179	S35	2	#5	3	8'-1 1/2"	19'-8"	41
B8	10	#8	STR	-	35'-8"	952	S36	2	#5	3	7'-11"	19'-3"	40
B9	12	#11	STR	-	35'-8"	2274	S37	2	#5	3	7'-8 1/2"	18'-10"	39
B10	8	#11	2	-	38'-8"	1643	S38	2	#5	3	7'-6"	18'-5"	38
B11	6	#4	STR	-	10'-9"	43	S39	2	#5	3	7'-3 1/2"	18'-0"	38
B12	8	#11	STR	-	13'-8"	581	S40	2	#5	3	7'-1"	17'-7"	37
B13	6	#4	STR	-	2'-11"	12	S41	2	#5	3	6'-10 1/2"	17'-2"	36
B14	22	#4	STR	-	3'-8"	54	S42	2	#5	3	6'-8"	16'-9"	35
							S43	2	#5	3	6'-5 1/2"	16'-4"	34
S1	2	#5	3	5'-5 1/2"	14'-4"	30	S44	2	#5	3	6'-3"	15'-11"	33
S2	2	#5	3	5'-8"	14'-9"	31	S45	2	#5	3	6'-0 1/2"	15'-6"	32
S3	2	#5	3	5'-10 1/2"	15'-2"	32	S46	2	#5	3	5'-10"	15'-1"	31
S4	2	#5	3	6'-1"	15'-7"	33	S47	2	#5	3	5'-7 1/2"	14'-8"	31
S5	2	#5	3	6'-3 1/2"	16'-0"	33	S48	2	#5	3	5'-5"	14'-3"	30
S6	2	#5	3	6'-6"	16'-5"	34	S49	2	#5	3	5'-2 1/2"	13'-10"	29
S7	2	#5	3	6'-8 1/2"	16'-10"	35	S50	2	#5	3	5'-0"	13'-5"	28
S8	2	#5	3	6'-11"	17'-3"	36	S51	2	#5	3	4'-9 1/2"	13'-0"	27
S9	2	#5	3	7'-1 1/2"	17'-8"	37	S52	6	#5	3	9'-7 1/2"	23'-10"	149
S10	2	#5	3	7'-4"	18'-1"	38	S53	6	#4	4	-	12'-7"	50
S11	2	#5	3	7'-6 1/2"	18'-6"	39	S54	9	#4	5	-	7'-2"	43
S12	2	#5	3	7'-9"	18'-11"	39	S55	18	#4	5	-	4'-2"	50
S13	2	#5	3	7'-11 1/2"	19'-4"	40	S56	8	#4	4	-	12'-8"	68
S14	2	#5	3	8'-2"	19'-9"	41	S57	12	#4	5	-	7'-3"	58
S15	2	#5	3	8'-4 1/2"	20'-2"	42	S58	24	#4	5	-	4'-3"	68
S16	2	#5	3	8'-7"	20'-7"	43	S59	8	#4	4	-	12'-9"	68
S17	2	#5	3	8'-9 1/2"	21'-0"	44	S60	12	#4	5	-	7'-4"	59
S18	2	#5	3	9'-0"	21'-5"	45	S61	24	#4	5	-	4'-4"	69
S19	2	#5	3	9'-2 1/2"	21'-10"	46	S62	10	#4	4	-	12'-10"	86
S20	2	#5	3	9'-5"	22'-3"	46	S63	15	#4	5	-	7'-5"	74
S21	2	#5	3	9'-6 1/2"	22'-6"	47	S64	30	#4	5	-	4'-5"	89
S22	2	#5	3	9'-8 1/2"	22'-10"	48							
S23	2	#5	3	9'-10"	23'-1"	48	U1	29	#4	4	-	6'-8"	129
S24	2	#5	3	10'-0"	23'-5"	49	U2	11	#4	4	-	6'-6"	48
S25	2	#5	3	10'-1 1/2"	23'-8"	49	U3	4	#4	4	-	7'-6"	20
S26	8	#5	3	9'-7 1/2"	22'-8"	189	U4	4	#4	4	-	8'-5"	22
S27	2	#5	3	9'-6"	22'-5"	47							
S28	2	#5	3	9'-4"	22'-1"	46							



SECTION E-E

REINFORCING STEEL	LBS.	11,435
MECHANICAL BUTT SPLICES	EA.	22
CLASS A CONCRETE		
CAP & COLUMN	53.7	CU. YDS.
TOTAL	53.7	CU. YDS.

PROJECT NO. B-4626
STANLY, ROWAN
AND DAVIDSON COUNTY
 STATION: 45+22.65 -EBL-

SHEET 3 OF 3

STATE OF NORTH CAROLINA
 DEPARTMENT OF TRANSPORTATION
 RALEIGH

SUBSTRUCTURE
 BENT 6 AND 7



DRAWN BY: J. MYA DATE: 04/2021
 CHECKED BY: J. YANACCONI DATE: 05/2021
 DESIGN ENGINEER OF RECORD: R. NELSON DATE: 05/2021

PLANS PREPARED BY:
Gannett Fleming
 Excellence Delivered As Promised

One Glenwood Avenue
 Suite 900
 Raleigh, NC 27603
 (919) 420-7660
 NC Lic. No. F-0270

REVISIONS						SHEET NO.
NO.	BY:	DATE:	NO.	BY:	DATE:	S1-67
1			3			TOTAL SHEETS
2			4			125

DOCUMENT NOT CONSIDERED FINAL UNLESS ALL SIGNATURES COMPLETED