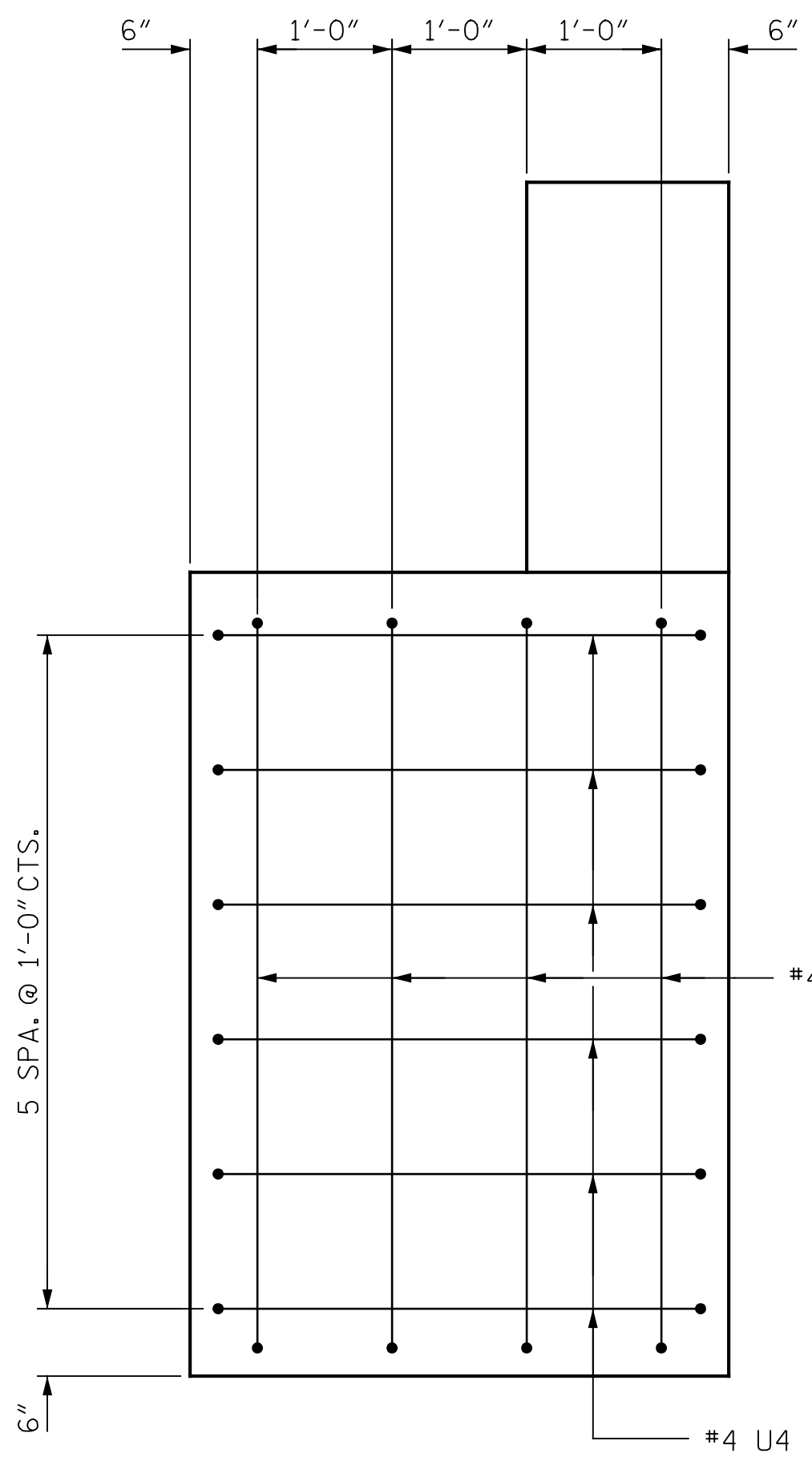
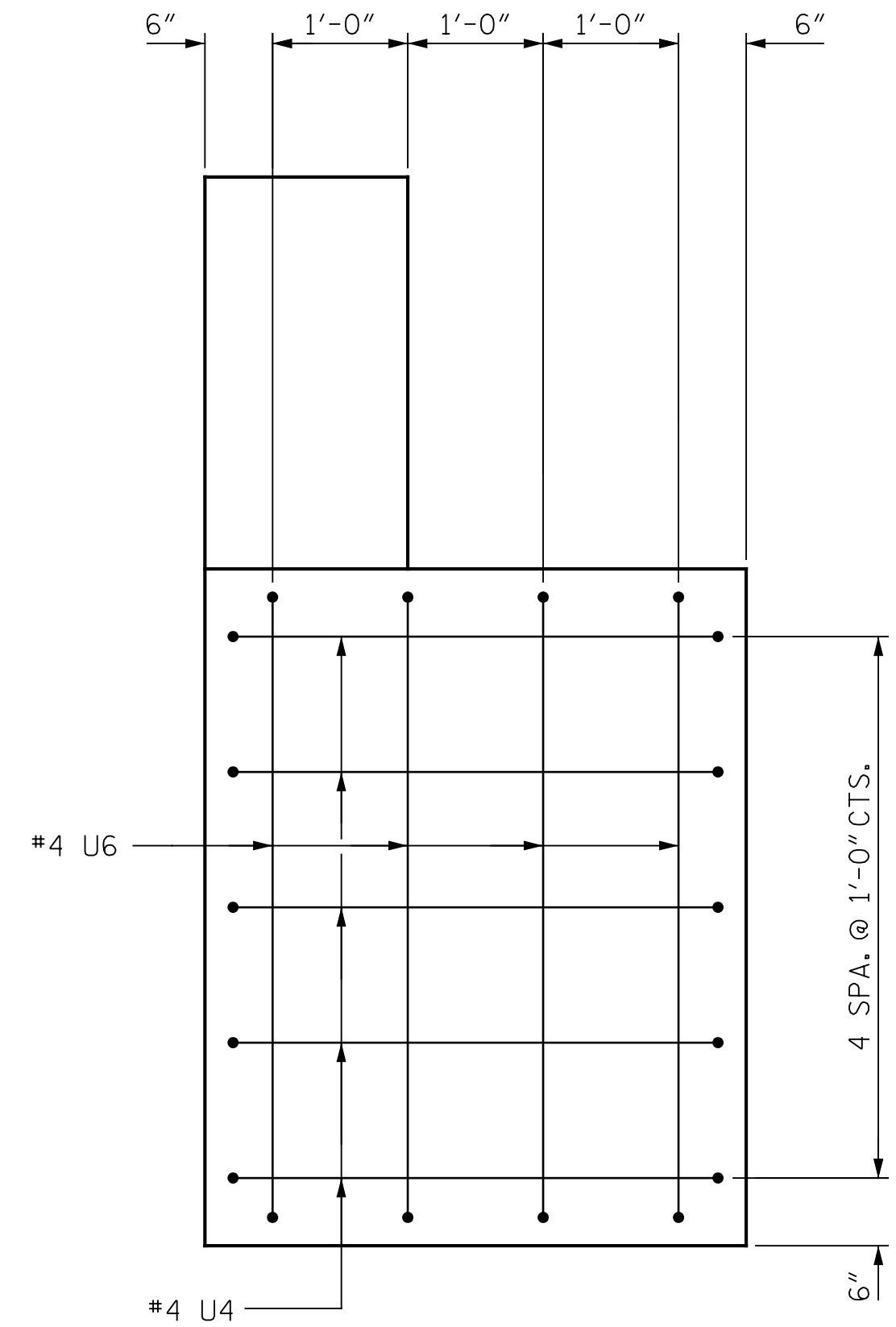


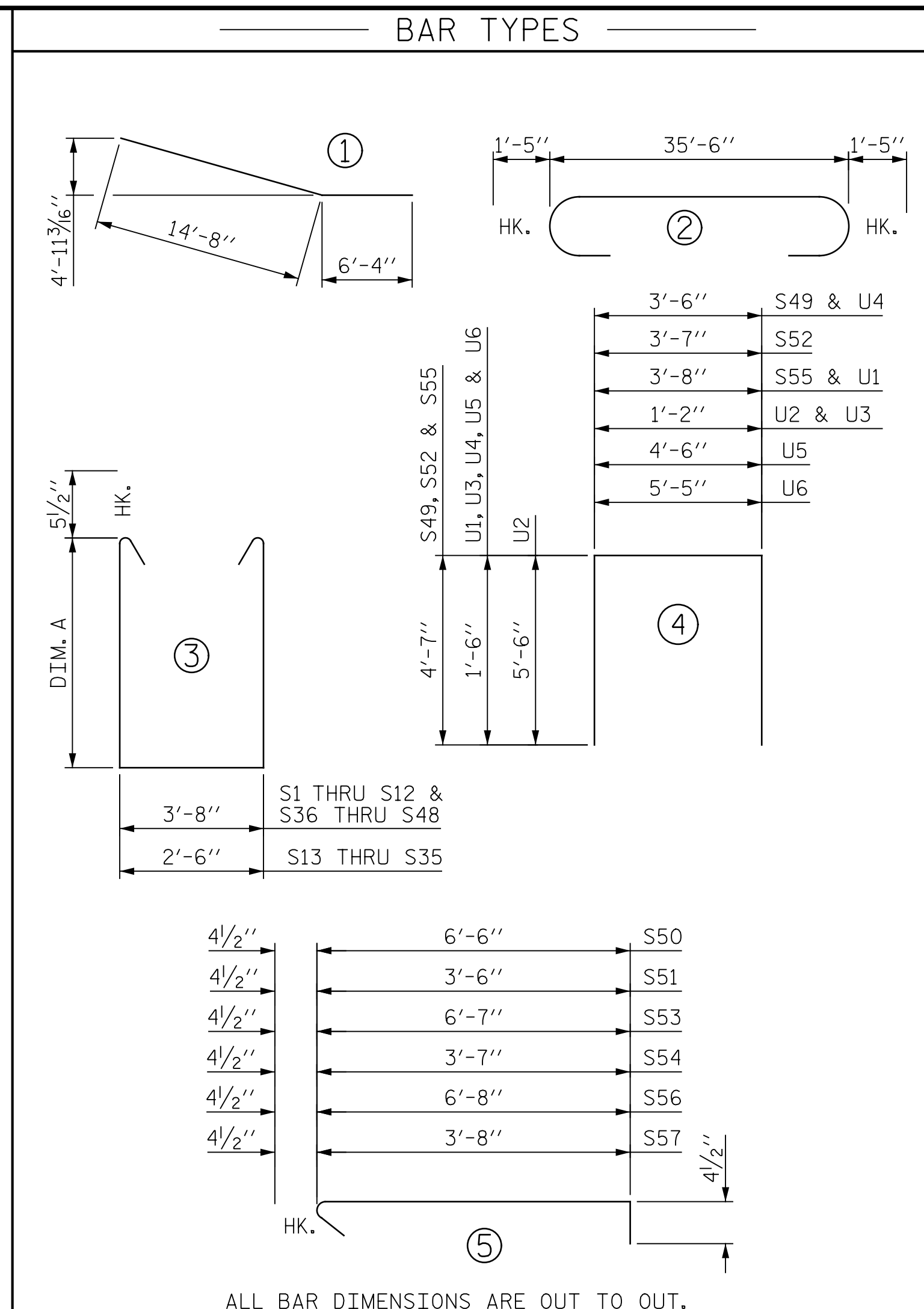
p:\gfn\p-w\ben\h\com\gfn\p-w\01\Documents\Projects\63639\Task 010 B-4626\Discipline\Struct\DN\Rowan 3\Archives\Delete\401\_131\_B4626-SMU\_B503-790003\_064 9/2/2021 4:04:08 PM pdf\_color\_gfclt\_FS.plt Rowan.pen.tbl



VIEW X-X

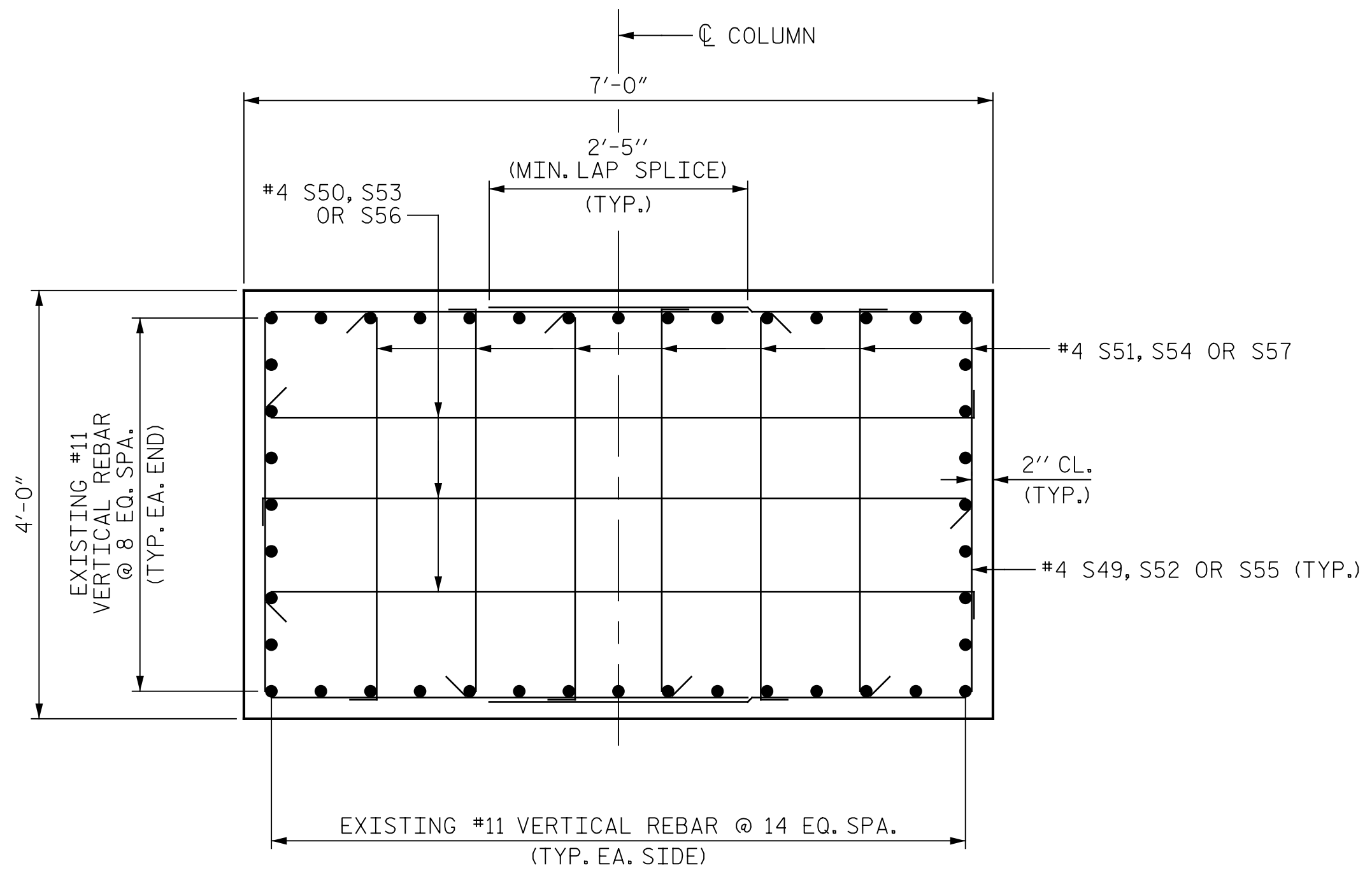


VIEW Y-Y



ALL BAR DIMENSIONS ARE OUT TO OUT.

BAR TYPES										BILL OF MATERIAL					
BAR	NO.	SIZE	TYPE	DIM. A	LENGTH	WEIGHT	BAR	NO.	SIZE	TYPE	DIM. A	LENGTH	WEIGHT		
B1	12	#8	1	-	21'-0"	673	S24	8	#5	3	9'-7 1/2"	22'-8"	189		
B2	2	#8	STR	-	12'-7"	67	S25	2	#5	3	9'-5"	22'-3"	46		
B3	2	#8	STR	-	16'-9"	89	S26	2	#5	3	9'-3"	21'-11"	46		
B4	2	#8	STR	-	21'-0"	112	S27	2	#5	3	9'-1"	21'-7"	45		
B5	2	#8	STR	-	25'-2"	134	S28	2	#5	3	8'-11"	21'-3"	44		
B6	2	#8	STR	-	29'-4"	157	S29	2	#5	3	8'-8 1/2"	20'-10"	43		
B7	2	#8	STR	-	33'-7"	179	S30	2	#5	3	8'-6 1/2"	20'-6"	43		
B8	10	#8	STR	-	35'-8"	952	S31	2	#5	3	8'-4 1/2"	20'-2"	42		
B9	7	#10	STR	-	35'-8"	1074	S32	2	#5	3	8'-2"	19'-9"	41		
B10	8	#10	2	-	38'-4"	1320	S33	2	#5	3	8'-0"	19'-5"	41		
B11	7	#4	STR	-	10'-9"	50	S34	2	#5	3	7'-10"	19'-1"	40		
B12	8	#10	STR	-	13'-8"	470	S35	2	#5	3	7'-8"	18'-9"	39		
B13	7	#4	STR	-	2'-11"	14	S36	1	#5	3	7'-5"	19'-5"	20		
B14	2	#4	STR	-	10'-10"	14	S37	1	#5	3	7'-2"	18'-11"	20		
B15	2	#4	STR	-	21'-7"	29	S38	1	#5	3	6'-11"	18'-5"	19		
B16	8	#4	STR	-	35'-8"	191	S39	1	#5	3	6'-8 1/2"	18'-0"	19		
B17	6	#4	STR	-	8'-1"	32	S40	1	#5	3	6'-5 1/2"	17'-6"	18		
B18	2	#4	STR	-	2'-11"	4	S41	1	#5	3	6'-2 1/2"	17'-0"	18		
B19	13	#4	STR	-	3'-8"	32	S42	1	#5	3	6'-0"	16'-7"	17		
S1	1	#5	3	5'-5"	15'-5"	16	S43	1	#5	3	5'-9"	16'-1"	17		
S2	1	#5	3	5'-8"	15'-11"	17	S44	1	#5	3	5'-6"	15'-7"	16		
S3	1	#5	3	5'-11"	16'-5"	17	S45	1	#5	3	5'-3"	15'-1"	16		
S4	1	#5	3	6'-2"	16'-11"	18	S46	1	#5	3	5'-0 1/2"	14'-8"	15		
S5	1	#5	3	6'-4 1/2"	17'-4"	18	S47	1	#5	3	4'-9 1/2"	14'-2"	15		
S6	1	#5	3	6'-7 1/2"	17'-10"	19	S48	6	#5	3	9'-7 1/2"	23'-10"	149		
S7	1	#5	3	6'-10 1/2"	18'-4"	19	S49	4	#4	4	-	12'-8"	34		
S8	1	#5	3	7'-1"	18'-9"	20	S50	6	#4	5	-	7'-3"	29		
S9	1	#5	3	7'-4"	19'-3"	20	S51	12	#4	5	-	4'-3"	34		
S10	1	#5	3	7'-7"	19'-9"	21	S52	8	#4	4	-	12'-9"	68		
S11	1	#5	3	7'-10"	20'-3"	21	S53	12	#4	5	-	7'-4"	59		
S12	1	#5	3	8'-0 1/2"	20'-8"	22	S54	24	#4	5	-	4'-4"	69		
S13	2	#5	3	8'-3 1/2"	20'-0"	42	S55	8	#4	4	-	12'-10"	69		
S14	2	#5	3	8'-5 1/2"	20'-4"	42	S56	12	#4	5	-	7'-5"	59		
S15	2	#5	3	8'-8"	20'-9"	43	S57	24	#4	5	-	4'-5"	71		
S16	2	#5	3	8'-10"	21'-1"	44	U1	29	#4	4	-	6'-8"	129		
S17	2	#5	3	9'-0"	21'-5"	45	U2	36	#5	4	-	12'-2"	457		
S18	2	#5	3	9'-2"	21'-9"	45	U3	30	#4	4	-	4'-2"	84		
S19	2	#5	3	9'-4 1/2"	22'-2"	46	U4	11	#4	4	-	6'-6"	48		
S20	2	#5	3	9'-6 1/2"	22'-6"	47	U5	4	#4	4	-	7'-6"	20		
S21	2	#5	3	9'-8 1/2"	22'-10"	48	U6	4	#4	4	-	8'-5"	22		
S22	2	#5	3	9'-11"	23'-3"	48									
S23	2	#5	3	10'-1"	23'-7"	49									



SECTION E-E

REINFORCING STEEL	LBS.	8,590
CLASS A CONCRETE		
POUR #1 - CAP & COLUMN	50.1	CU. YDS.
POUR #2 - CAP STEP	5.8	CU. YDS.
TOTAL	55.9	CU. YDS.

PROJECT NO. B-4626  
STANLY, ROWAN  
AND DAVIDSON COUNTY  
STATION: 45+22.65 -EBL-

SHEET 3 OF 3

STATE OF NORTH CAROLINA  
DEPARTMENT OF TRANSPORTATION  
RALEIGH

SUBSTRUCTURE  
BENT 5



DRAWN BY : J. MYA DATE : 04/2021  
CHECKED BY : J. YANACCONI DATE : 05/2021  
DESIGN ENGINEER OF RECORD: R. NELSON DATE : 05/2021

PLANS PREPARED BY:  
**Gannett Fleming**  
Excellence Delivered As Promised

One Glenwood Avenue  
Suite 900  
Raleigh, NC 27603  
(919) 420-7660  
NC Lic. No. F-0270

DOCUMENT NOT CONSIDERED  
FINAL UNLESS ALL  
SIGNATURES COMPLETED

REVISIONS						SHEET NO.
NO.	BY:	DATE:	NO.	BY:	DATE:	S1-64
1			3			TOTAL SHEETS
2			4			125