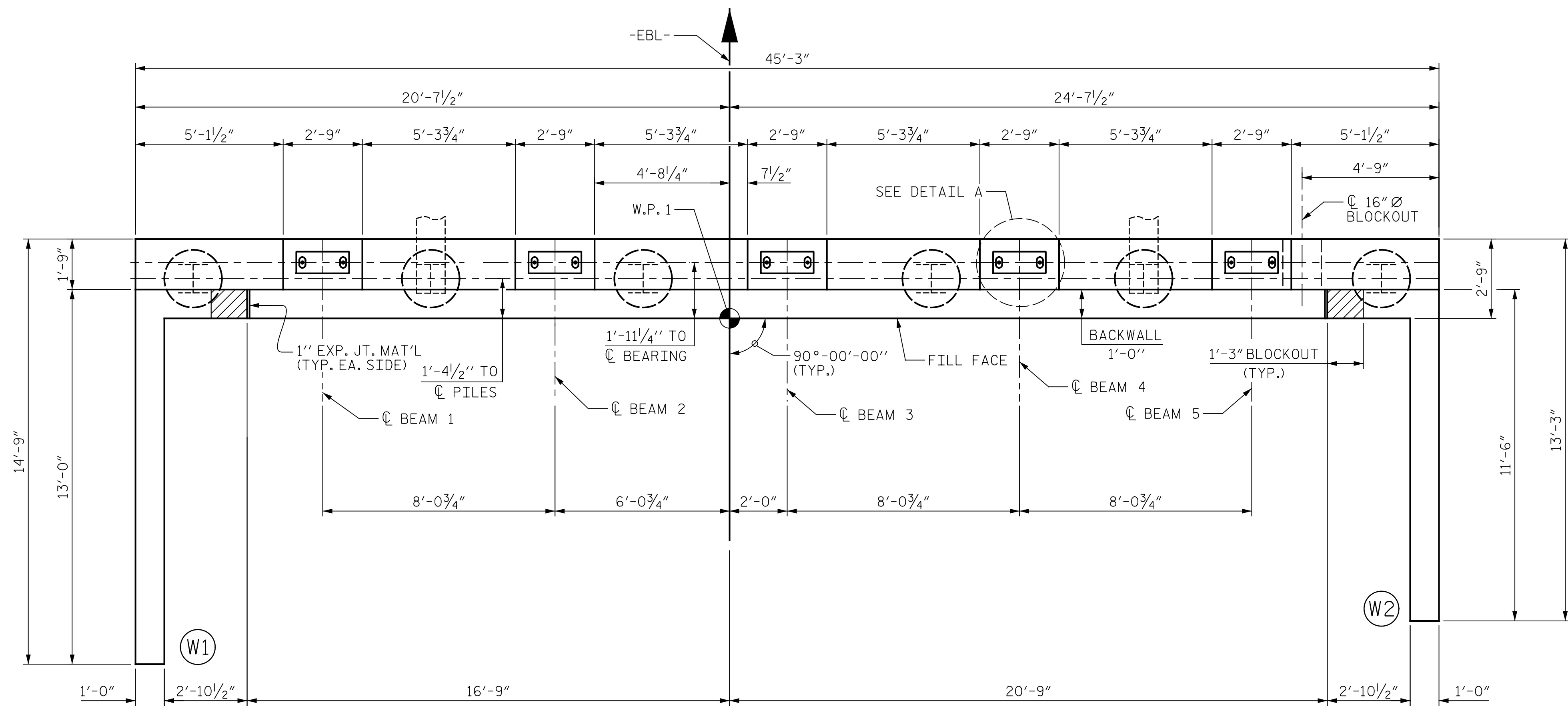
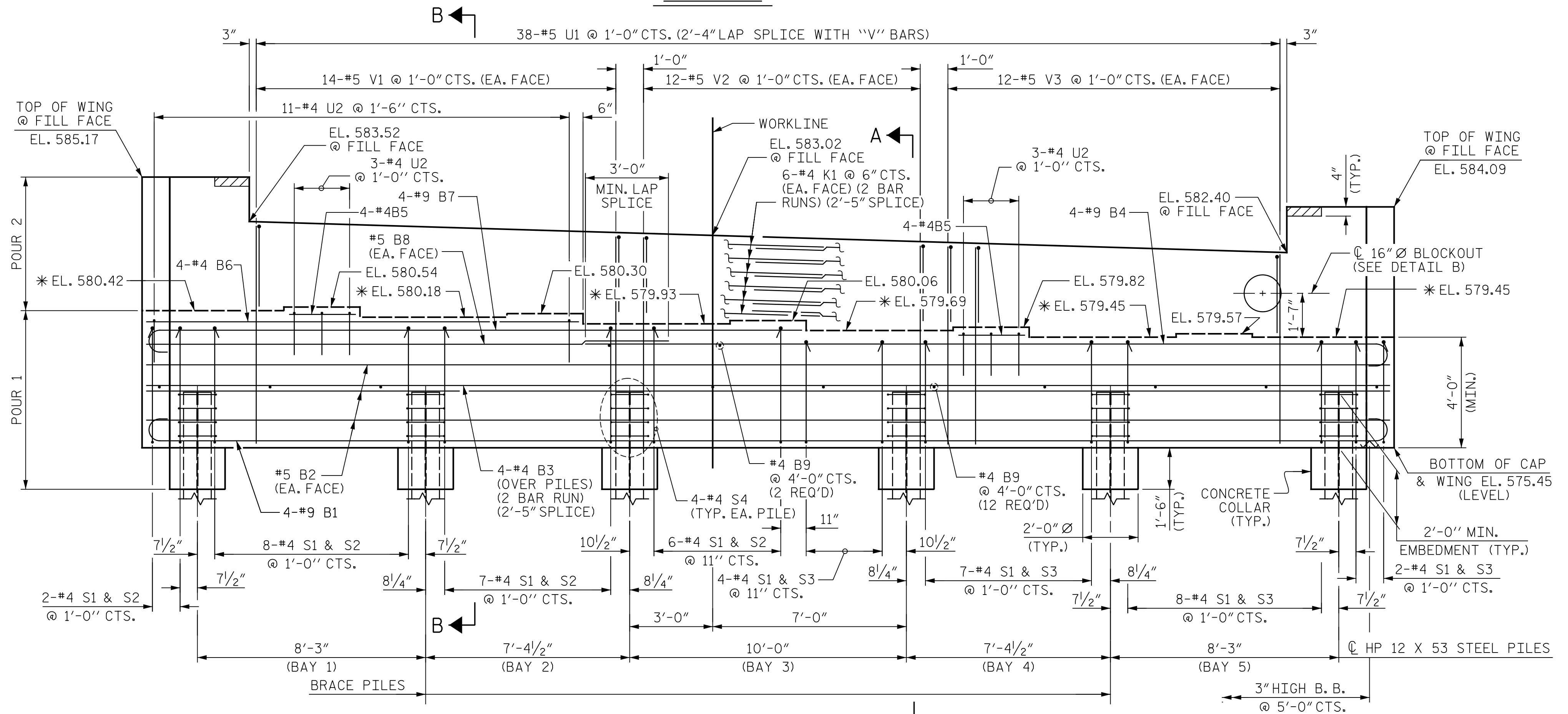


p:\gfn\et-pw\Bentley.com\gnet-pw-01\Documents\Projects\63639\Task 010 B-4626\Discipline\Struct\DN\Rowan 3\Archives\Delete\401-117-B4626-SMU_E101-790003_057 9/2/2021 4:03:14 PM pdf_color_gfclt_FS.plt Rowan.pen,tbl



PLAN

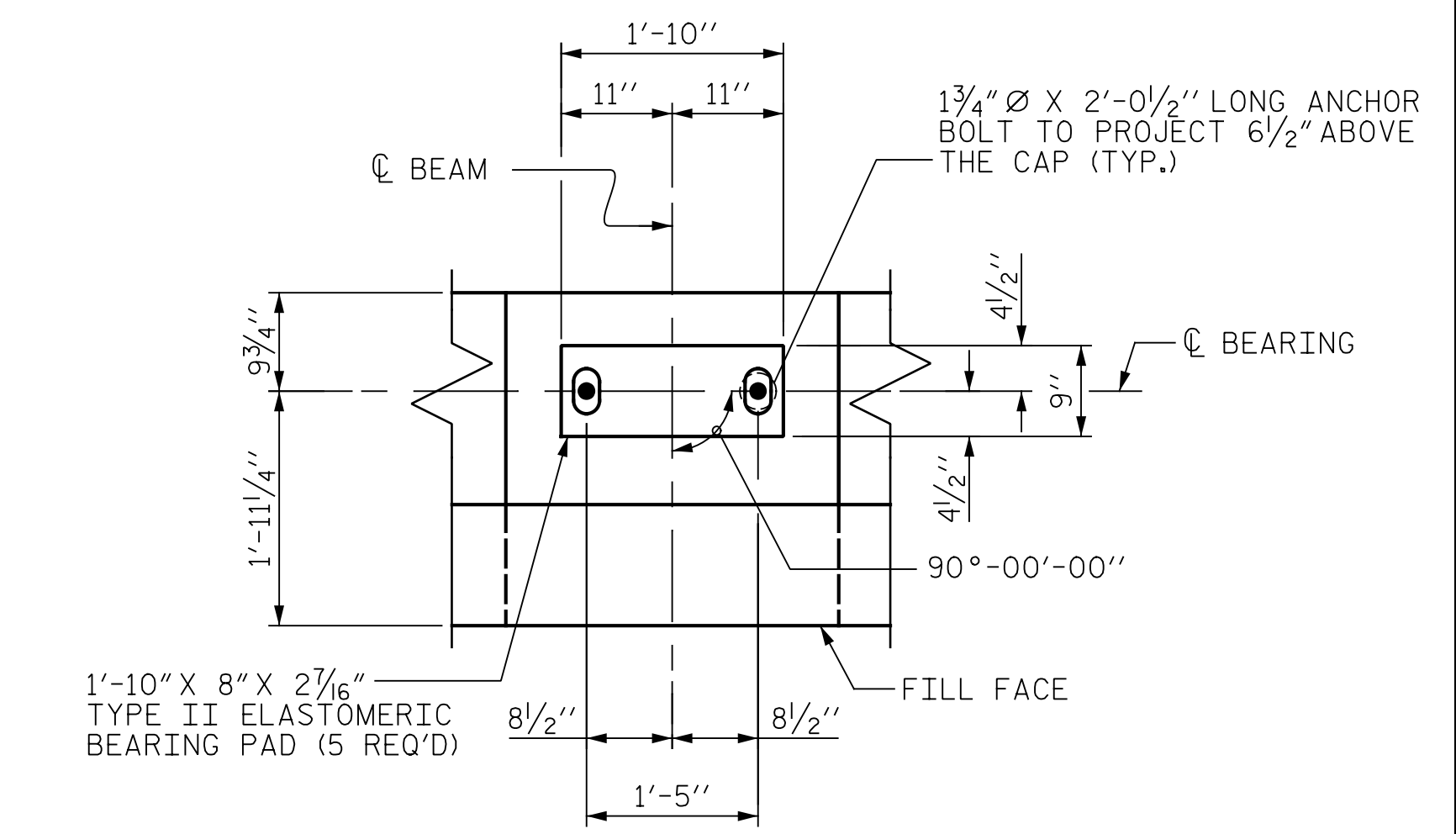


ELEVATION

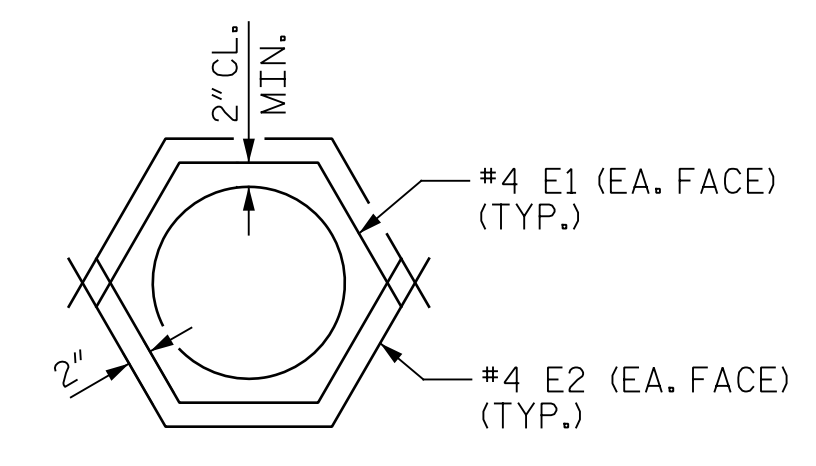
REINFORCING STEEL NOT SHOWN IN WINGS FOR CLARITY

NOTES:

- STIRRUPS AND U2 BARS IN CAP MAY BE SHIFTED AS NECESSARY TO CLEAR ANCHOR BOLTS.
- FOR PILE SPLICE DETAILS, SEE SHEET 3 OF 3.
- BACKWALL SHALL BE PLACED BEFORE APPLYING THE EPOXY PROTECTIVE COATING.
- THE TOP SURFACE AREAS OF THE END BENT CAPS SHALL BE CURED IN ACCORDANCE WITH THE STANDARD SPECIFICATIONS EXCEPT THE MEMBRANE CURING COMPOUND METHOD SHALL NOT BE USED.
- * THE TOP SURFACE OF THE END BENT CAP EXCEPT THE BRIDGE SEAT BUILDUPS SHALL BE SLOPED TRANSVERSELY FROM THE FILL FACE TO THE BACK FACE AT THE RATE OF 2%.
- THE CONCRETE IN THE SHADED AREA OF THE WING SHALL BE POURED AFTER THE JOINT BETWEEN THE DECK AND THE APPROACH SLAB HAS BEEN SAWED AND THE BARRIER RAILS ARE CAST IF SLIP FORMING IS USED.
- FIELD CUT HORIZONTAL AND VERTICAL REBAR IN THE BACKWALL TO MAINTAIN 2" CLEAR COVER WITH BLOCKOUT.
- THE VOID FOR THE 16" Ø BLOCKOUT SHALL BE FILLED WITH CLASS A CONCRETE.



DETAIL A
(TYP. EA. BRG.)



DETAIL B
16" Ø BLOCKOUT

PROJECT NO. B-4626
STANLY, ROWAN
AND DAVIDSON COUNTY
 STATION: 45+22.65 -EBL-

SHEET 1 OF 3



STATE OF NORTH CAROLINA
 DEPARTMENT OF TRANSPORTATION
 RALEIGH

SUBSTRUCTURE
 END BENT 1

DRAWN BY : J. MYA DATE : 04/2021
 CHECKED BY : J. YANNAACONE DATE : 05/2021
 DESIGN ENGINEER OF RECORD : R. NELSON DATE : 05/2021

PLANS PREPARED BY:
Gannett Fleming
 Excellence Delivered As Promised

One Glenwood Avenue
 Suite 900
 Raleigh, NC 27603
 (919) 420-7660
 NC Lic. No. F-0270

DOCUMENT NOT CONSIDERED FINAL UNLESS ALL SIGNATURES COMPLETED

REVISIONS						SHEET NO.
NO.	BY:	DATE:	NO.	BY:	DATE:	S1-57
1			3			TOTAL SHEETS
2			4			125