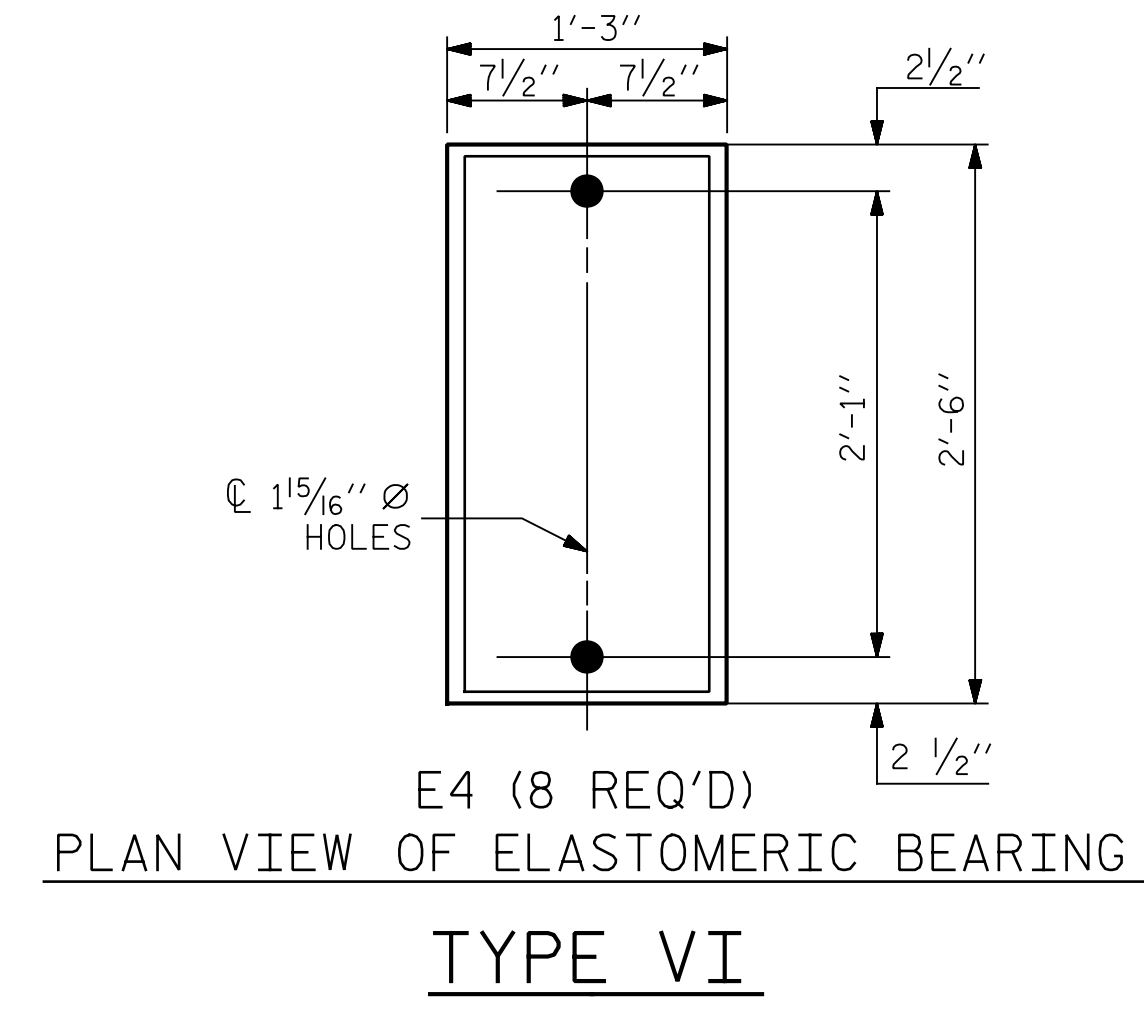
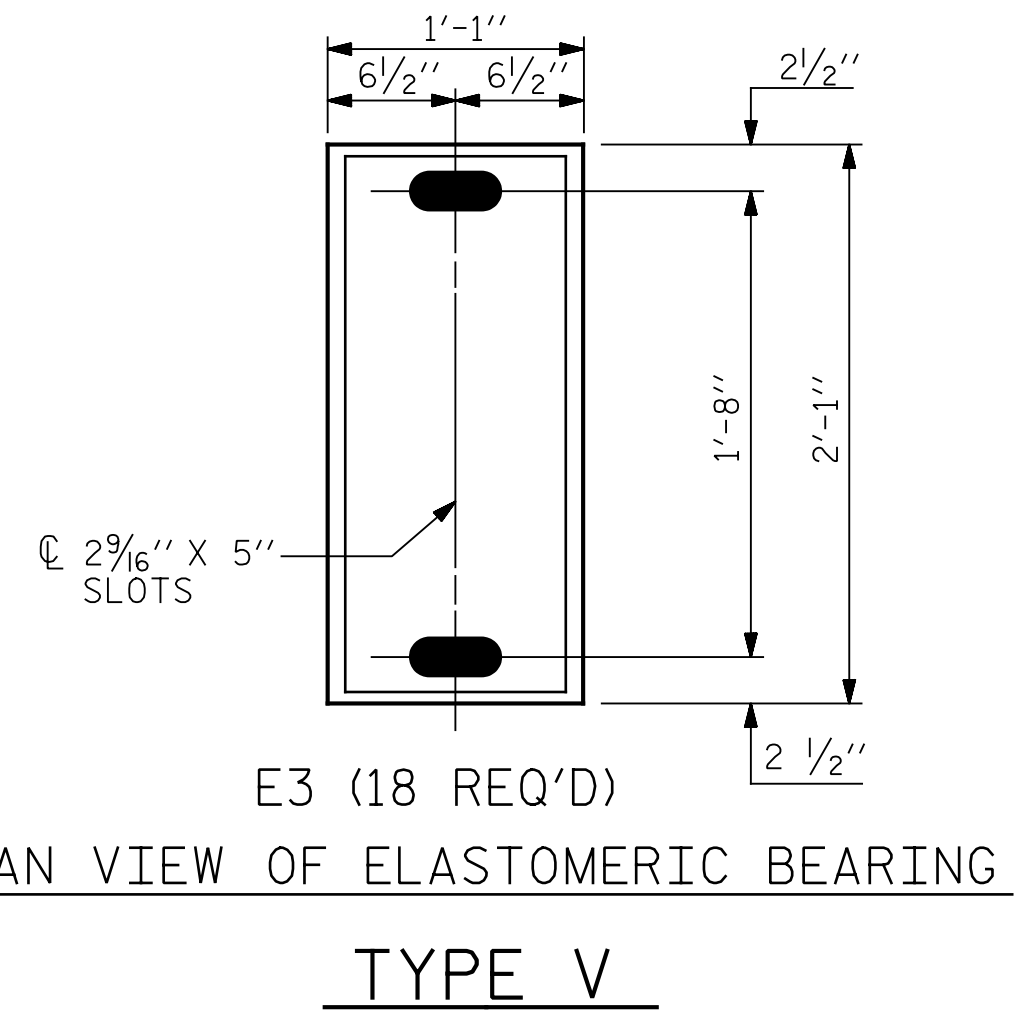
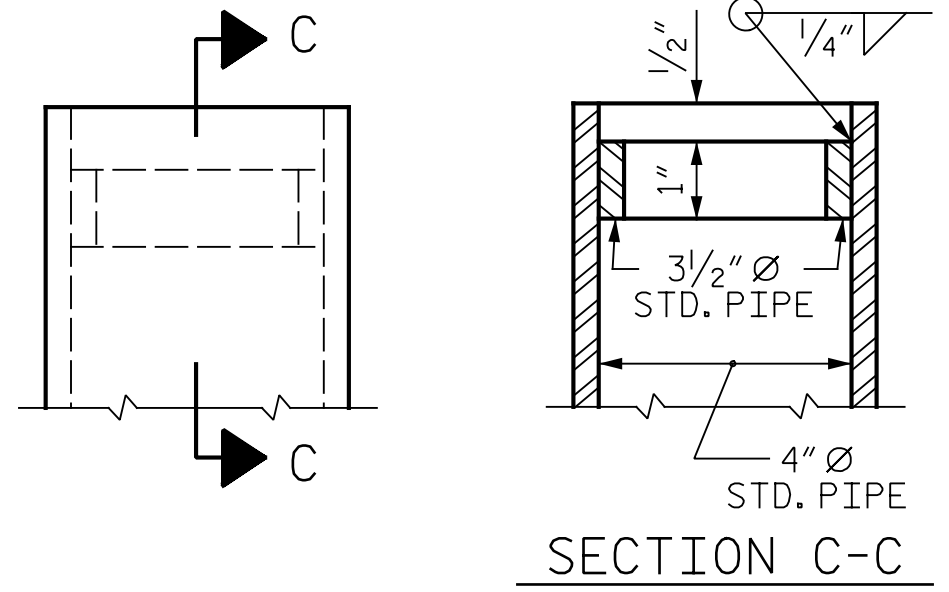
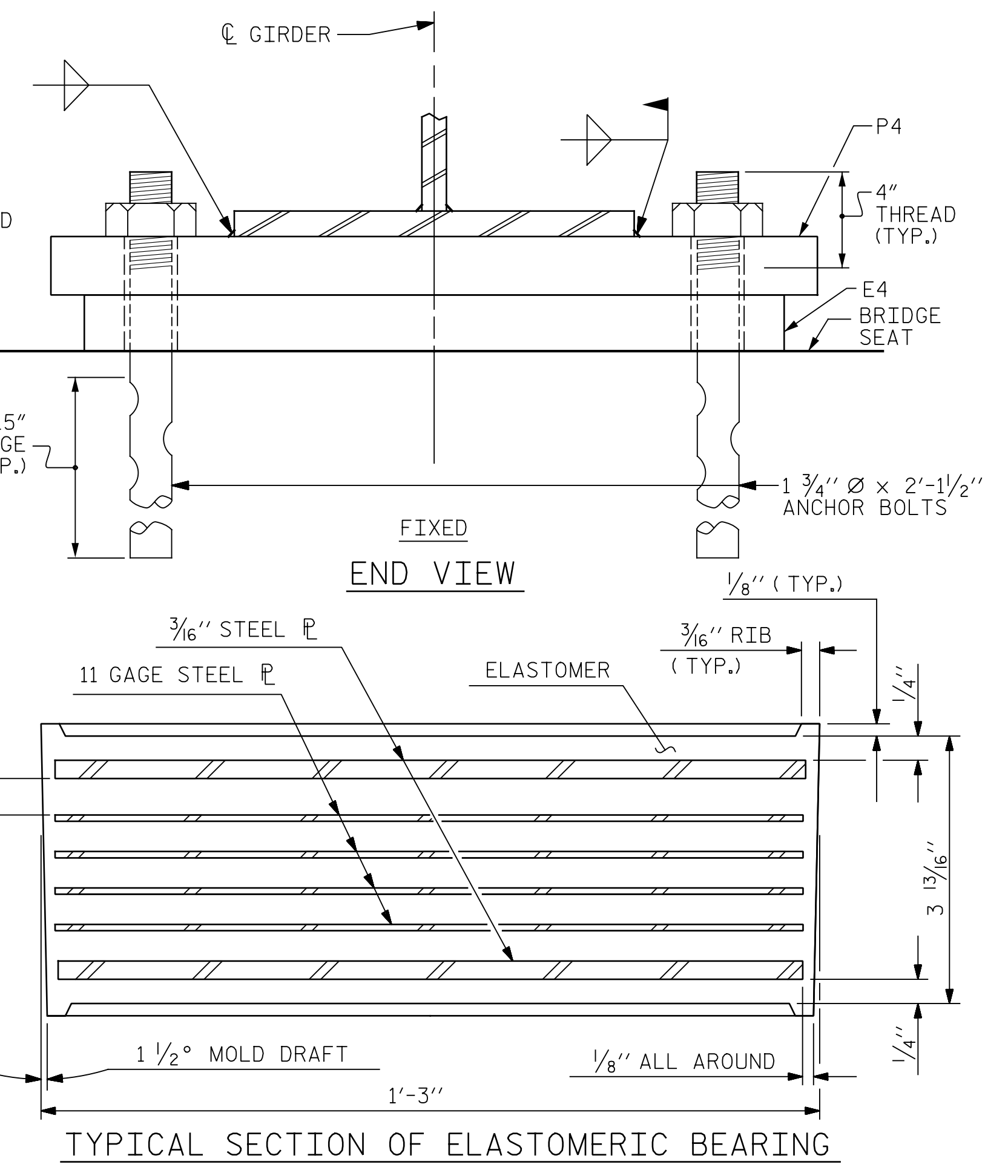
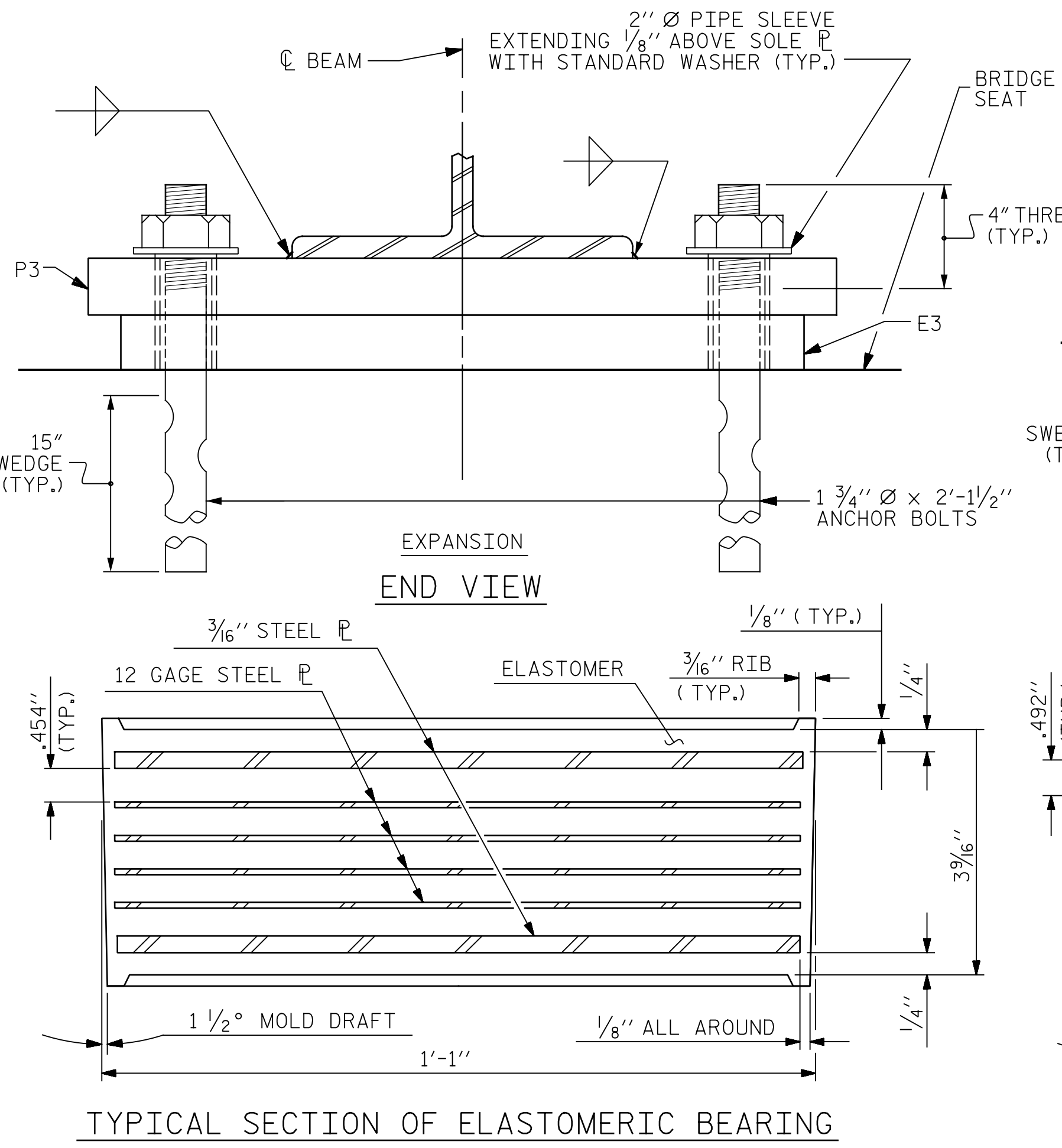
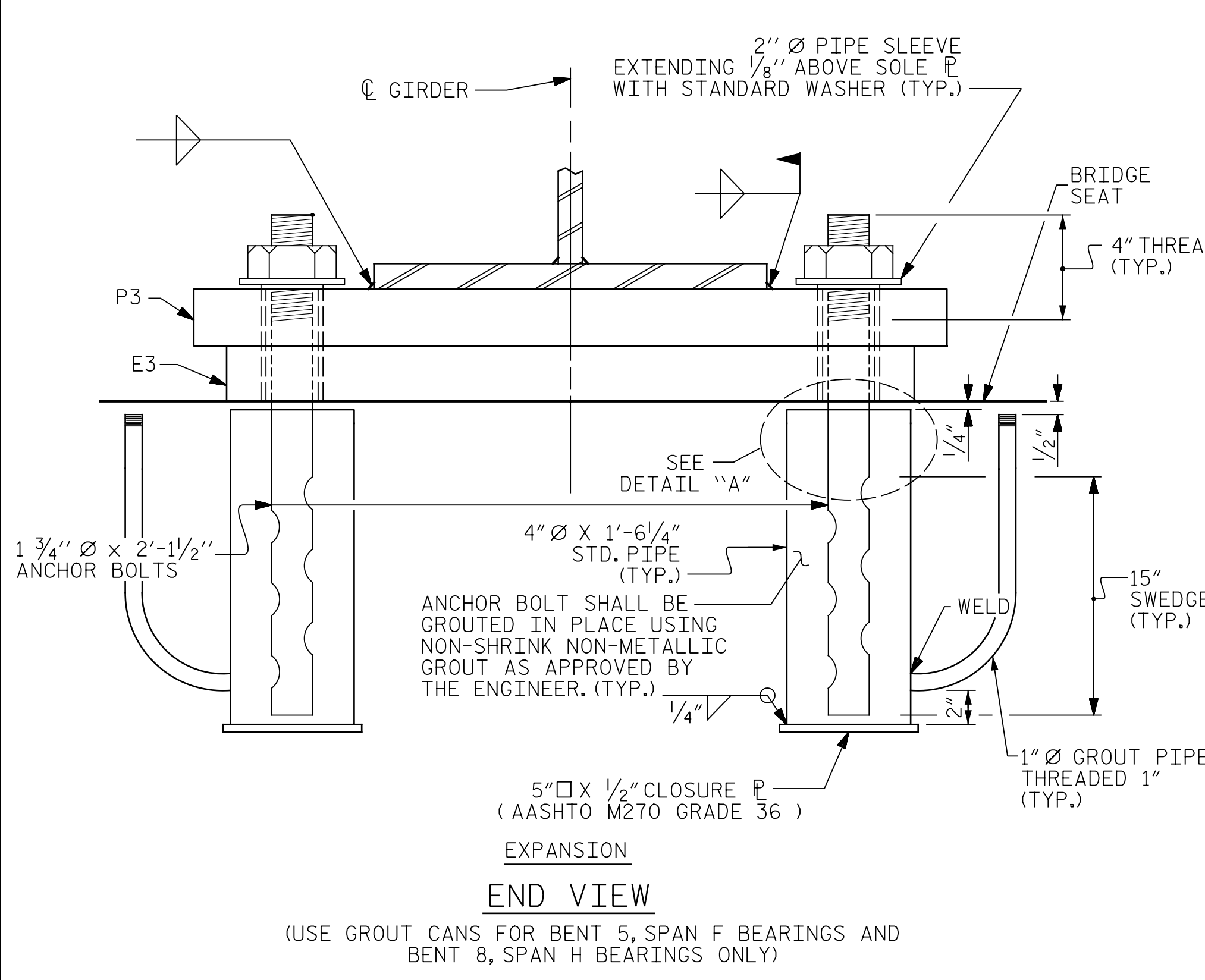
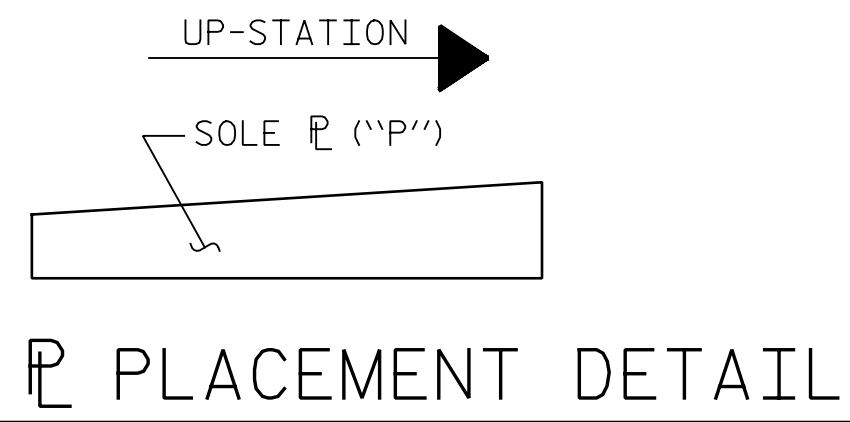
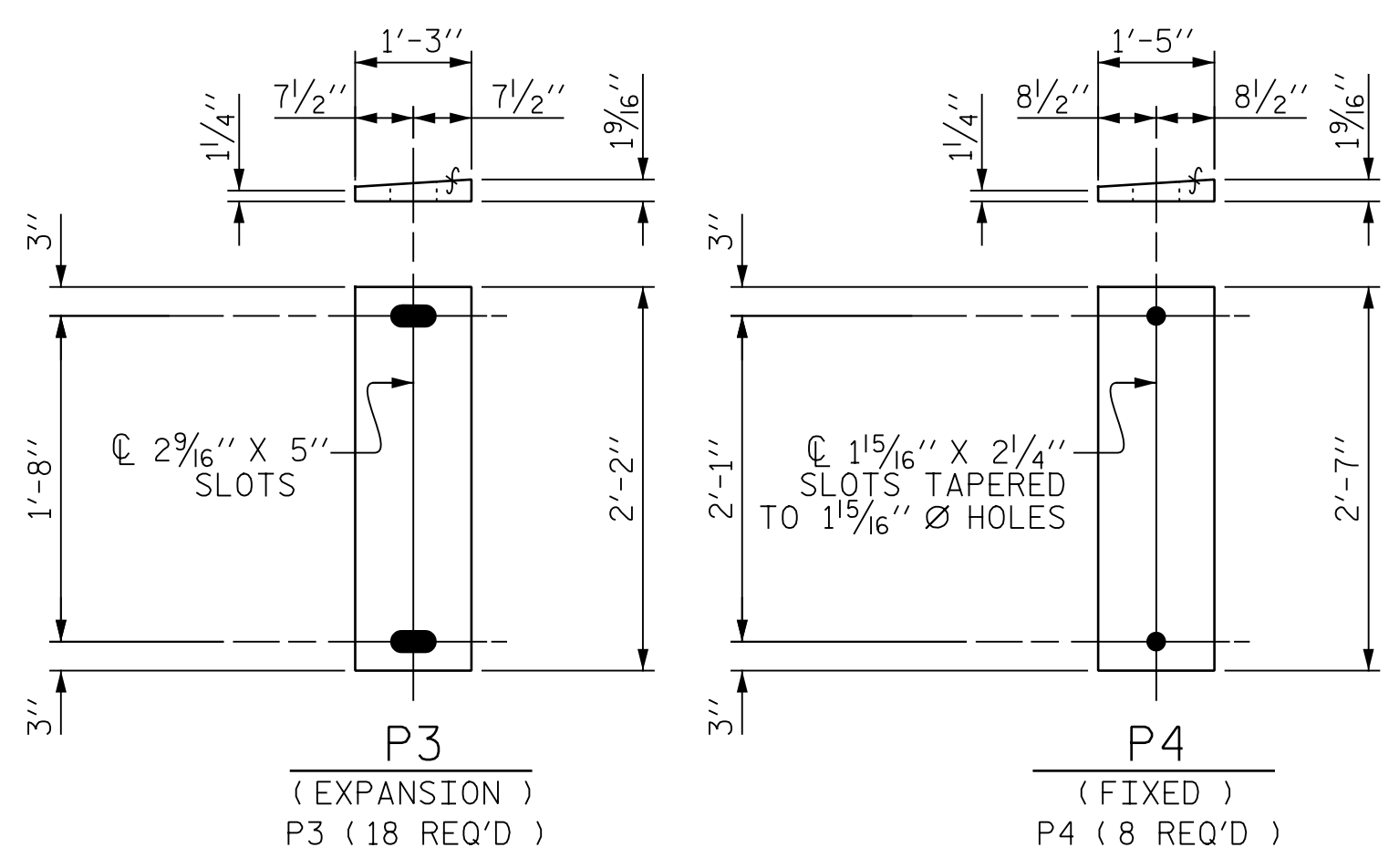


p:\gfn\p-w\ben\p-w\01\Documents\Projects\63639\Task 010 B-4626\Discipline\Struct\DN\Rowan 3\Archives\Delete\401-073_B4626_SMU_BG02_790003_035 9/13/2021 2:09:08 PM pdf_color_gfclt_FS.plt Rowan.pen.tbl



MAXIMUM ALLOWABLE SERVICE LOADS	
D.L.+L.L. (NO IMPACT)	
TYPE V	335 k
TYPE VI	616 k



NOTES

THE CONTRACTOR'S ATTENTION IS CALLED TO THE FOLLOWING PROCEDURE, (FOR BENT 5, SPAN F BEARINGS AND BENT 8, SPAN H BEARINGS ONLY) WHICH MAY BE REQUIRED BY THE ENGINEER, TO RESET ELASTOMERIC BEARINGS DUE TO GIRDER TRANSLATION AND END ROTATION:

- ONCE THE DECK HAS CURED, THE GIRDERS SHALL BE JACKED AND THE ELASTOMERIC BEARING SLOTS CENTERED AS NEARLY AS PRACTICAL ABOUT THE BEARING STIFFENER. THIS OPERATION SHALL BE PERFORMED AT APPROXIMATELY 60° F.
- AFTER CENTERING THE ELASTOMERIC BEARINGS SLOTS AND ANCHOR BOLTS, THE ANCHOR BOLTS SHALL BE GROUTED.

THE CONTRACTOR MAY PROPOSE ALTERNATE METHODS, PROVIDED DETAILS ARE SUBMITTED TO THE ENGINEER FOR REVIEW AND APPROVAL.

PROJECT NO. B-4626
 STANLY, ROWAN
 AND DAVIDSON COUNTY
 STATION: 45+22.65 -EBL-

SHEET 2 OF 2

STATE OF NORTH CAROLINA
 DEPARTMENT OF TRANSPORTATION
 RALEIGH
 STANDARD
 ELASTOMERIC BEARING
 DETAILS
 (STEEL SUPERSTRUCTURE)

ASSEMBLED BY : J. MYA	DATE : 04/2021
CHECKED BY : R. FISHER	DATE : 04/2021
DRAWN BY : EEM 10/95	REV. 10/1/11 MAA/GM
CHECKED BY : PEK 10/95	REV. 6/13 AAC/MAA
	REV. 12/17 MAA/THC

PLANS PREPARED BY:
Gannett Fleming
 Excellence Delivered As Promised

One Glenwood Avenue
 Suite 900
 Raleigh, NC 27603
 (919) 420-7660
 NC Lic. No. F-0270



DOCUMENT NOT CONSIDERED FINAL UNLESS ALL SIGNATURES COMPLETED

REVISIONS						SHEET NO.
NO.	BY:	DATE:	NO.	BY:	DATE:	S1-35
1			3			TOTAL SHEETS
2			4			125

STD. NO. EB2