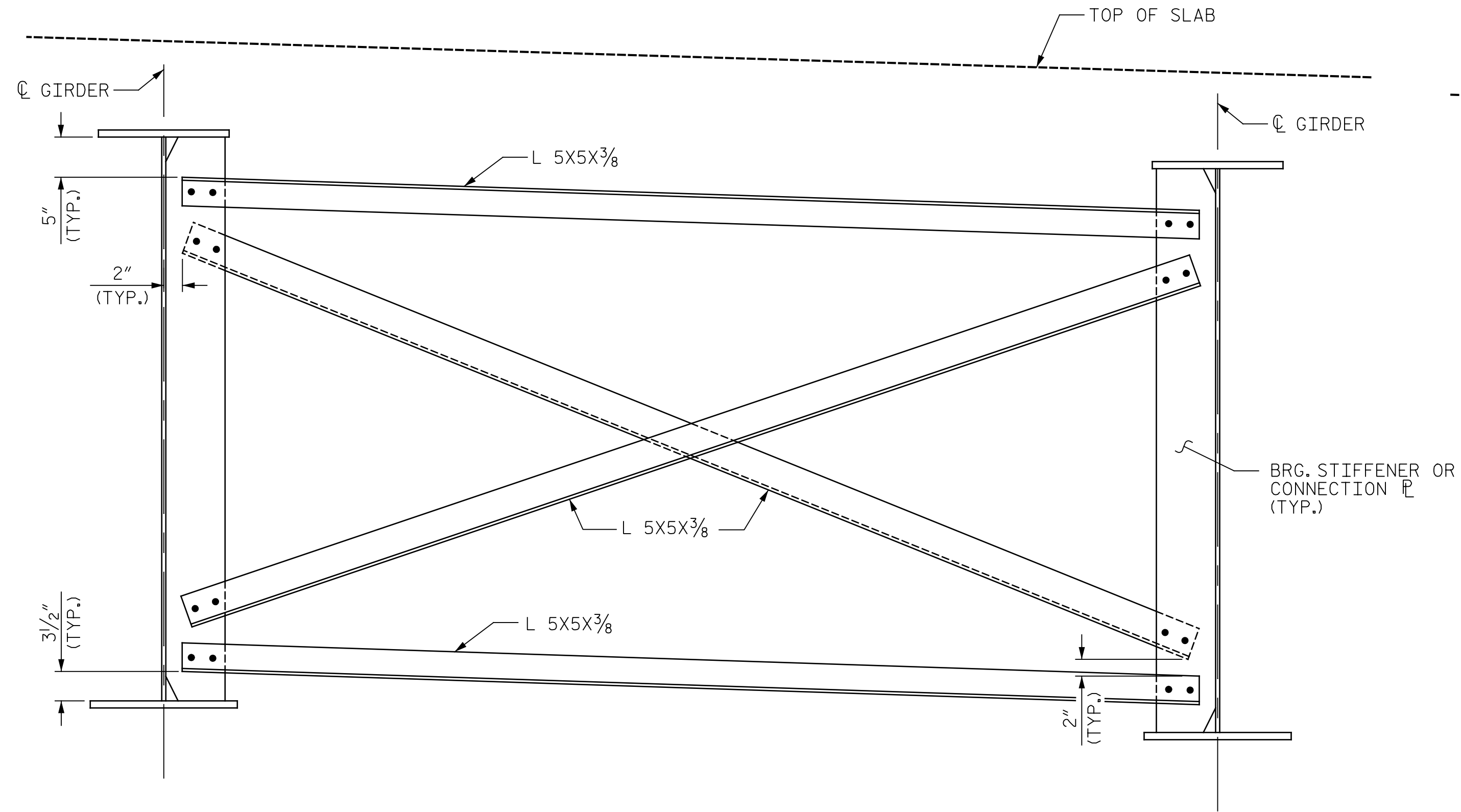
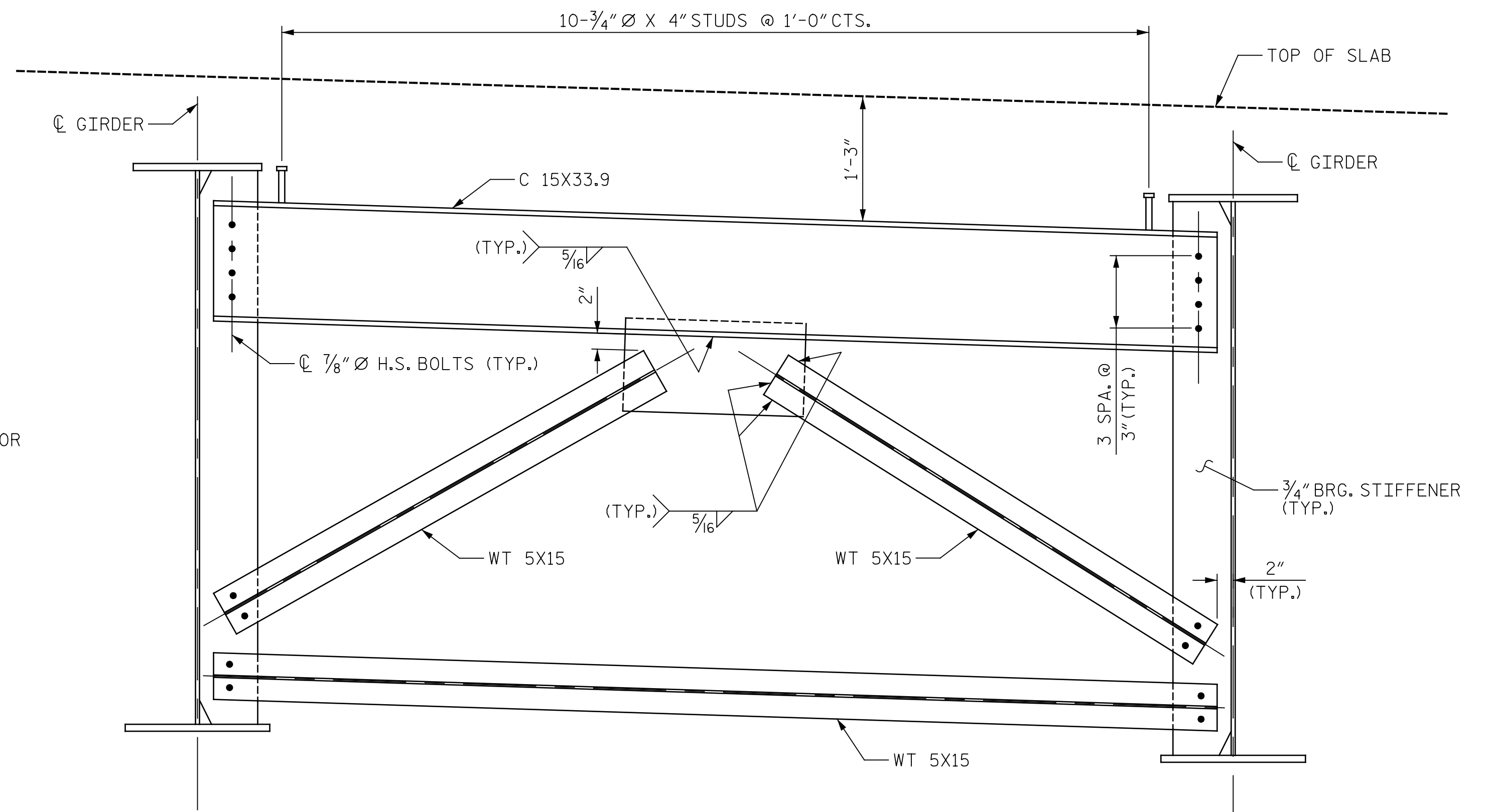


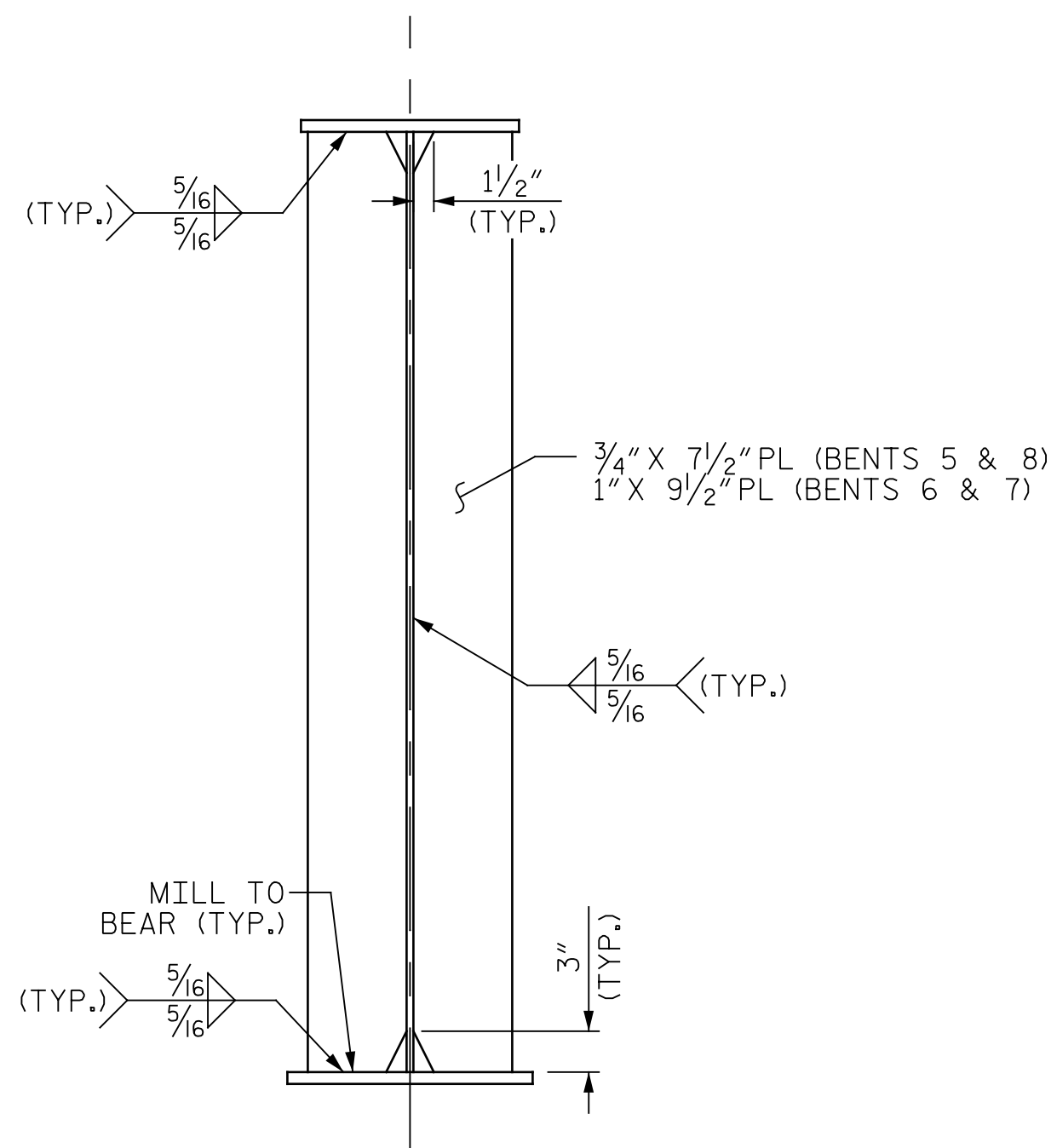
p:\gfn\p-w-bentley.com\gfn\p-w-01\Documents\Projects\63639\Task 010 B-4626\Discipline\Struct\DN\Rowan 3\Archives\Delete\401_065_B4626_SMU_C05_790003_031 9/2/2021 4:00:08 PM pdf_color_gfclt_FS.plt Rowan.pen.tbl



INTERMEDIATE CROSS FRAME (D5) & BENT DIAPHRAGM (D6)

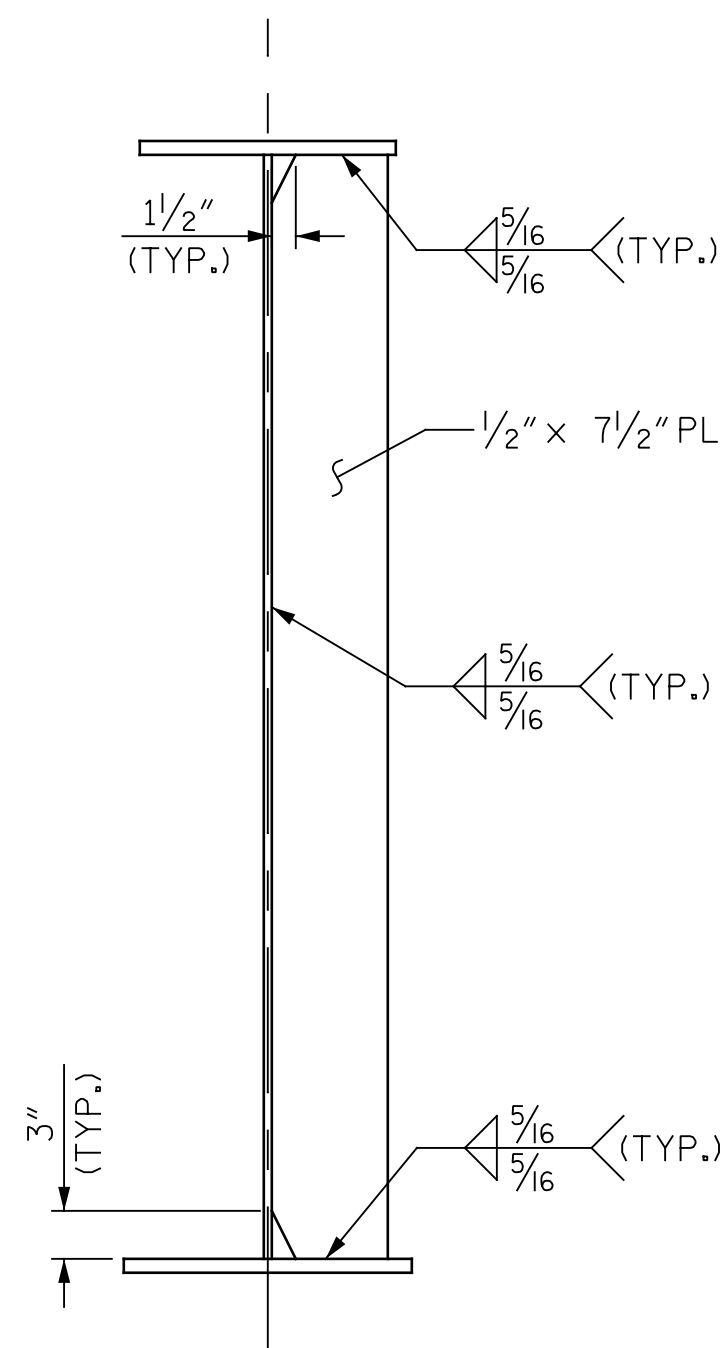


END DIAPHRAGM @ BENT 5 & 8 (D4)

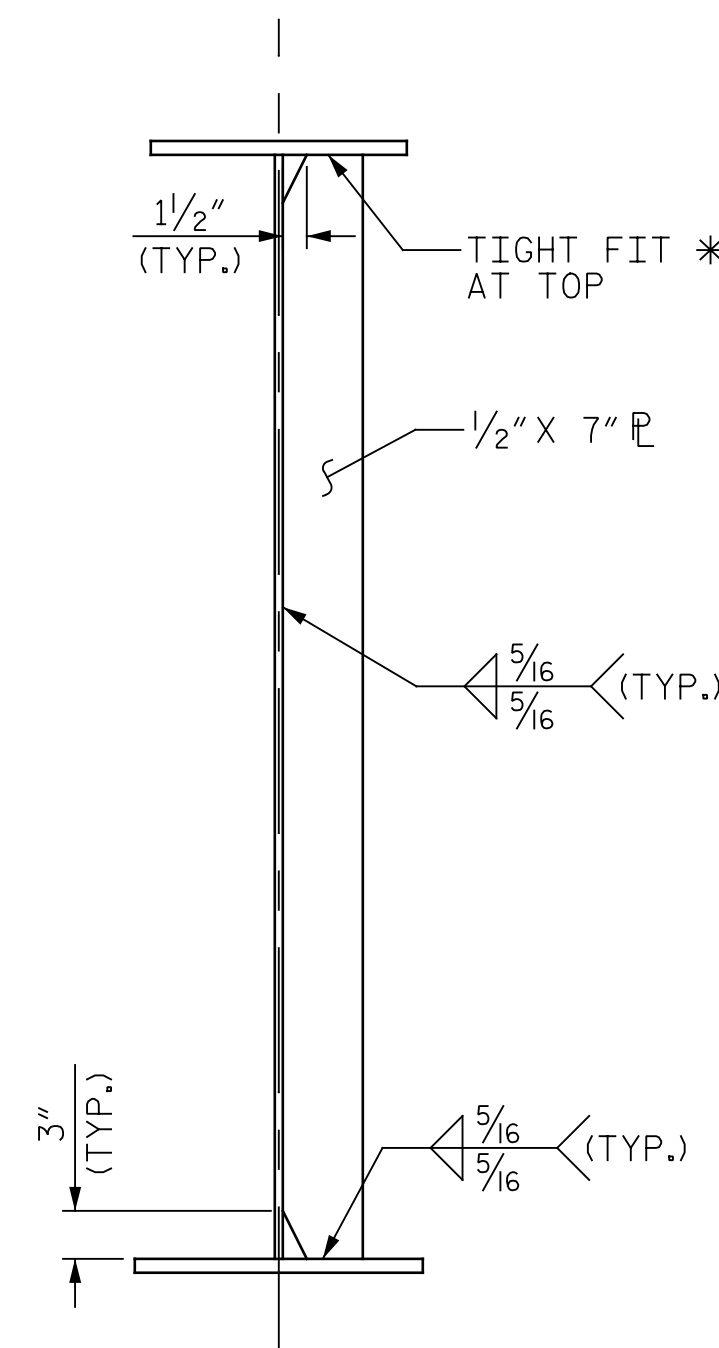


BEARING STIFFENER DETAIL & BENT DIAPHRAGM CONNECTOR PLATE

(INTERIOR BEAM SHOWN)



INTERMEDIATE CROSS FRAME CONNECTOR PLATE DETAIL



TRANSVERSE STIFFENER DETAIL

(TOP FLANGE IN TENSION)

* IF TRANSVERSE STIFFENERS ARE USED FOR CONNECTOR PLATES, WELD TOP AND BOTTOM OF STIFFENERS TO FLANGES. INCREASE STIFFENER WIDTH AS REQUIRED WHEN USED AS A CONNECTOR PLATE. INCREASE STIFFENER THICKNESS AS REQUIRED TO MAINTAIN WIDTH TO THICKNESS RATIO NO LARGER THAN 14.0.

PROJECT NO. B-4626
STANLY, ROWAN
AND DAVIDSON COUNTY
 STATION: 45+22.65 -EBL-

SHEET 5 OF 7

STATE OF NORTH CAROLINA
 DEPARTMENT OF TRANSPORTATION
 RALEIGH

SUPERSTRUCTURE
 STRUCTURAL STEEL
 DETAILS



DocuSigned by:
 Eric B. Nelson 9/2/2021
 ACB892119274C0

DRAWN BY : T. FORD DATE : 04/2021
 CHECKED BY : R. FISHER DATE : 05/2021
 DESIGN ENGINEER OF RECORD: R. NELSON DATE : 05/2021

PLANS PREPARED BY:
Gannett Fleming
 Excellence Delivered As Promised
 One Glenwood Avenue
 Suite 900
 Raleigh, NC 27603
 (919) 420-7660
 NC Lic. No. F-0270

DOCUMENT NOT CONSIDERED
 FINAL UNLESS ALL
 SIGNATURES COMPLETED

REVISIONS						SHEET NO.
NO.	BY:	DATE:	NO.	BY:	DATE:	S1-31
1			3			TOTAL SHEETS
2			4			125