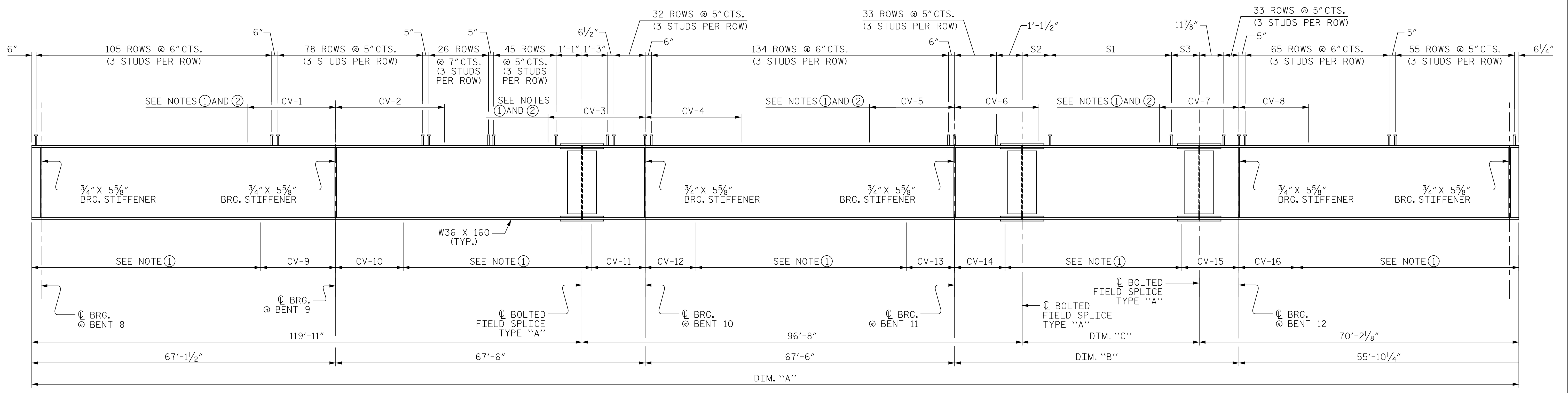
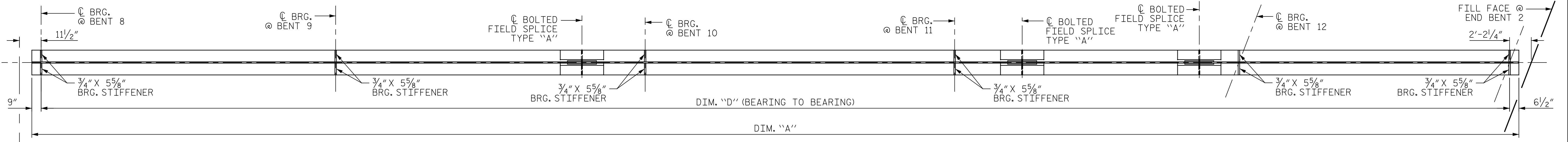


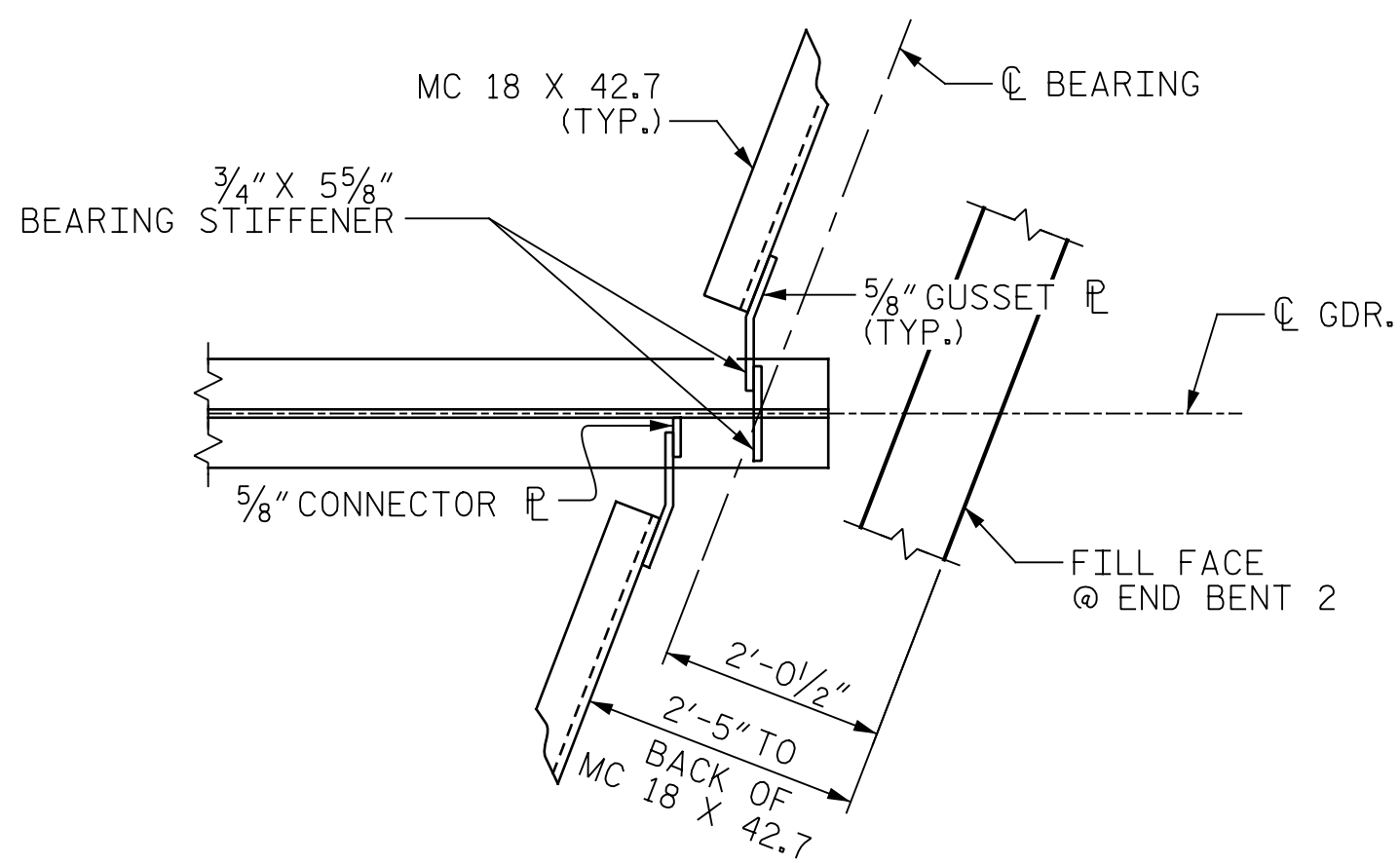
p:\gfn\p-bentley.com\gfn\p-w-01\Documents\Projects\63639\Task 010 B-4626\Discipline\Struct\DN\Rowan 3\Archives\Delete\401\_061\_B4626\_SMU\_003\_790003\_029  
 Rowan.pen.tbl  
 9/2/2021 3:59:54 PM pdf\_color\_gfclt\_FS.plt



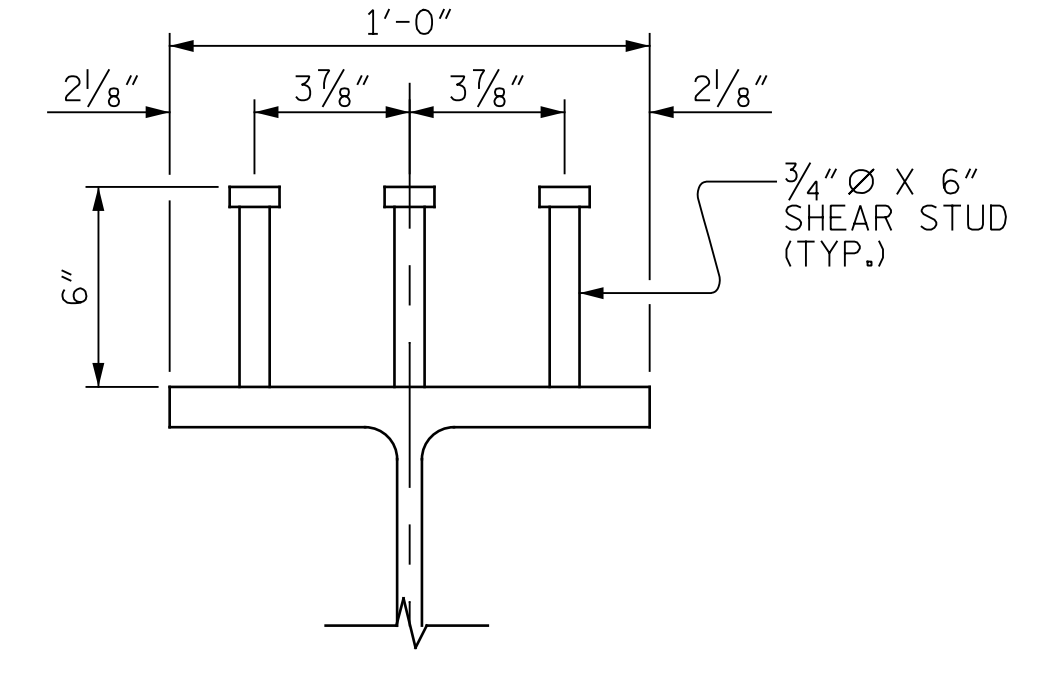
**ROLLED BEAM ELEVATION**  
 (DIAPHRAGM CONNECTION PLATES NOT SHOWN)



**PLAN OF BOTTOM FLANGE**



**END DIAPHRAGM CONNECTION DETAIL**



**SHEAR STUD DETAILS**

CHARPY V-NOTCH DIMENSIONS						
		GIRDER 1	GIRDER 2	GIRDER 3	GIRDER 4	GIRDER 5
TOP FLANGE	CV-1	15'-6"	15'-6"	15'-6"	15'-6"	15'-6"
	CV-2	19'-6"	19'-6"	19'-6"	19'-6"	19'-6"
	CV-3	16'-0"	16'-0"	16'-0"	16'-0"	16'-6"
	CV-4	14'-0"	14'-6"	14'-0"	14'-0"	14'-0"
	CV-5	16'-0"	15'-6"	13'-6"	13'-0"	13'-0"
	CV-6	16'-6"	16'-0"	15'-6"	17'-0"	17'-0"
	CV-7	16'-0"	15'-6"	15'-0"	17'-0"	16'-6"
BOTTOM FLANGE	CV-8	16'-0"	13'-6"	13'-6"	13'-0"	13'-6"
	CV-9	9'-6"	9'-6"	9'-6"	9'-6"	9'-0"
	CV-10	10'-6"	11'-0"	11'-0"	11'-0"	10'-6"
	CV-11	8'-0"	8'-6"	9'-0"	9'-0"	8'-6"
	CV-12	8'-0"	8'-6"	8'-6"	8'-6"	8'-0"
	CV-13	8'-6"	8'-6"	8'-6"	8'-0"	7'-0"
	CV-14	8'-6"	9'-0"	8'-6"	8'-6"	8'-0"
	CV-15	9'-0"	9'-0"	9'-0"	8'-6"	8'-0"
	CV-16	8'-0"	8'-0"	8'-0"	7'-6"	7'-0"

BEAM DIMENSIONS				
	DIM. "A"	DIM. "B"	DIM. "C"	DIM. "D"
BEAM 1	326'-2 5/16"	68'-2 5/8"	39'-5 3/16"	324'-10 3/16"
BEAM 2	323'-1 1/16"	65'-1 5/16"	36'-3 5/16"	321'-9 9/16"
BEAM 3	319'-11 3/4"	62'-0"	33'-2 5/8"	318'-8 1/4"
BEAM 4	316'-10 7/16"	58'-10 1/16"	30'-1 5/16"	315'-6 15/16"
BEAM 5	313'-9 1/8"	55'-9 3/8"	27'-0"	312'-5 5/8"

SHEAR STUD ARRANGEMENT			
	S1	S2	S3
BEAM 1	91 ROWS @ 5" CTS.	11 9/16"	11 5/8"
BEAM 2	83 ROWS @ 5" CTS.	1'-0 15/16"	1'-1"
BEAM 3	76 ROWS @ 5" CTS.	11 13/16"	11 13/16"
BEAM 4	68 ROWS @ 5" CTS.	1'-1 1/8"	1'-1 3/16"
BEAM 5	61 ROWS @ 5" CTS.	1'-0"	1'-0"

**CHARPY V-NOTCH NOTES:**

- ① CHARPY V-NOTCH TESTS ARE REQUIRED FOR ALL TOP OR BOTTOM OF FLANGE PLATES WHICH FALL WITHIN THESE LIMITS. ALL WEB PLATES AND ALL SPLICE PLATES. IF A PERMITTED SHOP FLANGE SPLICE IS NOT USED, CHARPY V-NOTCH TESTS WILL BE REQUIRED FOR THE ENTIRE FLANGE PLATE. FOR CHARPY V-NOTCH TEST, SEE ARTICLE 1072-7 OF THE STANDARD SPECIFICATIONS.
- ② NO WELDING OF FORMS OR FALSEWORK TO THE TOP FLANGE WILL BE PERMITTED IN THIS REGION.

PROJECT NO. B-4626  
STANLY, ROWAN  
 AND DAVIDSON COUNTY  
 STATION: 45+22.65 -EBL-

SHEET 3 OF 7



STATE OF NORTH CAROLINA  
 DEPARTMENT OF TRANSPORTATION  
 RALEIGH  
**SUPERSTRUCTURE  
 STRUCTURAL STEEL  
 DETAILS  
 UNIT 3**

DRAWN BY: T. FORD DATE: 04/2020  
 CHECKED BY: R. FISHER DATE: 05/2021  
 DESIGN ENGINEER OF RECORD: R. NELSON DATE: 05/2021

PLANS PREPARED BY:  
**Gannett Fleming**  
 Excellence Delivered As Promised  
 One Glenwood Avenue  
 Suite 900  
 Raleigh, NC 27603  
 (919) 420-7660  
 NC Lic. No. F-0270

DOCUMENT NOT CONSIDERED  
 FINAL UNLESS ALL  
 SIGNATURES COMPLETED

REVISIONS						SHEET NO.
NO.	BY:	DATE:	NO.	BY:	DATE:	S1-29
1			3			TOTAL SHEETS
2			4			125