

p:\gfn\p-w\bentley.com\gnet-pw-01\Documents\Projects\63639\Task 010 B-4626\Discipline\Struct\DN\Rowan 3\Archives\Delete\401_059_B4626_SMU_C02_790003_028 9/2/2021 3:59:48 PM pdf_color_gfcolt_FS.plt Rowan.pen.tbi

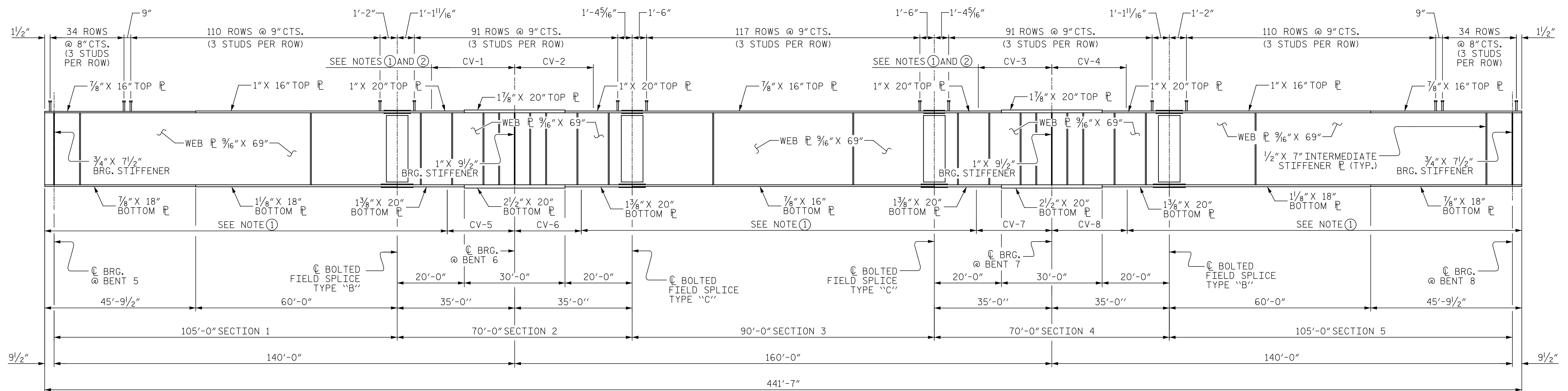
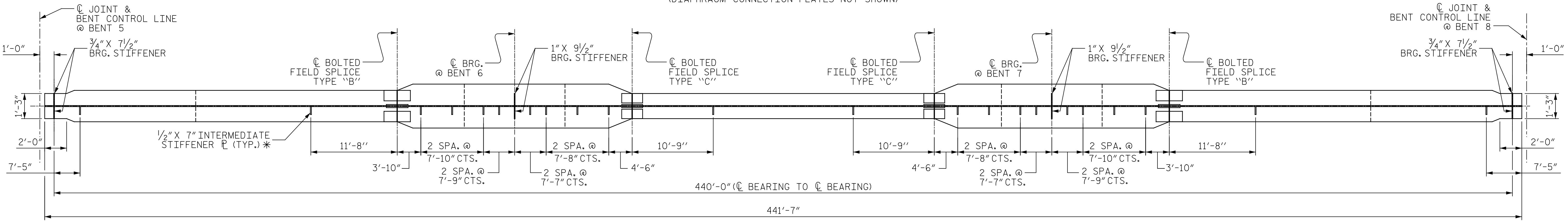
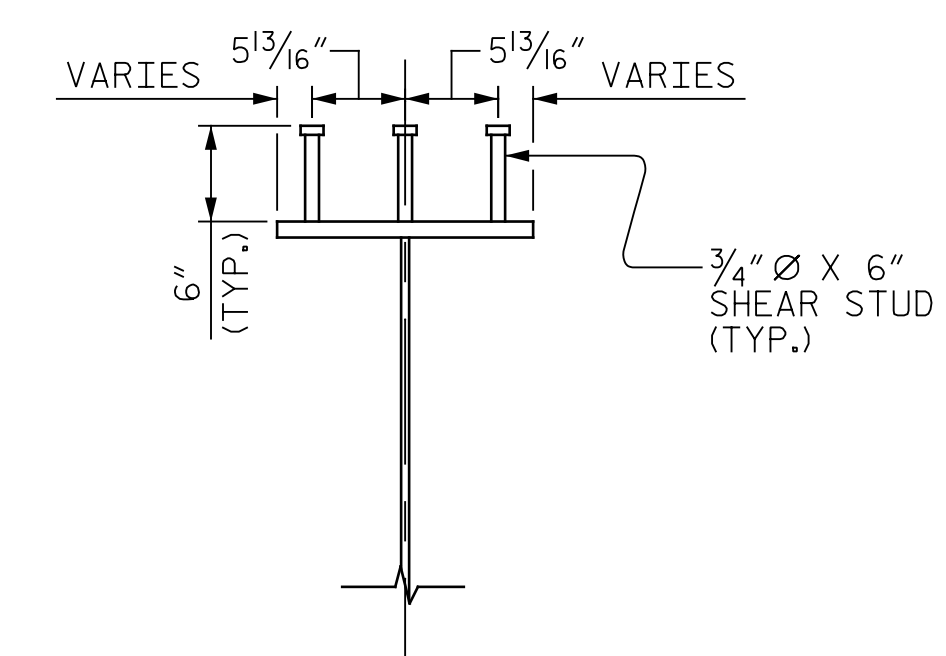


PLATE GIRDER ELEVATION
(DIAPHRAGM CONNECTION PLATES NOT SHOWN)



PLAN OF BOTTOM FLANGE

* = PLACE ALL INTERMEDIATE WEB STIFFENERS ON THE INSIDE FACE OF THE WEB ON EXTERIOR GIRDERS.



SHEAR STUD DETAILS

CHARPY V-NOTCH DIMENSIONS					
		GIRDER 1	GIRDER 2	GIRDER 3	GIRDER 4
TOP FLANGE	CV-1	40'-6"	40'-0"	40'-0"	40'-6"
	CV-2	47'-0"	46'-6"	46'-6"	47'-0"
	CV-3	47'-0"	46'-6"	46'-6"	47'-0"
	CV-4	40'-6"	40'-0"	40'-0"	40'-6"
BOTTOM FLANGE	CV-5	26'-6"	28'-0"	28'-0"	26'-6"
	CV-6	31'-0"	32'-6"	32'-6"	31'-0"
	CV-7	31'-0"	32'-6"	32'-6"	31'-0"
	CV-8	26'-6"	28'-0"	28'-0"	26'-6"

CHARPY V-NOTCH NOTES:

- ① CHARPY V-NOTCH TESTS ARE REQUIRED FOR ALL TOP OR BOTTOM OF FLANGE PLATES WHICH FALL WITHIN THESE LIMITS. ALL WEB PLATES AND ALL SPLICE PLATES, IF A PERMITTED SHOP FLANGE SPLICE IS NOT USED, CHARPY V-NOTCH TESTS WILL BE REQUIRED FOR THE ENTIRE FLANGE PLATE. FOR CHARPY V-NOTCH TEST, SEE ARTICLE 1072-7 OF THE STANDARD SPECIFICATIONS.
- ② NO WELDING OF FORMS OR FALSEWORK TO THE TOP FLANGE WILL BE PERMITTED IN THIS REGION.

PROJECT NO. B-4626
STANLY, ROWAN
AND DAVIDSON COUNTY
 STATION: 45+22.65 -EBL-

SHEET 2 OF 7

STATE OF NORTH CAROLINA
 DEPARTMENT OF TRANSPORTATION
 RALEIGH

**SUPERSTRUCTURE
 STRUCTURAL STEEL
 DETAILS
 UNIT 2**



DRAWN BY : T. FORD DATE : 04/2021
 CHECKED BY : R. FISHER DATE : 05/2021
 DESIGN ENGINEER OF RECORD: R. NELSON DATE : 05/2021

PLANS PREPARED BY:
Gannett Fleming
 Excellence Delivered As Promised

One Glenwood Avenue
 Suite 900
 Raleigh, NC 27603
 (919) 420-7660
 NC Lic. No. F-0270

DOCUMENT NOT CONSIDERED
 FINAL UNLESS ALL
 SIGNATURES COMPLETED

REVISIONS						SHEET NO.
NO.	BY:	DATE:	NO.	BY:	DATE:	S1-28
1			3			TOTAL SHEETS
2			4			125