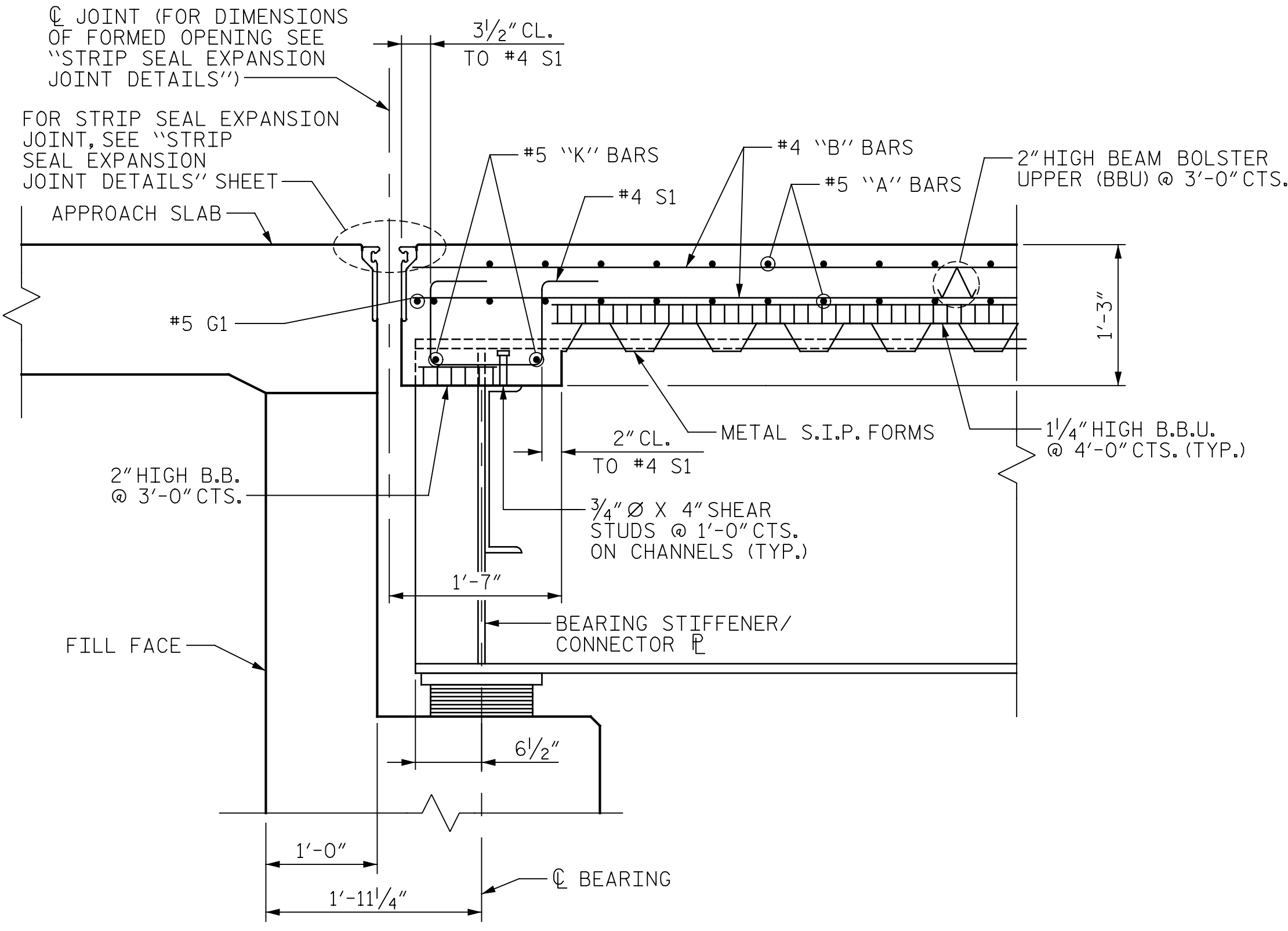
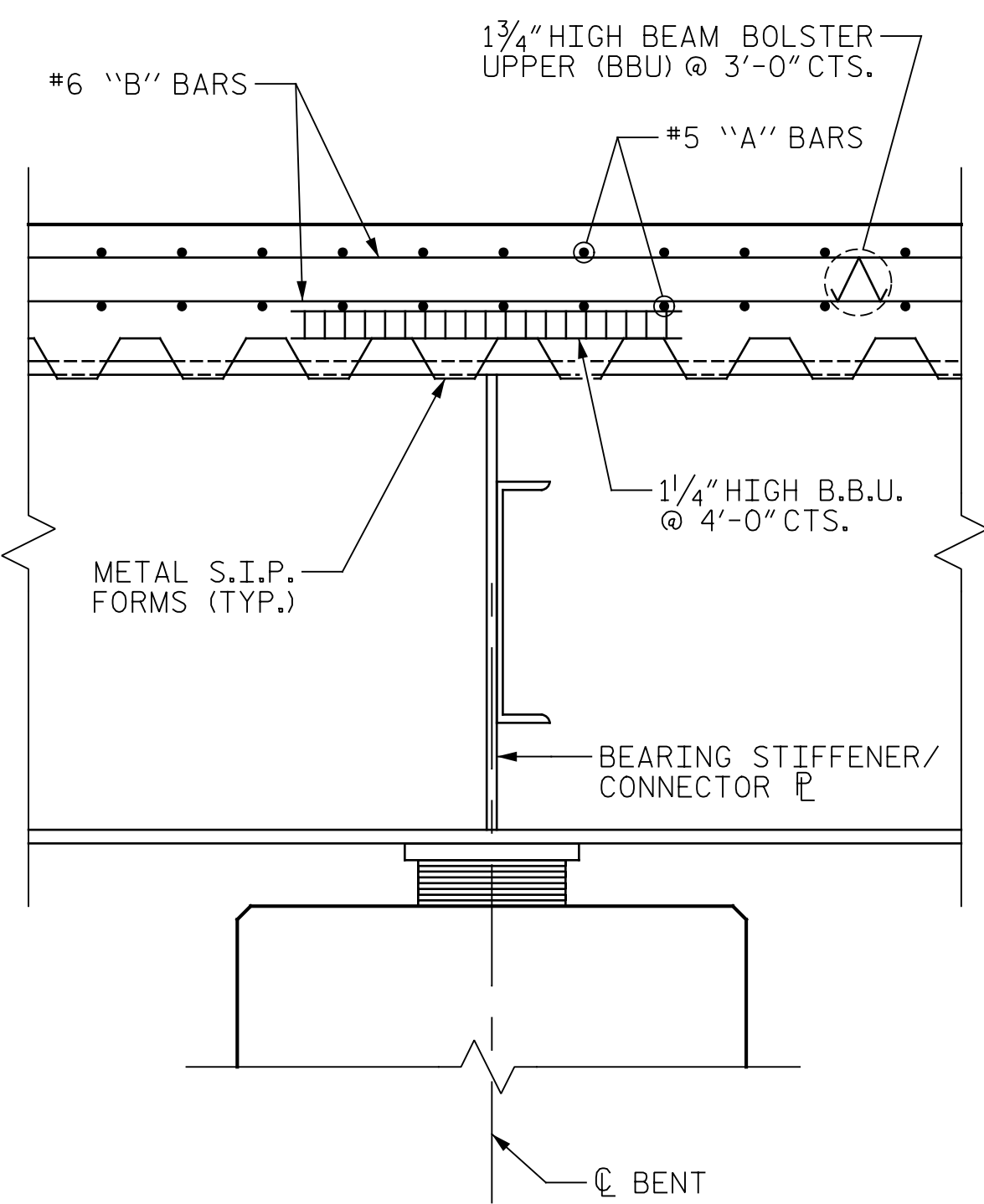


p:\gfn\pw.bentley.com\gfn\Task 010 B-4626\Discipline\Struct\DN\Rowan 3\Archives\Delete\401\_035\_B4626\_SMU\_TS3\_790003\_016 9/2/2021 3:58:41 PM pdf\_color\_gfct\_FS.plt Rowan.pen.tbl



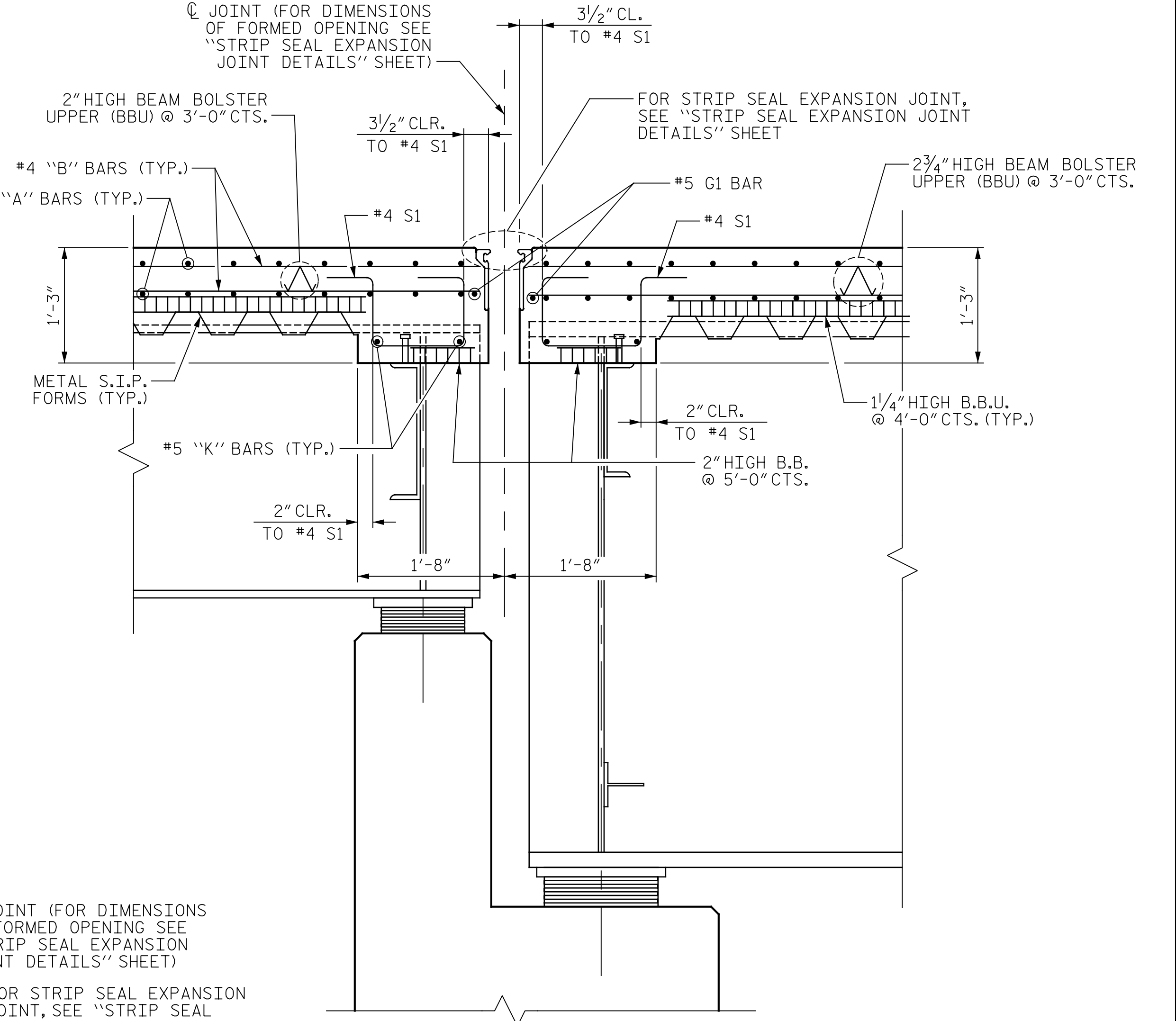
**SECTION A-A**

(SEE "PLAN OF SPANS" SHEETS FOR LOCATION OF SECTION)



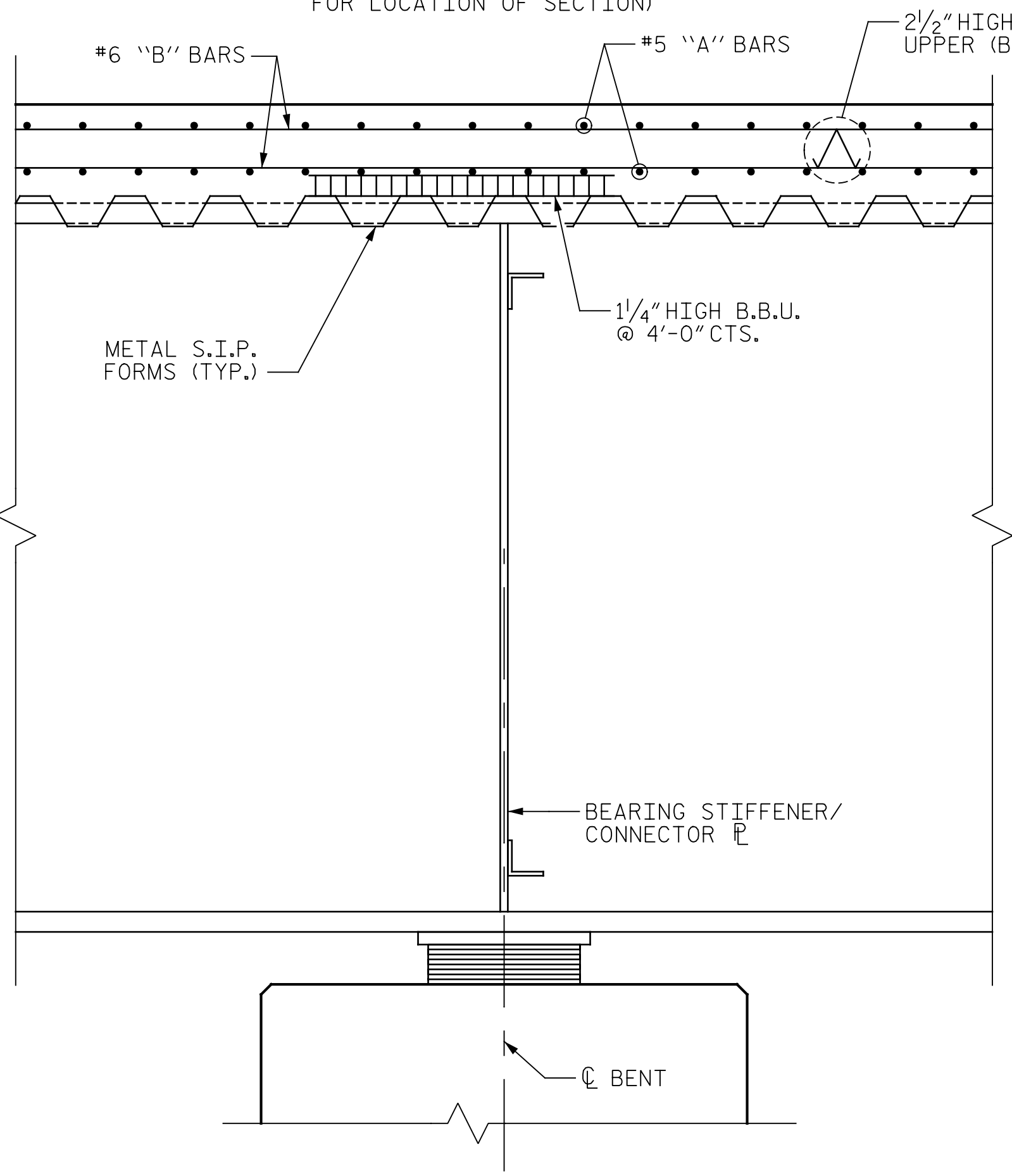
**SECTION B-B**

(SEE "PLAN OF SPANS" SHEETS FOR LOCATION OF SECTION)



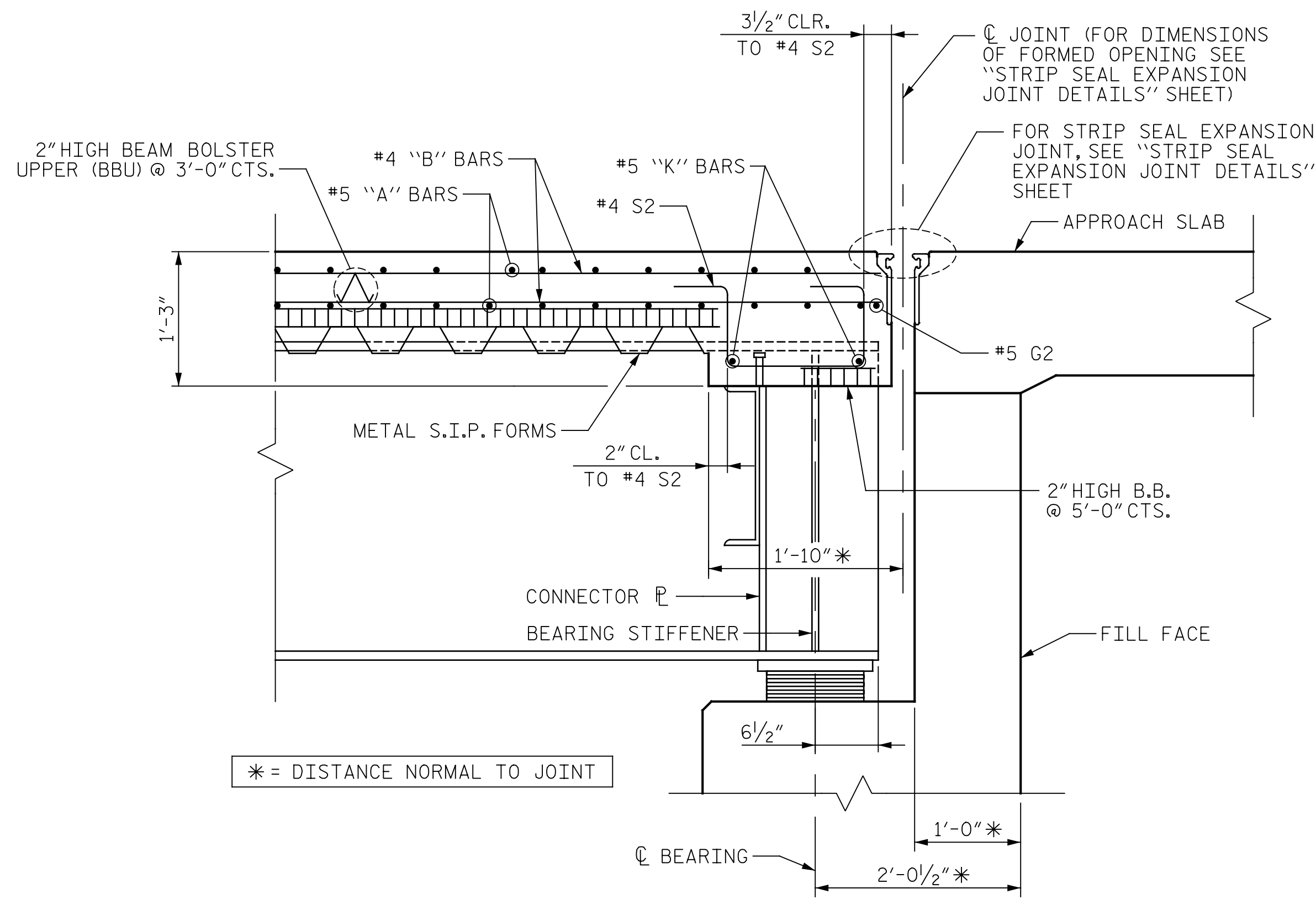
**SECTION C-C**

(SEE "PLAN OF SPANS" SHEETS FOR LOCATION OF SECTION)



**SECTION D-D**

(SEE "PLAN OF SPANS" SHEETS FOR LOCATION OF SECTION)



**SECTION E-E**

(SEE "PLAN OF SPANS" SHEETS FOR LOCATION OF SECTION)

PROJECT NO. B-4626  
STANLY, ROWAN  
AND DAVIDSON COUNTY  
 STATION: 45+22.65 -EBL-

SHEET 3 OF 3

STATE OF NORTH CAROLINA  
 DEPARTMENT OF TRANSPORTATION  
 RALEIGH

**SUPERSTRUCTURE  
 TYPICAL SECTION  
 DETAILS**



DRAWN BY : T. FORD DATE : 05/2020  
 CHECKED BY : R. FISHER DATE : 05/2021  
 DESIGN ENGINEER OF RECORD: R. NELSON DATE : 05/2021

PLANS PREPARED BY:  
**Gannett Fleming**  
 Excellence Delivered As Promised

One Glenwood Avenue  
 Suite 900  
 Raleigh, NC 27603  
 (919) 420-7660  
 NC Lic. No. F-0270

DOCUMENT NOT CONSIDERED  
 FINAL UNLESS ALL  
 SIGNATURES COMPLETED

REVISIONS						SHEET NO.
NO.	BY:	DATE:	NO.	BY:	DATE:	S1-16
1			3			TOTAL SHEETS
2			4			125