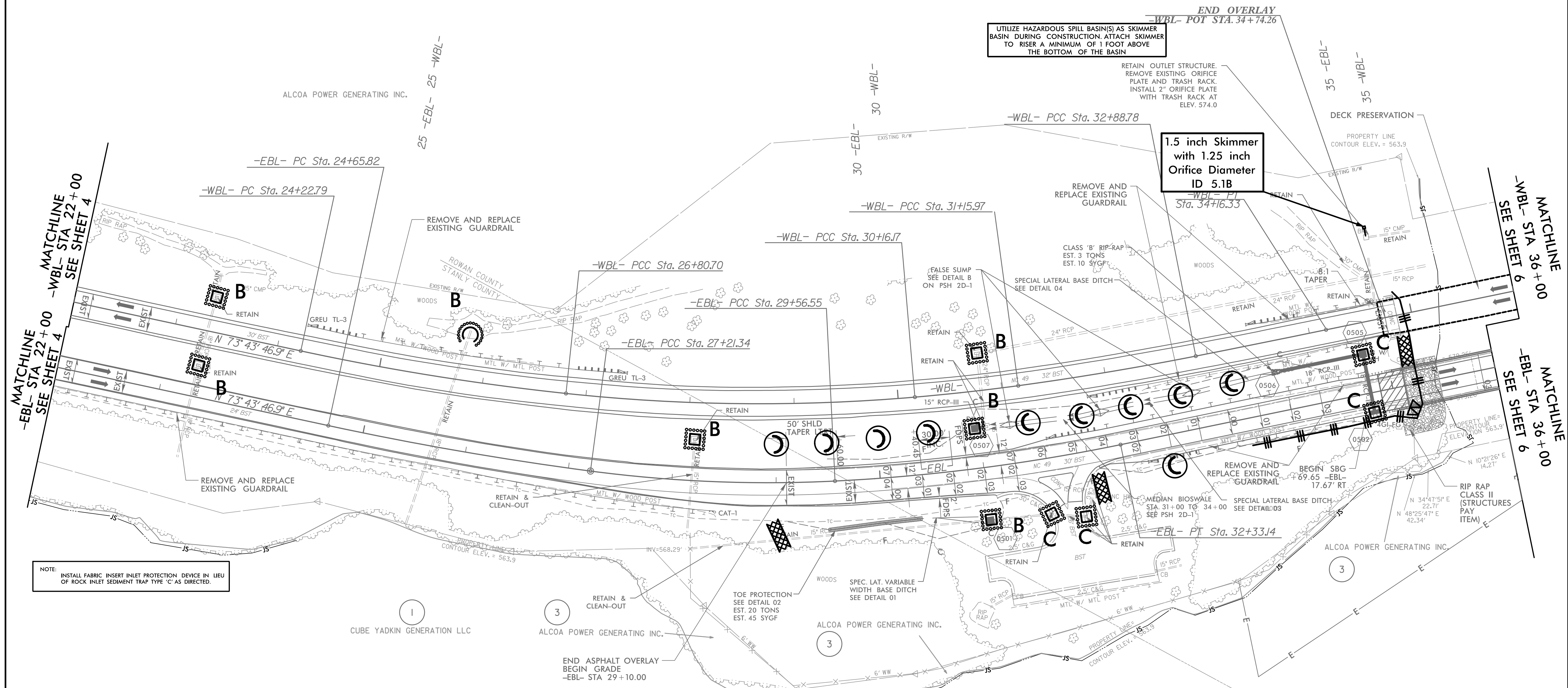
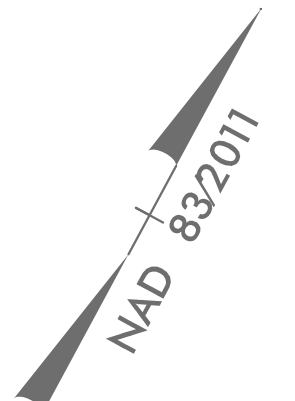
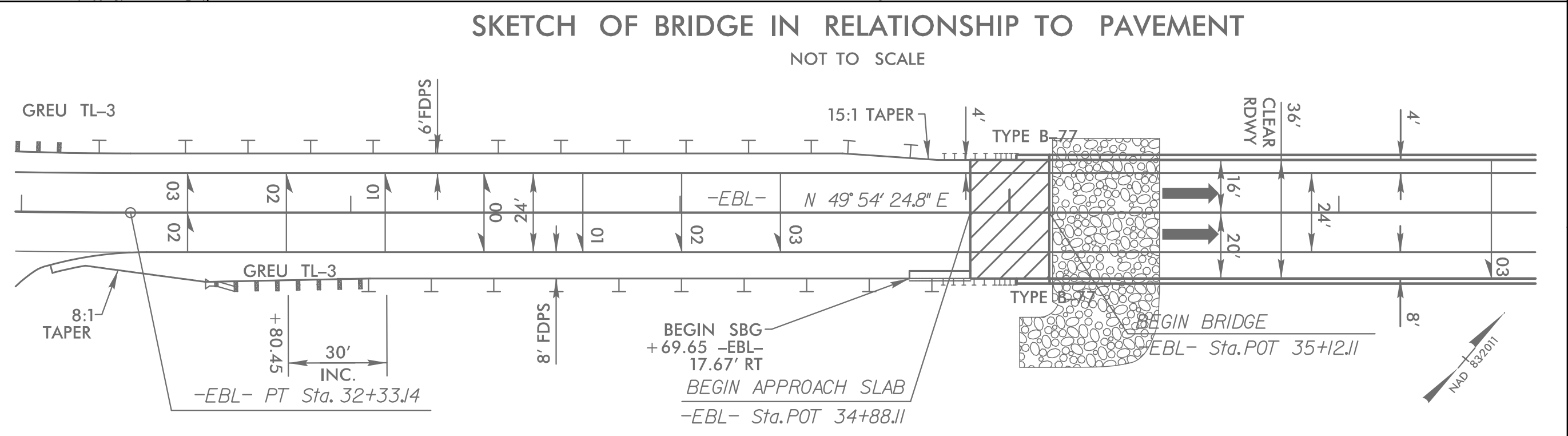
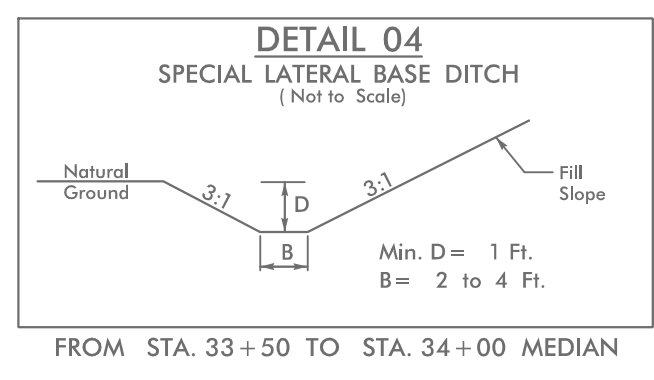
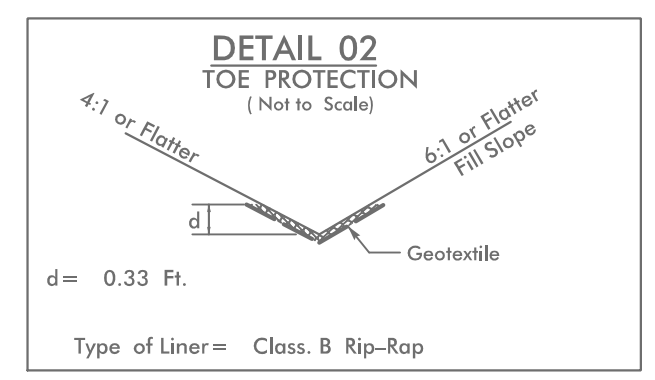
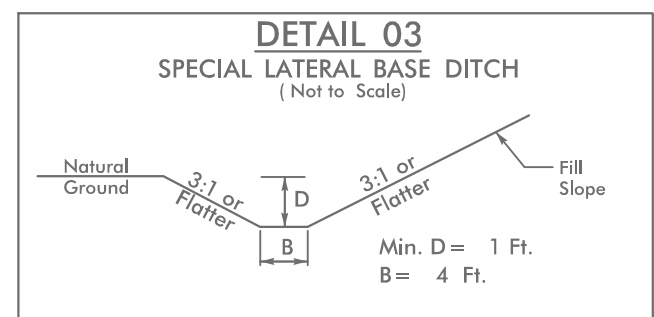
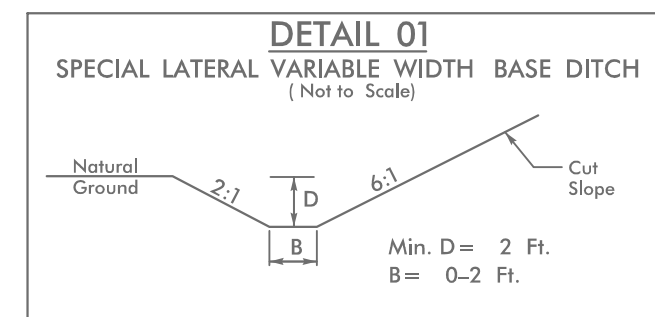


8/17/99

PROJECT REFERENCE NO.	SHEET NO.
B-4626	EC-10/CONST.5
RW SHEET NO.	
ROADWAY DESIGN ENGINEER	HYDRAULICS ENGINEER



NOTE: INSTALL FABRIC INSERT INLET PROTECTION DEVICE IN LIEU OF ROCK INLET SEDIMENT TRAP TYPE 'C' AS DIRECTED.



FOR -EBL- PROFILE, SEE SHEET 9
 FOR -WBL- PROFILE, SEE SHEET 12

FOR STRUCTURE PLANS, SEE SHEET S-1 THRU S-

8/17/2021
 res101gn\B-4626.EC_PSH.dgn
 HNTB