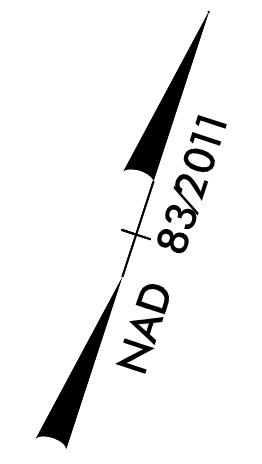


8/17/99

PROJECT REFERENCE NO. B-4626		SHEET NO. 7
RW SHEET NO.		
ROADWAY DESIGN ENGINEER	HYDRAULICS ENGINEER	
DOCUMENT NOT CONSIDERED FINAL UNLESS ALL SIGNATURES COMPLETED		



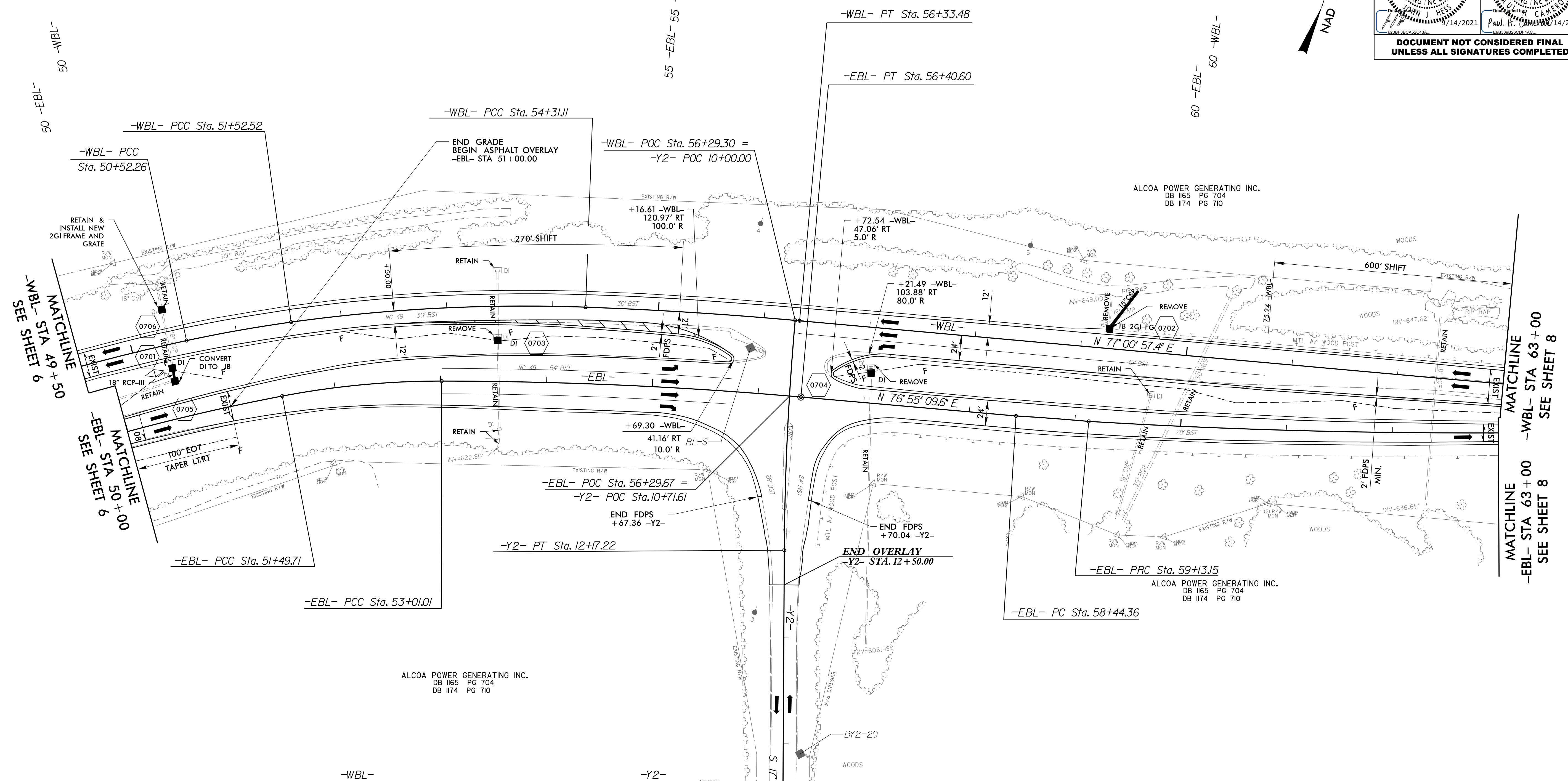
2

ALCOA POWER GENERATING INC.
DB 1165 PG 704
DB 1174 PG 710

ALCOA POWER GENERATING INC.
DB 1165 PG 704
DB 1174 PG 710

ALCOA POWER GENERATING INC.
DB 1165 PG 704
DB 1174 PG 710

ALCOA POWER GENERATING INC.
DB 1165 PG 704
DB 1174 PG 710



MATCHLINE
-WBL- STA 49 + 50
SEE SHEET 6

MATCHLINE
-EBL- STA 50 + 00
SEE SHEET 6

MATCHLINE
-WBL- STA 63 + 00
SEE SHEET 8

MATCHLINE
-EBL- STA 63 + 00
SEE SHEET 8

REVISIONS

-WBL-		-Y2-	
PI Sta 51+02.41	PI Sta 52+92.17	PI Sta 55+32.32	PI Sta 11+08.67
$\Delta = 4' 15' 18.2''$ (RT)	$\Delta = 9' 58' 34.1''$ (RT)	$\Delta = 3' 07' 00.2''$ (RT)	$\Delta = 4' 47' 12.6''$ (LT)
D = 4' 14' 38.9"	D = 3' 34' 51.6"	D = 1' 32' 24.4"	D = 2' 12' 13.3"
L = 100.26'	L = 278.59'	L = 202.37'	L = 217.22'
T = 50.15'	T = 139.65'	T = 101.21'	T = 108.67'
R = 1,350.00'	R = 1,600.00'	R = 3,720.27'	R = 2,600.00'

-EBL-				
PI Sta 50+27.67	PI Sta 52+25.56	PI Sta 54+70.84	PI Sta 58+78.63	PI Sta 61+54.30
$\Delta = 6' 59' 59.5''$ (RT)	$\Delta = 10' 50' 09.3''$ (RT)	$\Delta = 4' 59' 15.0''$ (RT)	$\Delta = 1' 34' 36.2''$ (RT)	$\Delta = 4' 36' 19.3''$ (LT)
D = 2' 51' 53.2"	D = 7' 09' 43.1"	D = 1' 28' 08.8"	D = 2' 17' 30.6"	D = 0' 57' 17.7"
L = 244.34'	L = 151.30'	L = 339.49'	L = 68.80'	L = 482.27'
T = 122.32'	T = 75.88'	T = 169.85'	T = 34.40'	T = 241.27'
R = 2,000.00'	R = 800.00'	R = 3,900.00'	R = 2,500.00'	R = 6,000.00'

FOR -EBL- PROFILE, SEE SHEET 10
FOR -WBL- PROFILE, SEE SHEET 13
-Y2- ALIGNMENT SHOWN FOR INFORMATION ONLY

14-SEP-2021 11:38
V:\Roadway\Projects\B4626\RDY_PSH7.dgn
HNTB