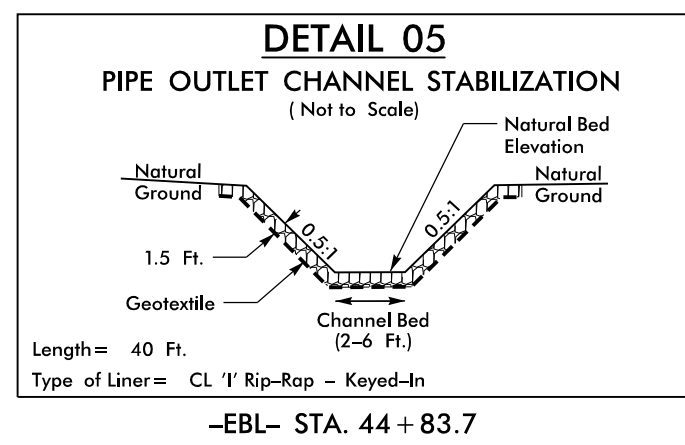
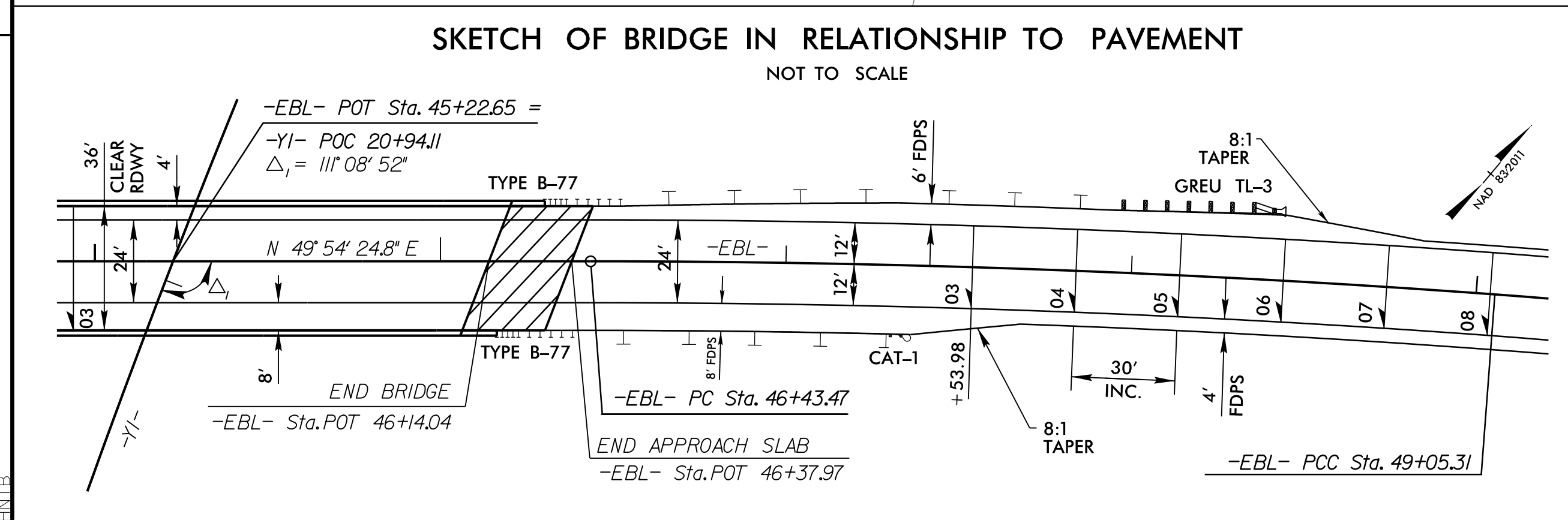
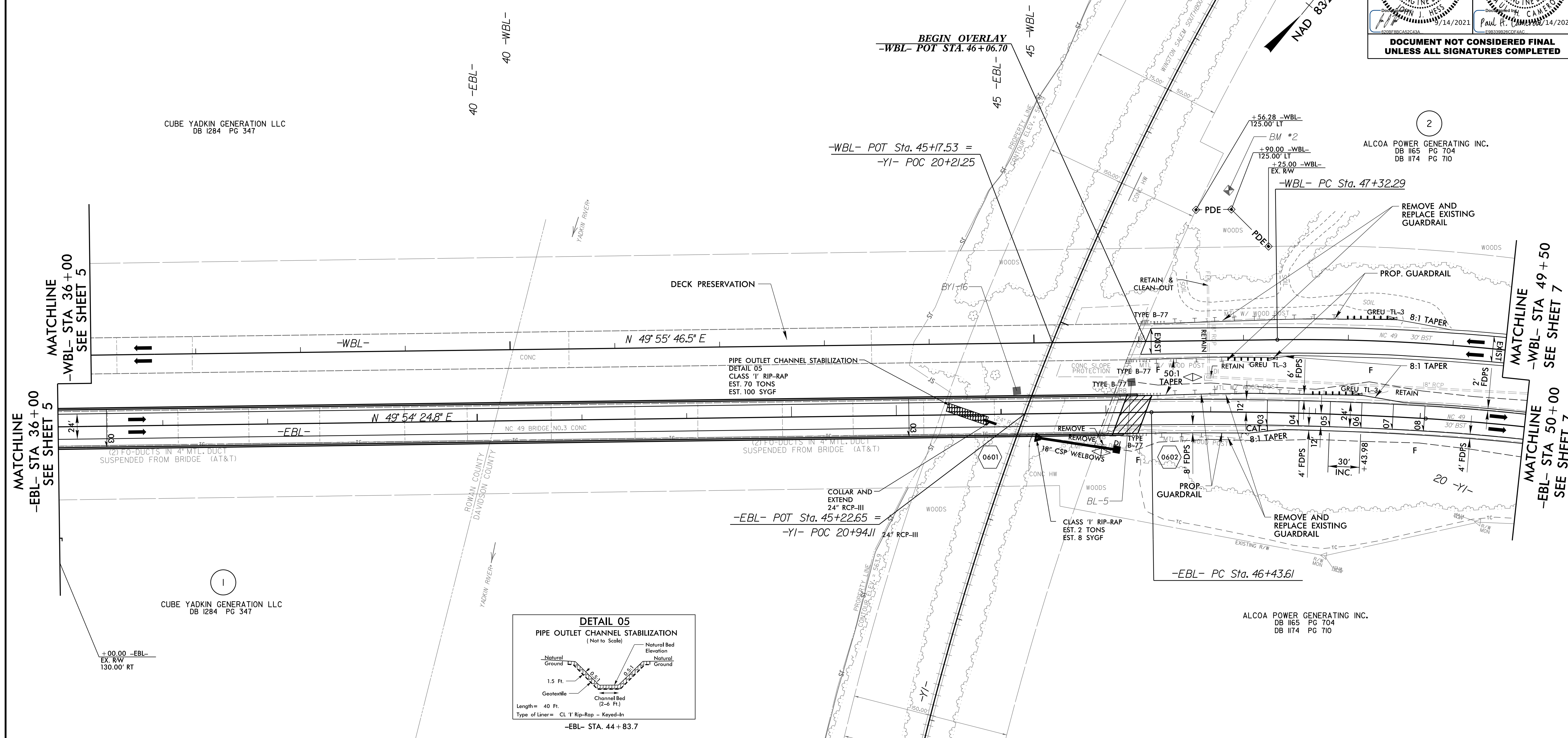


8.17.19

PROJECT REFERENCE NO. B-4626	SHEET NO. 6
RW SHEET NO.	
ROADWAY DESIGN ENGINEER SEAL 042452	HYDRAULICS ENGINEER SEAL 040801
DATE: 9/14/2021	DATE: 9/14/2021
DOCUMENT NOT CONSIDERED FINAL UNLESS ALL SIGNATURES COMPLETED	

-EBL-	-WBL-	-YI-
PI Sta 47+74.47 Δ = 4° 11' 21.0" (RT) D = 1° 35' 59.1" L = 261.86' T = 130.99' R = 3,581.52'	PI Sta 48+92.67 Δ = 9° 48' 13.6" (RT) D = 3° 03' 50.2" L = 319.97' T = 160.38' R = 1,870.00'	PI Sta 20+18.62 Δ = 39° 08' 15.2" (LT) D = 2° 00' 01.0" T = 1,018.20 L = 1,956.60 R = 2,864.38



FOR -EBL- PROFILE, SEE SHEETS 9 & 10
 FOR -WBL- PROFILE, SEE SHEETS 12 & 13
 FOR STRUCTURE PLANS, SEE SHEETS S1-1 THRU S2-22
 -YI- ALIGNMENT SHOWN FOR INFORMATION ONLY

REVISIONS

14-SEP-2021 12:28 P:\Drawings\B4626_R01_PSH6.dgn

CUBE YADKIN GENERATION LLC
DB 1284 PG 347

CUBE YADKIN GENERATION LLC
DB 1284 PG 347

ALCOA POWER GENERATING INC.
DB 1165 PG 704
DB 1174 PG 710

ALCOA POWER GENERATING INC.
DB 1165 PG 704
DB 1174 PG 710