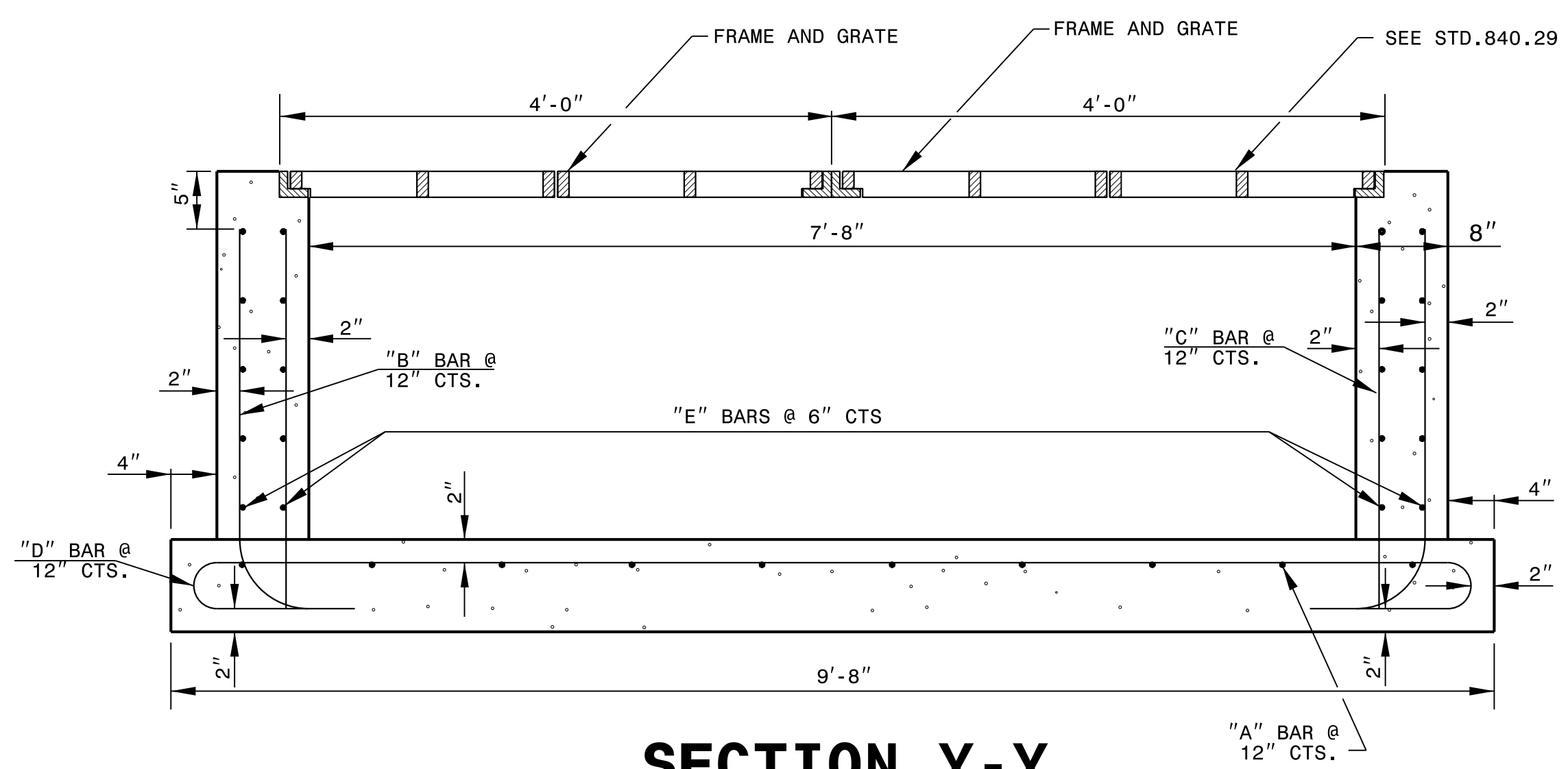
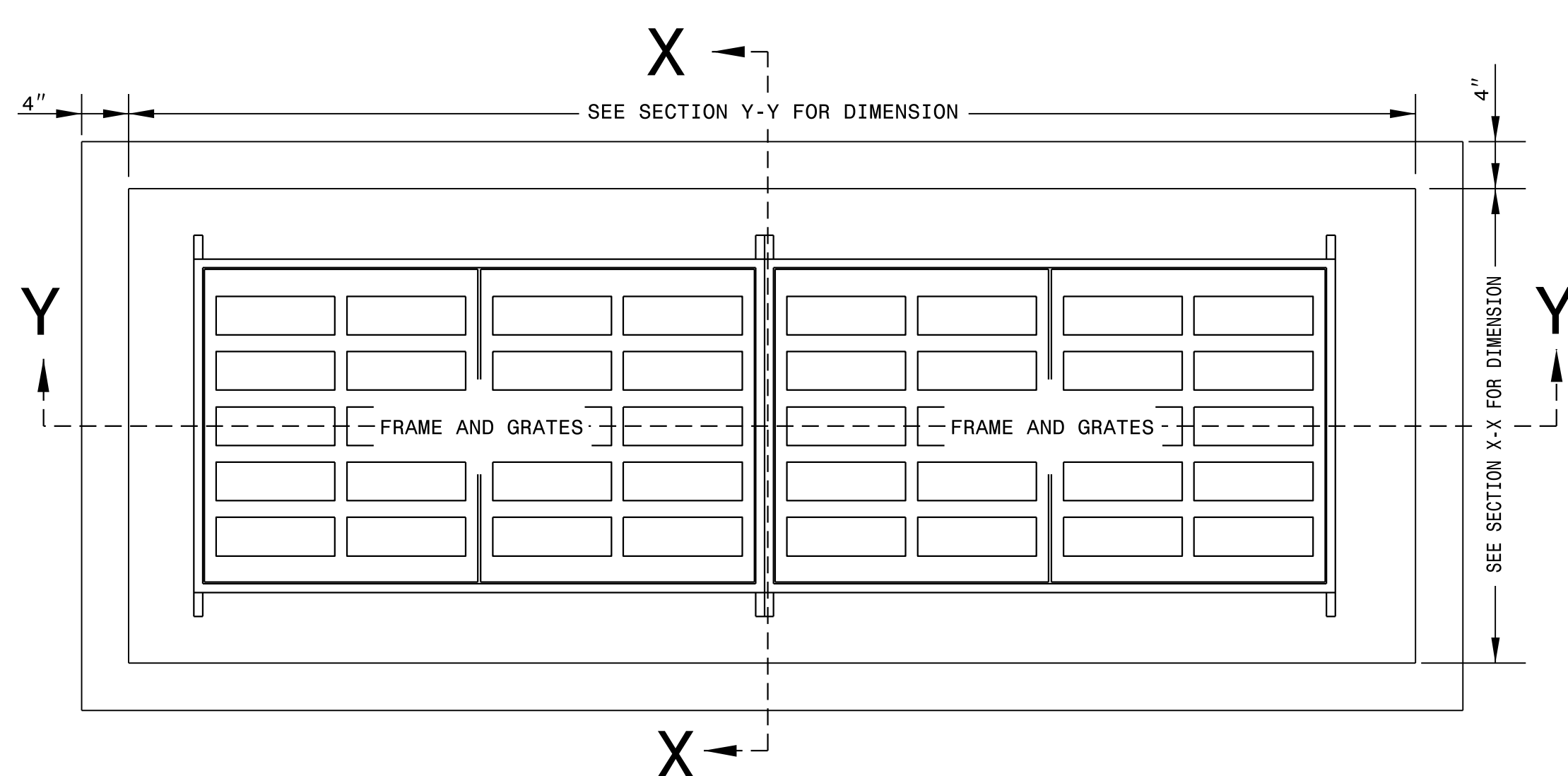


SECTION X-X

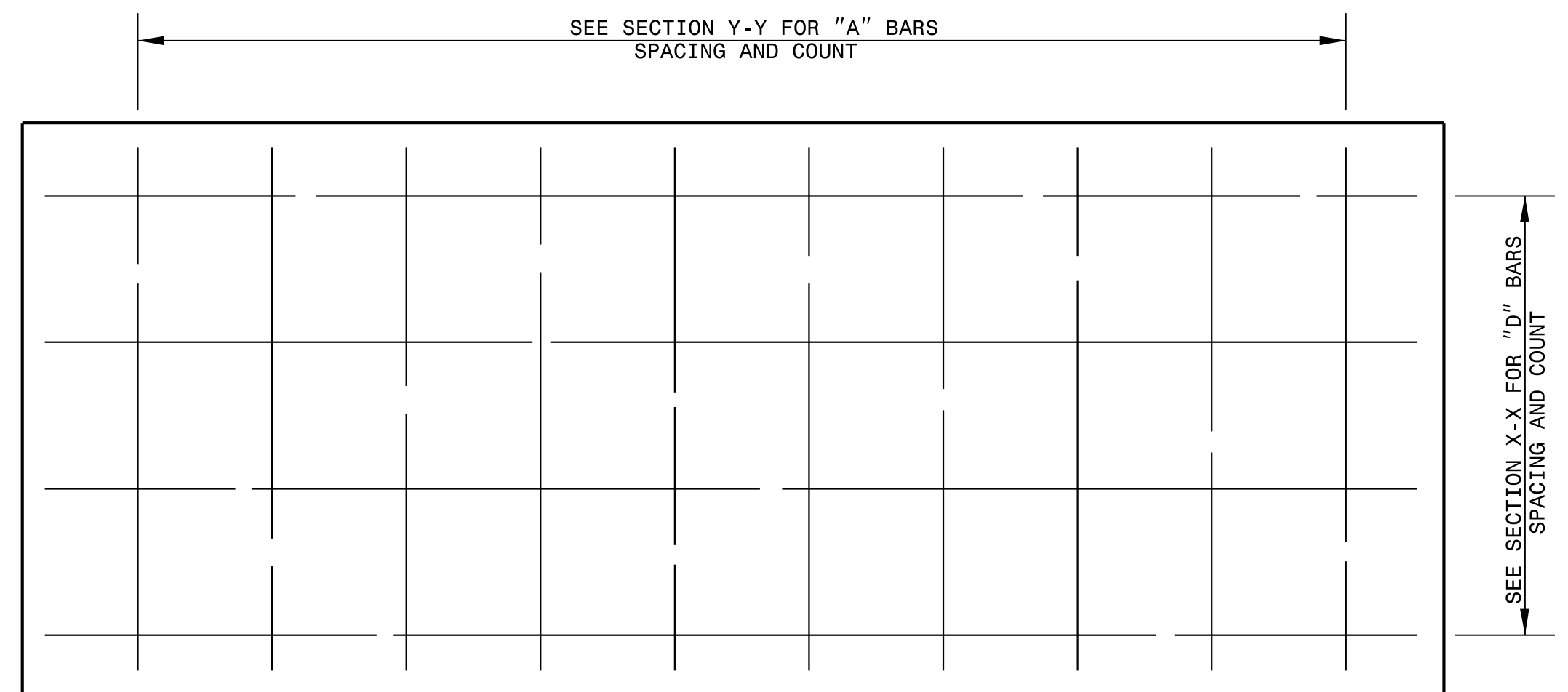


SECTION Y-Y

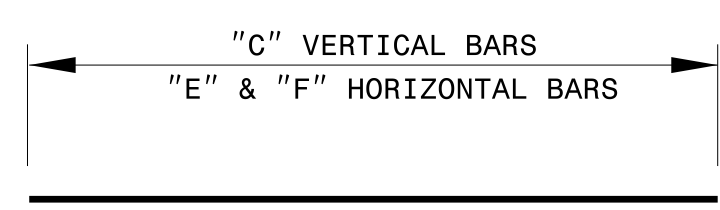
GENERAL NOTES:
 -ALL EXPOSED CONCRETE CORNERS SHALL BE CHAMFERED 1".
 -FORMS SHALL BE USED TO CONSTRUCT THE BOTTOM SLAB.
 -IF PIPES ARE SET IN THE BASE SHALL FOLLOW CONSTRUCTION PROCEDURE SHOWN BY STD. DWG. 840.00.
 -PRECAST UNITS MADE OF CLASS "AA" CONCRETE MAY BE USED IN LIEU OF BRICK MASONRY CONSTRUCTION.
 -REINFORCING STEEL COST SHALL BE INCLUSIVE IN THE UNIT OR PER METER BID PRICE FOR "MASONRY DRAINAGE STRUCTURE".
 -REFERENCE STD. DWG. 840.25 FOR FRAME ANCHORAGE.
 -DROP INLETS OVER 3'-6" DEEP SHALL BE PROVIDED WITH STEPS AS DIRECTED BY STD. DWG. 840.66.
 -FRAME AND GRATES SHALL BE SEPARATE CONTRACT ITEM.
 -HORIZONTAL AND VERTICAL DIMENSION MAY BE ADJUSTED AS THE FIELD CONDITIONS AND/OR ALTERNATE DESIGN REQUIRE.
 -MAXIMUM HEIGHT FOR THIS STRUCTURE SHALL BE 15'.
 -ALL ADJUSTMENTS ARE TO BE MADE AS DIRECTED BY THE ENGINEER.
 -DEPTH OF STEEL GRATE WILL REQUIRE DEEPER SEAT ALONG SHORT WALLS.



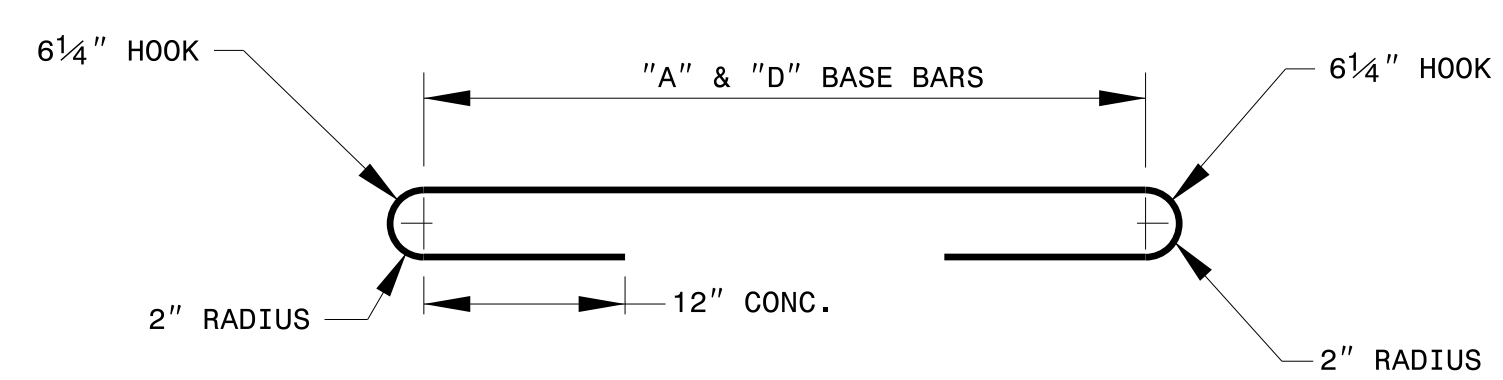
PLAN



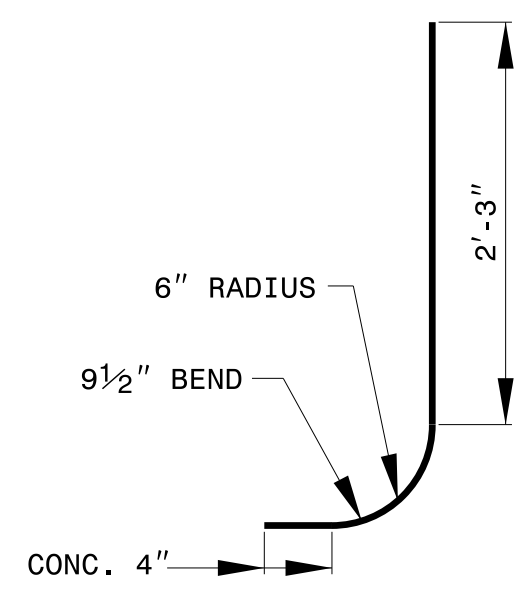
PLAN OF BASE



STRAIGHT BARS



BASE BARS



CORNER BARS

BILL OF MATERIALS				
COMMON		CONCRETE ALT.		
BAR	SIZE	LENGTH	QUANTITY	WEIGHT
A	#5	6'-4 1/2"	10	67
B	#5	3'-4 1/2"	24	84
C	#5	2'-8"	24	67
D	#5	12'-6"	4	22
E	#5	3'-0"	20	62
F	#5	8'-6"	20	179
REINF. STEEL (TOTAL WEIGHT LBS.)				481
CONCRETE IN BASE (CU.YDS.)				0.93
CONCRETE IN WALLS (CU.YDS.)				1.42
CONCRETE TOTAL (CU.YDS.)				2.35
CONC. CU.YDS. PER WALL/FOOT OF HEIGHT				1.74
LBS. OF REINF. STEEL IN WALL/FOOT OF HEIGHT				494



DocuSigned by:
 J. S. Howerton
 9/13/2021

CONTRACT STANDARDS AND DEVELOPMENT UNIT
 Office 919-707-6950 FAX 919-250-4119

TRAFFIC BEARING 4GI

ORIGINAL BY: _____ DATE: _____
 MODIFIED BY: rnbritt DATE: 6-15-16
 CHECKED BY: _____ DATE: _____
 FILE SPEC: details/nbritt/english/urban./u2810ctb4gi.dgn

DOCUMENT NOT CONSIDERED FINAL
 UNLESS ALL SIGNATURES COMPLETED