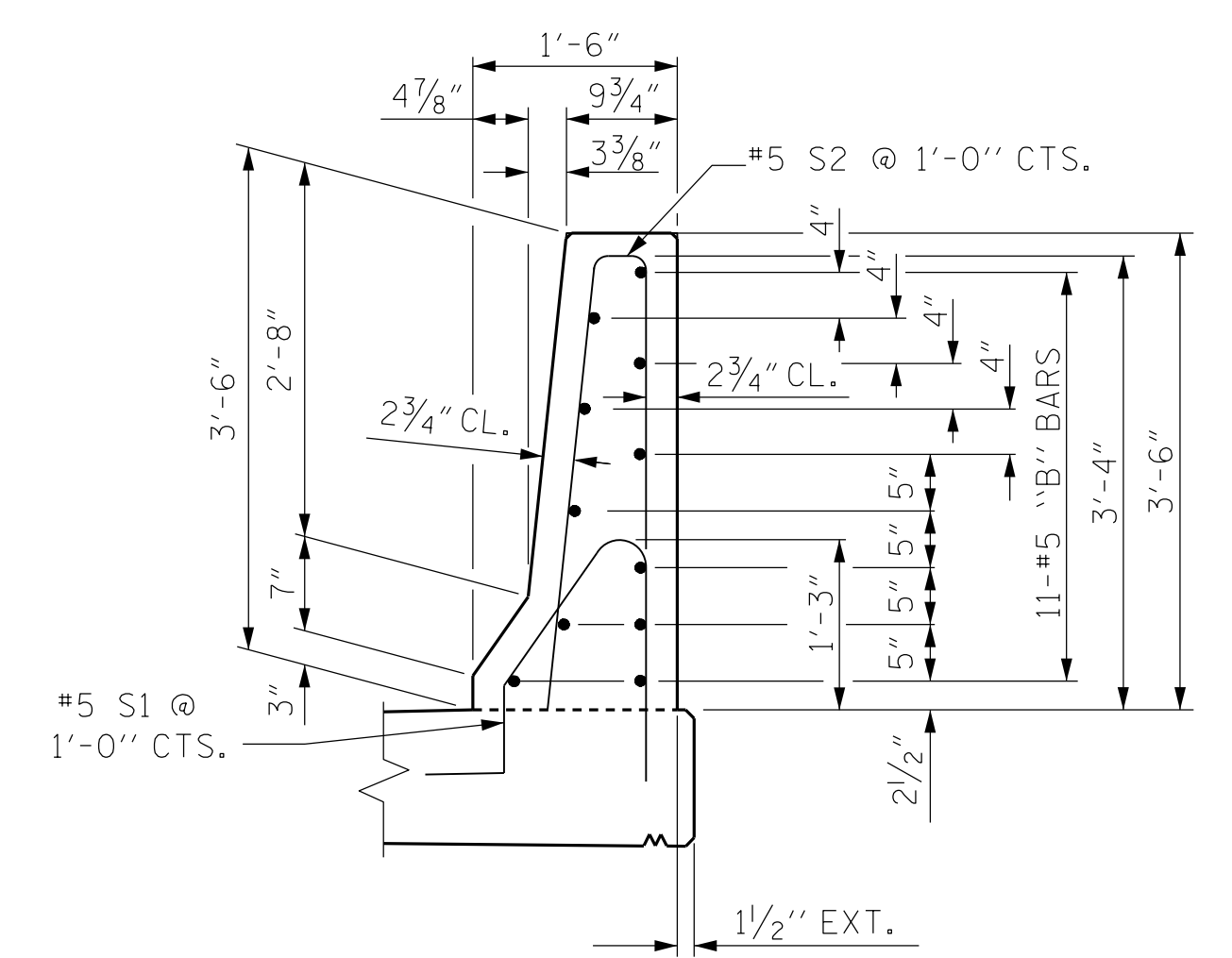
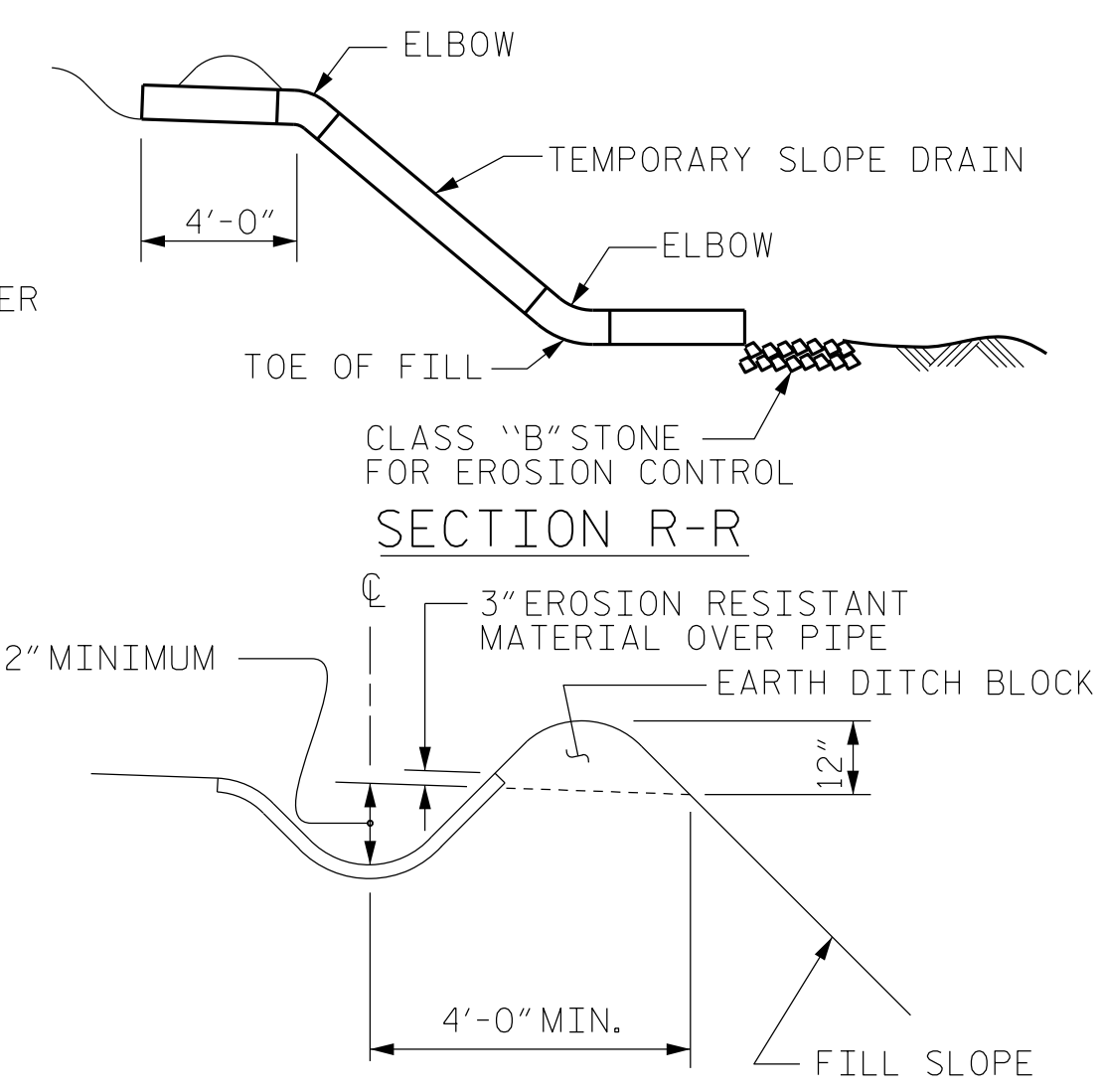
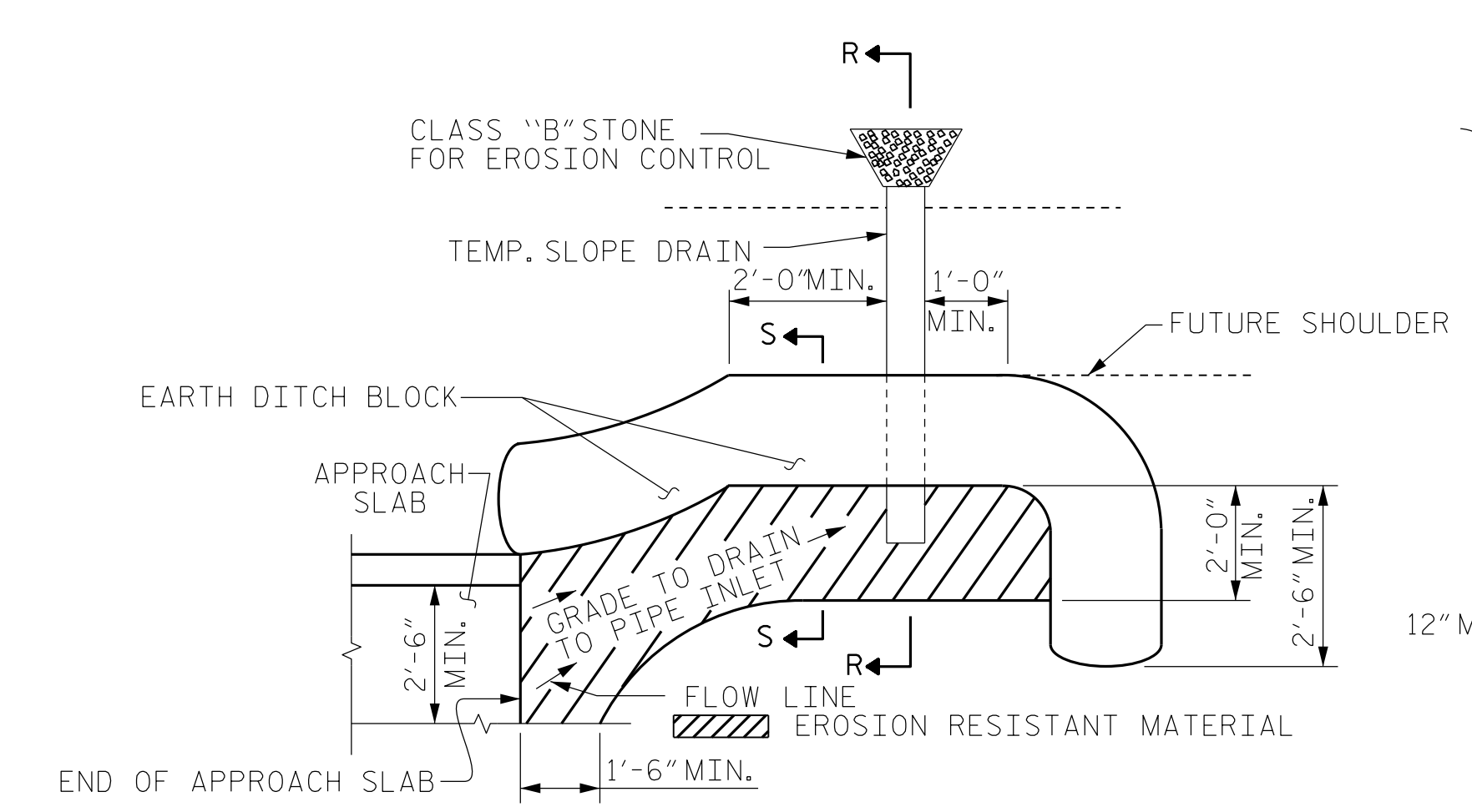


PLAN @ END BENT 1 PLAN @ END BENT 2

PLAN OF BARRIER RAIL



SECTION THRU RAIL



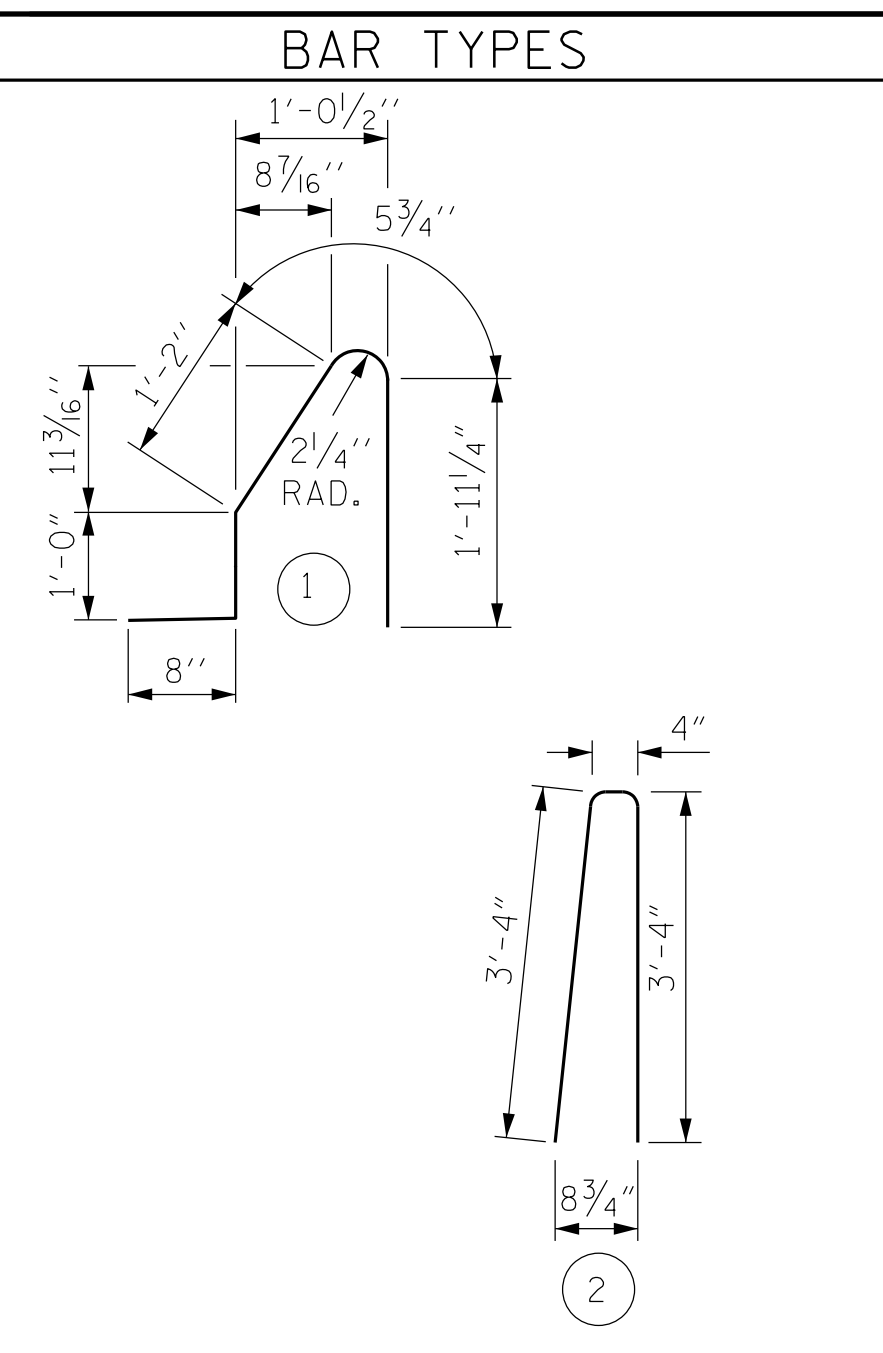
SECTION S-S

TEMPORARY BERM AND SLOPE DRAIN DETAILS

(TO BE USED WHEN SHOULDER BERM GUTTER IS REQUIRED)

DRAWN BY : JAE DATE : 8/21
 CHECKED BY : ZHB DATE : 8/21
 DESIGN ENGINEER OF RECORD: MTP DATE : 8/21

*****SYSTEM TIME*****
 *****DCN*****
 *****USERNAME*****



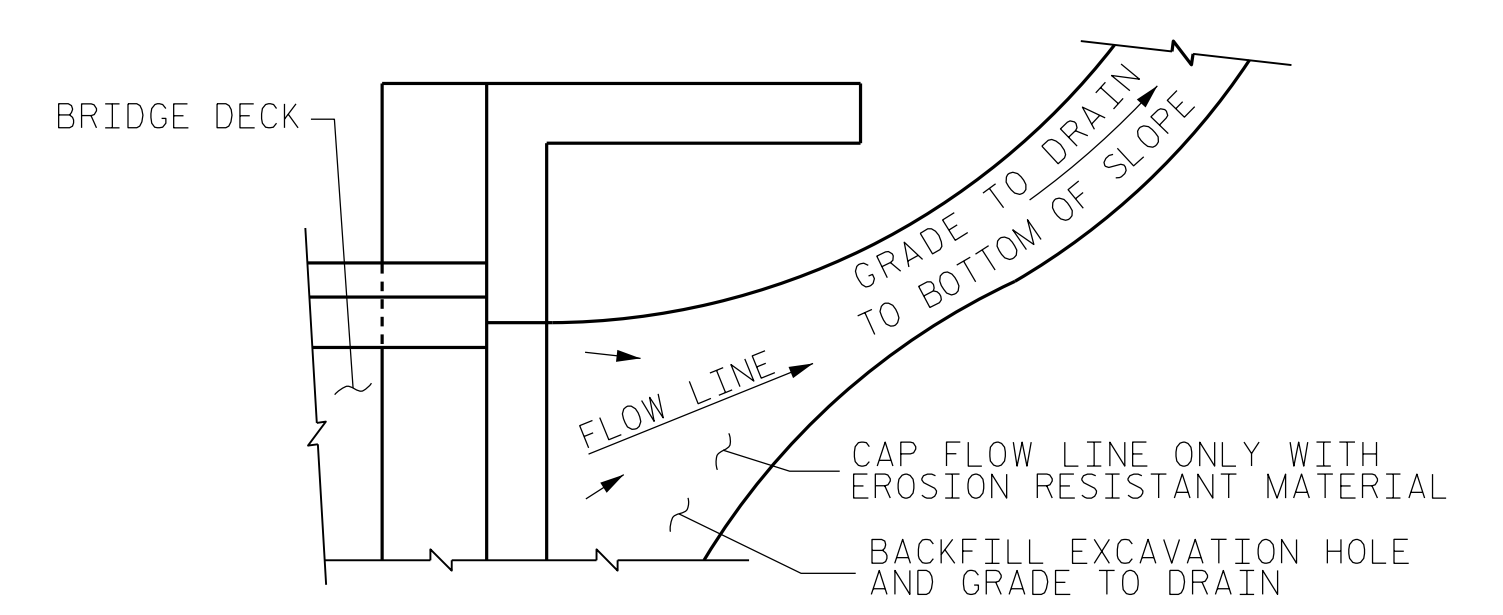
ALL BAR DIMENSIONS ARE OUT TO OUT

BILL OF MATERIAL

FOR CONCRETE BARRIER RAIL ONLY

BAR	NO.	SIZE	TYPE	LENGTH	WEIGHT
* B1	44	#5	STR.	24'-6"	1124
* S1	100	#5	1	5'-3"	548
* S2	100	#5	2	7'-0"	730

* EPOXY COATED REINFORCING STEEL	2402 LBS.
CLASS AA CONCRETE	13.6 CU. YDS.
CONCRETE BARRIER RAIL	100 LIN. FT.



NOTE: IF THE APPROACH SLAB IS NOT CONSTRUCTED IMMEDIATELY AFTER THE BACKFILLING OF THE END BENT EXCAVATION, GRADE TO DRAIN TO THE BOTTOM OF THE SLOPE AND PROVIDE EROSION RESISTANT MATERIAL, SUCH AS FIBERGLASS ROVING OR AS DIRECTED BY THE ENGINEER TO PREVENT SOIL EROSION AND TO PROTECT THE AREA ADJACENT TO THE STRUCTURE. THE CONTRACTOR WILL BE REQUIRED TO REMOVE THESE MATERIALS PRIOR TO CONSTRUCTION OF THE APPROACH SLAB.

TEMPORARY DRAINAGE DETAIL

PROJECT NO. R-5737
 DAVIDSON COUNTY
 STATION: 61+02.86 -L-
 17+04.85 -Y1-
 SHEET 2 OF 2

Dewberry
 2610 WYCLIFF ROAD
 SUITE 410
 RALEIGH, NC 27607
 PHONE: 919.881.9939
 NC COA No. F-0929

NORTH CAROLINA PROFESSIONAL ENGINEER
 SEAL 030046
 ENGINEER MATTHEW PAYNE
 Documented by Matthew Payne
 EYC3056959F484
 9/14/2021

STATE OF NORTH CAROLINA
 DEPARTMENT OF TRANSPORTATION
 RALEIGH
 STANDARD
 BRIDGE APPROACH SLAB DETAILS
 (RIGHT BRIDGE)

REVISIONS						SHEET NO.	
NO.	BY:	DATE:	NO.	BY:	DATE:	S2-25	
1			3			TOTAL SHEETS	25
2			4			DOCUMENT NOT CONSIDERED FINAL UNLESS ALL SIGNATURES COMPLETED	