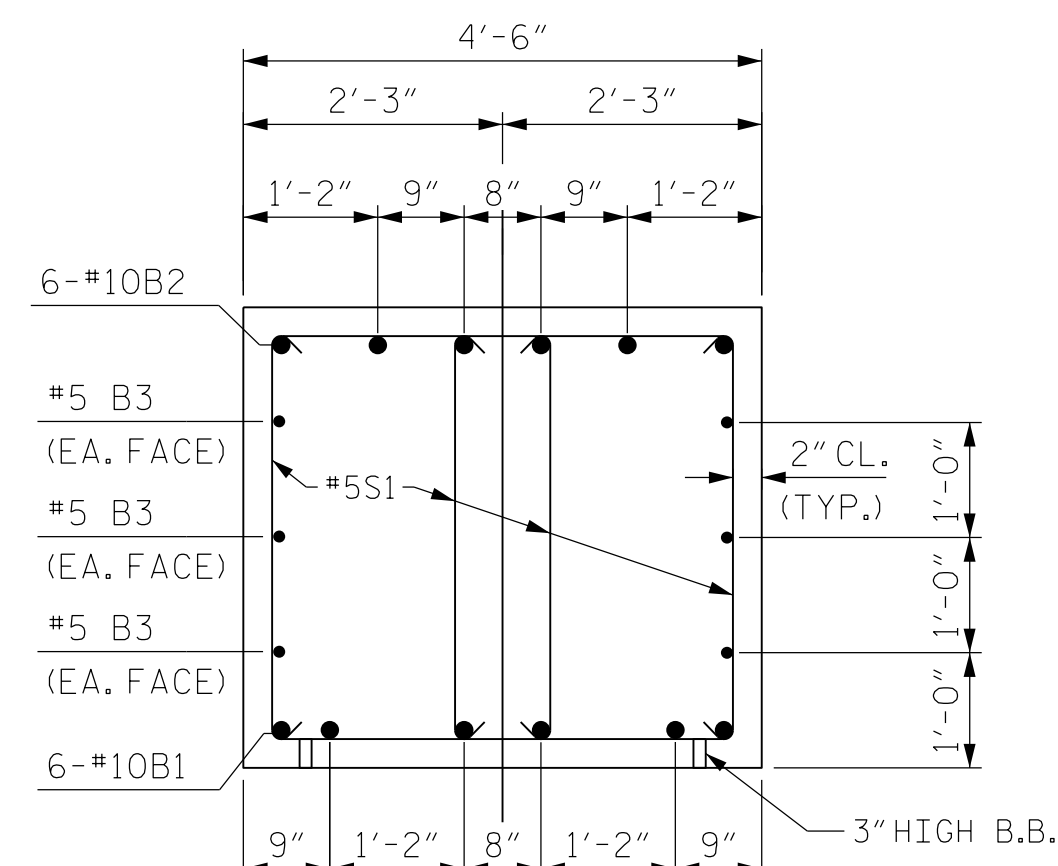
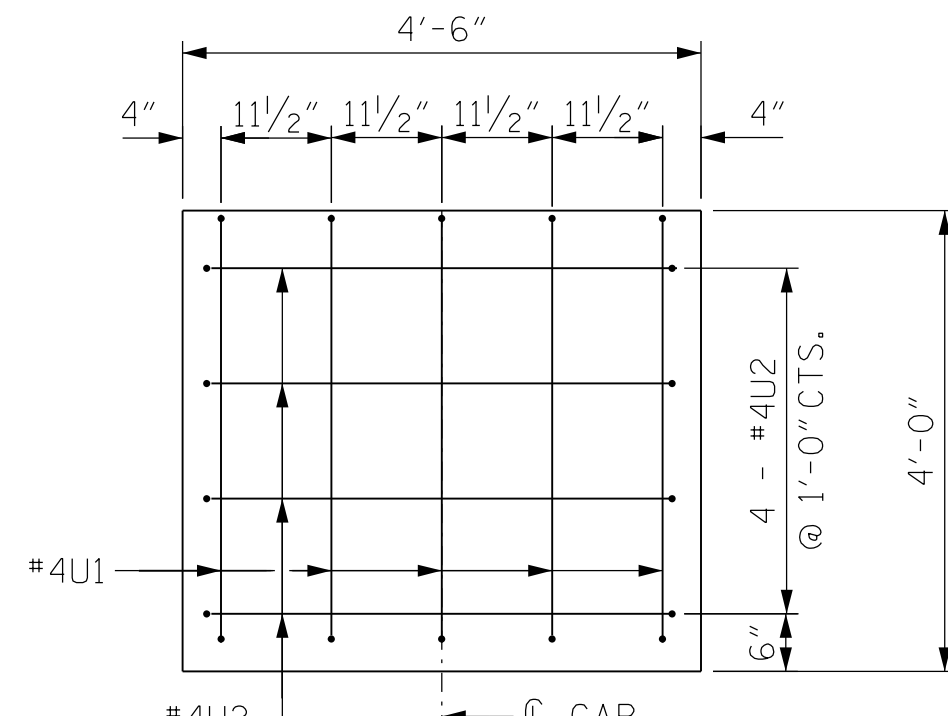


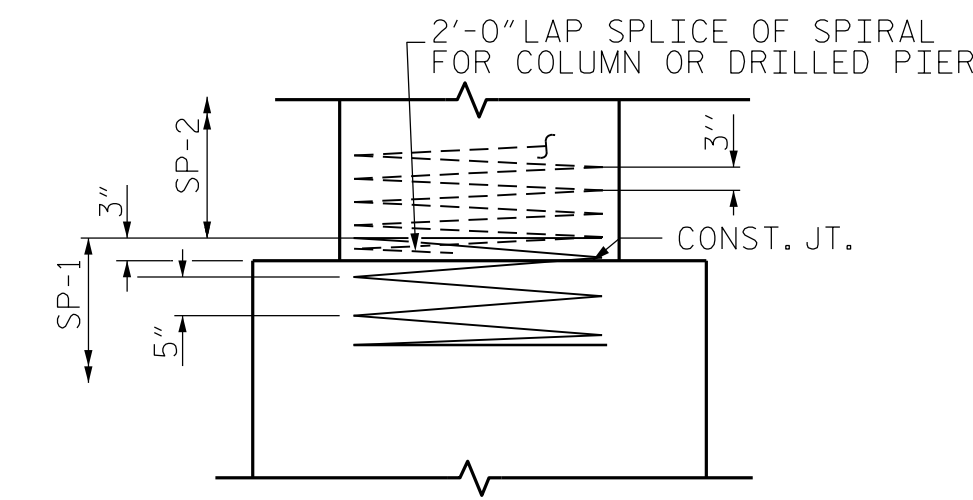
END ELEVATION



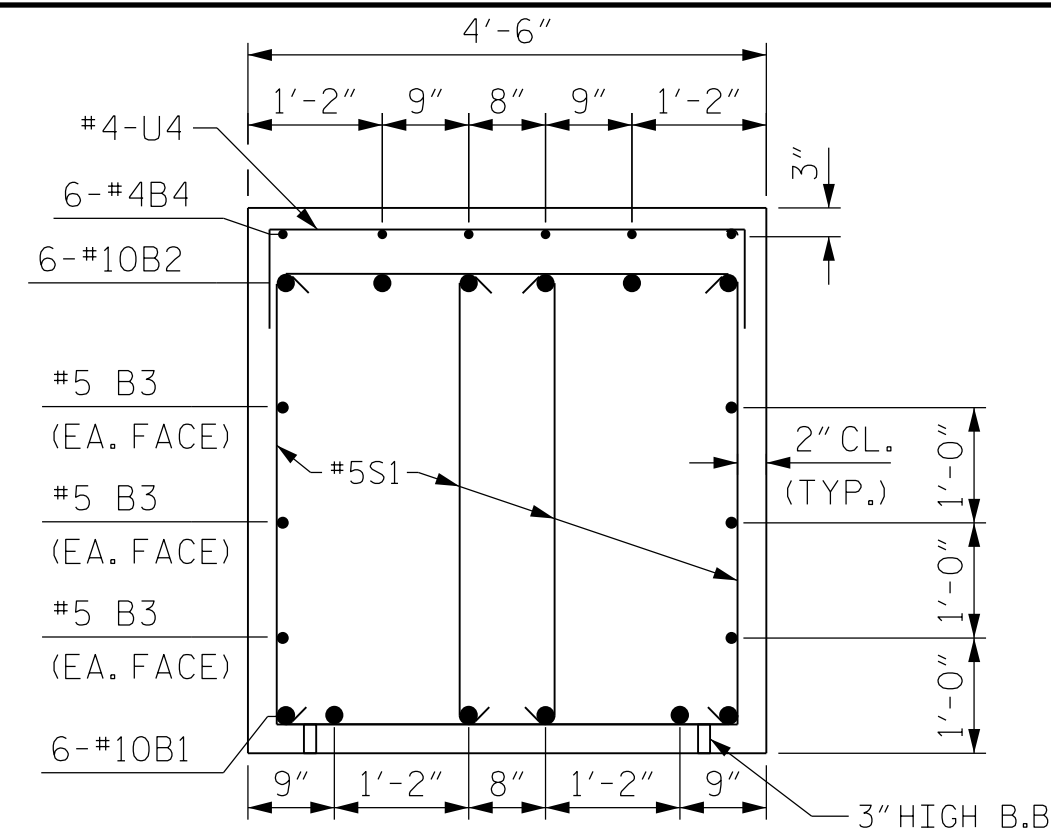
SECTION A-A



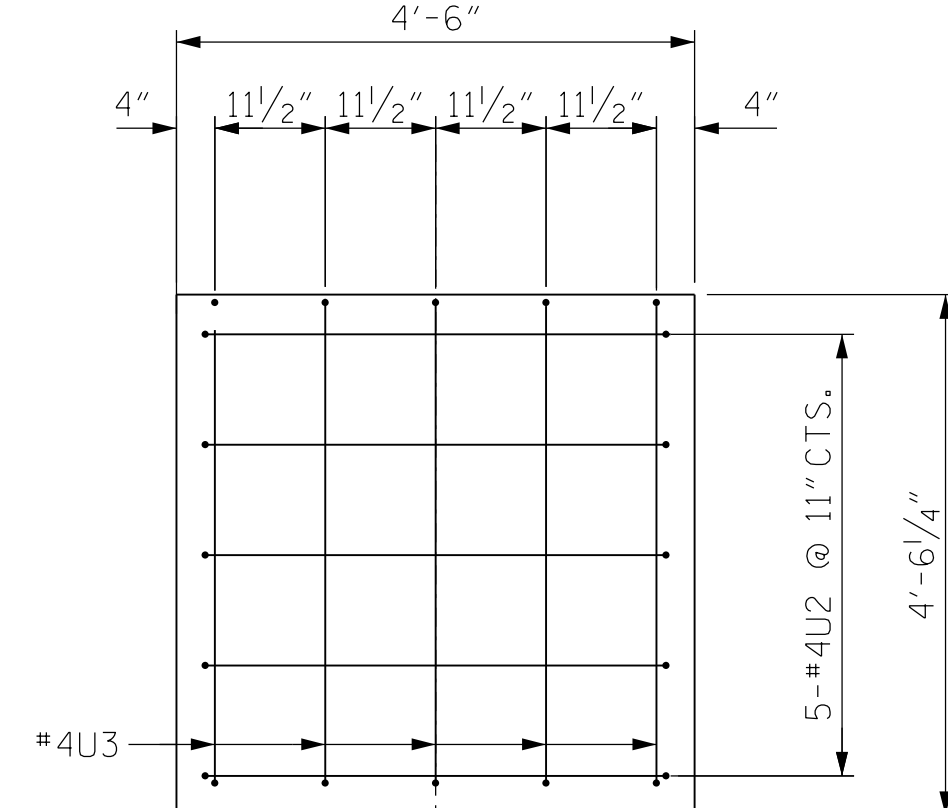
SECTION D-D



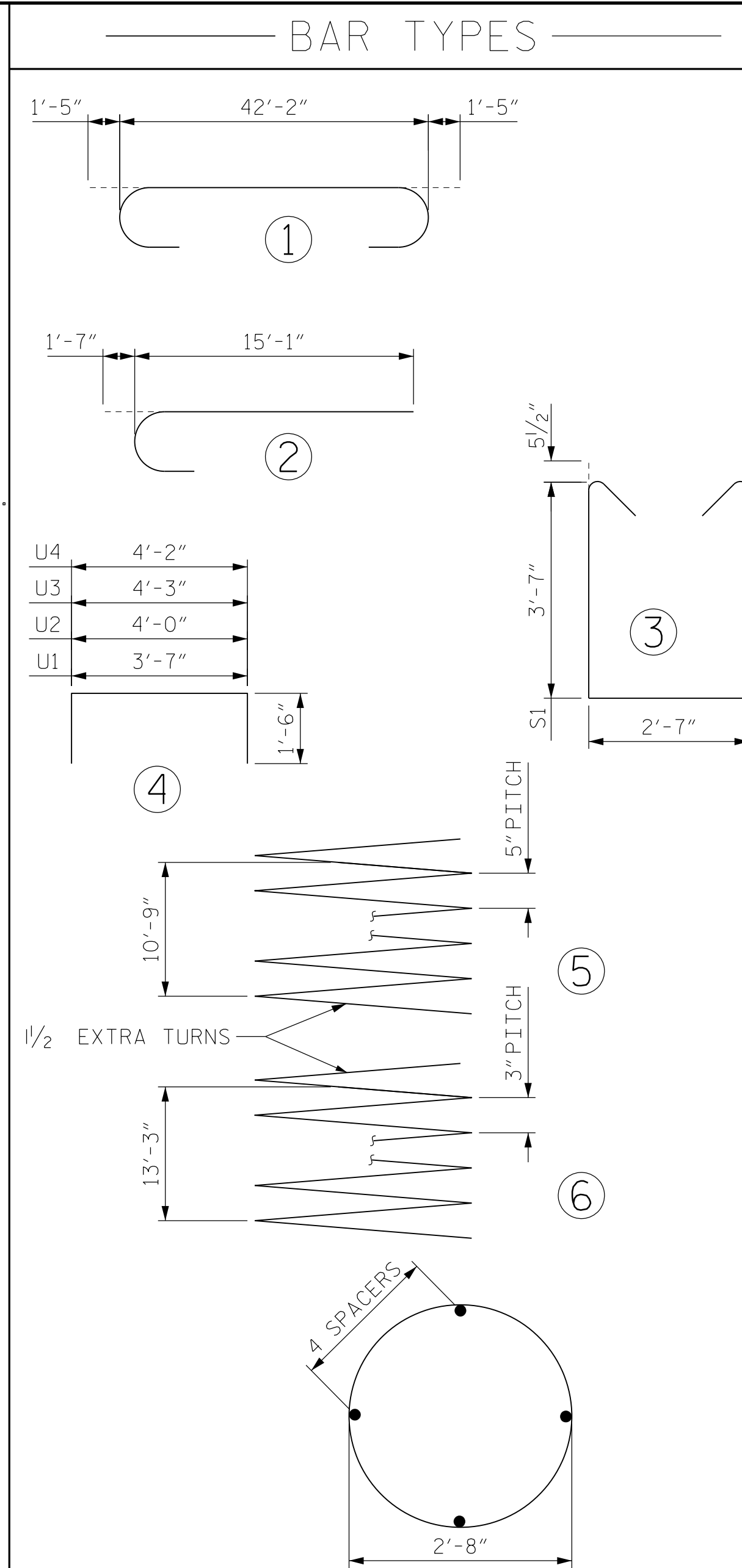
CONSTRUCTION JOINT DETAIL  
"V" AND "M" BARS NOT SHOWN FOR CLARITY



SECTION B-B



SECTION C-C



ALL BAR DIMENSIONS ARE OUT TO OUT

- \* THE SP-1 SPIRAL REINFORCING STEEL SHALL BE W31 OR D-31 COLD DRAWN WIRE OR #5 PLAIN OR DEFORMED BAR.
- \* THE SP-2 SPIRAL REINFORCING STEEL SHALL BE W20 OR D-20 COLD DRAWN WIRE OR #4 PLAIN OR DEFORMED BAR.
- ▲ NO SEPARATE PAYMENT WILL BE MADE FOR CSL TUBES. CSL TUBES WILL BE INCLUDED IN THE UNIT BID PRICE FOR DRILLED PIERS.

BILL OF MATERIAL

BENT 1					
BAR	NO.	SIZE	TYPE	LENGTH	WEIGHT
B1	6	#10	1	42'-2"	1089
B2	6	#10	STR	45'-0"	1162
B3	6	#5	STR	42'-2"	264
B4	6	#4	STR	4'-8"	19
B5	6	#4	STR	3'-10"	15
M1	36	#11	STR	19'-1"	3650
S1	132	#5	3	10'-8"	1469
U1	5	#4	4	6'-8"	22
U2	9	#4	4	7'-0"	42
U3	5	#4	4	7'-1"	24
U4	17	#4	4	7'-2"	81
V1	36	#11	2	16'-8"	3188

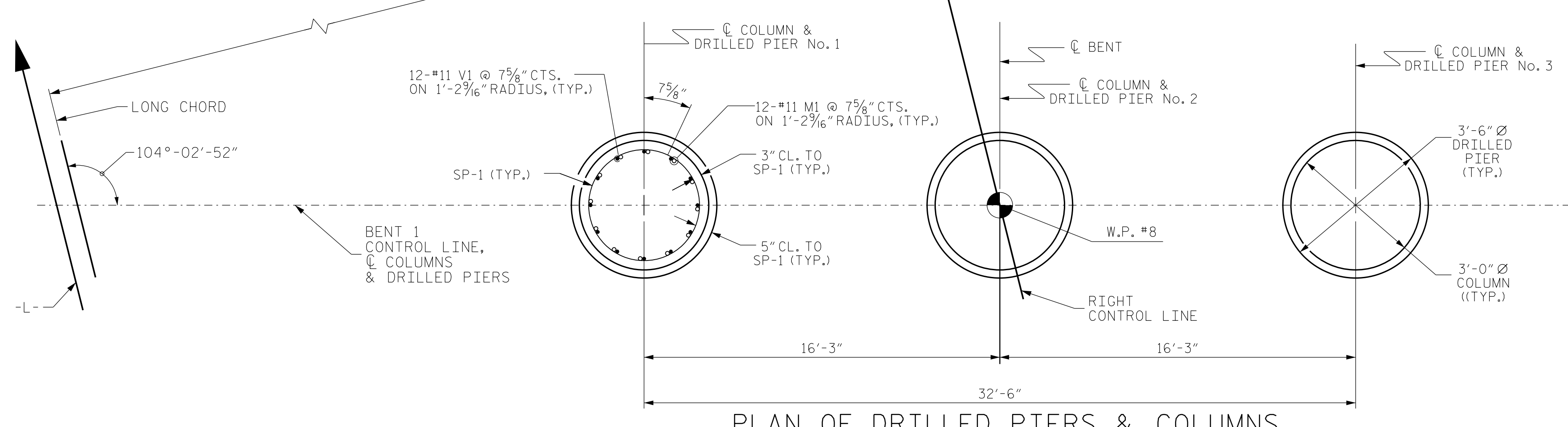
REINFORCING STEEL	LBS	11,025
SP-1	3	732
SP-2	3	911
SPIRAL COLUMN REINFORCING STEEL		1643

BENT 1 TOTAL QUANTITIES

CLASS A CONCRETE BREAKDOWN (FOR ONE BENT)	
POUR #2 (COLUMNS)	10.2 C.Y.
POUR #3 (CAP)	29.6 C.Y.
TOTAL CLASS A CONCRETE	39.8 C.Y.

DRILLED PIERS; (FOR ONE BENT)

DRILLED PIER CONCRETE POUR #1 (DRILLED PIERS)	12.1 C.Y.
3'-6" Ø DRILLED PIER NOT IN SOIL	33.8 LIN. FT.
CSL TUBES	153 LIN. FT.



PLAN OF DRILLED PIERS & COLUMNS

DRAWN BY : JAE DATE : 8/21  
 CHECKED BY : ZHB DATE : 8/21  
 DESIGN ENGINEER OF RECORD: MTP DATE : 8/21

**Dewberry**  
 2610 WYCLIFF ROAD  
 SUITE 410  
 RALEIGH, NC 27607  
 PHONE: 919.881.9939  
 NC COA No. F-0929

NORTH CAROLINA PROFESSIONAL ENGINEER  
 SEAL 030046  
 ENGINEER MATTHEW PAYNE  
 Matthew Payne  
 9/14/2021

PROJECT NO. R-5737  
 DAVIDSON COUNTY  
 STATION: 61+02.86 -L-

STATE OF NORTH CAROLINA  
 DEPARTMENT OF TRANSPORTATION  
 RALEIGH  
 SUBSTRUCTURE  
 BENT 1  
 (RIGHT BRIDGE)

REVISIONS						SHEET NO.
NO.	BY:	DATE:	NO.	BY:	DATE:	S2-20
1			3			TOTAL SHEETS
2			4			25

DOCUMENT NOT CONSIDERED FINAL UNLESS ALL SIGNATURES COMPLETED