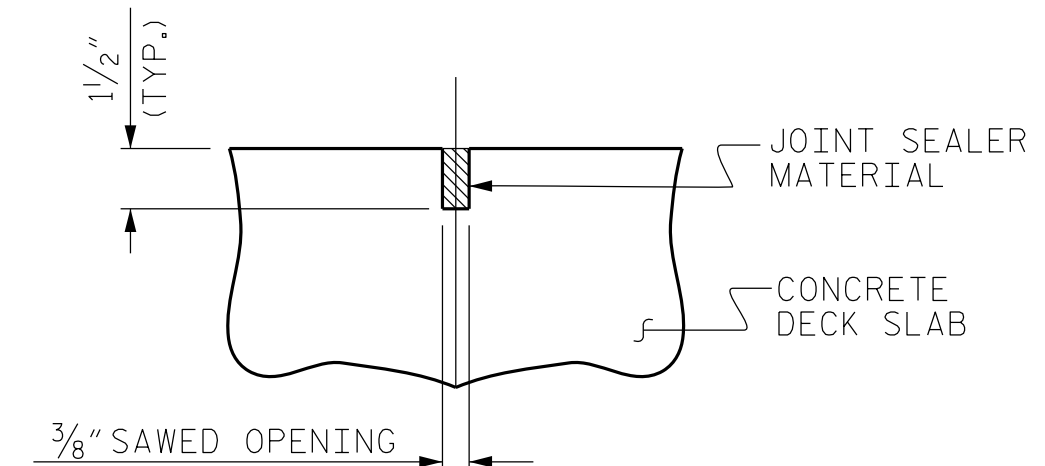
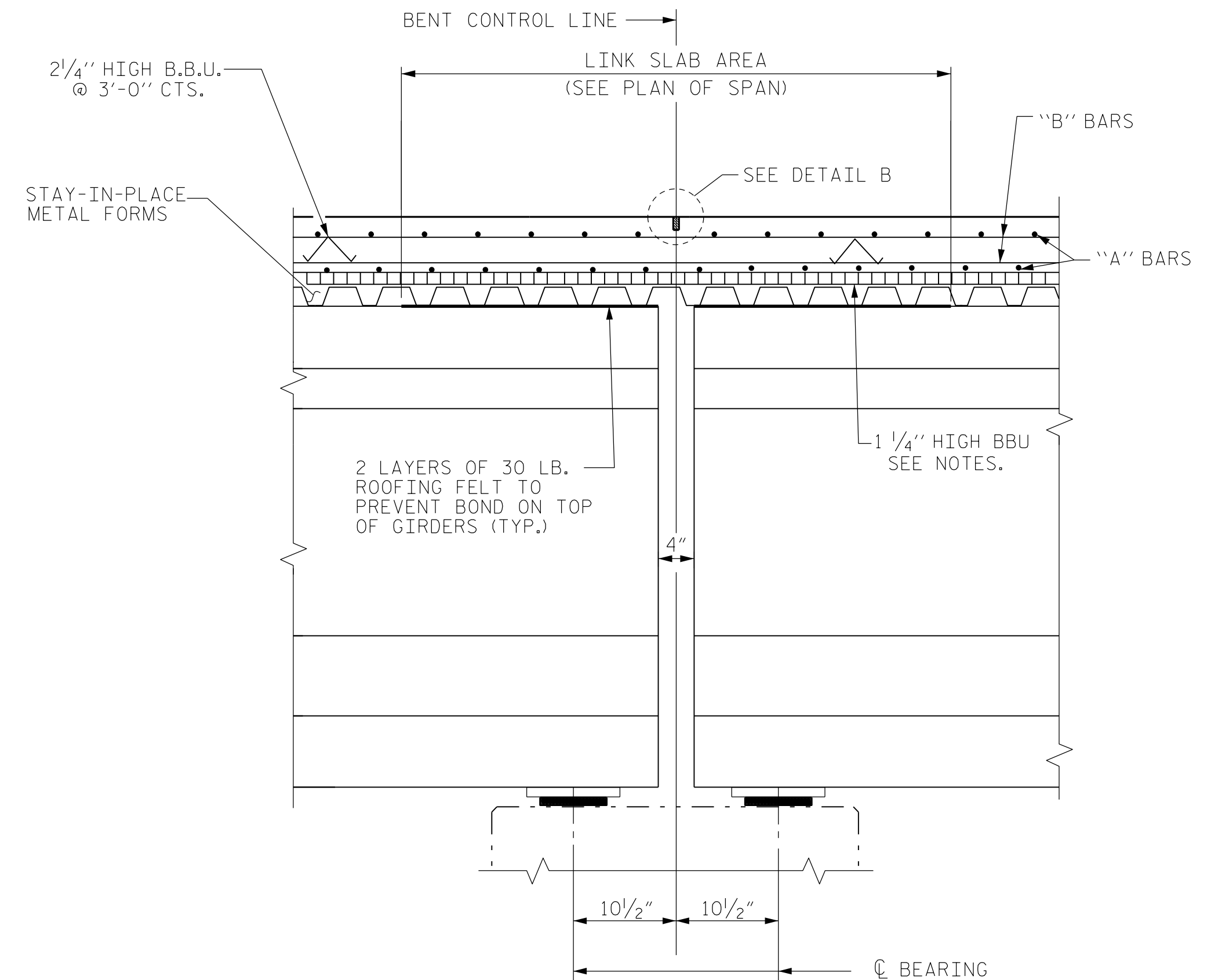


SECTION THRU INTEGRAL END BENTS

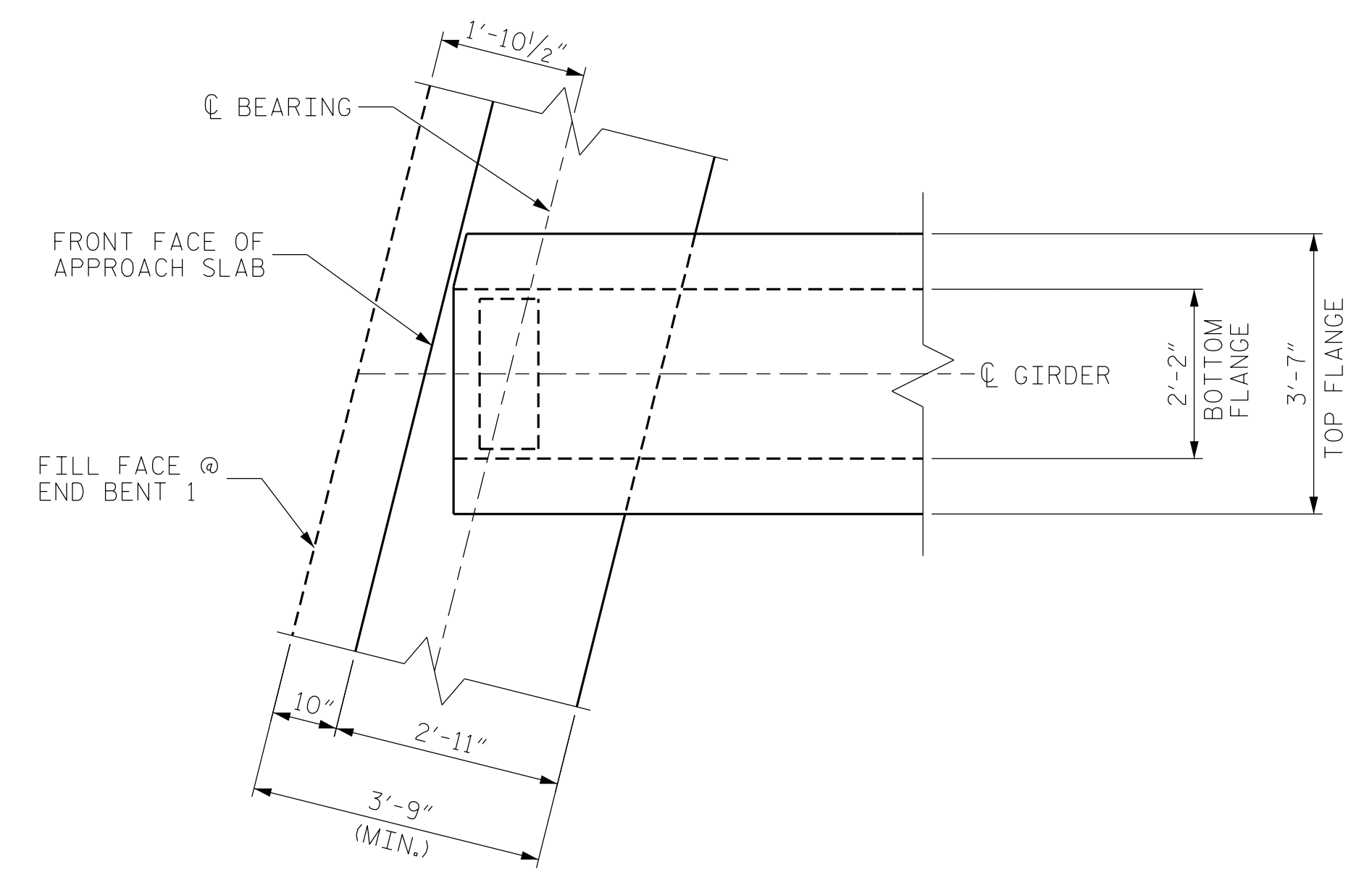


DETAIL B

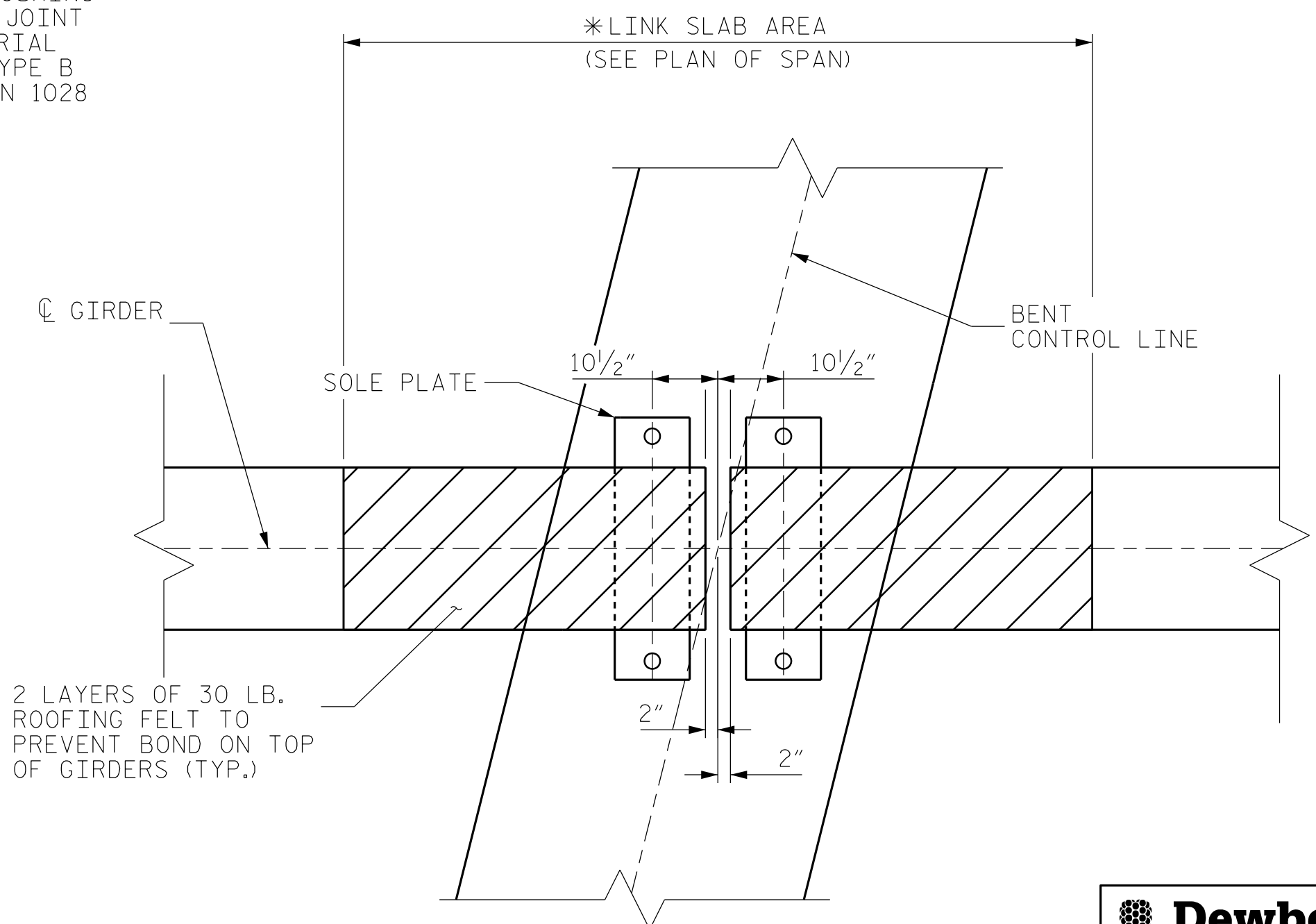
A 1/2" DEEP CONTRACTION JOINT AT BENT CONTROL LINE SHALL BE SAWED WITHIN 24 HOURS OF POURING THE DECK. THE JOINT SHALL BE FILLED WITH JOINT SEALER MATERIAL. THE JOINT SEALER MATERIAL SHALL CONFORM TO THE REQUIREMENTS OF TYPE B LOW MODULUS SILICONE SEALANT, SEE SECTION 1028 OF THE STANDARD SPECIFICATIONS.



SECTION THRU LINK SLAB



PLAN OF END BENT DIAPHRAGM



PLAN AT BENT

\* THE TOP OF THE BEAM IN THE REGION OF THE LINK SLAB SHALL BE SMOOTH AND FREE OF STIRRUPS OR ANCHOR STUDS.

PROJECT NO. R-5737  
 DAVIDSON COUNTY  
 STATION: 61+02.86 -L-  
 SHEET 2 OF 2

**Dewberry**  
 2610 WYCLIFF ROAD  
 SUITE 410  
 RALEIGH, NC 27607  
 PHONE: 919.881.9939  
 NC COA No. F-0929

NORTH CAROLINA  
 PROFESSIONAL  
 SEAL  
 030046  
 ENGINEER  
 MATTHEW PAYNE  
 DocuSigned by:  
 Matthew Payne  
 ETC309529FF484  
 9/14/2021

STATE OF NORTH CAROLINA  
 DEPARTMENT OF TRANSPORTATION  
 RALEIGH  
 SUPERSTRUCTURE  
 TYPICAL SECTION  
 DETAILS

DRAWN BY :	JAE	DATE :	8/21
CHECKED BY :	ZHB	DATE :	8/21
DESIGN ENGINEER OF RECORD:	MTP	DATE :	8/21

DOCUMENT NOT CONSIDERED  
 FINAL UNLESS ALL  
 SIGNATURES COMPLETED

REVISIONS						SHEET NO.
NO.	BY:	DATE:	NO.	BY:	DATE:	TOTAL SHEETS
1			3			25
2			4			

\*\*\*\*\*SYSTEM TIME\*\*\*\*\*  
 \*\*\*\*\*DCN\*\*\*\*\*  
 \*\*\*\*\*USERNAME\*\*\*\*\*