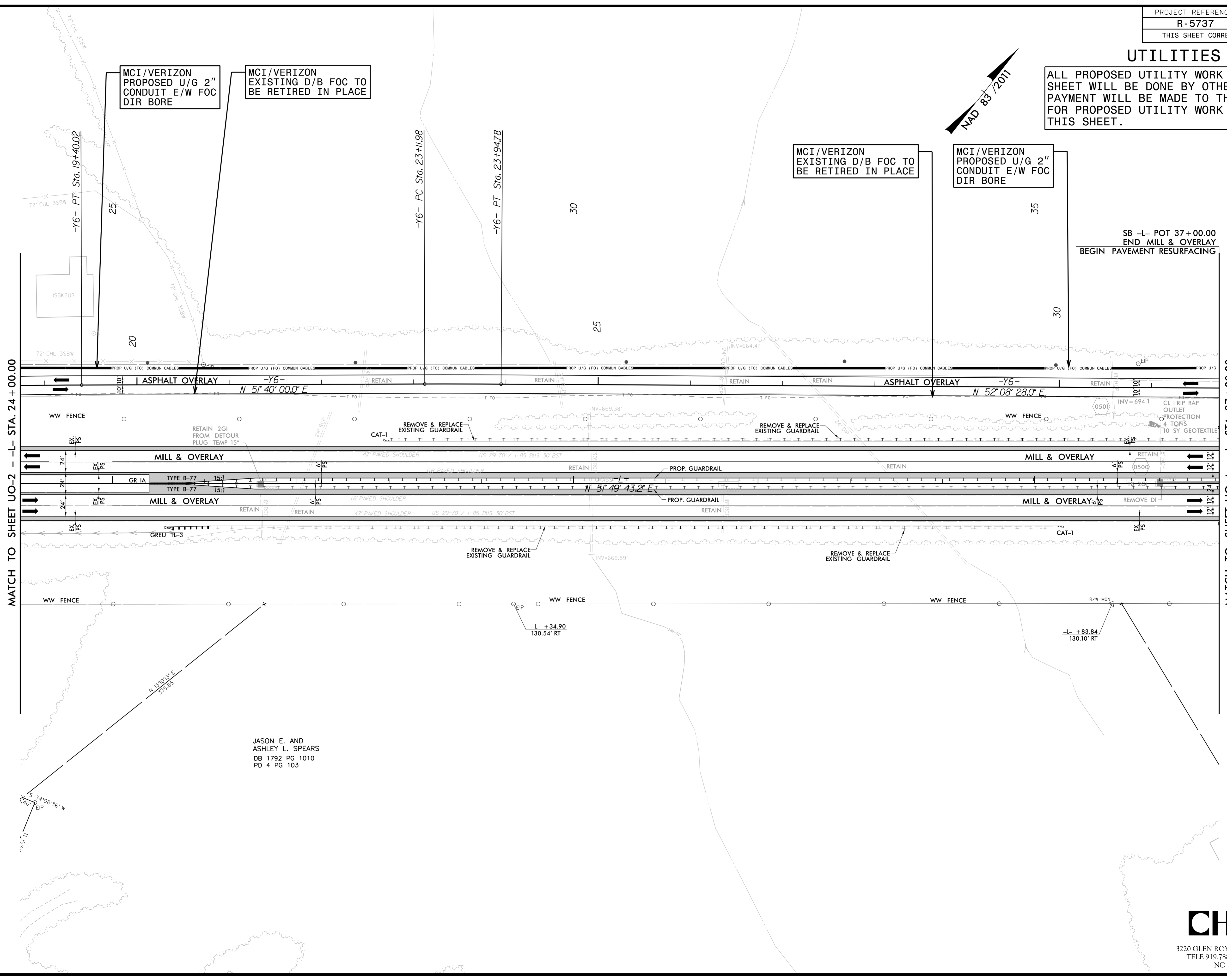
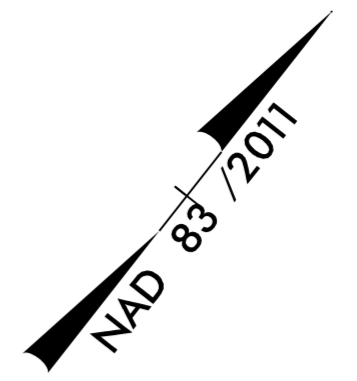


### UTILITIES BY OTHERS

ALL PROPOSED UTILITY WORK SHOWN ON THIS SHEET WILL BE DONE BY OTHERS. NO PAYMENT WILL BE MADE TO THE CONTRACTOR FOR PROPOSED UTILITY WORK SHOWN ON THIS SHEET.



MATCH TO SHEET UO-2 --L- STA. 24+00.00

MATCH TO SHEET UO-4 --L- STA. 37+00.00

MCI/VERIZON PROPOSED U/G 2" CONDUIT E/W FOC DIR BORE

MCI/VERIZON EXISTING D/B FOC TO BE RETIRED IN PLACE

MCI/VERIZON EXISTING D/B FOC TO BE RETIRED IN PLACE

MCI/VERIZON PROPOSED U/G 2" CONDUIT E/W FOC DIR BORE

SB -L- POT 37+00.00  
END MILL & OVERLAY  
BEGIN PAVEMENT RESURFACING

JASON E. AND  
ASHLEY L. SPEARS  
DB 1792 PG 1010  
PD 4 PG 103

8/6/2021 P:\SPEARS\Engineering\UBD\Proj\R5737\ut\_rdy5\_U003.psh.dgn

