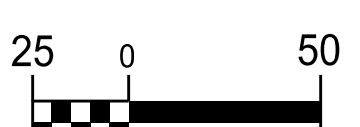


THE ESTIMATED QUANTITY OF D.I. WATER PIPE FITTINGS ON THIS PLAN SHEET IS 2,170 POUNDS. THE ACTUAL QUANTITY AND TYPE OF FITTINGS WILL VARY BASED ON FIELD CONDITIONS.

PROP. - 1 - RELOCATE WATER METER, 7 L.F. OF WATER SERVICE LINE

PROP. - 1 - FIRE HYD. 12 LF OF FIRE HYD. LEG, 1 - 6" VALVE

PROP. - 1 - RELOCATE WATER METER, 9 L.F. OF WATER SERVICE LINE

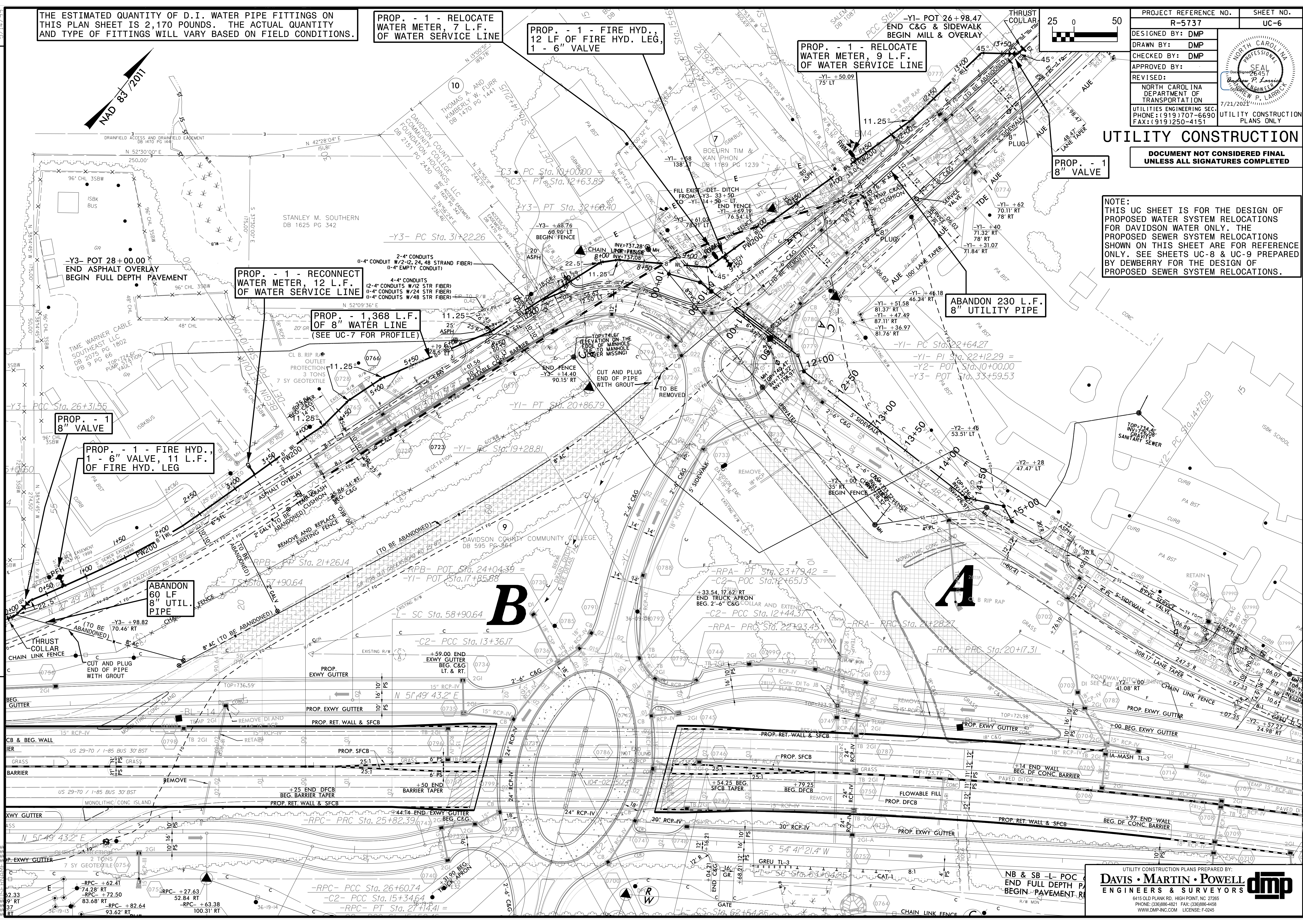


PROJECT REFERENCE NO.	R-5737	SHEET NO.	UC-6
DESIGNED BY:	DMP		
DRAWN BY:	DMP		
CHECKED BY:	DMP		
APPROVED BY:	DMP		
REVISED:			
NORTH CAROLINA DEPARTMENT OF TRANSPORTATION		7/23/2021	
UTILITIES ENGINEERING SEC. PHONE: (919) 707-6690 FAX: (919) 250-4151		UTILITY CONSTRUCTION PLANS ONLY	

UTILITY CONSTRUCTION

DOCUMENT NOT CONSIDERED FINAL UNLESS ALL SIGNATURES COMPLETED

NOTE: THIS UC SHEET IS FOR THE DESIGN OF PROPOSED WATER SYSTEM RELOCATIONS FOR DAVIDSON COUNTY ONLY. THE PROPOSED SEWER SYSTEM RELOCATIONS SHOWN ON THIS SHEET ARE FOR REFERENCE ONLY. SEE SHEETS UC-8 & UC-9 PREPARED BY DEWBERRY FOR THE DESIGN OF PROPOSED SEWER SYSTEM RELOCATIONS.



REVISIONS

UTILITY CONSTRUCTION PLANS PREPARED BY:

DAVIS • MARTIN • POWELL
ENGINEERS & SURVEYORS

8415 OLD PLANK RD., HIGH POINT, NC 27265
PHONE: (336) 886-4821 FAX: (336) 886-4458
WWW.DMP-INC.COM LICENSE: F-2445