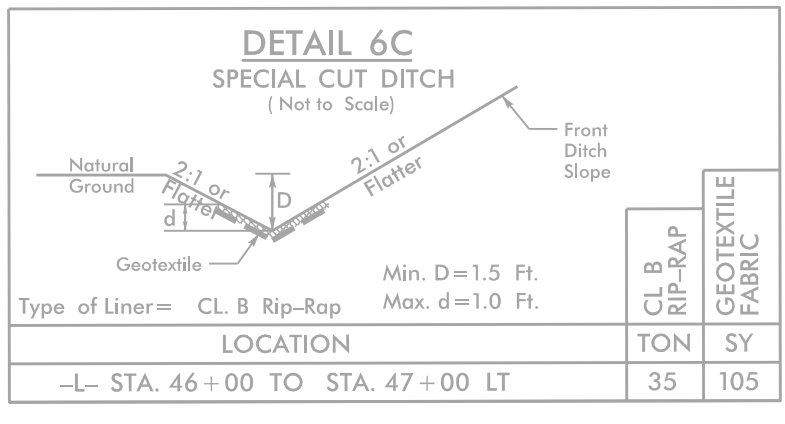
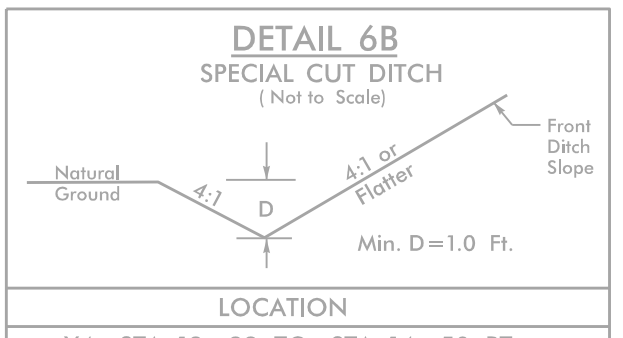
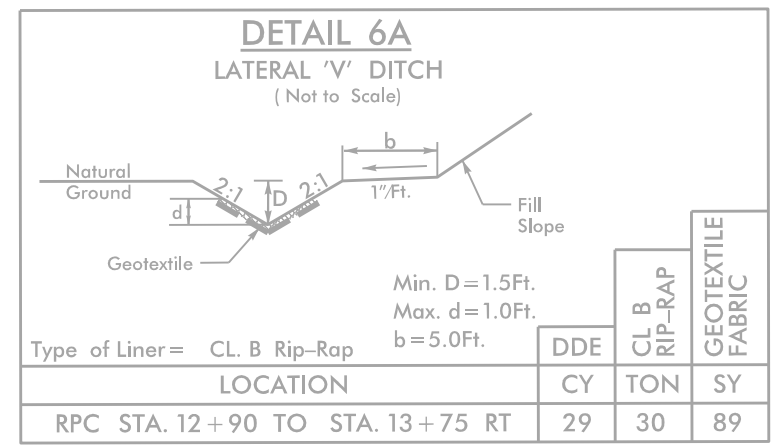


5/14/2011



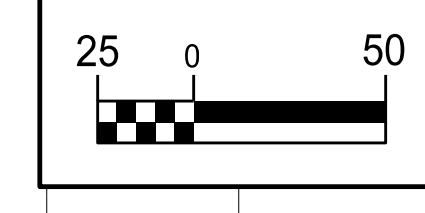
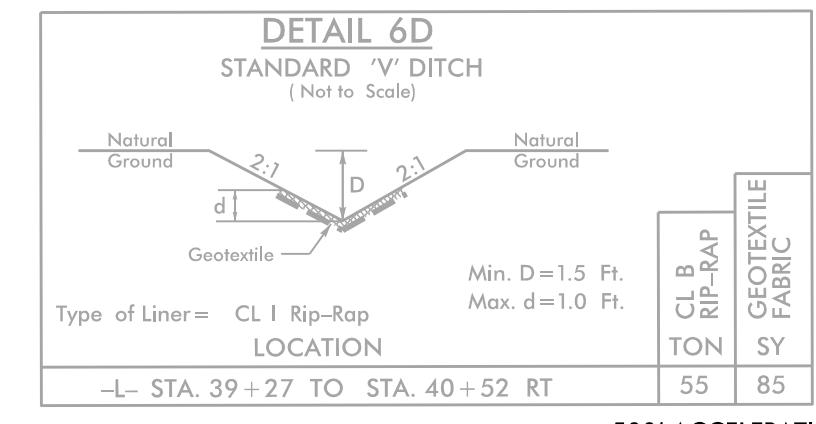
CURVE DATA FOR -Y6-

PI Sta 34+61.43
 $\Delta = 0^\circ 30' 51.9''$ (LT)
 $D = 0^\circ 34' 22.6''$
 $L = 89.78'$
 $T = 44.89'$
 $R = 10,000.00'$
 $Se = EXIST$

CURVE DATA FOR -RPB-

PIs Sta 10+66.67
 $\Delta s = 0^\circ 28' 41.7''$
 $Ls = 100.00'$
 $LT = 66.67'$
 $ST = 33.33'$

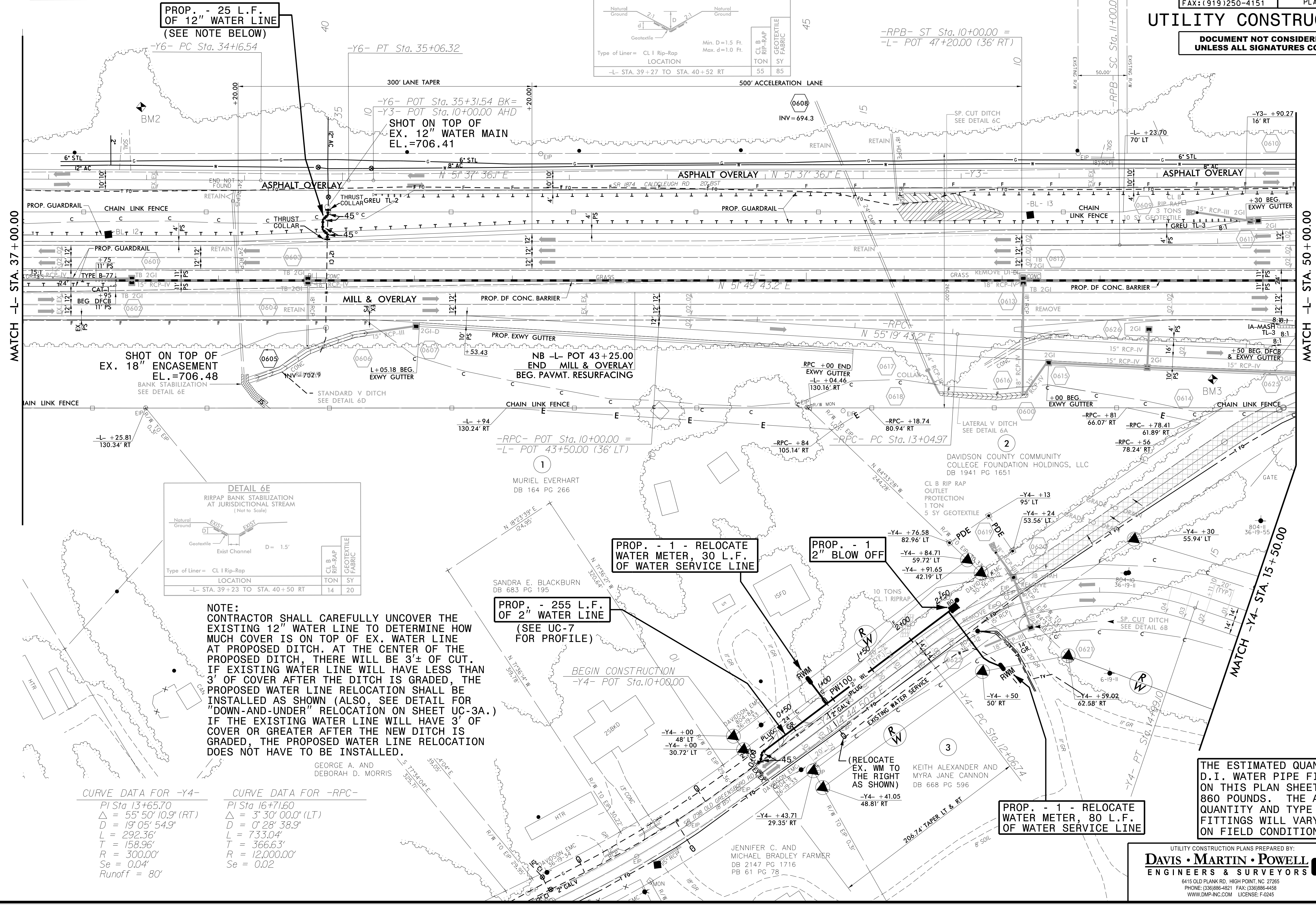
PI Sta 13+03.02
 $\Delta = 3^\circ 52' 56.3''$ (LT)
 $D = 0^\circ 57' 23.5''$
 $L = 405.88'$
 $T = 203.02'$
 $R = 5,990.00'$
 $Se = 0.02$



PROJECT REFERENCE NO.	R-5737	SHEET NO.	UC-5
DESIGNED BY:	DMP		
DRAWN BY:	DMP		
CHECKED BY:	DMP		
APPROVED BY:	DMP		
REVISOR:			
NORTH CAROLINA DEPARTMENT OF TRANSPORTATION		7/14/2011	
UTILITIES ENGINEERING SEC. PHONE: (919) 707-6690 FAX: (919) 250-4151		UTILITY CONSTRUCTION PLANS ONLY	

UTILITY CONSTRUCTION

DOCUMENT NOT CONSIDERED FINAL UNLESS ALL SIGNATURES COMPLETED



CURVE DATA FOR -Y4-

PI Sta 13+65.70
 $\Delta = 55^\circ 50' 10.9''$ (RT)
 $D = 19^\circ 05' 54.9''$
 $L = 292.36'$
 $T = 158.96'$
 $R = 300.00'$
 $Se = 0.04'$
 $Runoff = 80'$

CURVE DATA FOR -RPC-

PI Sta 16+71.60
 $\Delta = 3^\circ 30' 00.0''$ (LT)
 $D = 0^\circ 28' 38.9''$
 $L = 733.04'$
 $T = 366.63'$
 $R = 12,000.00'$
 $Se = 0.02$

THE ESTIMATED QUANTITY OF D.I. WATER PIPE FITTINGS ON THIS PLAN SHEET IS 860 POUNDS. THE ACTUAL QUANTITY AND TYPE OF FITTINGS WILL VARY BASED ON FIELD CONDITIONS.