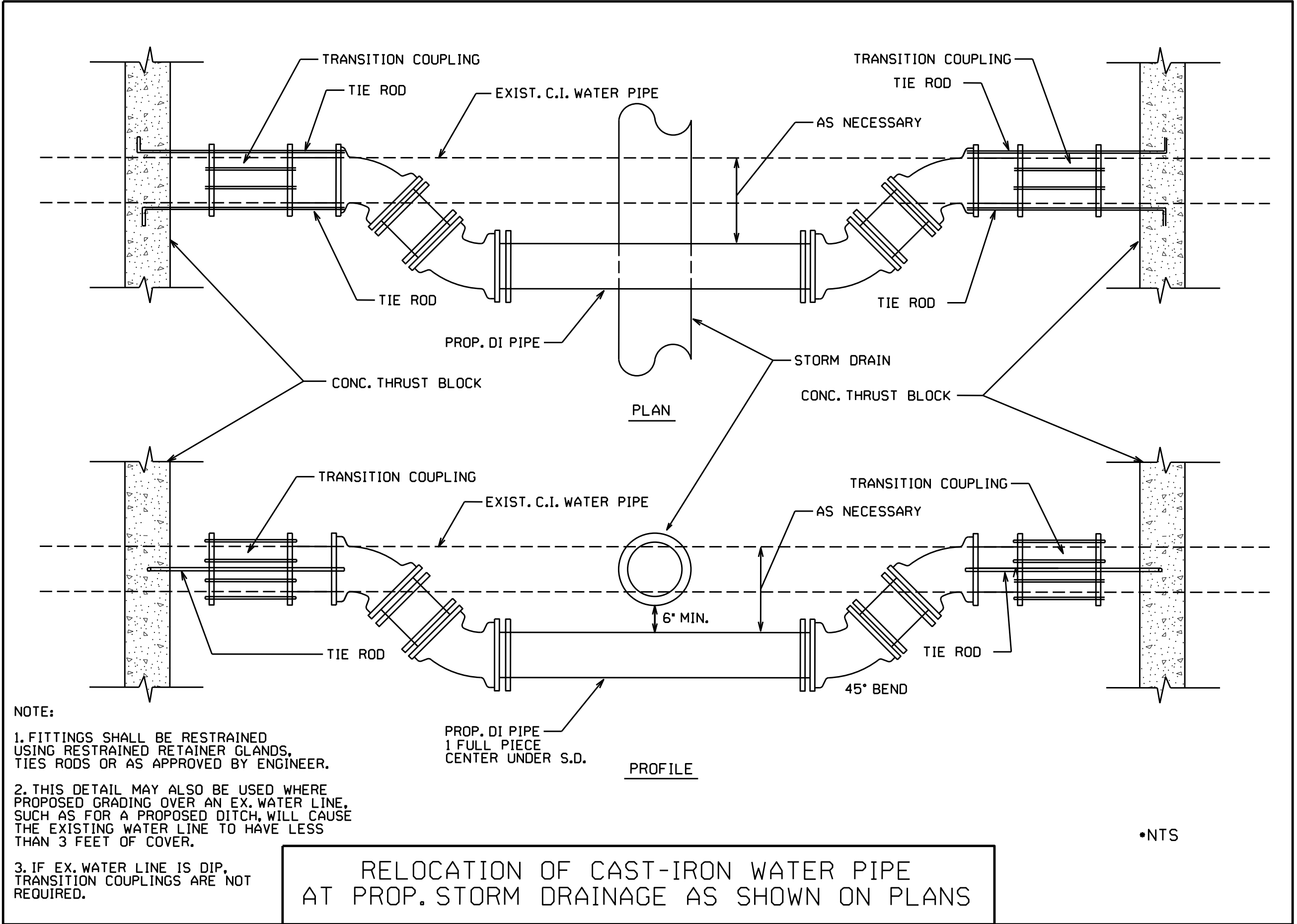


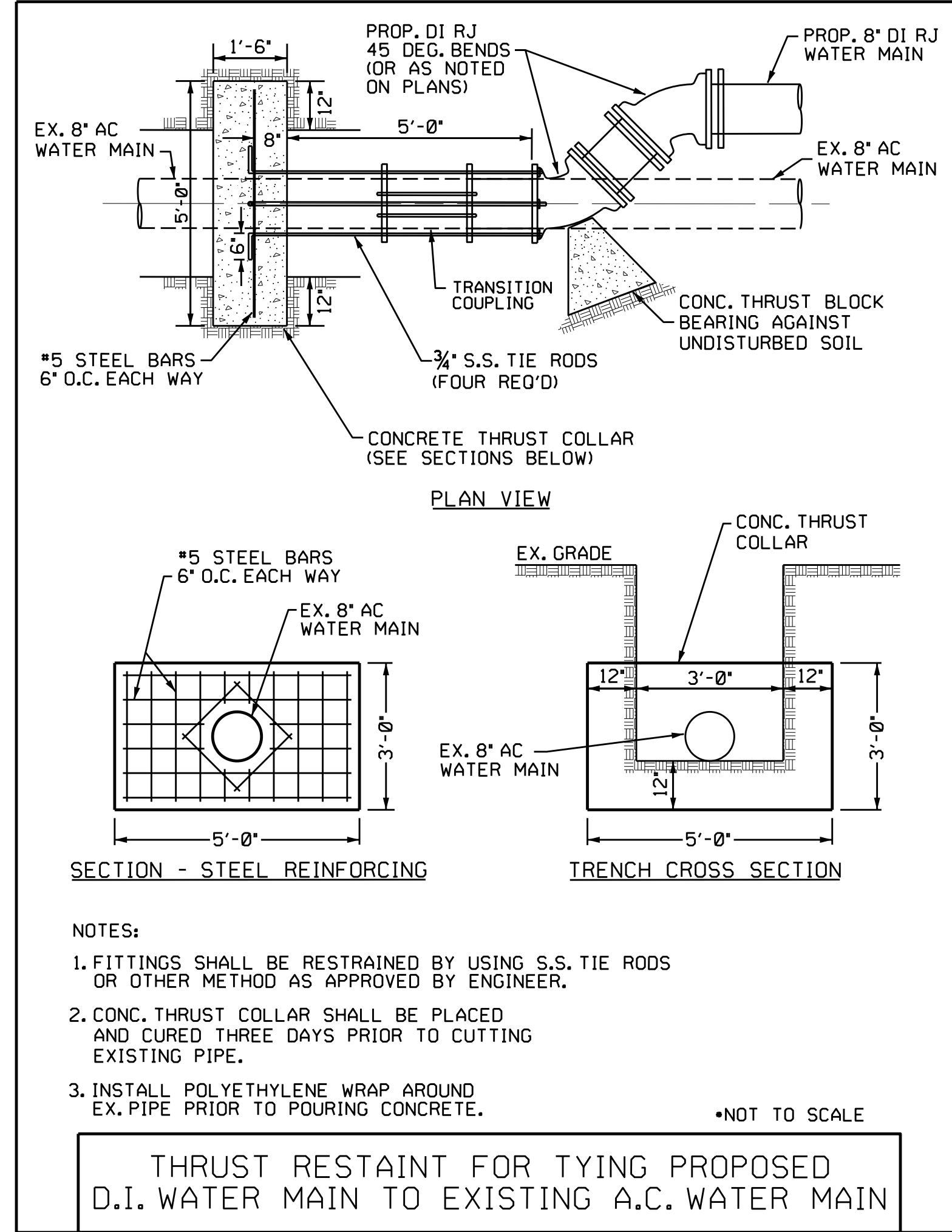
5/14/99

REVISIONS



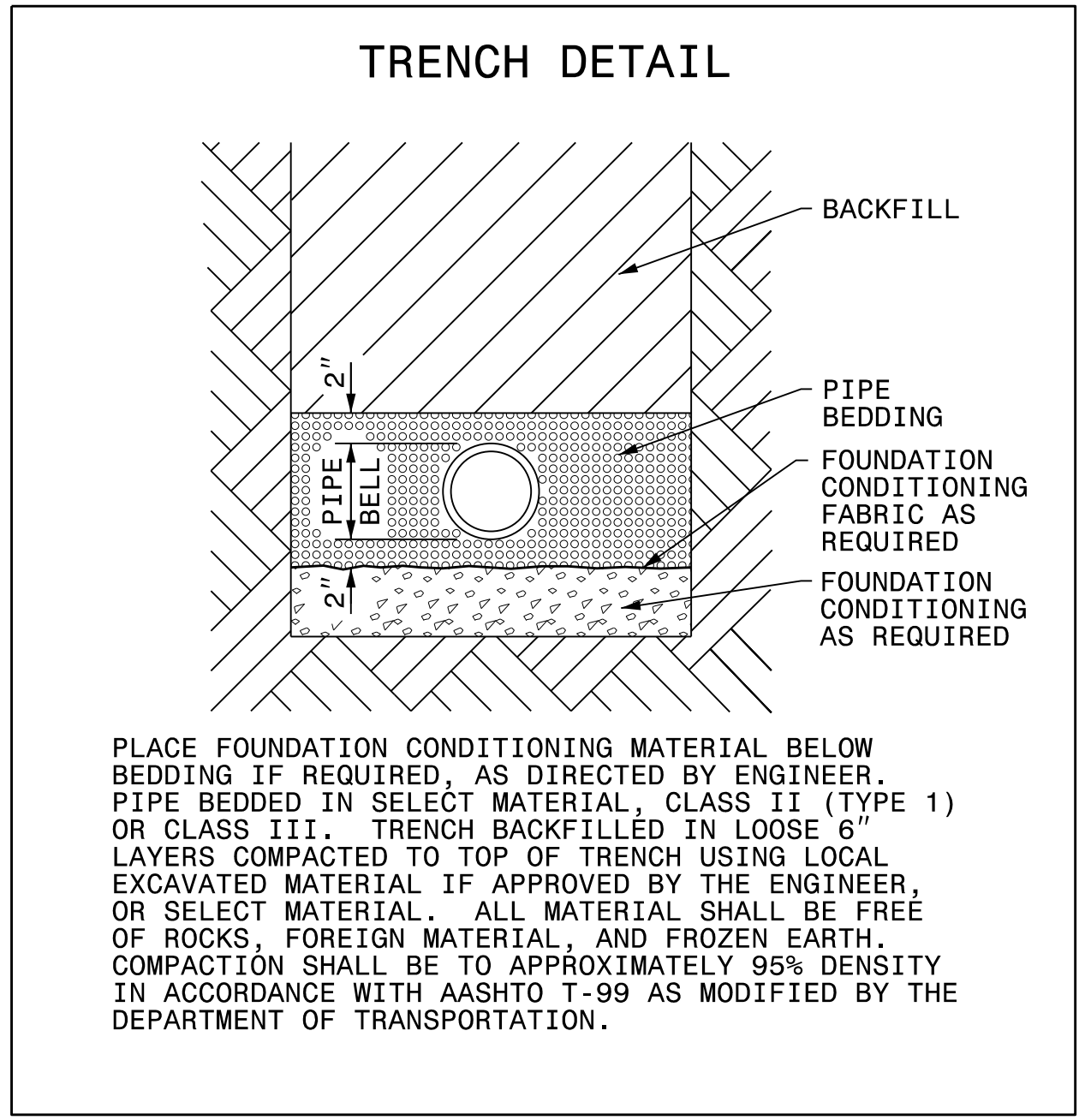
- NOTE:
1. FITTINGS SHALL BE RESTRAINED USING RESTRAINED RETAINER GLANDS, TIE RODS OR AS APPROVED BY ENGINEER.
  2. THIS DETAIL MAY ALSO BE USED WHERE PROPOSED GRADING OVER AN EX. WATER LINE, SUCH AS FOR A PROPOSED DITCH, WILL CAUSE THE EXISTING WATER LINE TO HAVE LESS THAN 3 FEET OF COVER.
  3. IF EX. WATER LINE IS DIP, TRANSITION COUPLINGS ARE NOT REQUIRED.

RELOCATION OF CAST-IRON WATER PIPE AT PROP. STORM DRAINAGE AS SHOWN ON PLANS



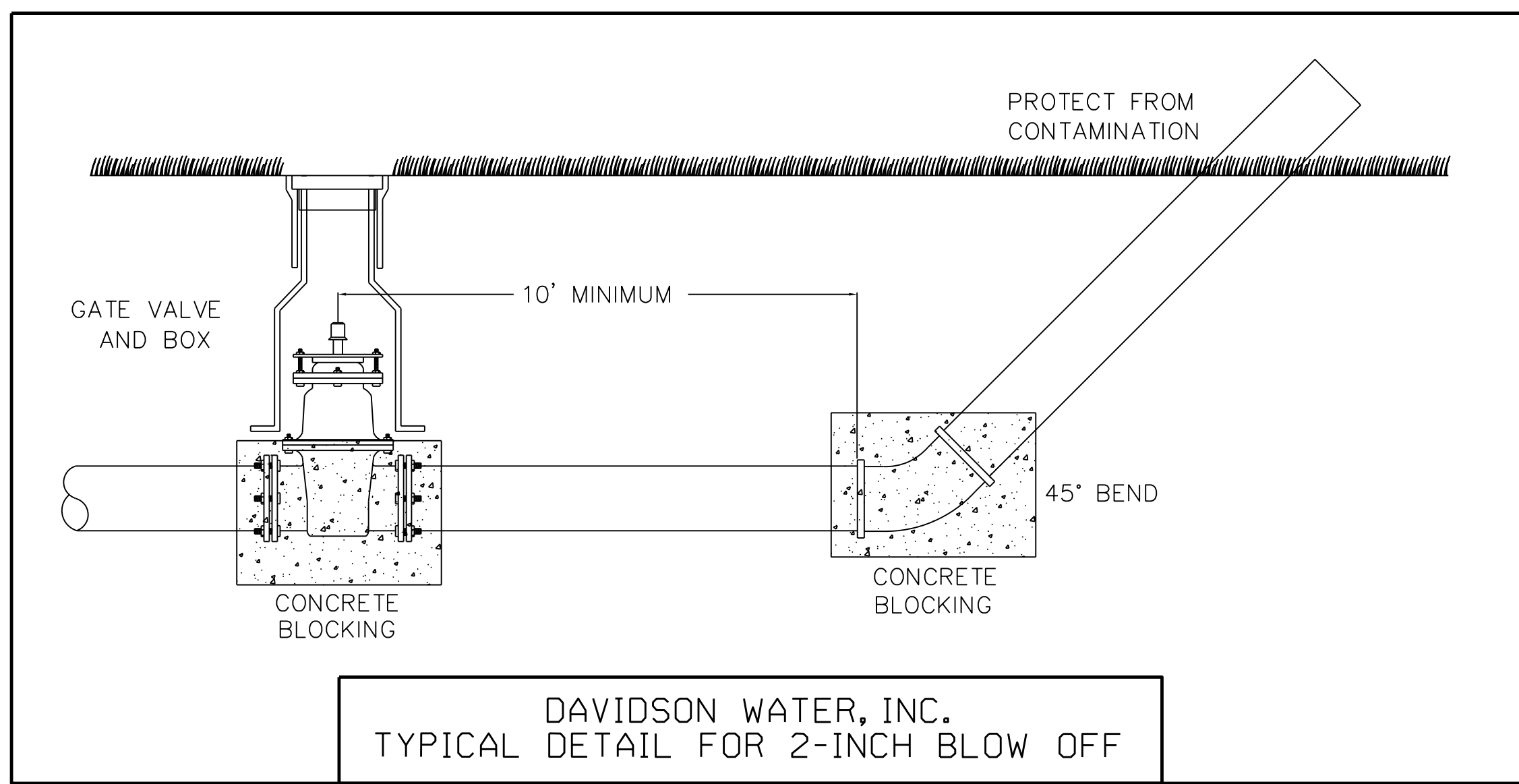
- NOTES:
1. FITTINGS SHALL BE RESTRAINED BY USING S.S. TIE RODS OR OTHER METHOD AS APPROVED BY ENGINEER.
  2. CONC. THRUST COLLAR SHALL BE PLACED AND CURED THREE DAYS PRIOR TO CUTTING EXISTING PIPE.
  3. INSTALL POLYETHYLENE WRAP AROUND EX. PIPE PRIOR TO POURING CONCRETE.

THRUST RESTRAINT FOR TYING PROPOSED D.I. WATER MAIN TO EXISTING A.C. WATER MAIN



PLACE FOUNDATION CONDITIONING MATERIAL BELOW BEDDING IF REQUIRED, AS DIRECTED BY ENGINEER. PIPE BEDDED IN SELECT MATERIAL, CLASS II (TYPE 1) OR CLASS III, TRENCH BACKFILLED IN LOOSE 6" LAYERS COMPACTED TO TOP OF TRENCH USING LOCAL EXCAVATED MATERIAL IF APPROVED BY THE ENGINEER, OR SELECT MATERIAL. ALL MATERIAL SHALL BE FREE OF ROCKS, FOREIGN MATERIAL, AND FROZEN EARTH. COMPACTION SHALL BE TO APPROXIMATELY 95% DENSITY IN ACCORDANCE WITH AASHTO T-99 AS MODIFIED BY THE DEPARTMENT OF TRANSPORTATION.

MAXIMUM TRENCH WIDTH AT TOP OF PIPE			
NOMINAL PIPE SIZE (INCHES)	TRENCH WIDTH (INCHES)	NOMINAL PIPE SIZE (INCHES)	TRENCH WIDTH (INCHES)
4	28	20	44
6	30	24	48
8	32	30	54
10	34	36	60
12	36	42	66
14	38	48	72
16	40	54	78
18	42		



DAVIDSON WATER, INC. TYPICAL DETAIL FOR 2-INCH BLOW OFF

PROJECT REFERENCE NO. R-5737	SHEET NO. UC-3A
DESIGNED BY: DMP	
DRAWN BY: DMP	
CHECKED BY: DMP	
APPROVED BY:	
REVISED:	
NORTH CAROLINA DEPARTMENT OF TRANSPORTATION UTILITIES ENGINEERING SEC. PHONE: (919) 707-6690 FAX: (919) 250-4151	
UTILITY CONSTRUCTION PLANS ONLY	

**UTILITY CONSTRUCTION**  
DOCUMENT NOT CONSIDERED FINAL UNLESS ALL SIGNATURES COMPLETED