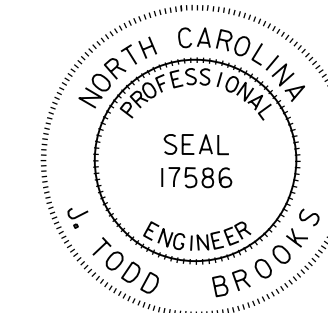


APPROVED: \_\_\_\_\_

DATE: \_\_\_\_\_

SEAL



**DOCUMENT NOT CONSIDERED FINAL UNLESS ALL SIGNATURES COMPLETED**

SIGN NUMBER: 105      BACKG COLOR: Green  
TYPE: B      COPY COLOR: White  
QUANTITY: 1

SYMBOL	X	Y	WID	HT
AR_Type D	74.9	6	6	9

SIGN WIDTH: 8'-0"  
HEIGHT: 1'-6"  
TOTAL AREA: 12.0 Sq.Ft.

BORDER TYPE: FLUSH  
RECESS: 0"  
WIDTH: 0.75"  
RADII: 2.25"

NO. Z BARS:      MAT'L: 0.125" (3.2 mm) ALUMINUM  
LENGTH:

DESIGN BY: PGPADILLA      CHECKED BY: JT Brooks      Feb 26, 2021  
PROJECT ID: R-5737      LOCATION: DAVIDSON CO.      DIV: 9

USE NOTES:  
1. Legend and border shall be direct applied Grade C sheeting.  
2. Background shall be Grade C reflective sheeting.  
3. Arrow shall be on 0.032" aluminum, white Grade C reflective sheeting and demountable.

Spacing Factor is 1 unless specified otherwise

LETTER POSITIONS

Letter spacings are to start of next letter

Series/Size	Text Length
D 2000	53.8

FILENAME: DCCC Signing      NORTH CAROLINA D.O.T. SIGN DETAIL

SIGN NUMBER: 106      BACKG COLOR: Green  
TYPE: B      COPY COLOR: White  
QUANTITY: 1

SYMBOL	X	Y	WID	HT
AR_Type D	76.7	12	6	9

SIGN WIDTH: 8'-0"  
HEIGHT: 2'-6"  
TOTAL AREA: 20.0 Sq.Ft.

BORDER TYPE: FLUSH  
RECESS: 0"  
WIDTH: 0.75"  
RADII: 2.25"

NO. Z BARS:      MAT'L: 0.125" (3.2 mm) ALUMINUM  
LENGTH:

DESIGN BY: PGPADILLA      CHECKED BY: JT Brooks      Feb 26, 2021  
PROJECT ID: R-5737      LOCATION: DAVIDSON CO.      DIV: 9

USE NOTES:  
1. Legend and border shall be direct applied Grade C sheeting.  
2. Background shall be Grade C reflective sheeting.  
3. Arrow shall be .032" aluminum, white Grade C reflective sheeting and demountable.

Spacing Factor is 1 unless specified otherwise

LETTER POSITIONS

Letter spacings are to start of next letter

Series/Size	Text Length
D 2000	57.4
D 2000	3
D 2000	54.7

FILENAME: DCCC Signing      NORTH CAROLINA D.O.T. SIGN DETAIL

SIGN NUMBER: 107      BACKG COLOR: Green  
TYPE: B      COPY COLOR: White  
QUANTITY: 1

SYMBOL	X	Y	WID	HT
AR_Type D	10.3	12	6	9

SIGN WIDTH: 8'-0"  
HEIGHT: 2'-6"  
TOTAL AREA: 20.0 Sq.Ft.

BORDER TYPE: FLUSH  
RECESS: 0"  
WIDTH: 0.75"  
RADII: 2.25"

NO. Z BARS:      MAT'L: 0.125" (3.2 mm) ALUMINUM  
LENGTH:

DESIGN BY: PGPADILLA      CHECKED BY: JT Brooks      Feb 26, 2021  
PROJECT ID: R-5737      LOCATION: DAVIDSON CO.      DIV: 9

USE NOTES:  
1. Legend and border shall be direct applied Grade C sheeting.  
2. Background shall be Grade C reflective sheeting.  
3. Arrow shall be .032" aluminum, white Grade C reflective sheeting and demountable.

Spacing Factor is 1 unless specified otherwise

LETTER POSITIONS

Letter spacings are to start of next letter

Series/Size	Text Length
D 2000	57.4
D 2000	3
D 2000	54.7

FILENAME: DCCC Signing      NORTH CAROLINA D.O.T. SIGN DETAIL

SIGN NUMBER: 201, 202      BACKG COLOR: Green  
TYPE: A      COPY COLOR: White  
QUANTITY: 2

SYMBOL	X	Y	WID	HT
AR_Type A	24.8	7	17.9	28.1

SIGN WIDTH: 6'-0"  
HEIGHT: 5'-0"  
TOTAL AREA: 30.0 Sq.Ft.

BORDER TYPE: FLUSH  
RECESS: 0"  
WIDTH: 1.5"  
RADII: 6"

NO. Z BARS: 2      MAT'L: 0.125" (3.2 mm) ALUMINUM  
LENGTH: 64.0

DESIGN BY: PGPADILLA      CHECKED BY: JT Brooks      Jul 20, 2020  
PROJECT ID: R-5737      LOCATION: DAVIDSON CO.      DIV: 9

USE NOTES:  
1. Legend and border shall be direct applied Grade C sheeting.  
2. Background shall be Grade C reflective sheeting.  
3. Arrow shall be .032" aluminum, white Grade C reflective sheeting and demountable.

Spacing Factor is 1 unless specified otherwise

LETTER POSITIONS

Letter spacings are to start of next letter

Series/Size	Text Length
EM 2000	44.9

FILENAME: DCCC Signing      NORTH CAROLINA D.O.T. SIGN DETAIL

invalid expression  
USER: obs@ncdps.gov



2610 WYCLIFF ROAD  
SUITE 410  
RALEIGH, NC 27607  
PHONE: 919.881.9939  
NC COA No. F-0929

**SIGN DESIGNS**