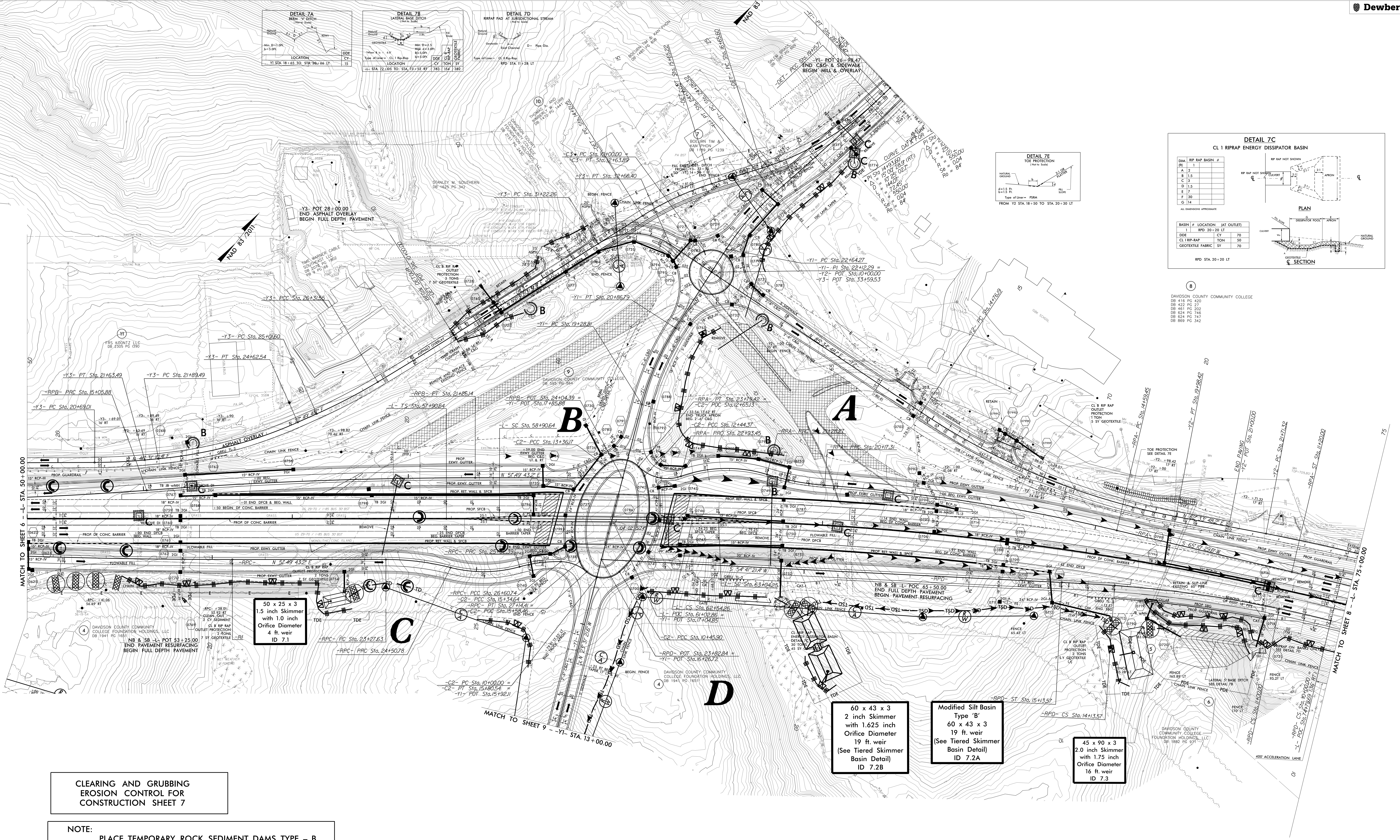
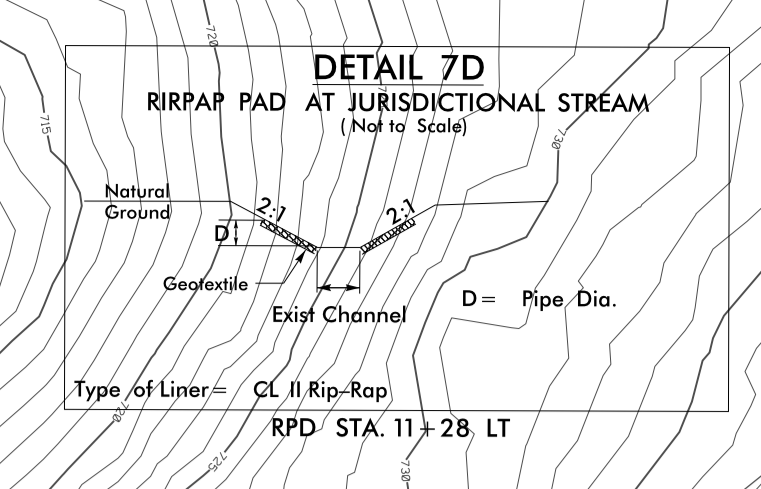
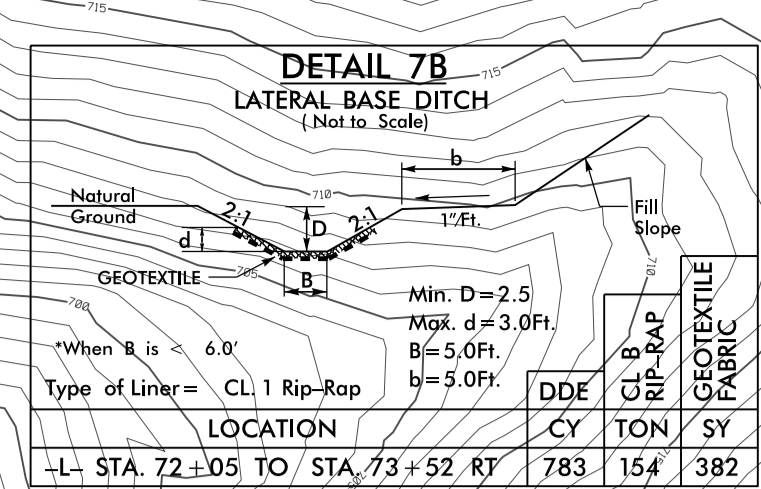
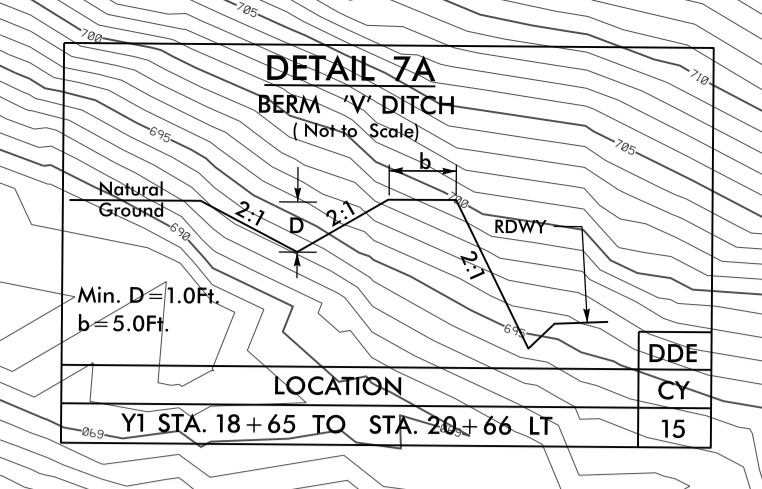
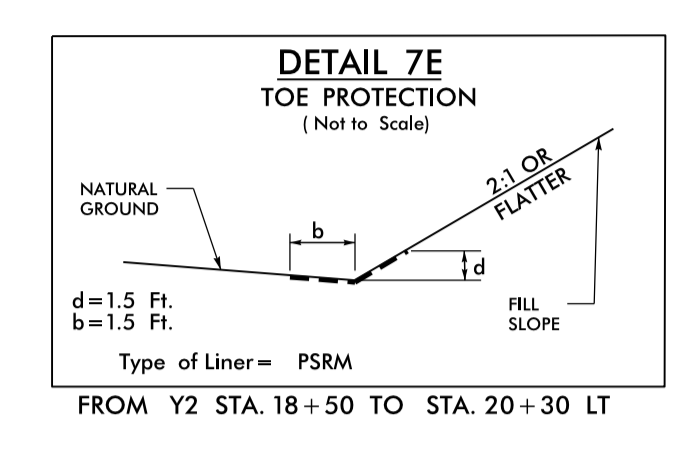
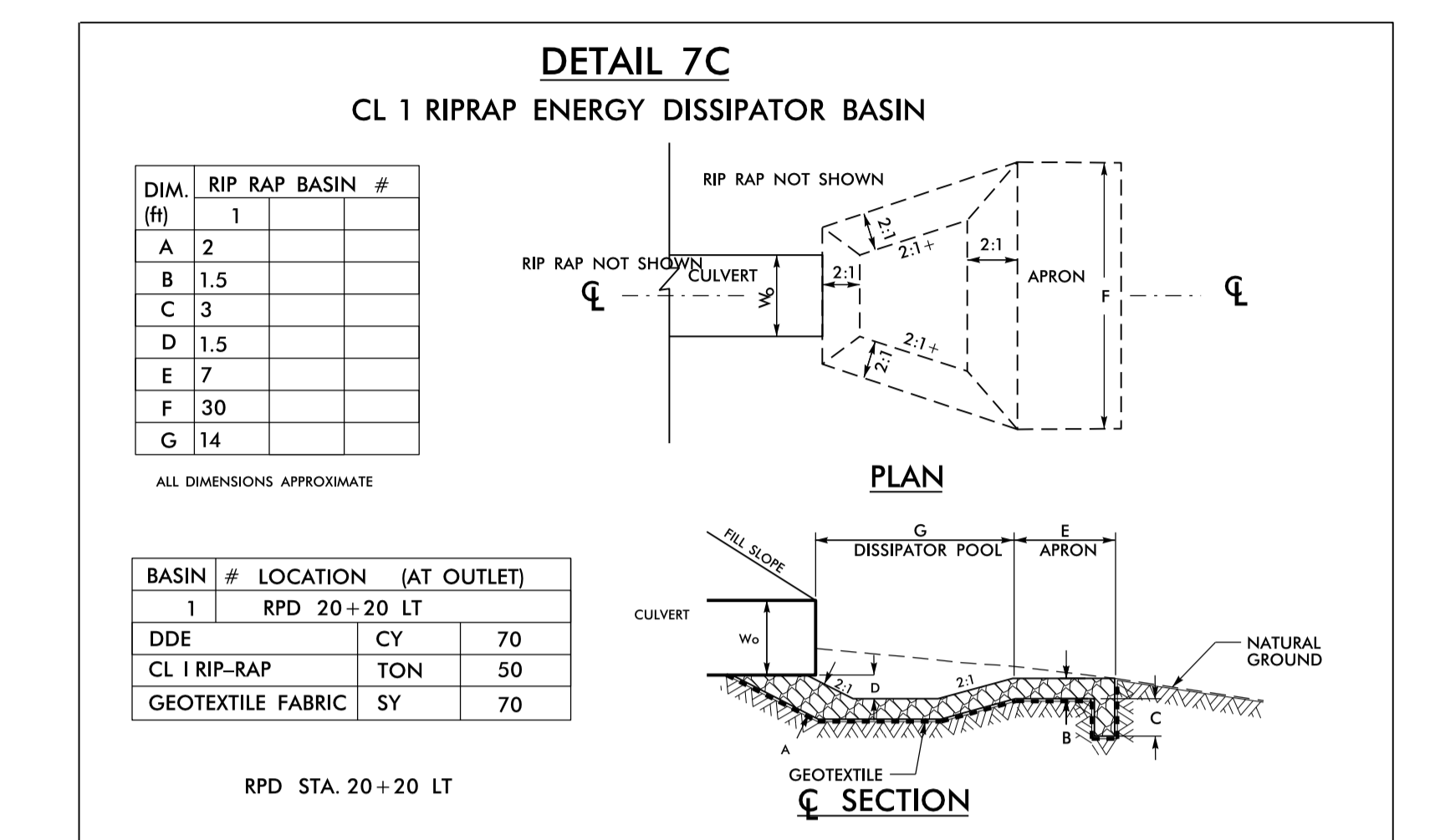


TRAFFIC DATA

A	163	182
B	51	20
C	193	24
D	1	2

1-85 BUS
VPD IN 100s



**CLEARING AND GRUBBING
EROSION CONTROL FOR
CONSTRUCTION SHEET 7**

NOTE:
PLACE TEMPORARY ROCK SEDIMENT DAMS TYPE - B
AND TEMPORARY ROCK SILT CHECKS TYPE - A AT
DRAINAGE OUTLETS.

50 x 25 x 3
1.5 inch Skimmer
with 1.0 inch
Orifice Diameter
4 ft. weir
ID 7.1

60 x 43 x 3
2 inch Skimmer
with 1.625 inch
Orifice Diameter
19 ft. weir
(See Tiered Skimmer
Basin Detail)
ID 7.2B

Modified Silt Basin
Type 'B'
60 x 43 x 3
19 ft. weir
(See Tiered Skimmer
Basin Detail)
ID 7.2A

45 x 90 x 3
2.0 inch Skimmer
with 1.75 inch
Orifice Diameter
16 ft. weir
ID 7.3

LEGEND

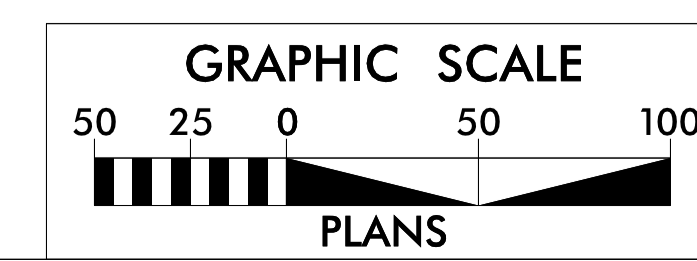
- 5" MONOLITHIC CONCRETE ISLAND
- 7" CONCRETE TRUCK APRON
- 7" CONCRETE TRUCK ISLAND
- 3" CONCRETE ISLAND COVER
- 4" CONCRETE SIDEWALK

LOCATION: CONVERT AT-GRADE INTERSECTION OF
OLD GREENSBORO RD. (SR 1798) AND
I-85 BUS. US 29-70 TO INTERCHANGE

TIP NO.: R-5737 COUNTY: DAVIDSON

DESIGNED BY: WET DATE: 7/13/2021

CHECKED BY: DJM DATE: 7/13/2021



7/13/2021 10:54:41 AM c:\p1\h17.dwg