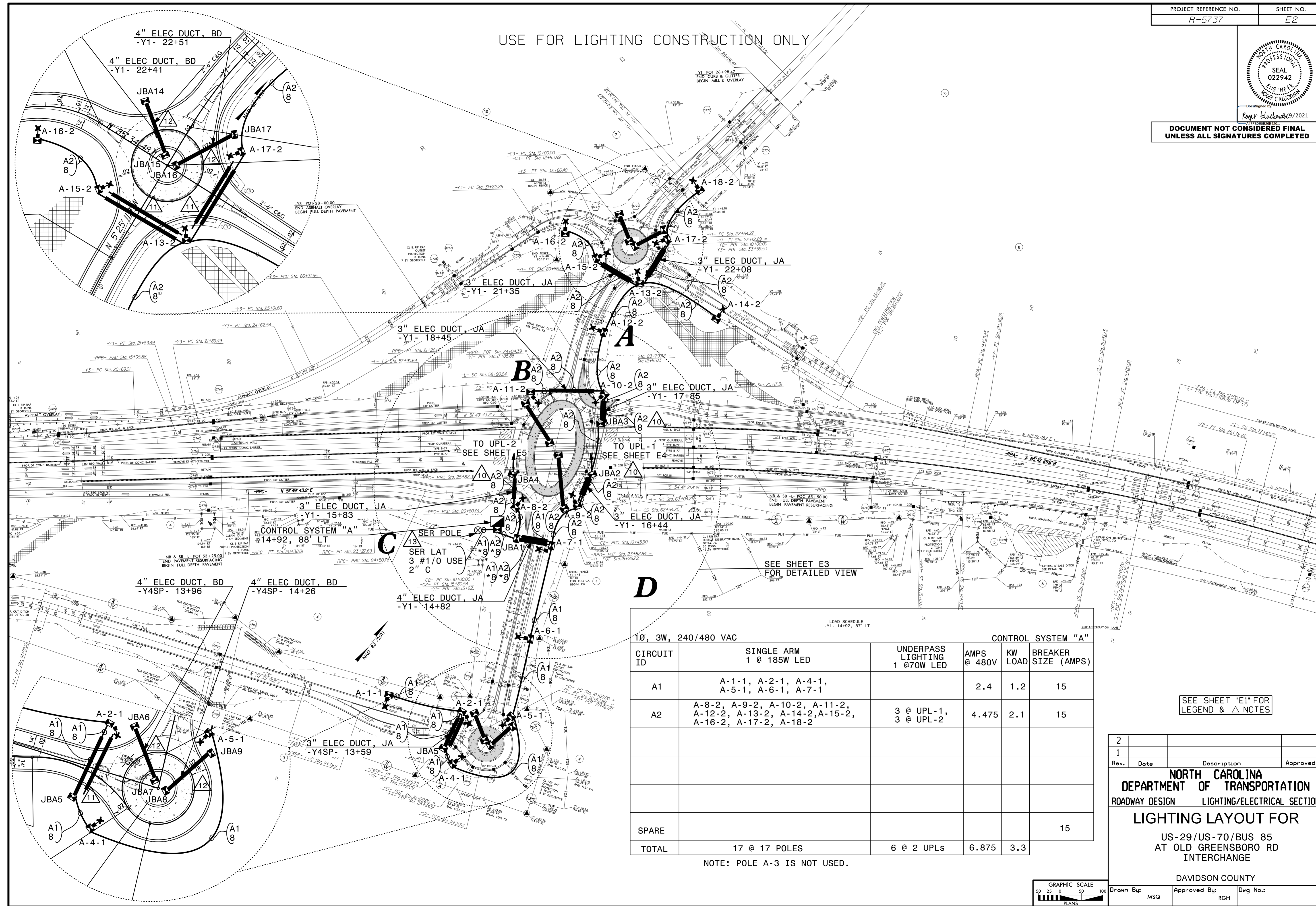


DOCUMENT NOT CONSIDERED FINAL
UNLESS ALL SIGNATURES COMPLETED

USE FOR LIGHTING CONSTRUCTION ONLY



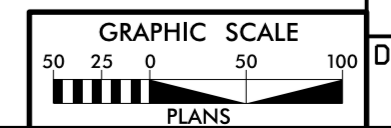
LOAD SCHEDULE
-Y1- 14+92, 87' LT

		CONTROL SYSTEM "A"			
CIRCUIT ID	SINGLE ARM 1 @ 185W LED	UNDERPASS LIGHTING 1 @ 70W LED	AMPS @ 480V	KW LOAD	BREAKER SIZE (AMPS)
A1	A-1-1, A-2-1, A-4-1, A-5-1, A-6-1, A-7-1		2.4	1.2	15
A2	A-8-2, A-9-2, A-10-2, A-11-2, A-12-2, A-13-2, A-14-2, A-15-2, A-16-2, A-17-2, A-18-2	3 @ UPL-1, 3 @ UPL-2	4.475	2.1	15
SPARE					15
TOTAL	17 @ 17 POLES	6 @ 2 UPLs	6.875	3.3	

NOTE: POLE A-3 IS NOT USED.

SEE SHEET "E1" FOR
LEGEND & Δ NOTES

2			
1			
Rev.	Date	Description	Approved
NORTH CAROLINA DEPARTMENT OF TRANSPORTATION ROADWAY DESIGN LIGHTING/ELECTRICAL SECTION LIGHTING LAYOUT FOR US-29/US-70/BUS 85 AT OLD GREENSBORO RD INTERCHANGE DAVIDSON COUNTY			
Drawn By:	MSQ	Approved By:	RGH
Dwg No.:			



28-JUL-2021 13:56 Z:\Div\Projects\Lighting\LightingElectrical\Lighting\Lighting\LE_DSN E2 and E3.dgn msquadr1 AT R0-303073