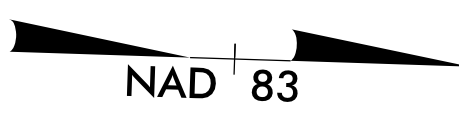
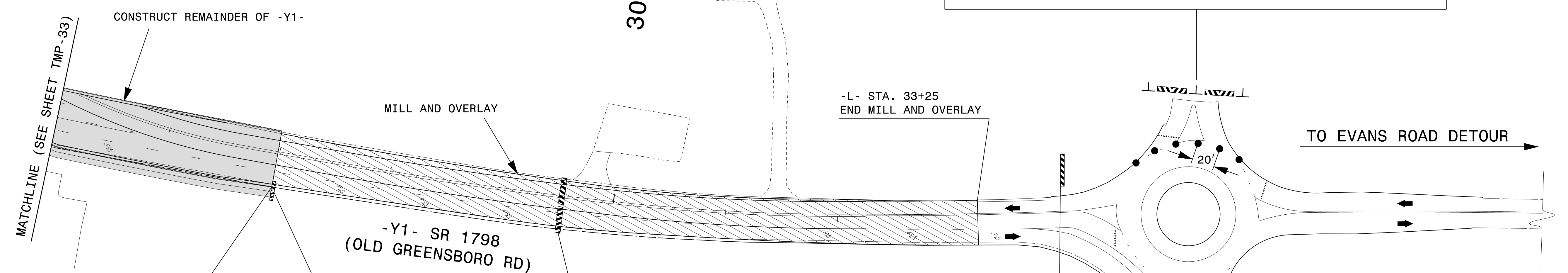
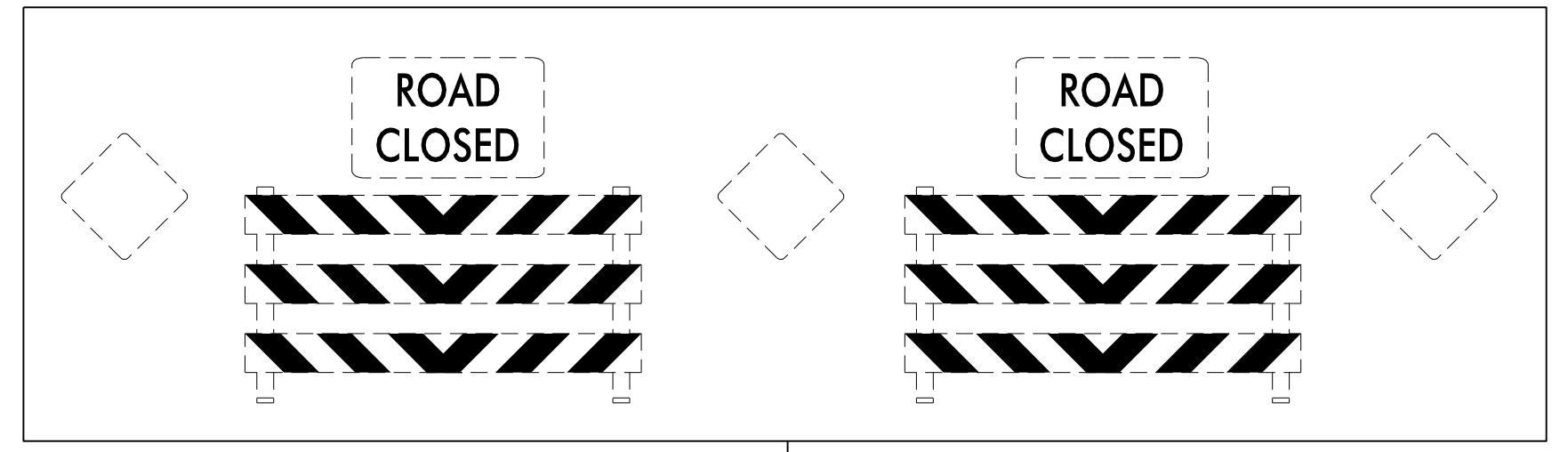


SEE ICT FOR WORK THIS SHEET  
PERFORMED UNDER A ROAD CLOSURE

SEE SHEET TMP-36  
FOR TEMPORARY MARKINGS

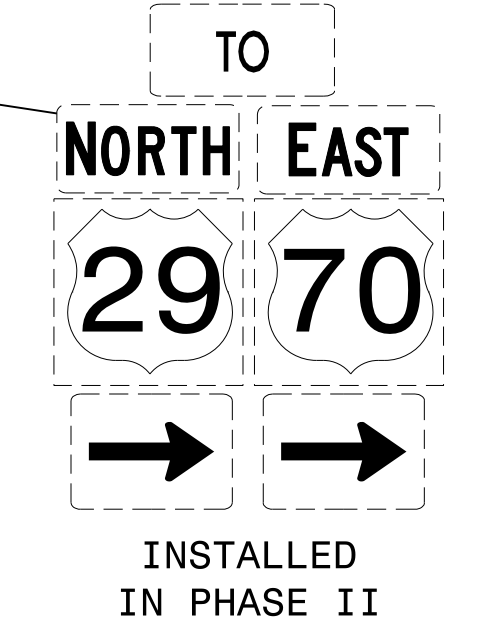
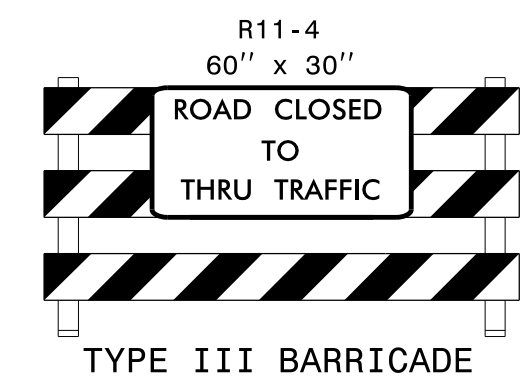
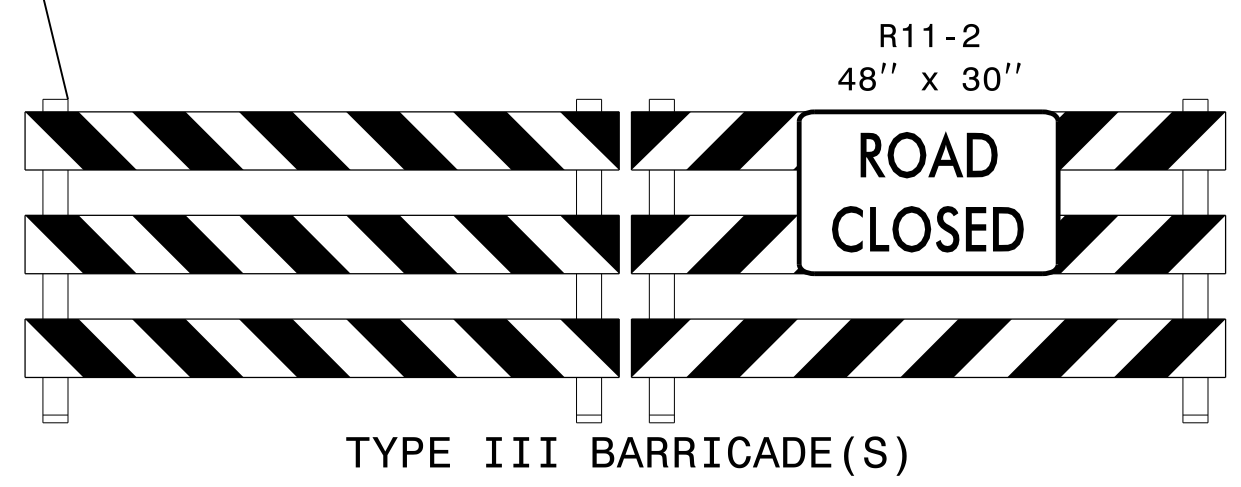
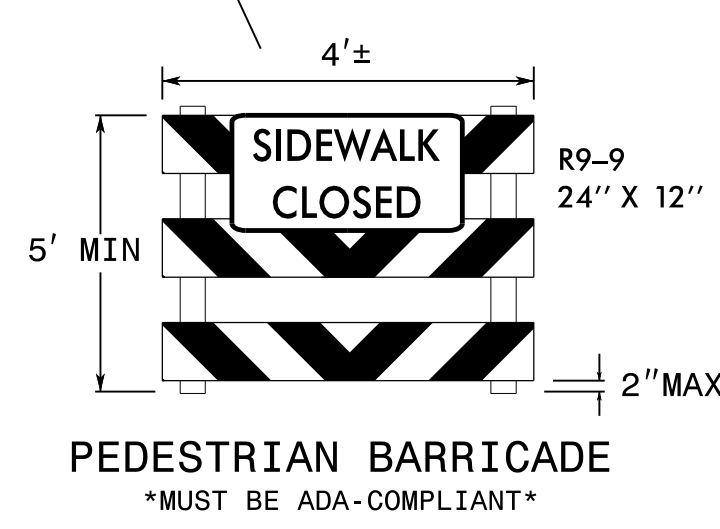


RETAIN EXISTING BARRICADES AND END-OF-ROAD SIGNS



-Y1- POT 26+98  
END CURB & GUTTER  
BEGIN MILL & OVERLAY

-Y1- SR 1798  
(OLD GREENSBORO RD)



MOTORISTS WISHING TO ACCESS NB US 29 / EB US 70  
WILL UTILIZE THE EVANS ROAD DETOUR SHOWN ON SHEET  
TMP-22. CONTRACTOR TO MAINTAIN APPLICABLE  
DETOUR SIGNING AND DEVICES.

04-AUG-2021 08:47 P:\5005407\CAD\CIVIL\5737\Traffic\TrafficControl\Plans\Alternative\5737\_TCP\_TCP\_34.dgn AT PF2JAC4N mlshok

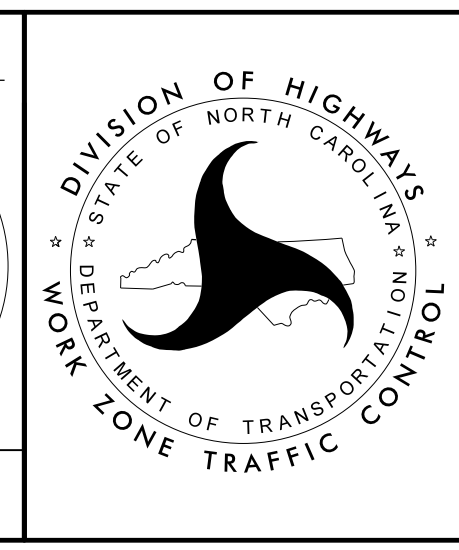


2610 WYCLIFF ROAD  
SUITE 410  
RALEIGH, NC 27607  
PHONE: 919.881.9939  
NC COA No. F-0929

APPROVED: \_\_\_\_\_  
DATE: \_\_\_\_\_

SEAL

**DOCUMENT NOT CONSIDERED FINAL  
UNLESS ALL SIGNATURES COMPLETED**



**PHASE III DETAIL**