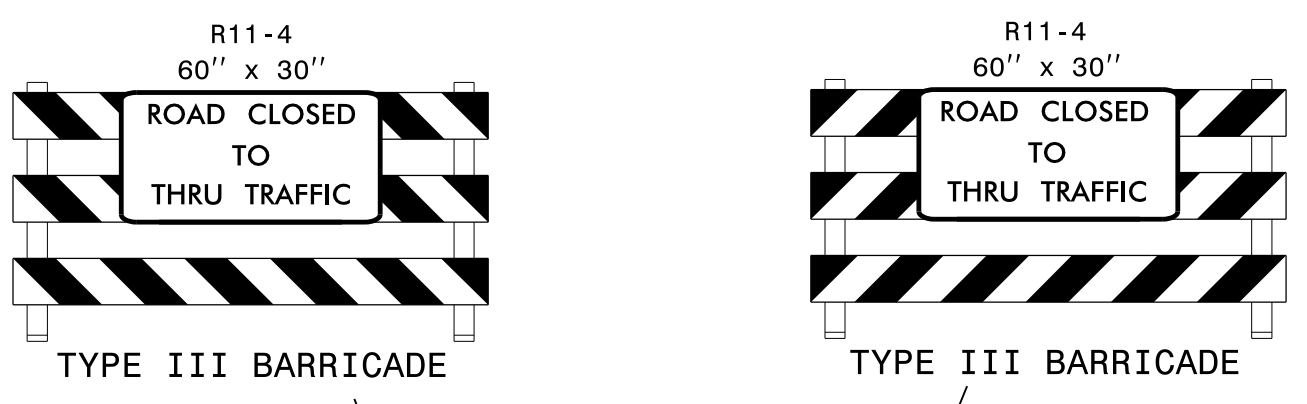
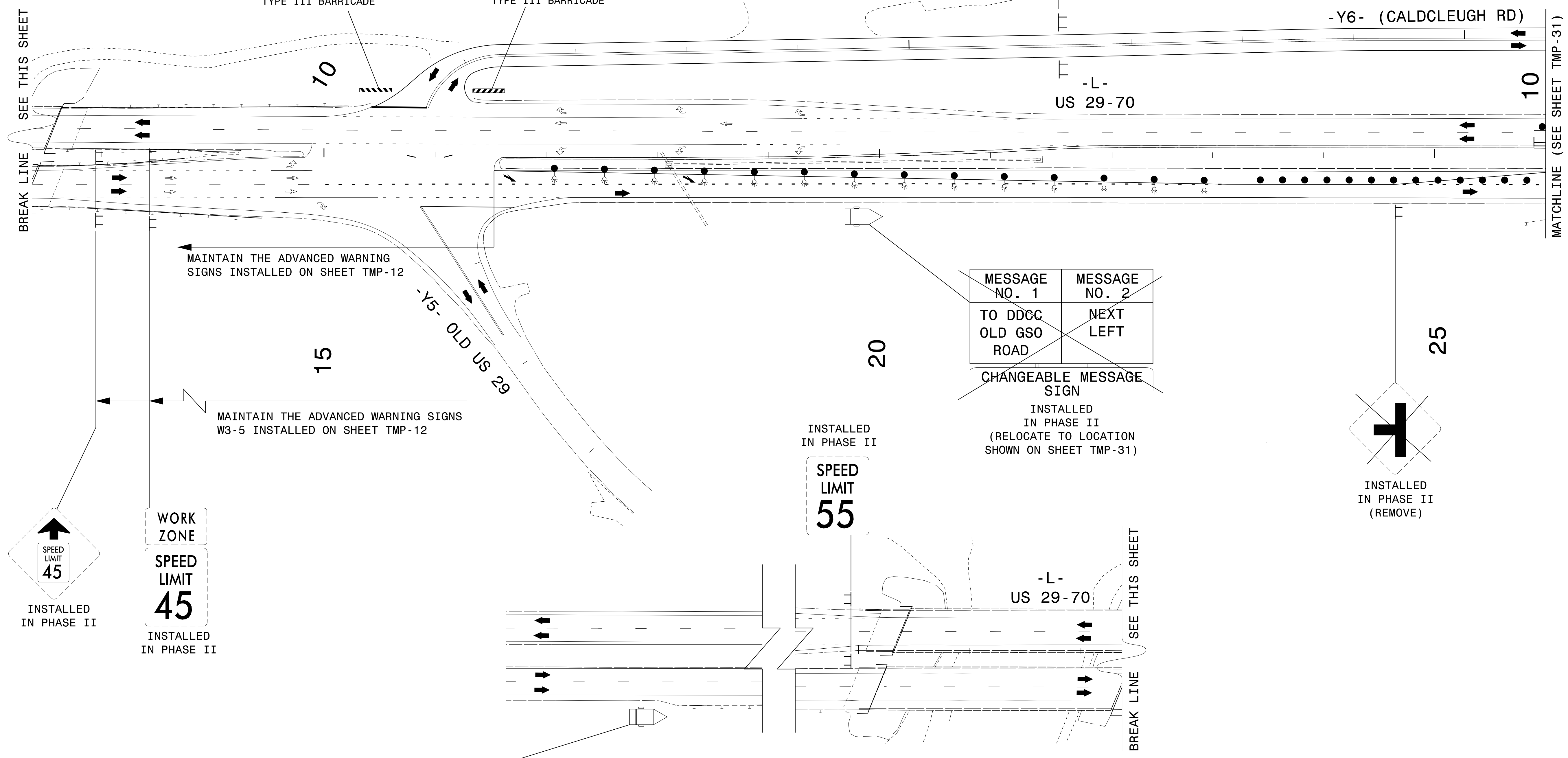
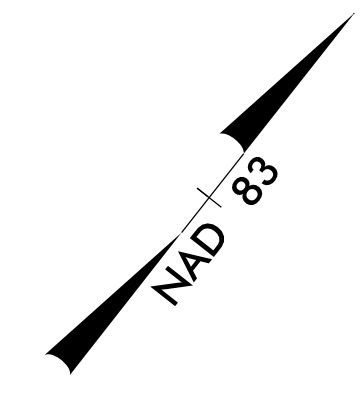


INSTALLED DURING
PHASE II
(REMOVE DURING THIS PHASE AND STEP.
REINSTALL AT THIS LOCATION FOR WORK
BEING PERFORMED ON SHEETS TMP-33
AND TMP-35.)



INSTALLED DURING
PHASE II (REMOVE)



MAINTAIN THE ADVANCED WARNING
SIGNS INSTALLED ON SHEET TMP-12

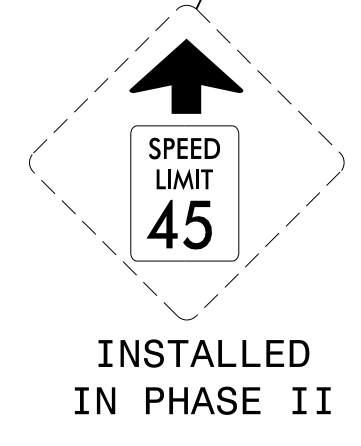
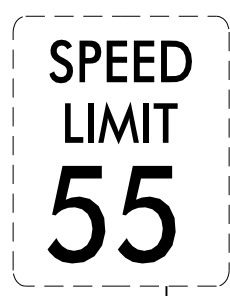
MAINTAIN THE ADVANCED WARNING SIGNS
W3-5 INSTALLED ON SHEET TMP-12

MESSAGE NO. 1	MESSAGE NO. 2
TO DDCC OLD GSO ROAD	NEXT LEFT

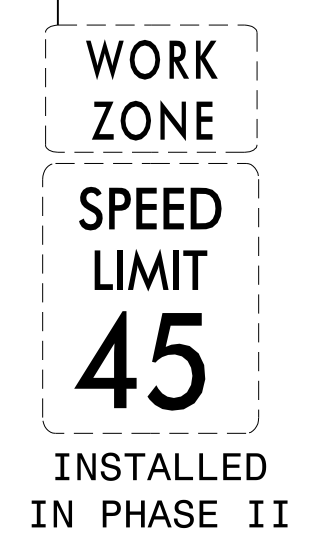
CHANGEABLE MESSAGE
SIGN

INSTALLED
IN PHASE II
(RELOCATE TO LOCATION
SHOWN ON SHEET TMP-31)

INSTALLED
IN PHASE II



INSTALLED
IN PHASE II



MESSAGE NO. 1	MESSAGE NO. 2
NEW CLOSER ACCESS	FOR DDCC OLD GSO ROAD

CHANGEABLE MESSAGE
SIGN

13-JUL-2021 10:38
 P:\5006407\CAD\CIVIL\5737\TrafficControl\Plans\Alternative\5737_TCP_TCP_30.dgn
 AT PCQUAT3J
 abeshears

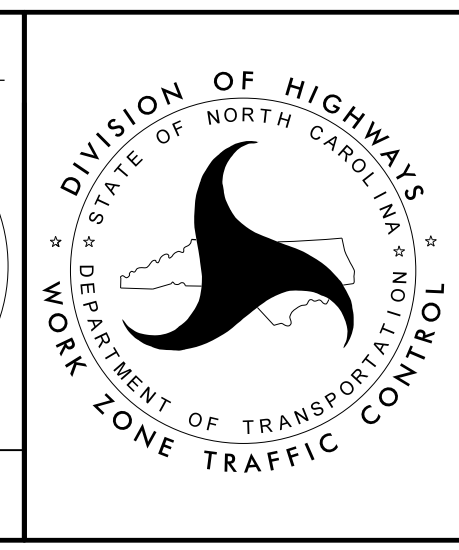


2610 WYCLIFF ROAD
SUITE 410
RALEIGH, NC 27607
PHONE: 919.881.9939
NC COA No. F-0929

APPROVED: _____
DATE: _____

SEAL

**DOCUMENT NOT CONSIDERED FINAL
UNLESS ALL SIGNATURES COMPLETED**



PHASE III DETAIL