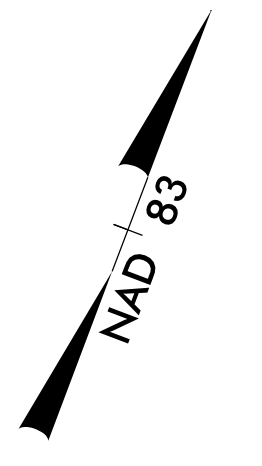


MESSAGE NO. 1	MESSAGE NO. 2
LANE SHIFT AHEAD	MAX SAFE SPEED 45 MPH

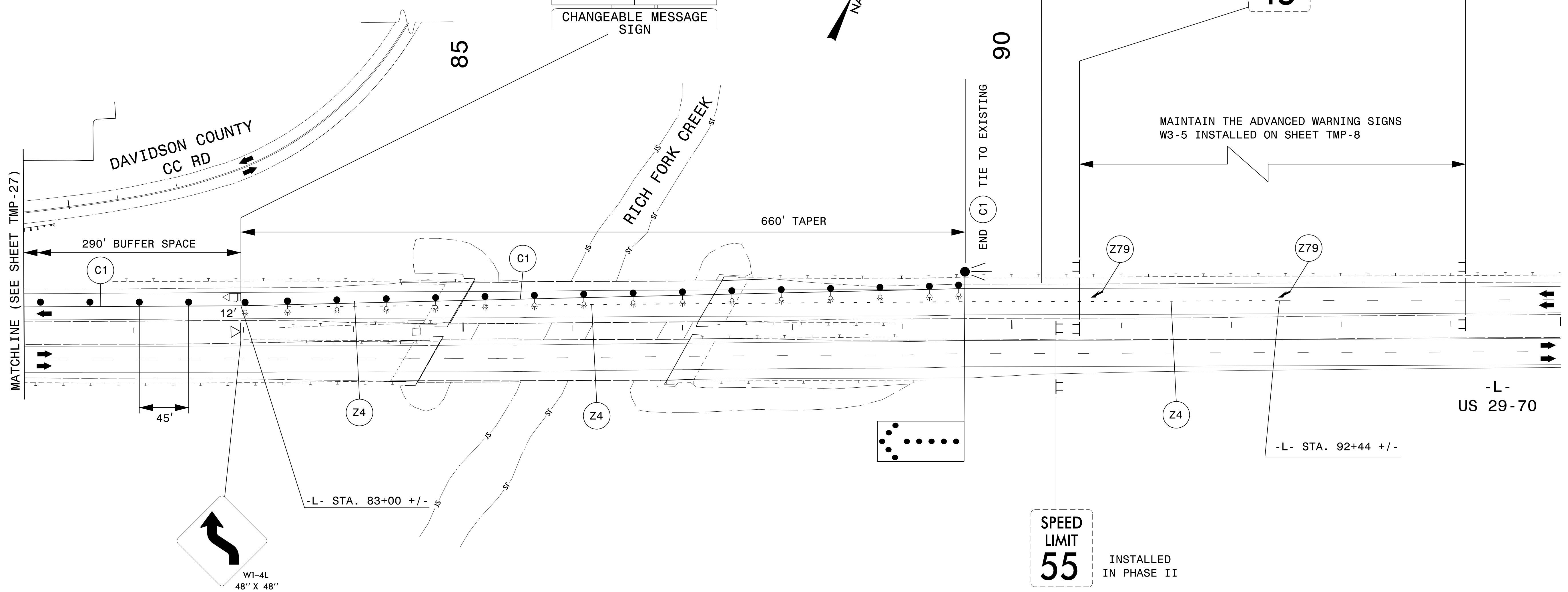
CHANGEABLE MESSAGE SIGN



REFER TO RSD 1101.02, SHEET 3 OF 14, FOR LANE CLOSURE DETAIL, SIGNING AND DEVICES

WORK ZONE
SPEED LIMIT 45
INSTALLED IN PHASE II

SPEED LIMIT 45
INSTALLED IN PHASE II



MATCHLINE (SEE SHEET TMP-27)

290' BUFFER SPACE

660' TAPER

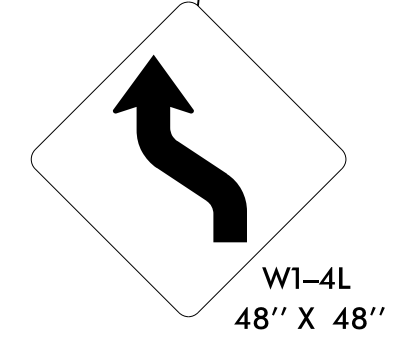
MAINTAIN THE ADVANCED WARNING SIGNS W3-5 INSTALLED ON SHEET TMP-8

END C1 TIE TO EXISTING

-L- US 29-70

-L- STA. 92+44 +/-

-L- STA. 83+00 +/-



TEMPORARY PAVEMENT MARKING	
PAVEMENT MARKING LINES:	
C1 SOLID WHITE EDGELINE	TYPE 4 REMOVABLE TAPE (4")
Z4 WZ PERFORMANCE PM WHITE 3 FT / 9 FT MINISKIP	(4")
PAVEMENT MARKING SYMBOLS AND CHARACTERS:	
Z79 WZ PERFORMANCE PM MERGE ARROW	

SPEED LIMIT 55
INSTALLED IN PHASE II

04-AUG-2021 08:43 P:\50054071\CAD\CIVIL\5737\TrafficControl\CP\Plans\Alternate\N5737_TCP_28.dgn AT PF2JAC4N mishok

2610 WYCLIFF ROAD
SUITE 410
RALEIGH, NC 27607
PHONE: 919.881.9939
NC COA No. F-0929

APPROVED: _____			<h2>PHASE III DETAIL</h2>
DATE: _____			
<p>SEAL</p> <p>DOCUMENT NOT CONSIDERED FINAL UNLESS ALL SIGNATURES COMPLETED</p>			