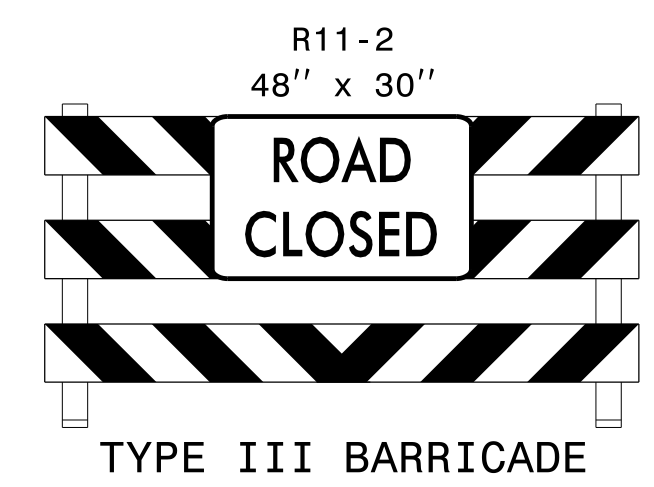
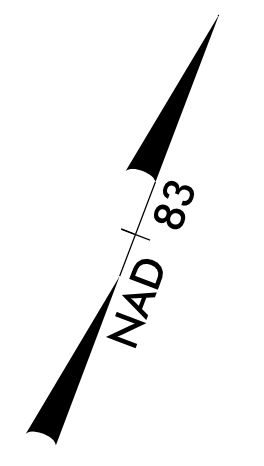
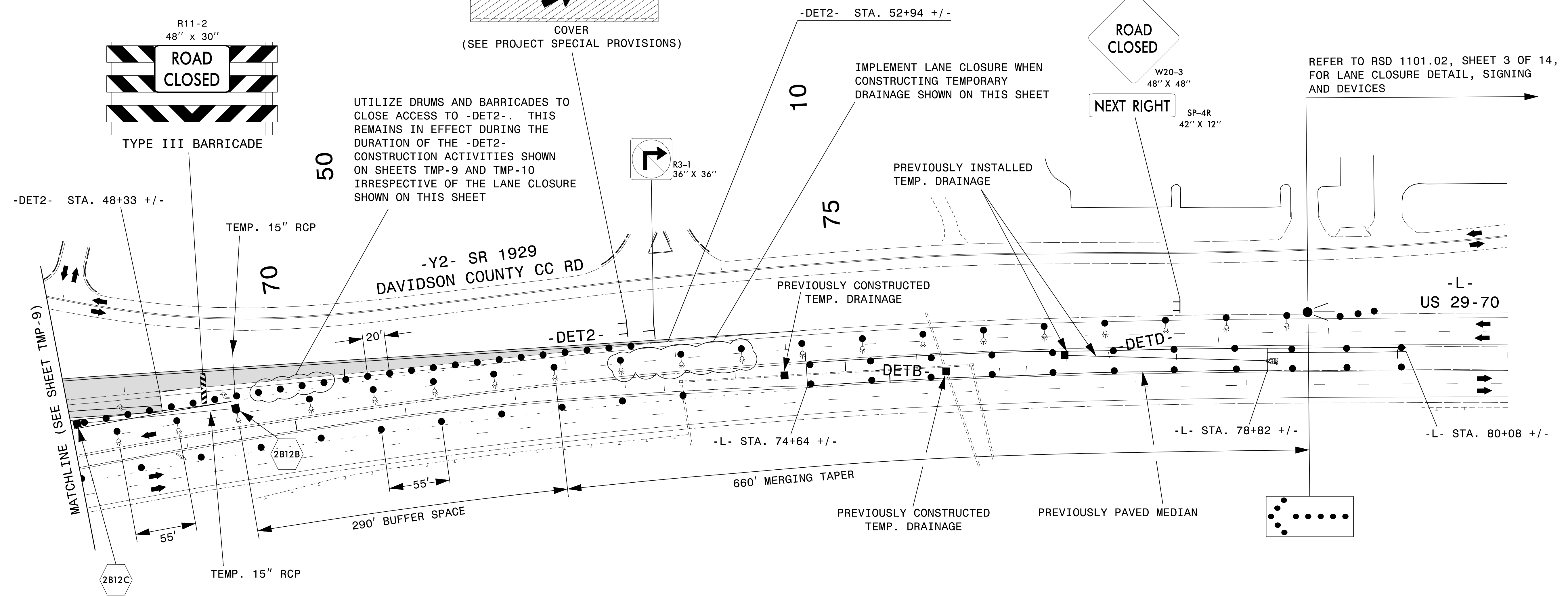


SEE SHEET TMP-21 FOR SIGNING AND DETOUR ROUTE NEEDED TO ACCESS THE COLLEGE DURING RAMP CLOSURE



UTILIZE DRUMS AND BARRICADES TO CLOSE ACCESS TO -DET2-. THIS REMAINS IN EFFECT DURING THE DURATION OF THE -DET2- CONSTRUCTION ACTIVITIES SHOWN ON SHEETS TMP-9 AND TMP-10 IRRESPECTIVE OF THE LANE CLOSURE SHOWN ON THIS SHEET



REFER TO RSD 1101.02, SHEET 3 OF 14, FOR LANE CLOSURE DETAIL, SIGNING AND DEVICES

PLACE WESTBOUND -L- TRAFFIC IN SINGLE LANE AS SHOWN ON SHEETS TMP-9 AND TMP-10 DURING CONSTRUCTION OF TEMPORARY DRAINAGE STRUCTURES 2B12B, 2B12C AND THE TEMP. 15\"/>

2B12B USING THE LANE CLOSURE SHOWN ON THIS SHEET, CONSTRUCT TEMP. JB TO A POINT WHERE IT CAN BE QUICKLY COMPLETED WHEN TRAFFIC IS SHIFTED TO -DET2- ALIGNMENT IN PHASE II. UNDER THE DIRECTION OF THE ENGINEER, COVER INCOMPLETED TEMP. JB SO THAT EXISTING TRAVEL LANE CAN BE REOPENED TO TRAFFIC UNTIL TRAFFIC IS SHIFTED TO -DET2- IN PHASE II.

2B12C USING THE LANE CLOSURE SHOWN ON THIS SHEET, CONSTRUCT TEMP. 2GI TO A POINT WHERE IT CAN BE QUICKLY COMPLETED WHEN TRAFFIC IS SHIFTED TO -DET2- ALIGNMENT IN PHASE II. UNDER THE DIRECTION OF THE ENGINEER, COVER INCOMPLETED TEMP. 2GI SO THAT EXISTING TRAVEL LANE CAN BE REOPENED TO TRAFFIC UNTIL TRAFFIC IS SHIFTED TO -DET2- IN PHASE II.

(SEE DETOUR PLANS FOR TEMPORARY DRAINAGE DETAILS)

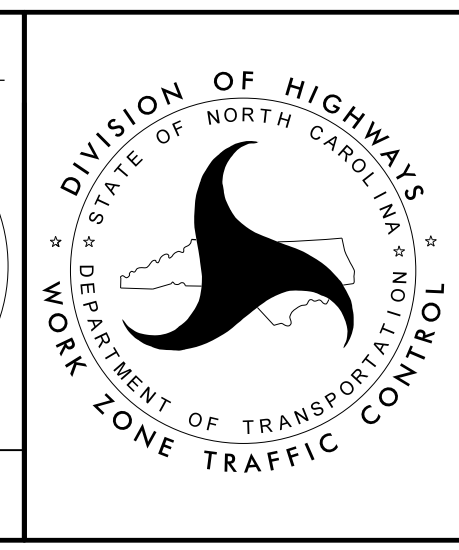


2610 WYCLIFF ROAD
SUITE 410
RALEIGH, NC 27607
PHONE: 919.881.9939
NC COA No. F-0929

APPROVED: _____
DATE: _____

SEAL

DOCUMENT NOT CONSIDERED FINAL UNLESS ALL SIGNATURES COMPLETED



PHASE I DETAIL

13-JUL-2021 10:37 P:\5006407\1\CAD\CIVIL\5737\Traffic\TrafficControl\CP\Plans\Alternative\5737_TCP_ICP_10.dgn AT_PCOUAT3J abeshears