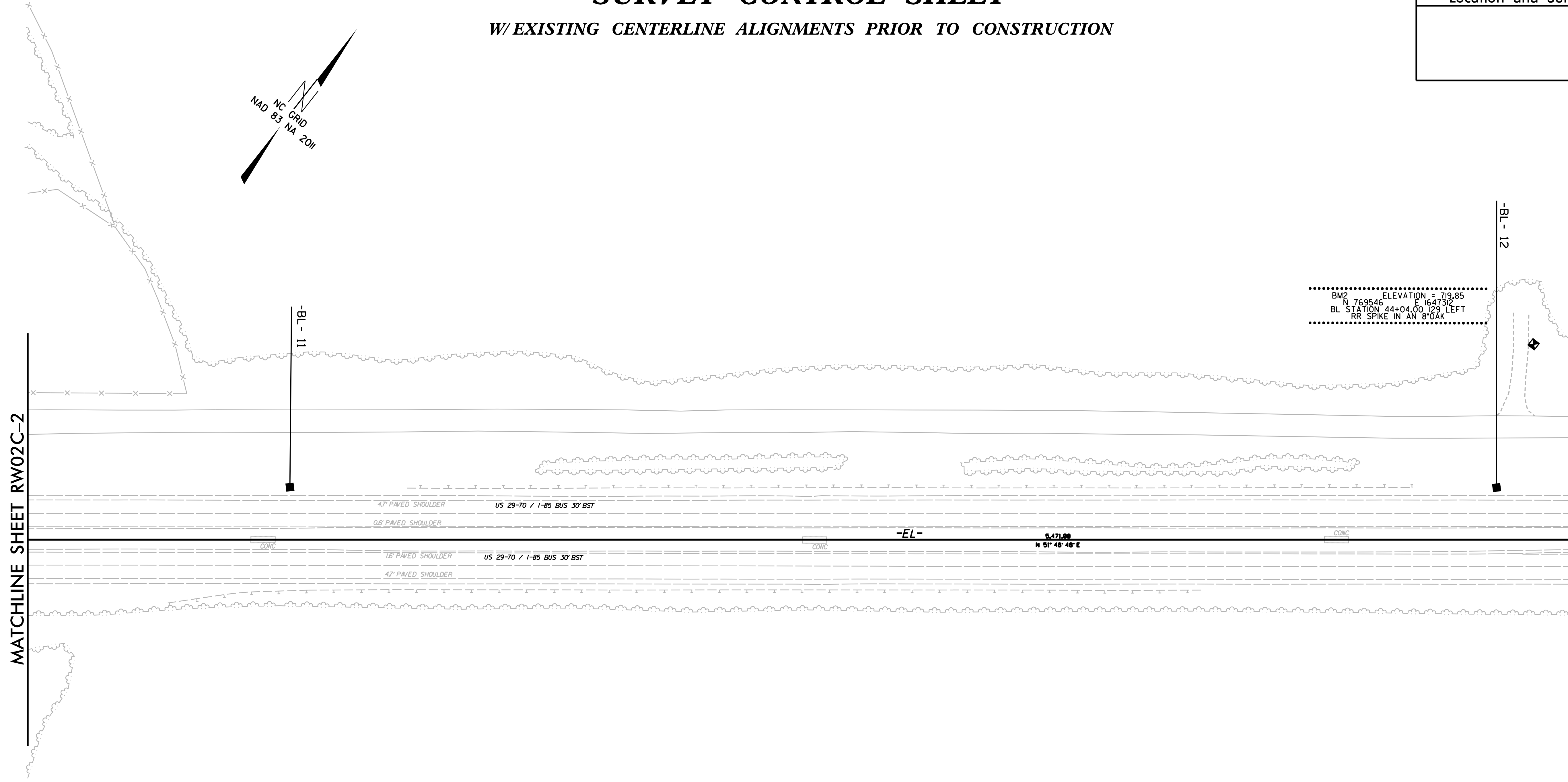
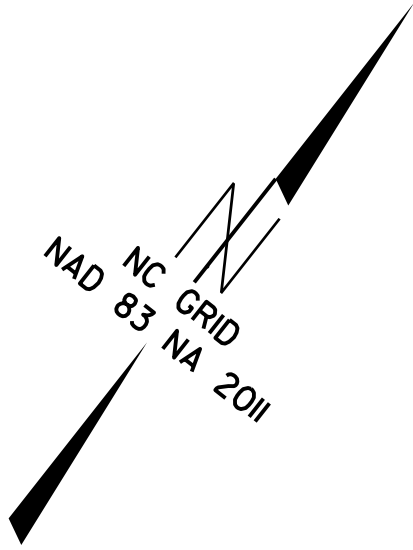


6/2/09

PROJECT REFERENCE NO.	SHEET NO.
R-5737	RW02C-3
Location and Surveys	

SURVEY CONTROL SHEET

W/ EXISTING CENTERLINE ALIGNMENTS PRIOR TO CONSTRUCTION



SEE SHEET RW02C-13
FOR FURTHER
ALIGNMENT DETAILS

NOTES:

1. PROJECT CONTROL WAS ESTABLISHED USING GNSS, THE GLOBAL NAVIGATION SATELLITE SYSTEM.
2. THE SURVEY CONTROL DATA FOR THIS PROJECT HAS BEEN COMPILED FROM VARIOUS SOURCES. IF FURTHER INFORMATION REGARDING PROJECT CONTROL IS NEEDED, PLEASE CONTACT THE LOCATION AND SURVEYS UNIT.

05-SEP-2019 10:42
S:\Units\Div\04\Winston\Ruths Computer\Rur-01\RS737\Julie\08-22-2019\tobechecked\RS737_ls_rw02c-3.dgn
mmotsinger AT LS-312635