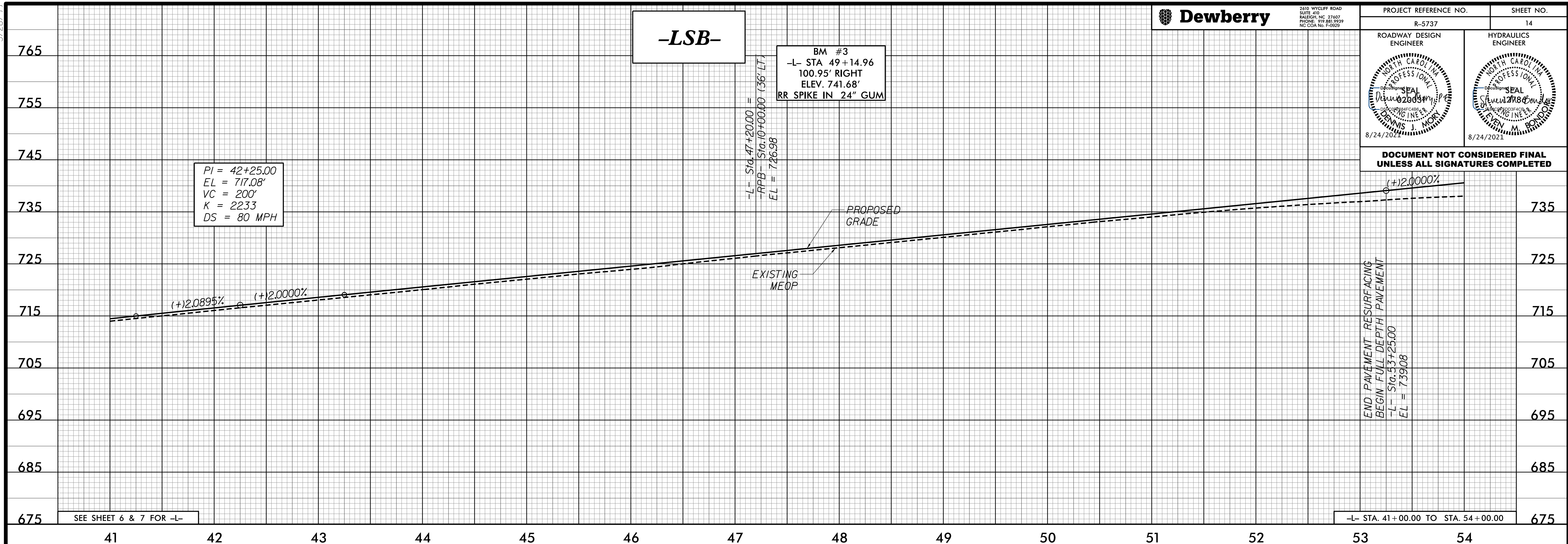


5/28/2021

**DOCUMENT NOT CONSIDERED FINAL  
UNLESS ALL SIGNATURES COMPLETED**



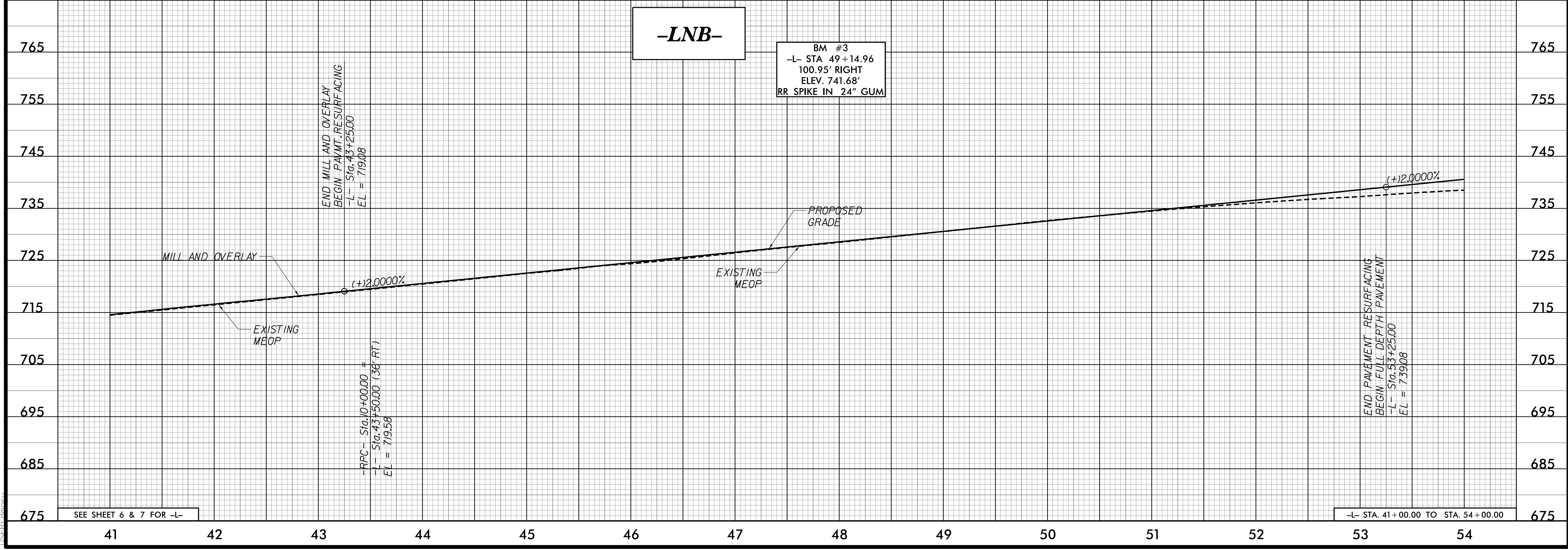
**-LNB-**

BM #3  
-L- STA 49+14.96  
100.95' RIGHT  
ELEV. 741.68'  
RR SPIKE IN 24" GUM

END MILL AND OVERLAY  
BEGIN PAINT RESURFACING  
-L- Sta. 43+25.00  
EL = 719.08

-RPC- Sta. 10+00.00 =  
-L- Sta. 43+50.00 (36' RT)  
EL = 719.58

END PAVEMENT RESURFACING  
BEGIN FULL DEPTH PAVEMENT  
-L- Sta. 53+25.00  
EL = 739.08



7/29/2021 8:20:45 PM  
C:\Users\jmorin\OneDrive\Documents\Projects\2021\05\20210529\RDY\_PFL14\_L.dgn