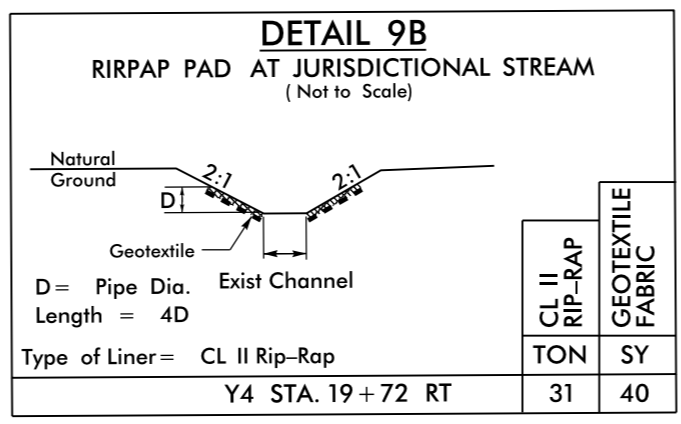
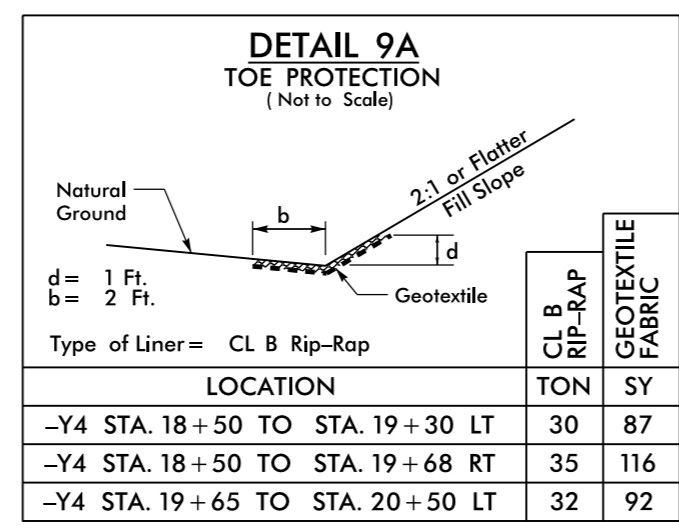
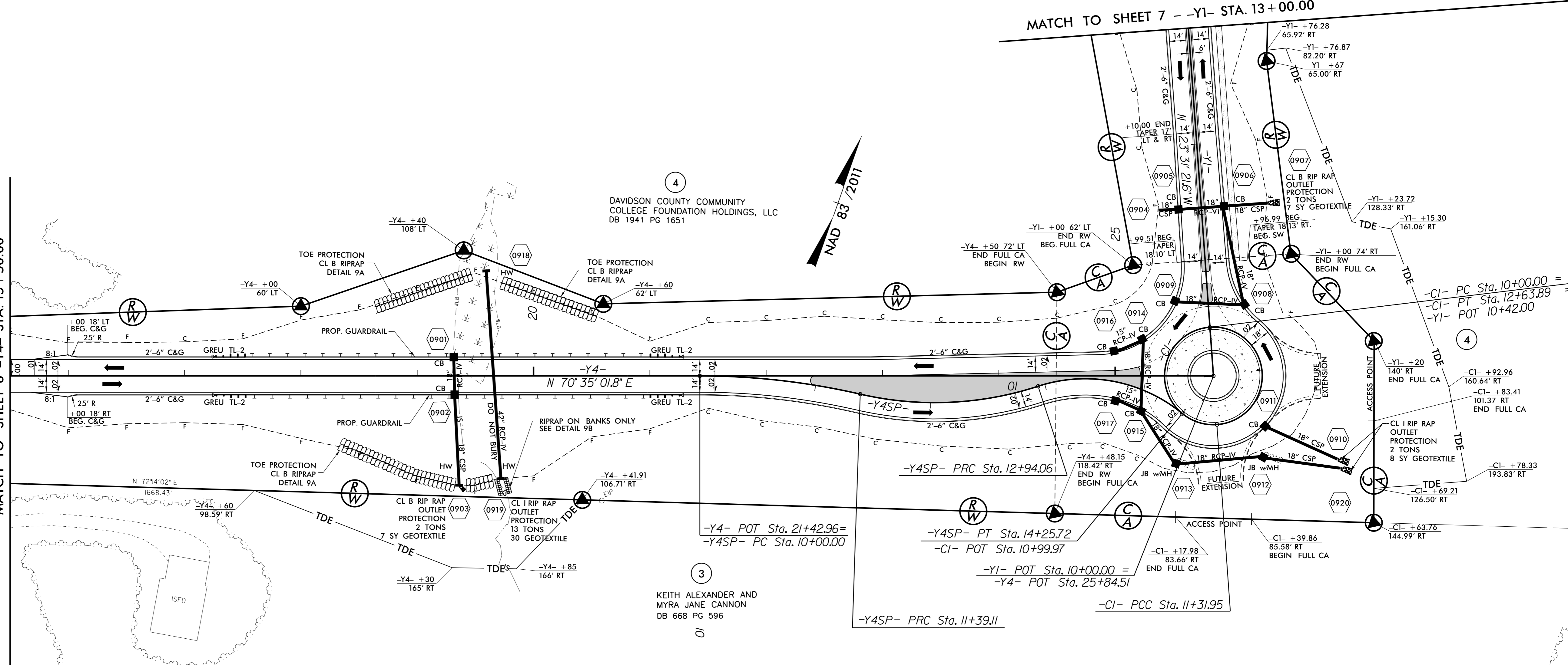


5/14/2021

PROJECT REFERENCE NO. R-5737		SHEET NO. 9
RW SHEET NO.		
ROADWAY DESIGN ENGINEER	HYDRAULICS ENGINEER	
8/27/2021	8/27/2021	
DOCUMENT NOT CONSIDERED FINAL UNLESS ALL SIGNATURES COMPLETED		

MATCH TO SHEET 6 -Y4- STA. 15+50.00

MATCH TO SHEET 7 -Y1- STA. 13+00.00



CURVE DATA FOR -Y4SP-

PI Sta	Delta	D	L	T	R	Se
10+69.85	12° 58' 51.8" (RT)	9° 19' 53.6"	139.11'	69.85'	614.00'	0.02
12+18.54	31° 02' 34.9" (LT)	20° 02' 00.6"	154.96'	79.43'	286.00'	0.02
13+66.06	57° 34' 58.4" (RT)	43° 44' 14.1"	131.66'	71.99'	131.00'	0.02

CURVE DATA FOR -CI-

PI Sta	Delta	D	L	T	R
10+00.00	360° 00' 00.0" (LT)	136° 25' 06.7"	263.90'	0.00'	42.00'

SEE SHEET 22 FOR -CI- PROFILE
 SEE SHEET 23 FOR -Y1- PROFILE
 SEE SHEET 26 FOR -Y4- PROFILE
 FOR ROUNDABOUT CI DETAILS: SEE SHEET 2B-1 & 2B-4
 FOR FINAL PAYMENT PLAN ELEVATIONS, SUPERELEVATION,
 AND CONC. ISLAND DETAILS WITH STATION & OFFSETS.

LEGEND

- 5" MONOLITHIC CONCRETE ISLAND
- 7" CONCRETE TRUCK APRON
- 4" CONCRETE SIDEWALK

7/29/2021 6:44:58 PM I:\S737\RDY_PSH09.dgn