



2410 WYCLIFF ROAD  
SUITE 410  
RALEIGH, NC 27607  
PHONE: 919.883.9329  
NC CCA No. F-0929

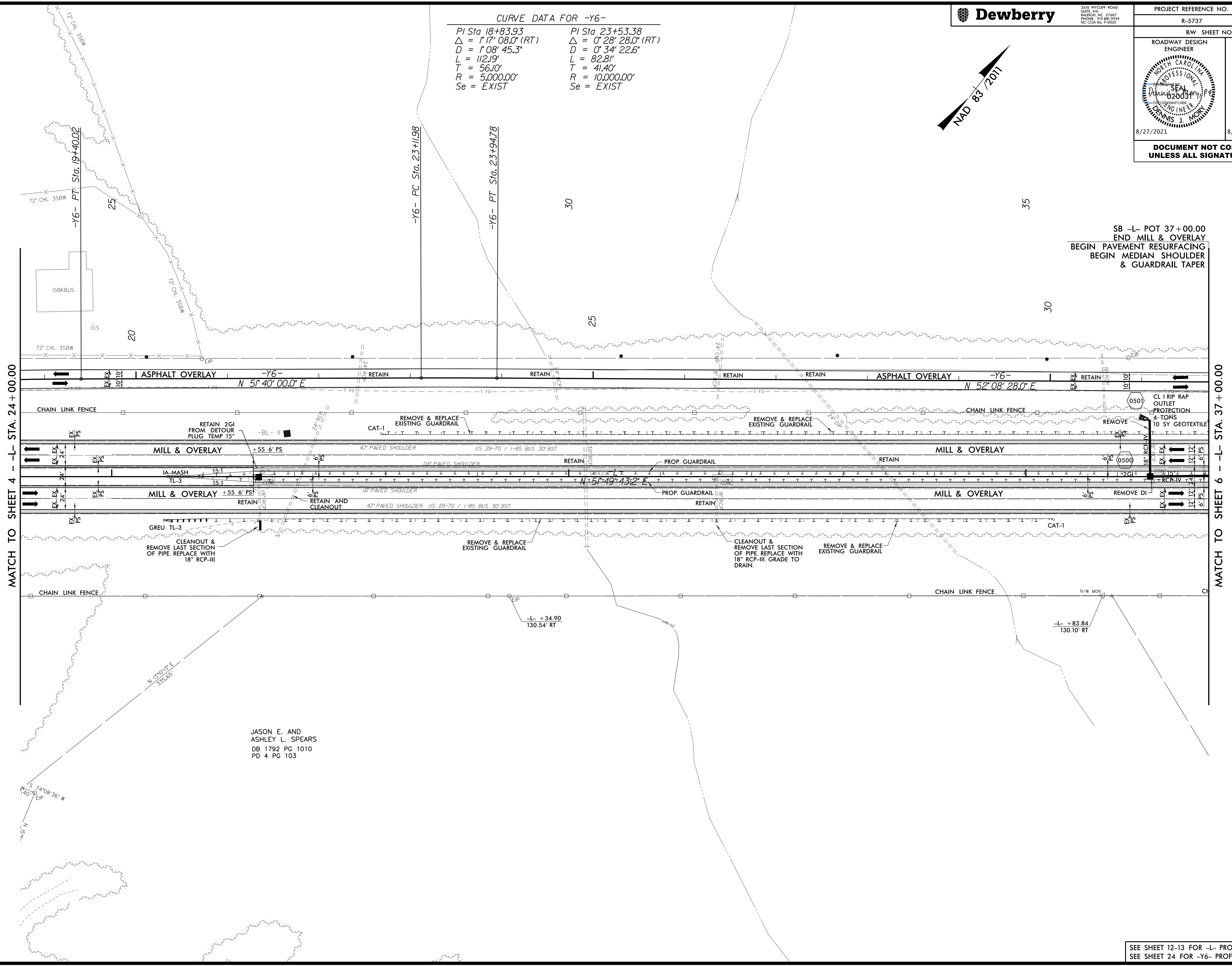
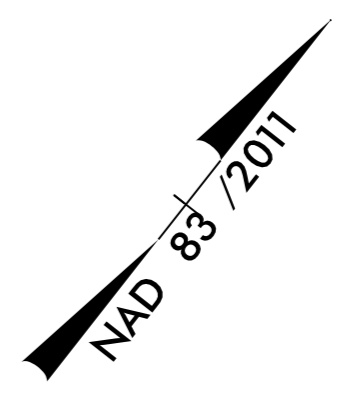
|                       |           |
|-----------------------|-----------|
| PROJECT REFERENCE NO. | SHEET NO. |
| R-5737                | 5         |

|                         |                     |
|-------------------------|---------------------|
| RW SHEET NO.            |                     |
| ROADWAY DESIGN ENGINEER | HYDRAULICS ENGINEER |
|                         |                     |
| 8/27/2021               | 8/27/2021           |

**DOCUMENT NOT CONSIDERED FINAL  
UNLESS ALL SIGNATURES COMPLETED**

**CURVE DATA FOR -Y6-**

|                                    |                                    |
|------------------------------------|------------------------------------|
| PI Sta 18+83.93                    | PI Sta 23+53.38                    |
| $\Delta = 1^{\circ}17'08.0''$ (RT) | $\Delta = 0^{\circ}28'28.0''$ (RT) |
| $D = 1^{\circ}08'45.3''$           | $D = 0^{\circ}34'22.6''$           |
| $L = 112.19'$                      | $L = 82.81'$                       |
| $T = 56.10'$                       | $T = 41.40'$                       |
| $R = 5,000.00'$                    | $R = 10,000.00'$                   |
| $Se = EXIST$                       | $Se = EXIST$                       |



SB -L- POT 37+00.00  
END MILL & OVERLAY  
BEGIN PAVEMENT RESURFACING  
BEGIN MEDIAN SHOULDER  
& GUARDRAIL TAPER

JASON E. AND  
ASHLEY L. SPEARS  
DB 1792 PG 1010  
PD 4 PG 103

SEE SHEET 12-13 FOR -L- PROFILE  
SEE SHEET 24 FOR -Y6- PROFILE