



2610 WYCLIFF ROAD
SUITE 410
RALEIGH, NC 27607
PHONE: 919.883.9329
NC CCA No. F-0029

PROJECT REFERENCE NO.	SHEET NO.
R-5737	4

R/W SHEET NO.	HYDRAULICS ENGINEER
ROADWAY DESIGN ENGINEER	SEAL

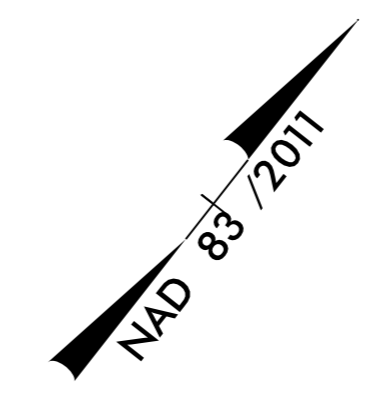
8/27/2021

8/27/2021

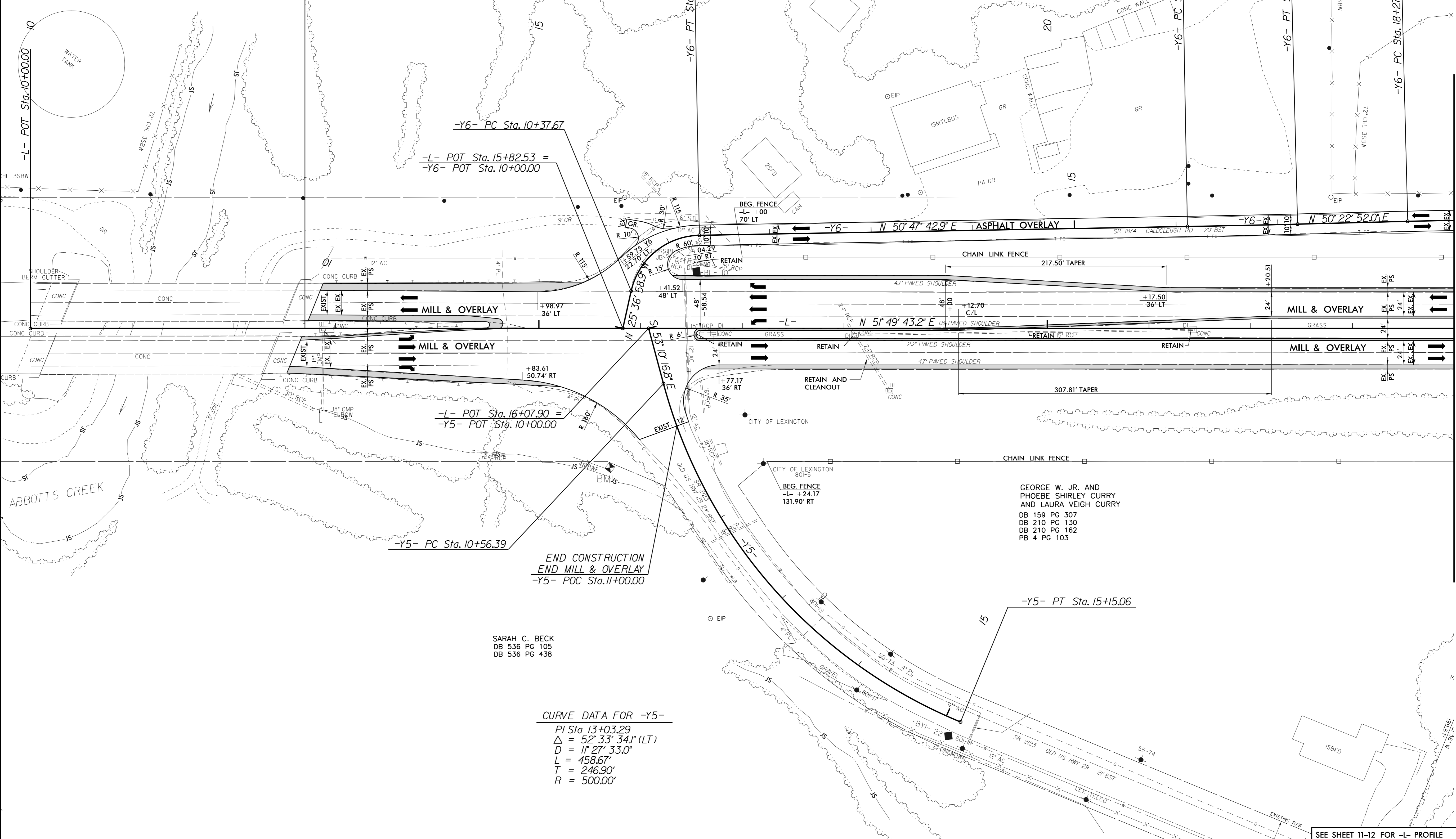
**DOCUMENT NOT CONSIDERED FINAL
UNLESS ALL SIGNATURES COMPLETED**

CURVE DATA FOR -Y6-

PI Sta 10+92.76	PI Sta 16+65.25
$\Delta = 76^\circ 24' 41.8''$ (RT)	$\Delta = 0^\circ 24' 50.8''$ (LT)
$D = 81^\circ 51' 04.0''$	$D = 0^\circ 22' 55.1''$
$L = 93.35'$	$L = 108.42'$
$T = 55.10'$	$T = 54.21'$
$R = 70.00'$	$R = 15,000.00'$
Se = EXIST	Se = EXIST



BEGIN TIP PROJECT R-5737
BEGIN MILL & OVERLAY
-L- POT Sta. 12+70.00



-Y6- PC Sta. 10+37.67
-L- POT Sta. 15+82.53 =
-Y6- POT Sta. 10+00.00

-L- POT Sta. 16+07.90 =
-Y5- POT Sta. 10+00.00

-Y5- PC Sta. 10+56.39

END CONSTRUCTION
END MILL & OVERLAY
-Y5- POC Sta. 11+00.00

SARAH C. BECK
DB 536 PG 105
DB 536 PG 438

CURVE DATA FOR -Y5-

PI Sta 13+03.29
$\Delta = 52^\circ 33' 34.1''$ (LT)
$D = 11^\circ 27' 33.0''$
$L = 458.67'$
$T = 246.90'$
$R = 500.00'$

GEORGE W. JR. AND
PHOEBE SHIRLEY CURRY
AND LAURA VEIGH CURRY
DB 159 PG 307
DB 210 PG 130
DB 210 PG 162
PB 4 PG 103

MATCH TO SHEET 5 - L- STA. 24+00.00

SEE SHEET 11-12 FOR -L- PROFILE
SEE SHEET 24 FOR -Y6- PROFILE