

24-JAN-2018 13:28 S:\Contracts\Special Details\Howerton\Double DI under Median Barrier.dgn
 Howerton AT USD-292595

5/14/99

STATE OF NORTH CAROLINA
 DEPT. OF TRANSPORTATION
 DIVISION OF HIGHWAYS
 RALEIGH, N.C.

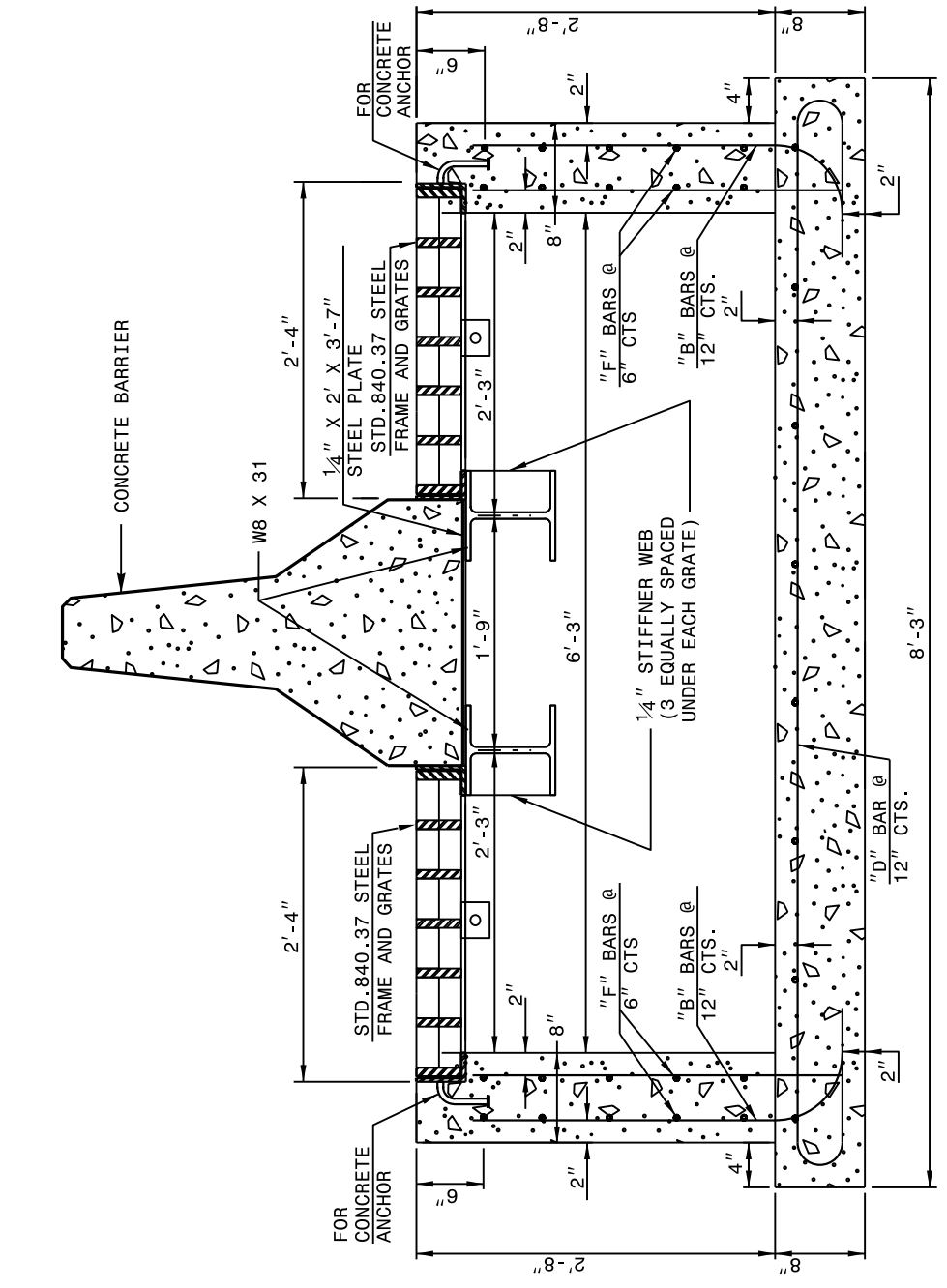
ENGLISH DETAIL DRAWING FOR
**BARRIER OVER TRAFFIC BEARING
 DOUBLE DROP INLET**

SHEET 1 OF 2
BARDDI

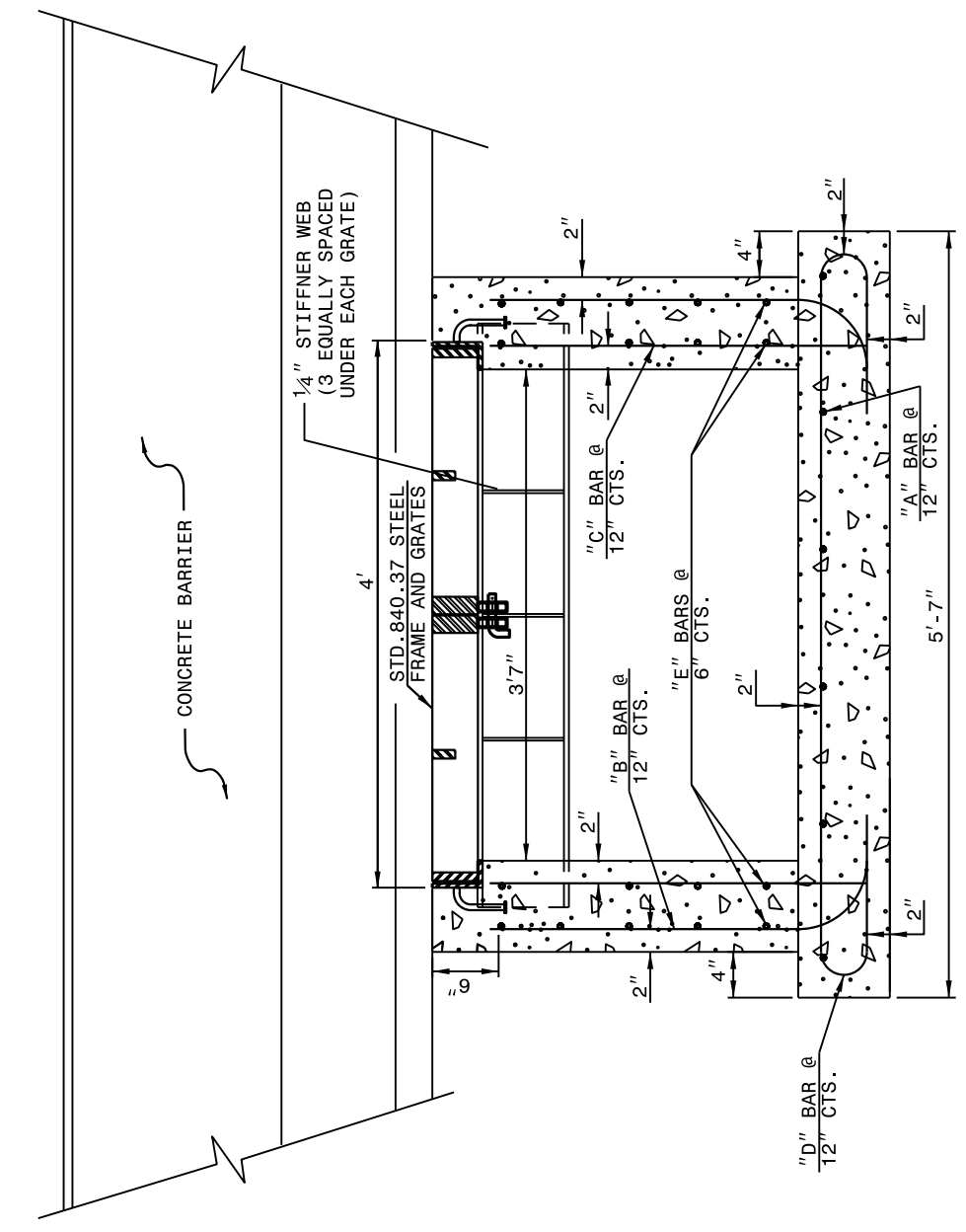
STATE OF NORTH CAROLINA
 DEPT. OF TRANSPORTATION
 DIVISION OF HIGHWAYS
 RALEIGH, N.C.

ENGLISH DETAIL DRAWING FOR
**BARRIER OVER TRAFFIC BEARING
 DOUBLE DROP INLET**

SHEET 1 OF 2
BARDDI



SECTION X-X



SECTION Y-Y

TRAFFIC BEARING DROP INLET

- NOTES:
 -HORIZONTAL AND VERTICAL DIMENSIONS MAY BE ADJUSTED AS THE FIELD CONDITIONS AND/OR ALTERNATE DESIGN REQUIRE.
 -MAXIMUM HEIGHT FOR THIS STRUCTURE IS 14".
 -MAKE ALL ADJUSTMENTS AS DIRECTED BY THE ENGINEER.
 -ANCHOR STEEL FRAME AND GRATES IN ACCORDANCE WITH DETAILS SHOWN.
 -NO BRICK RISERS ARE PERMITTED ON ANY PART OF THIS DRAINAGE STRUCTURE.

STATE OF NORTH CAROLINA
 DEPT. OF TRANSPORTATION
 DIVISION OF HIGHWAYS
 RALEIGH, N.C.

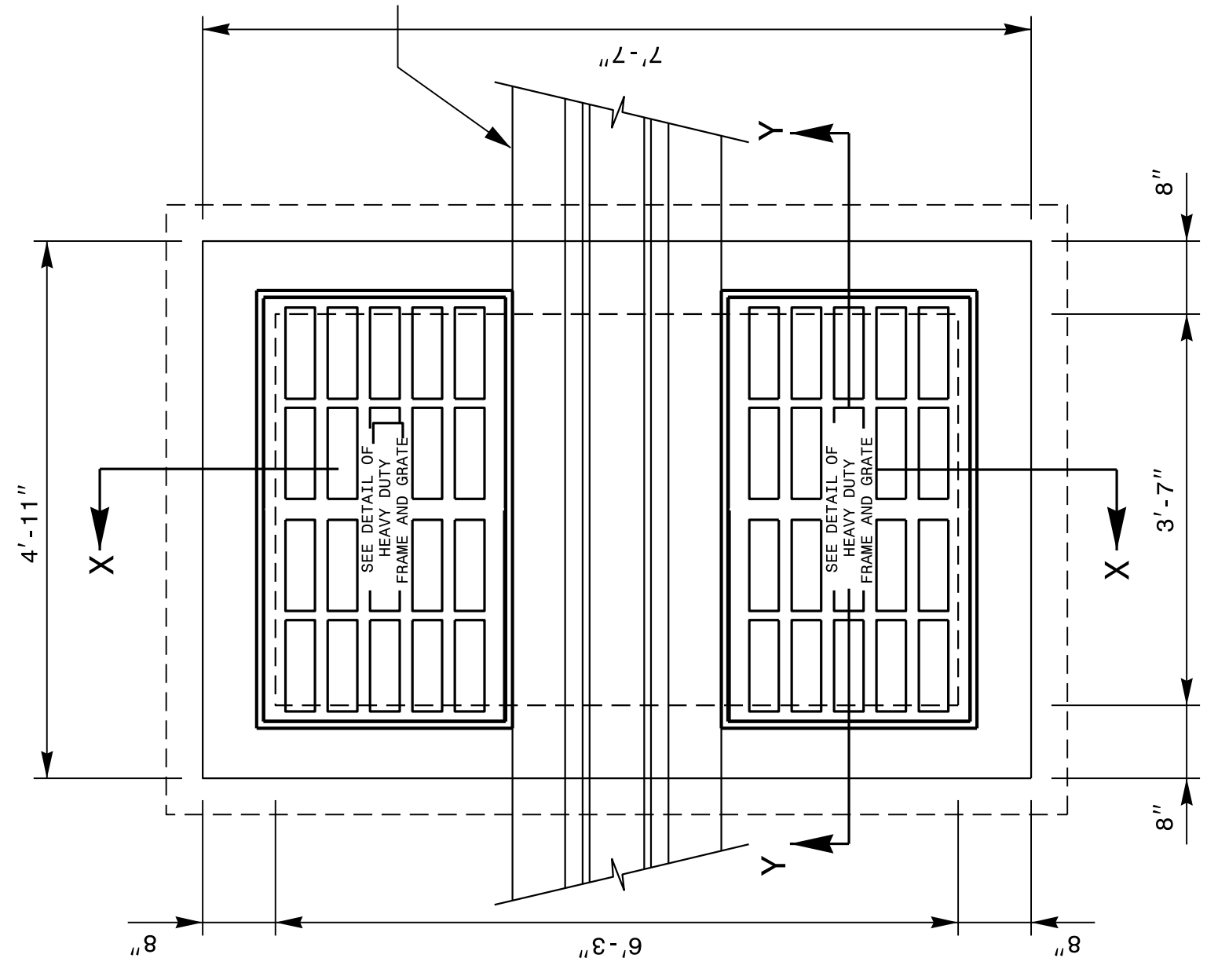
ENGLISH DETAIL DRAWING FOR
**BARRIER OVER TRAFFIC BEARING
 DOUBLE DROP INLET**

SHEET 2 OF 2
BARDDI

STATE OF NORTH CAROLINA
 DEPT. OF TRANSPORTATION
 DIVISION OF HIGHWAYS
 RALEIGH, N.C.

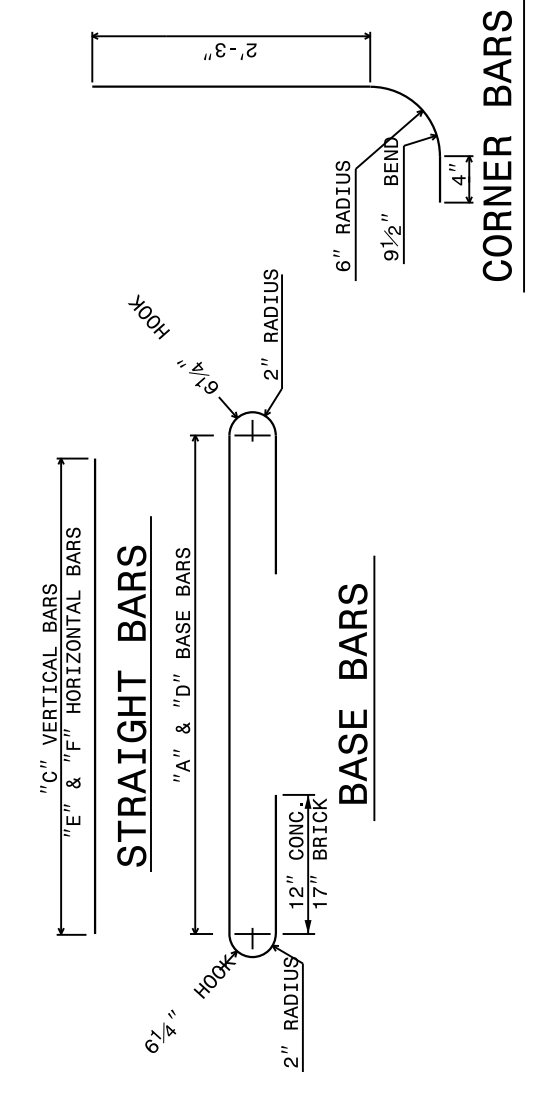
ENGLISH DETAIL DRAWING FOR
**BARRIER OVER TRAFFIC BEARING
 DOUBLE DROP INLET**

SHEET 2 OF 2
BARDDI

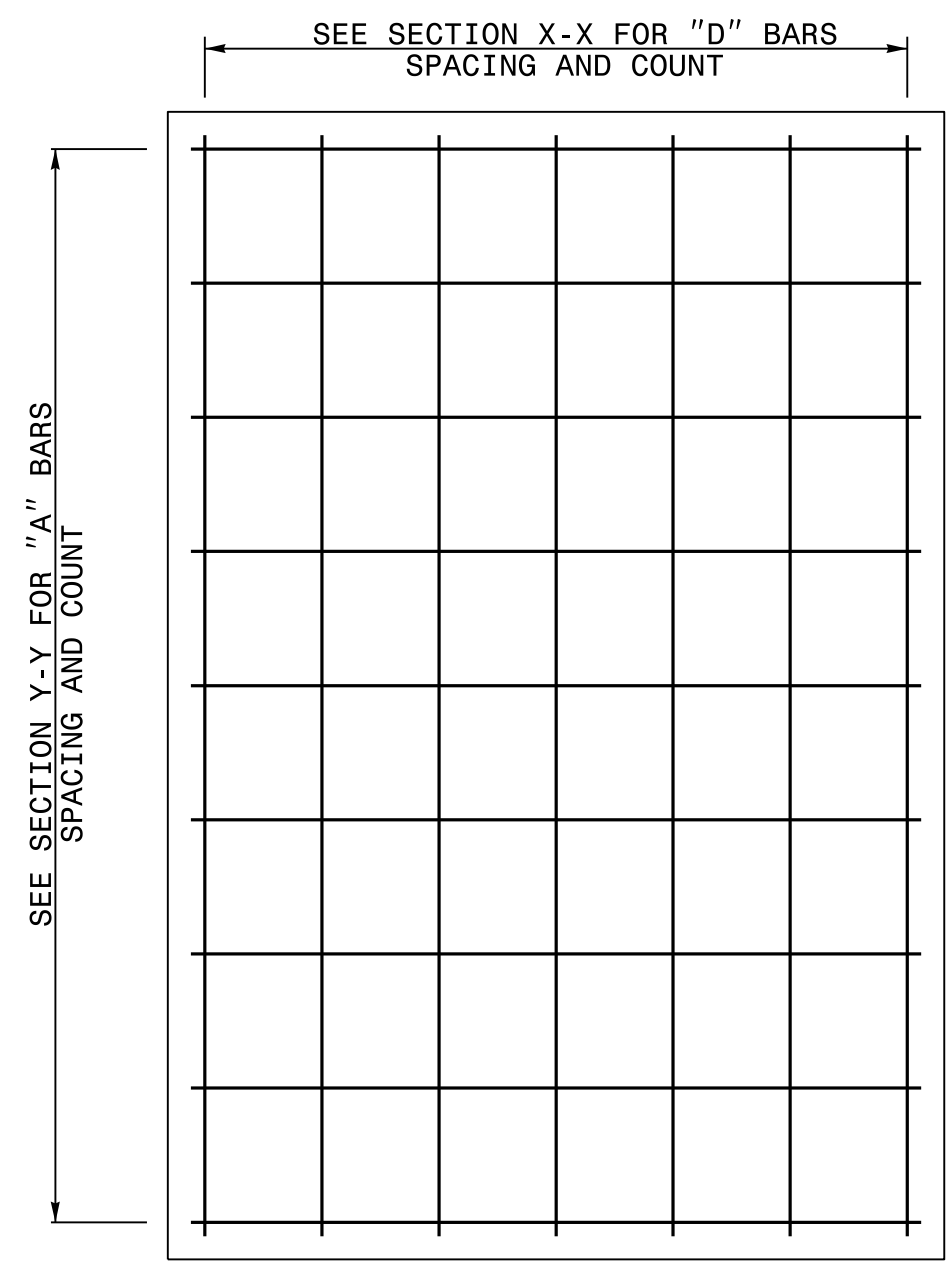


PLAN

COMMON		CONCRETE ALT.		BRICK ALT.		
BAR SIZE	LENGTH	QUANTITY	WEIGHT	LENGTH	QUANTITY	WEIGHT
#4	10'-7 1/2"	28	77.8	11'-10 1/2"	7	86.7
#5	3'-4 1/2"	28	89.6	3'-4 1/2"	28	98.6
#6	7'-11 1/2"	8	71.7	9'-2 1/2"	3	86.4
#8	7'-3"	20	158.2	7'-1 1/2"	10	74.3
#8	4'-7"	20	95.6	4'-5 1/2"	10	46.3
REFIN. STEEL (TOTAL WEIGHT (LBS.))		574.8		392.5		
CONCRETE IN BASE (CUBIC YARDS)		1.1		1.2		
CONCRETE IN WALLS (CUBIC YARDS)		-0.4		1.3		
CONCRETE TOTAL (CUBIC YARDS)		0.7		2.5		
BRICK IN WALLS (CUBIC YARDS)		-0.6		0.2		
CONCRETE IN WALL/FOOT OF HEIGHT		-0.6		0.2		
LBS. OF REIN. STEEL IN WALL/FOOT OF HEIGHT		107.0		77.5		



- GENERAL NOTES:
 -CONCRETE CORNERS TO BE CHAMFERED 1 INCH.
 -FORMS SHALL BE USED TO CONSTRUCT THE BOTTOM SLAB.
 -IF PIPES ARE SET IN THE BASE TO THE BOTTOM AS SHOWN ON SLAB, ADD ADDITIONAL CONCRETE TO THE BASE AS SHOWN ON STD. DWG. NO. 840 WHEN REINFORCED CONCRETE PIPE IS USED.
 -THE NUMBER OF REINFORCING STEEL BARS SHALL BE DETERMINED BY THE ENGINEER.
 -CONCRETE SHALL BE CLASS "B" CONCRETE IS TO BE USED FOR CONSTRUCTION.
 -GRATES AND FRAME SHALL BE SEPARATE CONTRACT ITEMS.
 -SEE DETAIL 840D25 FOR ANCHOR BRICK AND 4" SOLID CONCRETE BLOCK WILL BE PERMITTED.
 -DEPTH SHALL BE PROVIDED WITH STEPS ON 1'-2" CENTERS AS DIRECTED BY STD. DWG. NO. 840.66.
 -TIE REINFORCING STEEL AT ALL INTERSECTING AND LAP LOCATIONS OR AS DIRECTED BY THE ENGINEER.

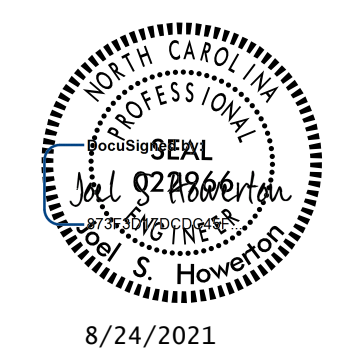


PLAN OF BASE

CONTRACT STANDARDS
 AND DEVELOPMENT UNIT
 Office 919-707-6950 FAX 919-250-4119

SEE PLATE FOR TITLE

ORIGINAL BY: _____ DATE: _____
 MODIFIED BY: _____ DATE: _____
 CHECKED BY: _____ DATE: _____
 FILE SPEC.: _____



8/24/2021

DOCUMENT NOT CONSIDERED FINAL
 UNLESS ALL SIGNATURES COMPLETED