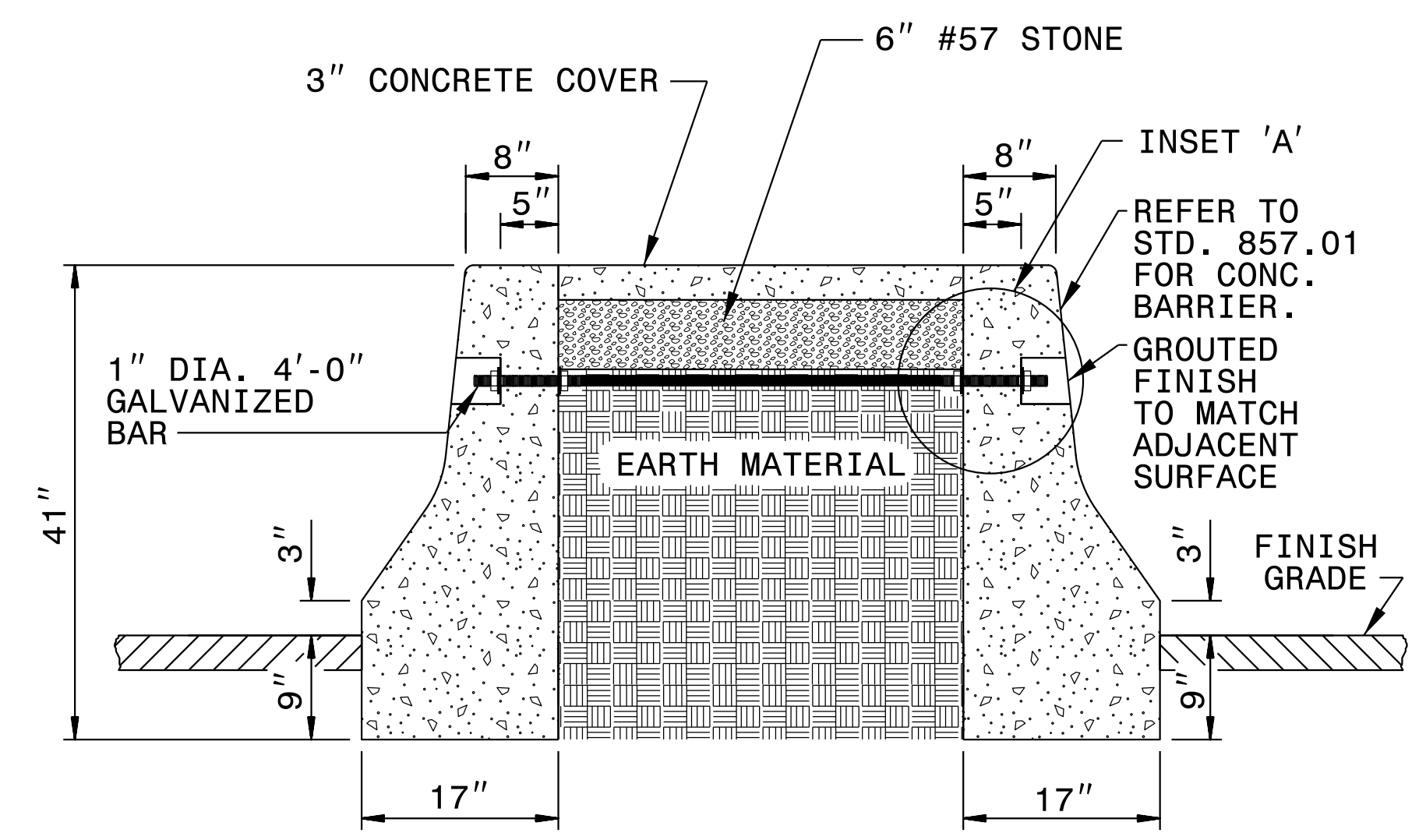
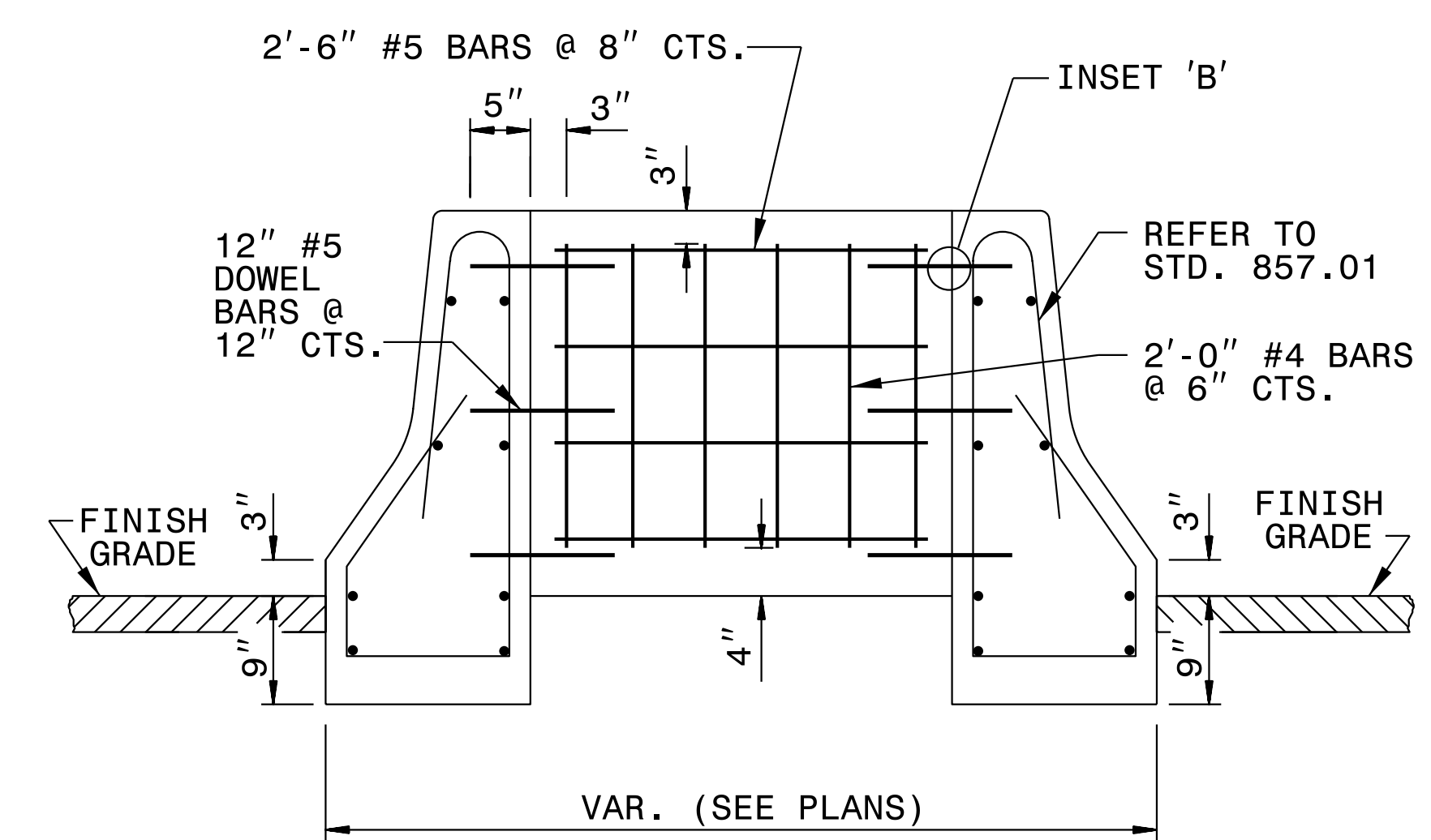


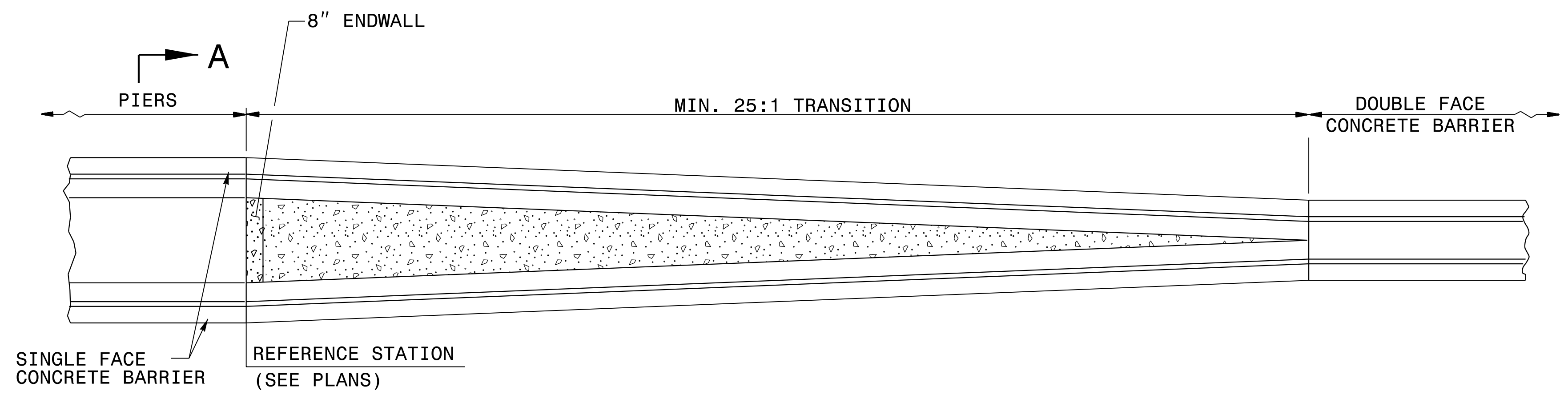
ELEVATION



SECTION 'A-A'



ENDWALL



TRANSITION FROM SINGLE FACE RAIL TO DOUBLE FACE CONCRETE MEDIAN BARRIER

GENERAL NOTES:

USE CLASS 'AA' CONCRETE TO CONSTRUCT CONCRETE BARRIER TRANSITION.

USE CLASS 'B' CONCRETE TO CONSTRUCT CONCRETE COVER.

SEAL ALL EXPANSION JOINTS WITH JOINT FILLER (SEE SECTION 1028 OF THE SPECIFICATIONS).

SUBMIT ALTERNATIVE METHODS FOR STEEL FABRICATION FOR REVIEW.

REFER TO PLANS AND TYPICAL SECTION FOR CONCRETE COVER LOCATIONS.

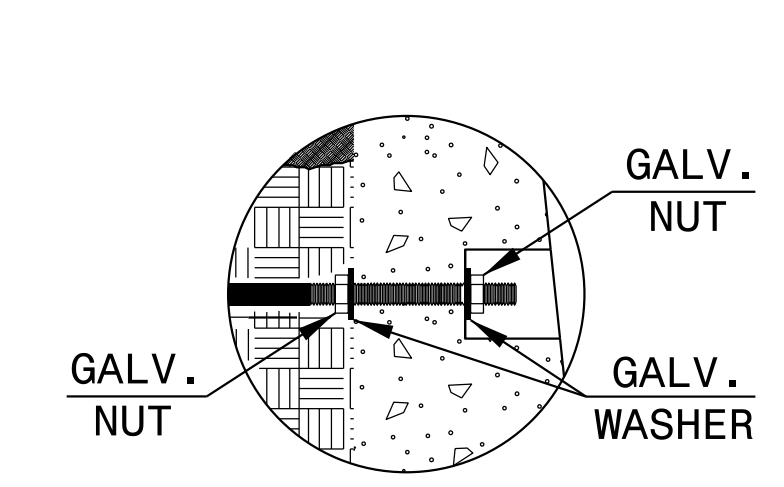
USE AN APPROVED BONDING SYSTEM IN ACCORDANCE WITH SECTION 1081-1, TYPE 3A OF THE STANDARD SPECIFICATIONS.

DRILL ANCHOR HOLES WITH A PNEUMATIC DRILL UNLESS OTHERWISE APPROVED BY THE ENGINEER.

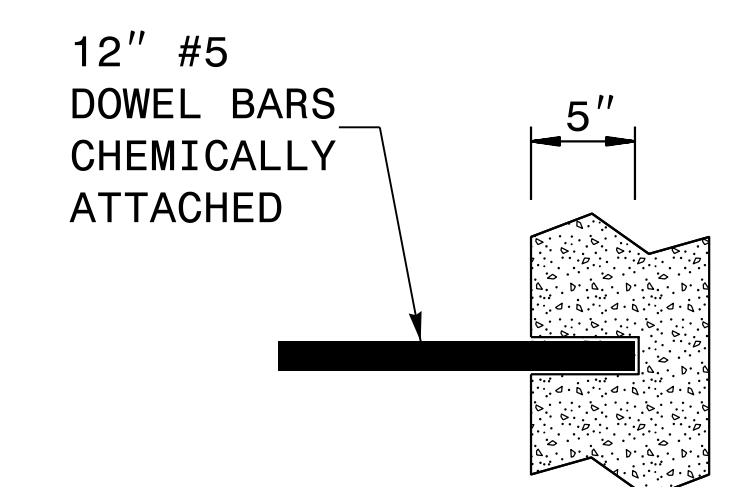
DRILL ANCHOR HOLES IN STRICT ACCORDANCE WITH MANUFACTURER'S RECOMMENDATIONS.

REMOVE ALL DEBRIS, CHIPS, DUST, GREASE, OIL AND OTHER FOREIGN MATTER FROM THE ANCHOR HOLES PRIOR TO THE APPLICATION OF THE ADHEIVE BONDING SYSTEM.

BARRIER TRANSITION LOCATED AS FIELD CONDITIONS DICTATE AND AS DIRECTED BY THE ENGINEER.



INSET 'A'



INSET 'B'



DOCUMENT NOT CONSIDERED FINAL UNLESS ALL SIGNATURES COMPLETED

CONTRACT STANDARDS AND DEVELOPMENT UNIT
Office 919-707-6950 FAX 919-250-4119

MEDIAN HAZARD PROTECTION AND BARRIER TRANSITION

ORIGINAL BY: T.S. Spell DATE: 2-14-00
 MODIFIED BY: DATE:
 CHECKED BY: DATE:
 FILE SPEC.: ericward\usr\details\stand\transbarrier.dgn

09-OCT-2019 09:23 S:\Contracts\Contractors\Special_Details\ericward\usr\details\stand\transbarrier.dgn J:\power\ton AT_CSD-232595