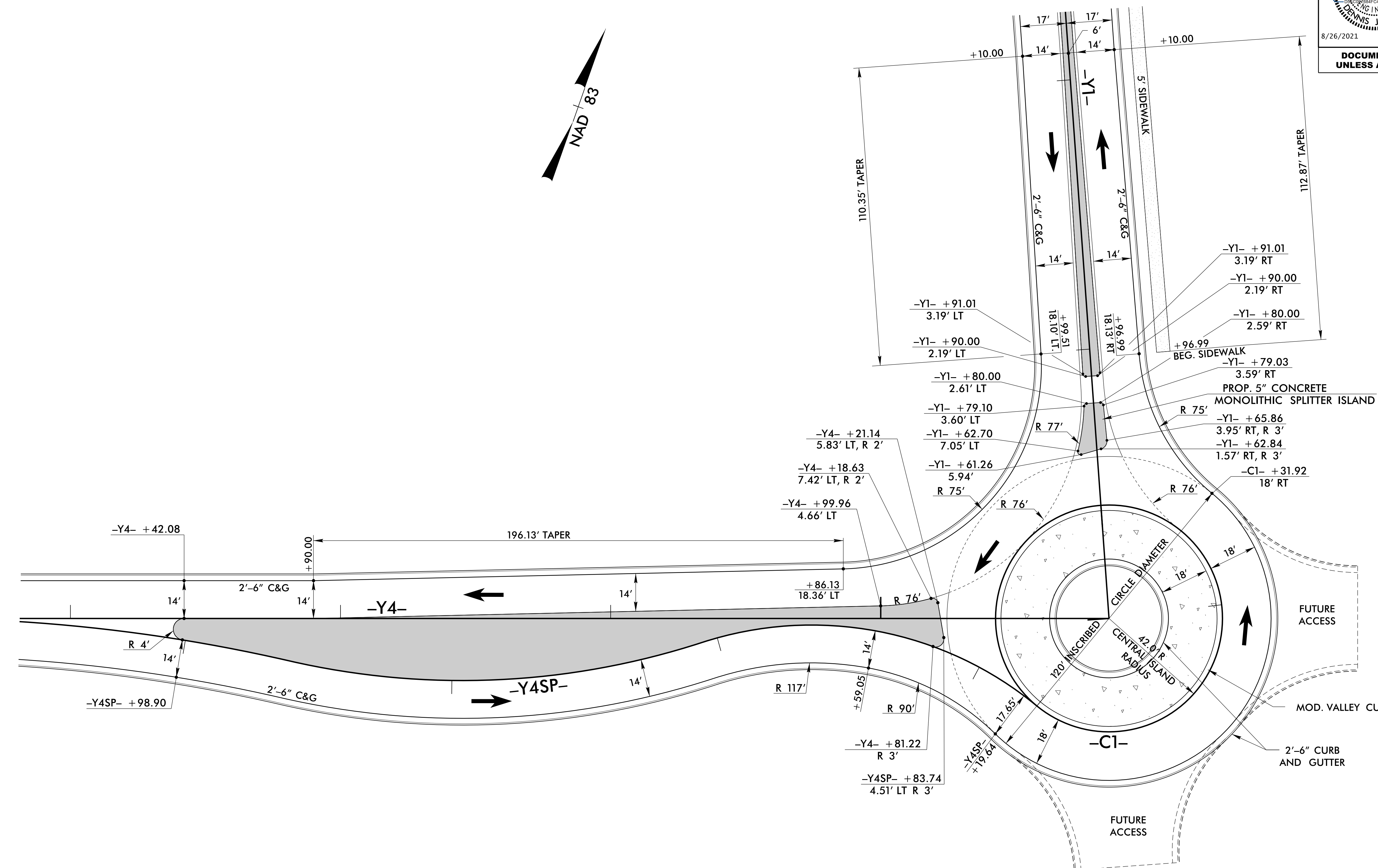
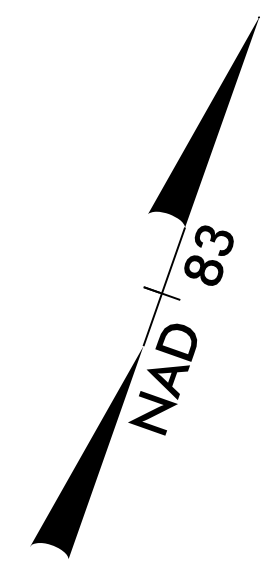


# ROUNDBABOUT -C1- DETAIL

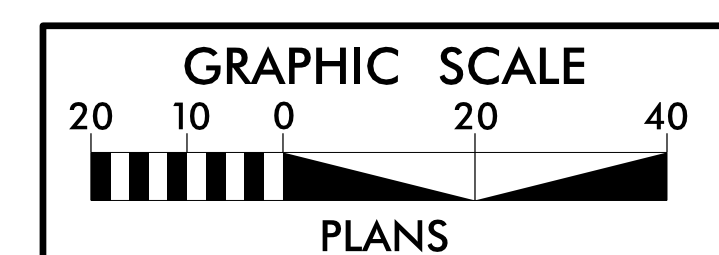


PROJECT REFERENCE NO. R-5737		SHEET NO. 2B-1
RW SHEET NO.		
ROADWAY DESIGN ENGINEER	HYDRAULICS ENGINEER	
8/26/2021		
DOCUMENT NOT CONSIDERED FINAL UNLESS ALL SIGNATURES COMPLETED		



INSCRIBED CIRCLE DIAMETER = 120'  
 TRAVERSABLE APRON WIDTH = 18'  
 CENTRAL ISLAND DIAMETER = 84'  
 CIRCULAR ROADWAY WIDTH = 18'

NOTES:  
 ALL PROPOSED CONCRETE ISLANDS SHALL BE KEYED-IN  
 AND HAVE 1' RADIUS CORNERS UNLESS OTHERWISE  
 NOTED.



LEGEND	
	5' MONOLITHIC CONCRETE ISLAND
	7" CONCRETE TRUCK APRON
	4" CONCRETE SIDEWALK