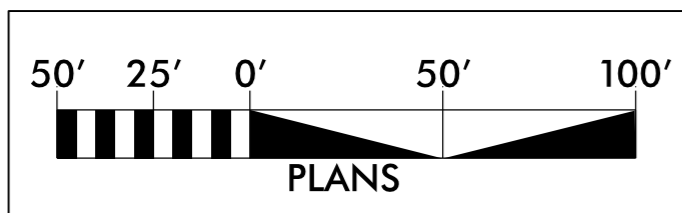


PROJECT REFERENCE NO.	SHEET NO.
R-5014	UC-13
DESIGNED BY: DMD	
DRAWN BY: DMD/MNG	
CHECKED BY: JDB	
APPROVED BY: CMT	
REVISED:	UTILITY CONSTRUCTION PLANS ONLY
NORTH CAROLINA DEPARTMENT OF TRANSPORTATION	
UTILITIES ENGINEERING SEC. PHONE: (919) 707-6690 FAX: (919) 250-4151	

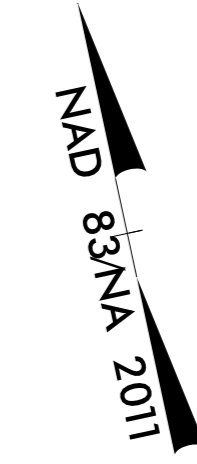
UTILITY CONSTRUCTION

DOCUMENT NOT CONSIDERED FINAL UNLESS ALL SIGNATURES COMPLETED

THIS SHEET CORRESPONDS TO RDY-15



SEE SHEET 21 FOR -WL4- PROFILE



PROP. 1560' OF 12" WATERLINE
C900 PVC
SEE DETAIL F ON SHEET UC-3C (TYP)

PROP. 12"x6" -TEE
-WL4- STA. 16+83.56

MATCH LINE -L- STA. 168+00.00
SEE SHEET UC-12

RECONNECT WATER METER
SEE DETAIL A ON SHEET UC-3B (TYP)

PROP. 12"-11 1/4° BEND
-WL4- STA. 21+30.53

PROP. 12"-11 1/4° BEND
-WL4- STA. 20+70.53

PROP. 12"-11 1/4° BEND
-WL4- STA. 19+90.53

PROP. 12" VALVE
-WL4- STA. 19+45.00

RECONNECT WATER METER

RECONNECT WATER METER

RELOCATE FIRE HYDRANT
PROP. 15 LF OF FIRE HYDRANT LEG
PROP. 6" VALVE

-WL4- STA. 23+55.19
SEE DETAILS C AND D ON SHEET UC-3C (TYP)
SEE DETAIL E ON SHEET UC-3B

RECONNECT WATER METER

PROPOSED FIRE HYDRANT
PROP. 10 LF OF FIRE HYDRANT LEG
PROP. 6" VALVE

-WL4- STA. 16+83.96
SEE DETAIL E ON SHEET UC-3B

ABANDON 1230' OF 8" UTILITY PIPE

EXIST. 8" AC WATER LINE
SEE NOTES 1 & 2
-L- STA. 168+00 TO 180+20

RECONNECT WATER METER

RECONNECT WATER METER

ABANDON 330' OF 12" UTILITY PIPE

-L- STA. 180+20 TO 183+50

PROP. 12"-11 1/4° BEND
-WL4- STA. 27+35.31

PROP. 12"-11 1/4° BEND
-WL4- STA. 27+86.89

PROP. 12"-11 1/4° BEND
-WL4- STA. 28+5+50

PROP. 12" VALVE

-WL4- STA. 28+70.36

PROP. 30' OF 6" WATERLINE

CONNECT TO EXIST. WITH 6" SOLID SLEEVE

PROP. 12" VALVE

-WL4- STA. 29+64.26

PROPOSED 4,120 POUNDS OF DUCTILE IRON WATER PIPE FITTINGS

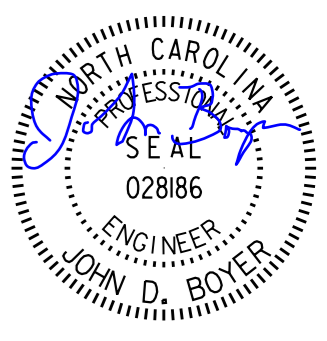
NOTE:

1. THE EXISTING 8" AC WATERLINE, ON THE SOUTH SIDE OF COLINGTON ROAD, IS TO REMAIN IN SERVICE DURING THE CONSTRUCTION OF THE PROPOSED 12" PVC WATERLINE. THE CONTRACTOR IS RESPONSIBLE TO PROTECT THE EXISTING WATERLINE DURING CONSTRUCTION.
2. AFTER COMPLETION OF THE PROPOSED 12" PVC WATERLINE, THE EXISTING 8" AC WATERLINE IS TO BE ABANDONED IN PLACE AND FILLED WITH GROUT FROM -L- STA. 41+83 TO -L- STA. 211+55, PER THE SPECIAL PROVISIONS SECTION OF THE SPECIFICATIONS.
3. ALL PROPOSED WATERLINE SHALL BE 12" C900 PVC.
4. ALL PIPE FITTINGS SHALL BE DUCTILE IRON.
5. REFER TO THE RESTRAINED JOINT DETAIL ON SHEET UC-3G FOR RESTRAINED JOINT LENGTHS.
6. ELEVATION OF EXISTING WATERLINES ARE ASSUMED TO BE 3- FEET BELOW EXISTING GRADE. CONTRACTOR SHALL VERIFY THE LOCATION AND DEPTH OF THE EXISTING WATERLINE PRIOR TO MAKING THE CONNECTION.
7. CONNECTIONS TO EXISTING WATERLINE ARE TO BE RESTRAINED BY THRUST COLLARS. SEE DETAIL A ON SHEET UC-3E.

8/17/99
SYSTEM: R5014_U1_UC13_psh.dgn
USER: GYANTM

REVISIONS

MATCH LINE -L- STA. 183+50.00
SEE SHEET UC-14

PROJECT REFERENCE NO.	SHEET NO.
R-5014	UC-14
DESIGNED BY: DMD	
DRAWN BY: DMD/MNG	
CHECKED BY: JDB	
APPROVED BY: CMT	
REVISED:	
NORTH CAROLINA DEPARTMENT OF TRANSPORTATION	
UTILITIES ENGINEERING SEC. PHONE: (919) 707-6690 FAX: (919) 250-4151	
UTILITY CONSTRUCTION PLANS ONLY	

UTILITY CONSTRUCTION

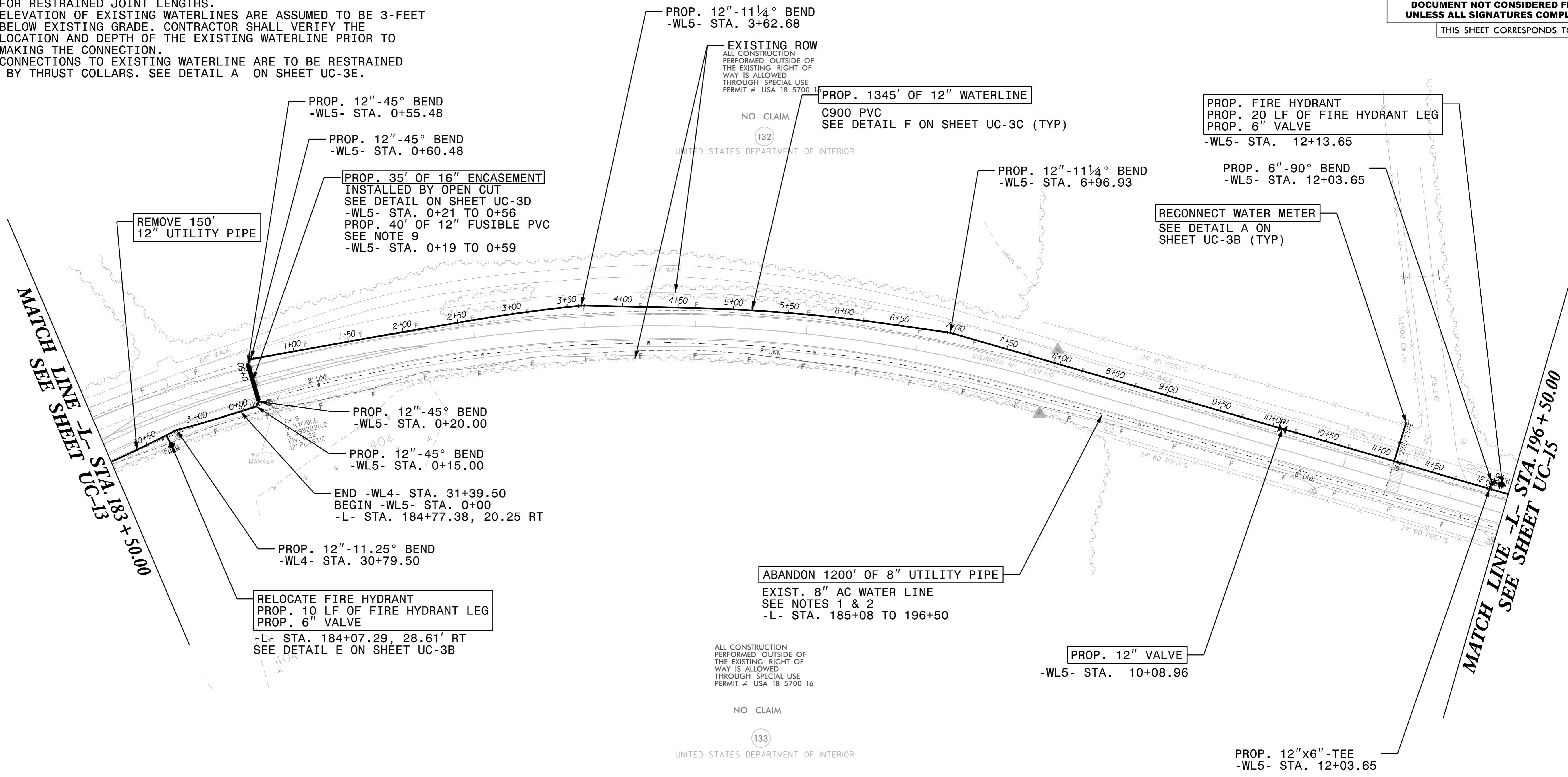
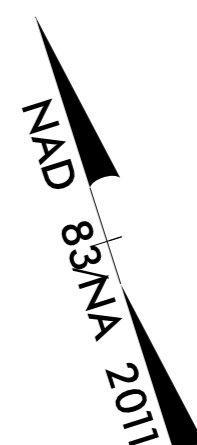
**DOCUMENT NOT CONSIDERED FINAL
UNLESS ALL SIGNATURES COMPLETED**

THIS SHEET CORRESPONDS TO RDY-16

NOTE:

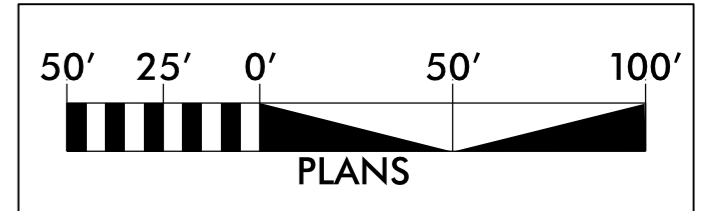
- THE EXISTING 8" AC WATERLINE, ON THE SOUTH SIDE OF COLINGTON ROAD, IS TO REMAIN IN SERVICE DURING THE CONSTRUCTION OF THE PROPOSED 12" PVC WATERLINE. THE CONTRACTOR IS RESPONSIBLE TO PROTECT THE EXISTING WATERLINE DURING CONSTRUCTION.
- AFTER COMPLETION OF THE PROPOSED 12" PVC WATERLINE, THE EXISTING 8" AC WATERLINE IS TO BE ABANDONED IN PLACE AND FILLED WITH GROUT FROM -L- STA. 41+83 TO -L- STA. 211+55, PER THE SPECIAL PROVISIONS SECTION OF THE SPECIFICATIONS.
- ALL PROPOSED WATERLINE SHALL BE 12" C900 PVC.
- ALL PIPE FITTINGS SHALL BE DUCTILE IRON.
- REFER TO THE RESTRAINED JOINT DETAIL ON SHEET UC-3G FOR RESTRAINED JOINT LENGTHS.
- ELEVATION OF EXISTING WATERLINES ARE ASSUMED TO BE 3-FEET BELOW EXISTING GRADE. CONTRACTOR SHALL VERIFY THE LOCATION AND DEPTH OF THE EXISTING WATERLINE PRIOR TO MAKING THE CONNECTION.
- CONNECTIONS TO EXISTING WATERLINE ARE TO BE RESTRAINED BY THRUST COLLARS. SEE DETAIL A ON SHEET UC-3E.

- CONTRACTOR TO NOTIFY NCDOT AT LEAST 24 HOURS BEFORE EACH DAY WORK IS INTENDED NEAR THE AIRPORT RUNWAY (-L- STA. 191+50 TO 196+50). NCDOT WILL TAKE NECESSARY ACTIONS TO GET A NOTICE TO AIRMEN (NOTAM) ISSUED. CONTRACTOR WILL CONFIRM WITH NCDOT THAT A NOTAM HAS BEEN ISSUED BEFORE COMMENCING WORK NEAR THE AIRPORT RUNWAY.
- WITH APPROVAL FROM THE NCDOT ENGINEER, IN AREAS WHERE THE RIGHT-OF-WAY IS BOUNDED BY WETLANDS OR CONSERVATION AREA, SUSPEND THE FUSIBLE PVC PIPE STRING WITH A BACKHOE OR CRANE OVER THE SENSITIVE AREA FOR PULL-IN. FOR AREAS OF PRIVATE PROPERTY, THE CONTRACTOR SHALL UTILIZE THE CARTRIDGE METHOD, MULTIPLE SHORT PIPES WITH FUSION IN THE PIT.



REVISIONS

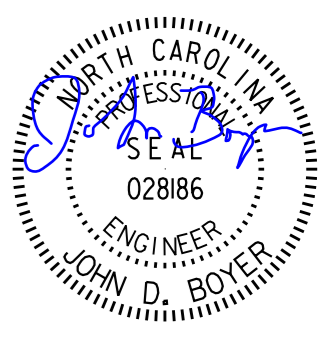
8/17/99
SYSTEM: R5014_UJ_UC14_psh.dgn
USER: GYANTMN



PROPOSED 1,930 POUNDS OF DUCTILE IRON WATER PIPE FITTINGS

SEE SHEET 21 FOR -WL4- PROFILE

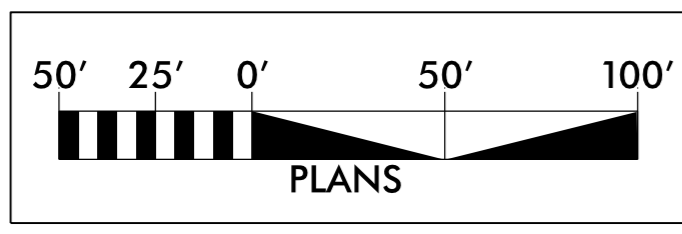
SEE SHEETS 21 AND 22 FOR -WL5- PROFILE

PROJECT REFERENCE NO. R-5014	SHEET NO. UC-15
DESIGNED BY: DMD	
DRAWN BY: DMD/MNG	
CHECKED BY: JDB	
APPROVED BY: CMT	
REVISED:	
NORTH CAROLINA DEPARTMENT OF TRANSPORTATION	
UTILITIES ENGINEERING SEC. PHONE: (919) 707-6690 FAX: (919) 250-4151	
UTILITY CONSTRUCTION PLANS ONLY	

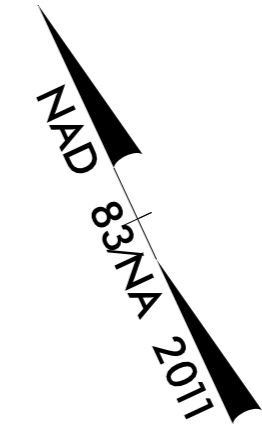
UTILITY CONSTRUCTION

**DOCUMENT NOT CONSIDERED FINAL
UNLESS ALL SIGNATURES COMPLETED**

THIS SHEET CORRESPONDS TO RDY-17



SEE SHEET 22 FOR -WL5- PROFILE



ALL CONSTRUCTION PERFORMED OUTSIDE OF THE EXISTING RIGHT OF WAY IS ALLOWED THROUGH SPECIAL USE PERMIT # USA 18 5700 16

NO CLAIM

132
UNITED STATES DEPARTMENT OF INTERIOR

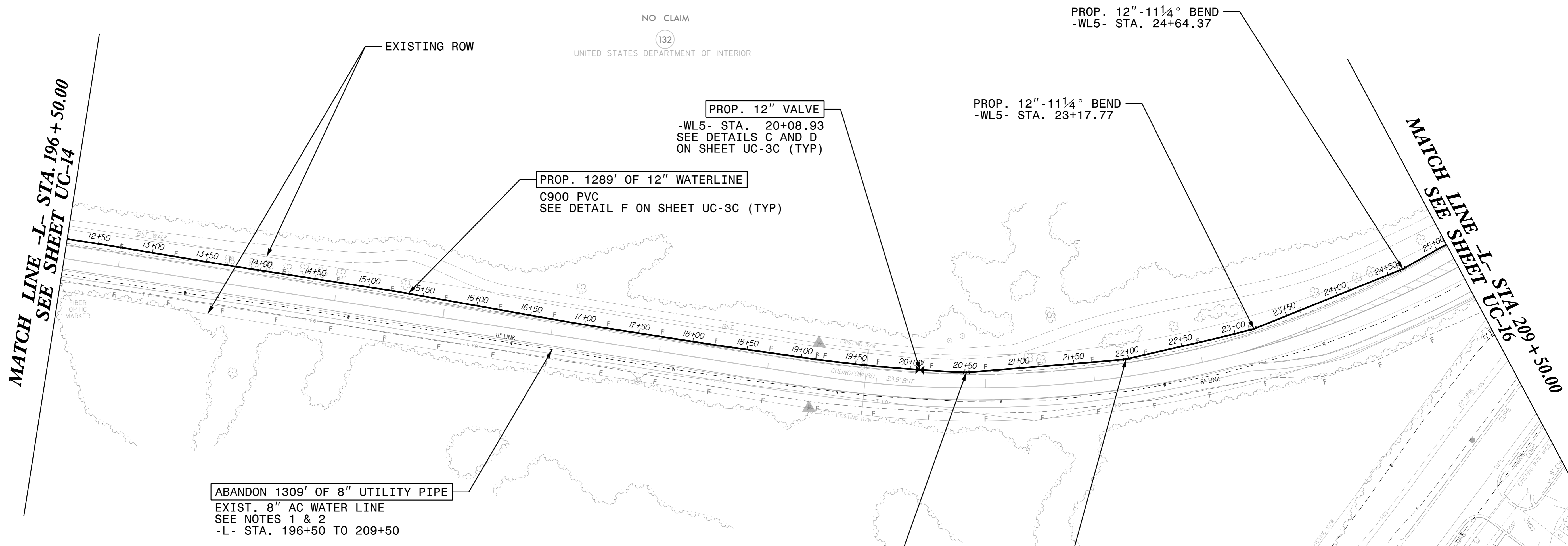
NO CLAIM

133
UNITED STATES DEPARTMENT OF INTERIOR

ALL CONSTRUCTION PERFORMED OUTSIDE OF THE EXISTING RIGHT OF WAY IS ALLOWED THROUGH SPECIAL USE PERMIT # USA 18 5700 16

MATCH LINE -L- STA. 196+50.00
SEE SHEET UC-14

MATCH LINE -L- STA. 209+50.00
SEE SHEET UC-16



ABANDON 1309' OF 8" UTILITY PIPE
EXIST. 8" AC WATER LINE
SEE NOTES 1 & 2
-L- STA. 196+50 TO 209+50

PROPOSED 880 POUNDS OF
DUCTILE IRON WATER PIPE FITTINGS

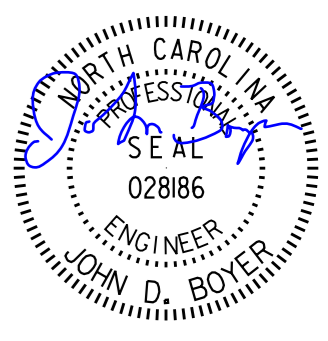
NOTE:

1. THE EXISTING 8" AC WATERLINE, ON THE SOUTH SIDE OF COLINGTON ROAD, IS TO REMAIN IN SERVICE DURING THE CONSTRUCTION OF THE PROPOSED 12" PVC WATERLINE. THE CONTRACTOR IS RESPONSIBLE TO PROTECT THE EXISTING WATERLINE DURING CONSTRUCTION.
2. AFTER COMPLETION OF THE PROPOSED 12" PVC WATERLINE, THE EXISTING 8" AC WATERLINE IS TO BE ABANDONED IN PLACE AND FILLED WITH GROUT FROM -L- STA. 41+83 TO -L- STA. 211+55, PER THE SPECIAL PROVISIONS SECTION OF THE SPECIFICATIONS.
3. ALL PROPOSED WATERLINE SHALL BE 12" C900 PVC.
4. ALL PIPE FITTINGS SHALL BE DUCTILE IRON.
5. REFER TO THE RESTRAINED JOINT DETAIL ON SHEET UC-3G FOR RESTRAINED JOINT LENGTHS.
6. ELEVATION OF EXISTING WATERLINES ARE ASSUMED TO BE 3- FEET BELOW EXISTING GRADE. CONTRACTOR SHALL VERIFY THE LOCATION AND DEPTH OF THE EXISTING WATERLINE PRIOR TO MAKING THE CONNECTION.
7. CONNECTIONS TO EXISTING WATERLINE ARE TO BE RESTRAINED BY THRUST COLLARS. SEE DETAIL A ON SHEET UC-3E.

REVISIONS

8/17/99

8/17/99

PROJECT REFERENCE NO.	SHEET NO.
R-5014	UC-16
DESIGNED BY: DMD	
DRAWN BY: DMD/MNG	
CHECKED BY: JDB	
APPROVED BY: CMT	
REVISED:	UTILITY CONSTRUCTION PLANS ONLY
NORTH CAROLINA DEPARTMENT OF TRANSPORTATION UTILITIES ENGINEERING SEC. PHONE: (919) 707-6690 FAX: (919) 250-4151	

UTILITY CONSTRUCTION

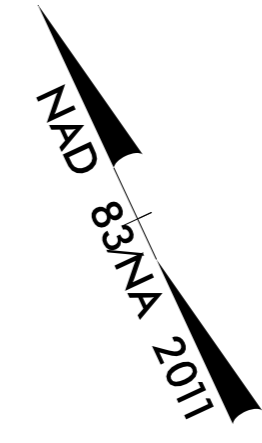
**DOCUMENT NOT CONSIDERED FINAL
UNLESS ALL SIGNATURES COMPLETED**

THIS SHEET CORRESPONDS TO RDY-18

NOTE:

1. THE EXISTING 8" AC WATERLINE, ON THE SOUTH SIDE OF COLINGTON ROAD, IS TO REMAIN IN SERVICE DURING THE CONSTRUCTION OF THE PROPOSED 12" PVC WATERLINE. THE CONTRACTOR IS RESPONSIBLE TO PROTECT THE EXISTING WATERLINE DURING CONSTRUCTION.
2. AFTER COMPLETION OF THE PROPOSED 12" PVC WATERLINE, THE EXISTING 8" AC WATERLINE IS TO BE ABANDONED IN PLACE AND FILLED WITH GROUT FROM -L- STA. 41+83 TO -L- STA. 211+55, PER THE SPECIAL PROVISIONS SECTION OF THE SPECIFICATIONS.
3. ALL PROPOSED WATERLINE SHALL BE 12" C900 PVC.
4. ALL PIPE FITTINGS SHALL BE DUCTILE IRON.
5. REFER TO THE RESTRAINED JOINT DETAIL ON SHEET UC-3G FOR RESTRAINED JOINT LENGTHS.
6. ELEVATION OF EXISTING WATERLINES ARE ASSUMED TO BE 3- FEET BELOW EXISTING GRADE. CONTRACTOR SHALL VERIFY THE LOCATION AND DEPTH OF THE EXISTING WATERLINE PRIOR TO MAKING THE CONNECTION.
7. CONNECTIONS TO EXISTING WATERLINE ARE TO BE RESTRAINED BY THRUST COLLARS. SEE DETAIL A ON SHEET UC-3E.

8. LOWER FORCE MAIN SEWER BELOW PROPOSED WATER LINE. USE FOUR 11.25° VERTICAL BENDS IN FORCE MAIN TO PROVIDE 18" VERTICAL CLEARANCE. FITTINGS SHALL BE RESTRAINED PER DETAIL B ON SHEET UC-3E. WORK ON THE SANITARY FORCE MAIN SHALL BE COORDINATED WITH THE UTILITY OWNER, KILL DEVIL HILLS WASTE WATER TREATMENT PLANT (KDHWWTP, LLC).
9. WITH APPROVAL FROM THE NCDOT ENGINEER, IN AREAS WHERE THE RIGHT-OF-WAY IS BOUNDED BY WETLANDS OR CONSERVATION AREA, SUSPEND THE FUSIBLE PVC PIPE STRING WITH A BACKHOE OR CRANE OVER THE SENSITIVE AREA FOR PULL-IN. FOR AREAS OF PRIVATE PROPERTY, THE CONTRACTOR SHALL UTILIZE THE CARTRIDGE METHOD, MULTIPLE SHORT PIPES WITH FUSION IN THE PIT.

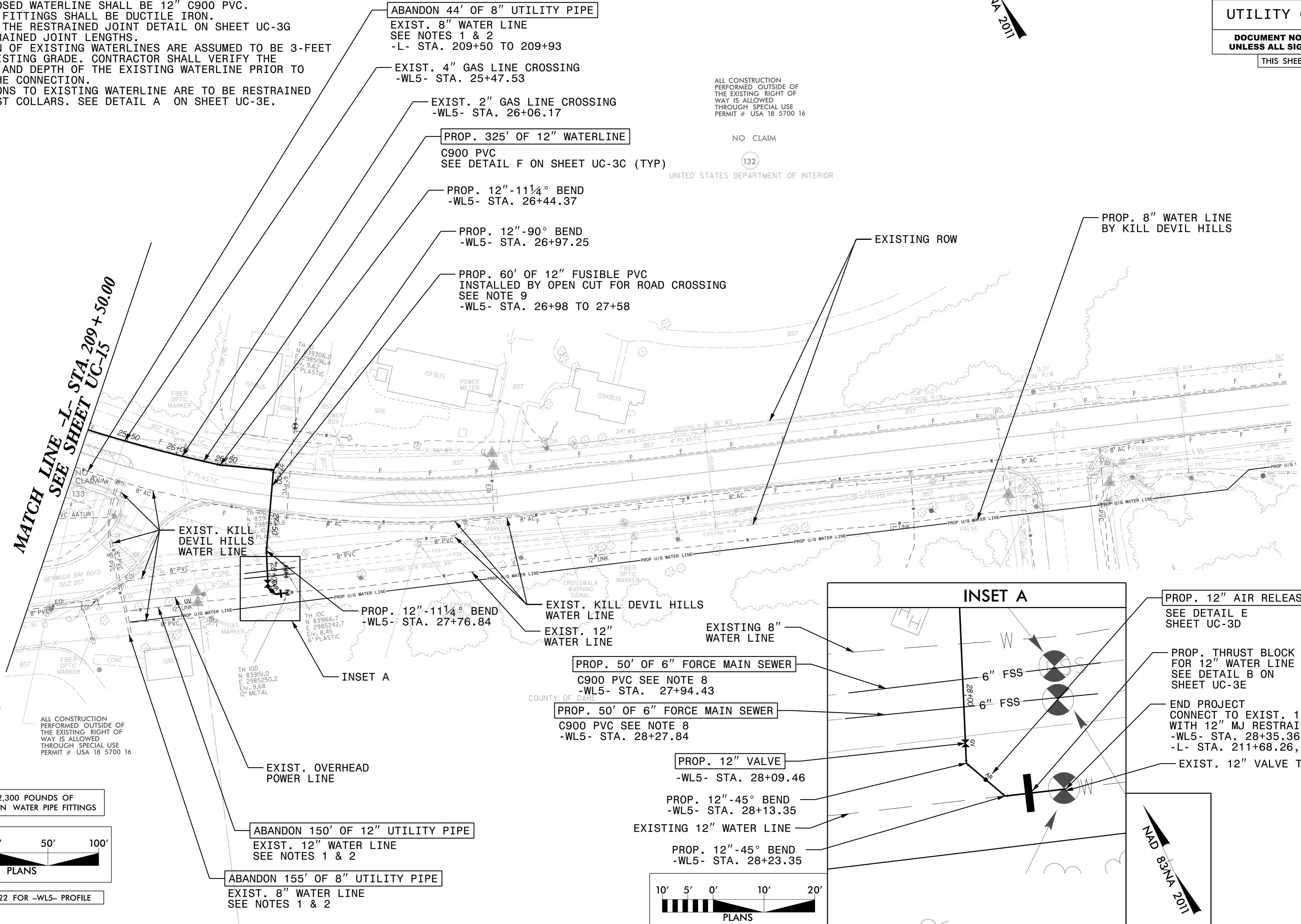


ALL CONSTRUCTION PERFORMED OUTSIDE OF THE EXISTING RIGHT OF WAY IS ALLOWED THROUGH SPECIAL USE PERMIT # USA 18 5700 16

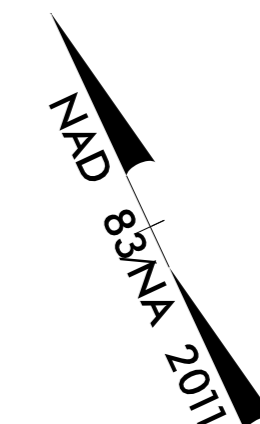
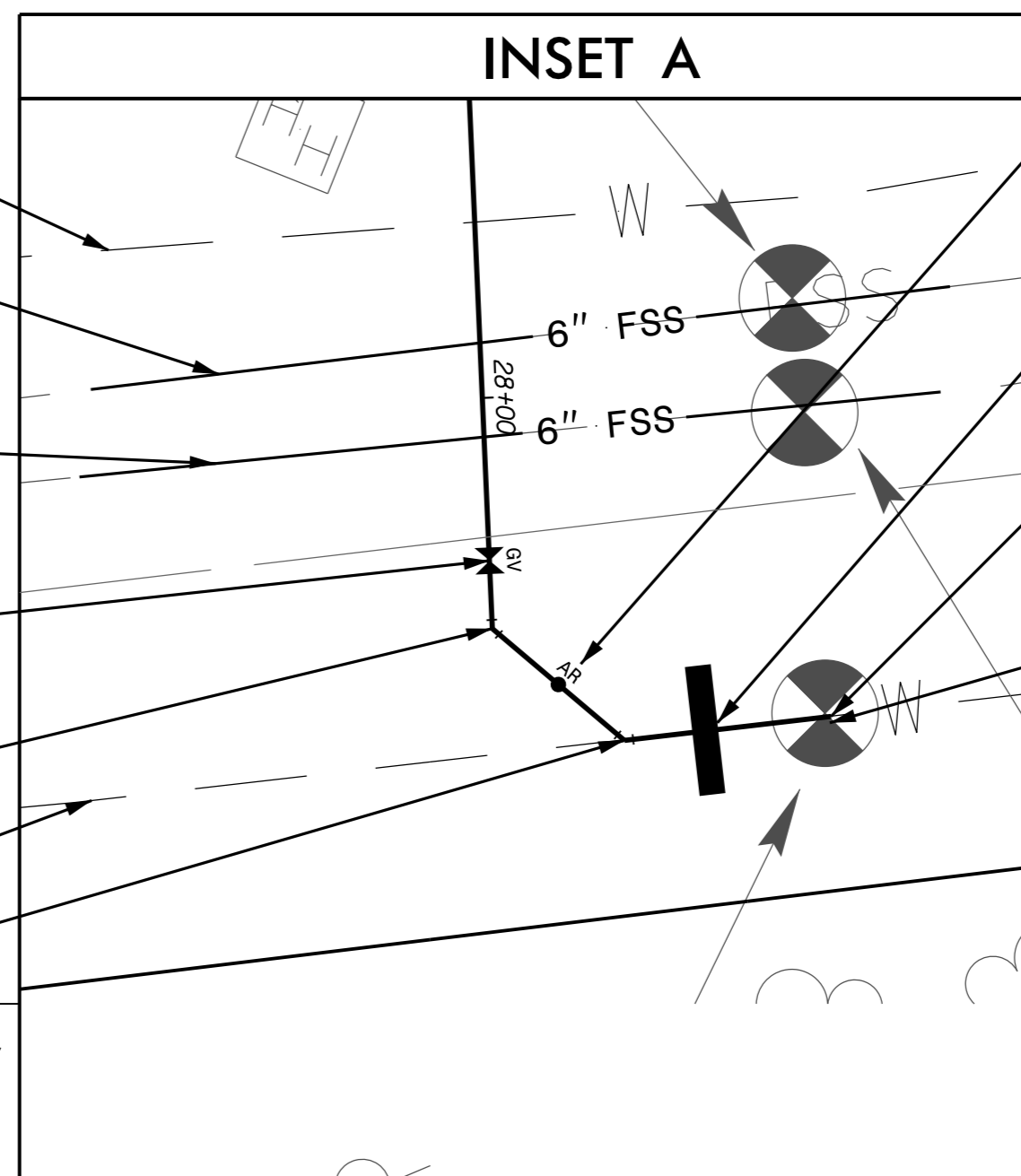
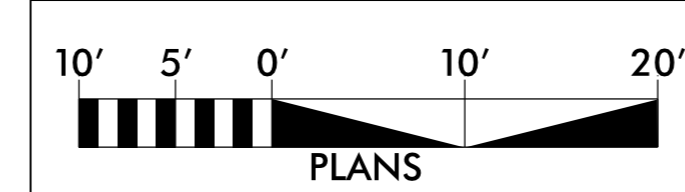
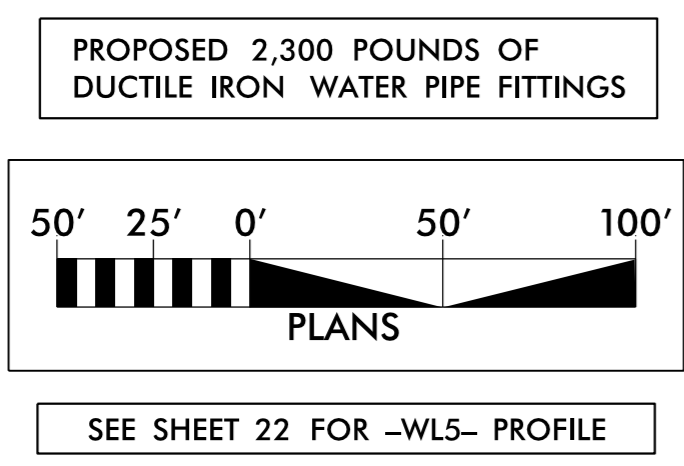
NO CLAIM

132

UNITED STATES DEPARTMENT OF INTERIOR



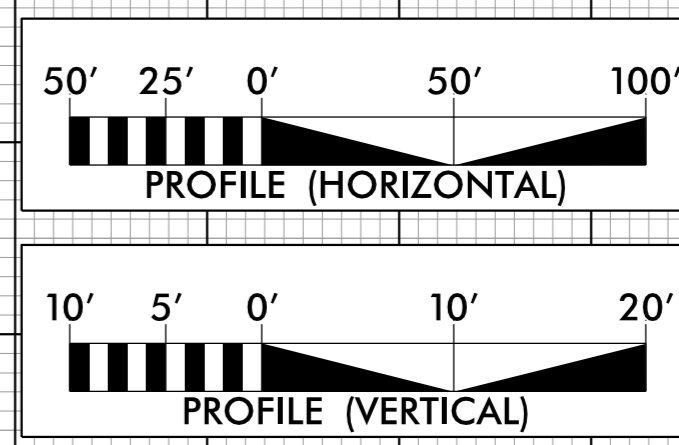
**MATCH LINE -L- STA. 209+50.00
SEE SHEET UC-15**



REVISIONS

5/28/99

-WL1-



PROJECT REFERENCE NO. R-5014	SHEET NO. UC-17
DESIGNED BY: DMD	
DRAWN BY: DMD/MNG	
CHECKED BY: JDB	
APPROVED BY: CMT	
REVISED:	
NORTH CAROLINA DEPARTMENT OF TRANSPORTATION UTILITIES ENGINEERING SEC. PHONE: (919) 707-6690 FAX: (919) 250-4151	
UTILITY CONSTRUCTION PLANS ONLY	

UTILITY CONSTRUCTION

DOCUMENT NOT CONSIDERED FINAL UNLESS ALL SIGNATURES COMPLETED

30

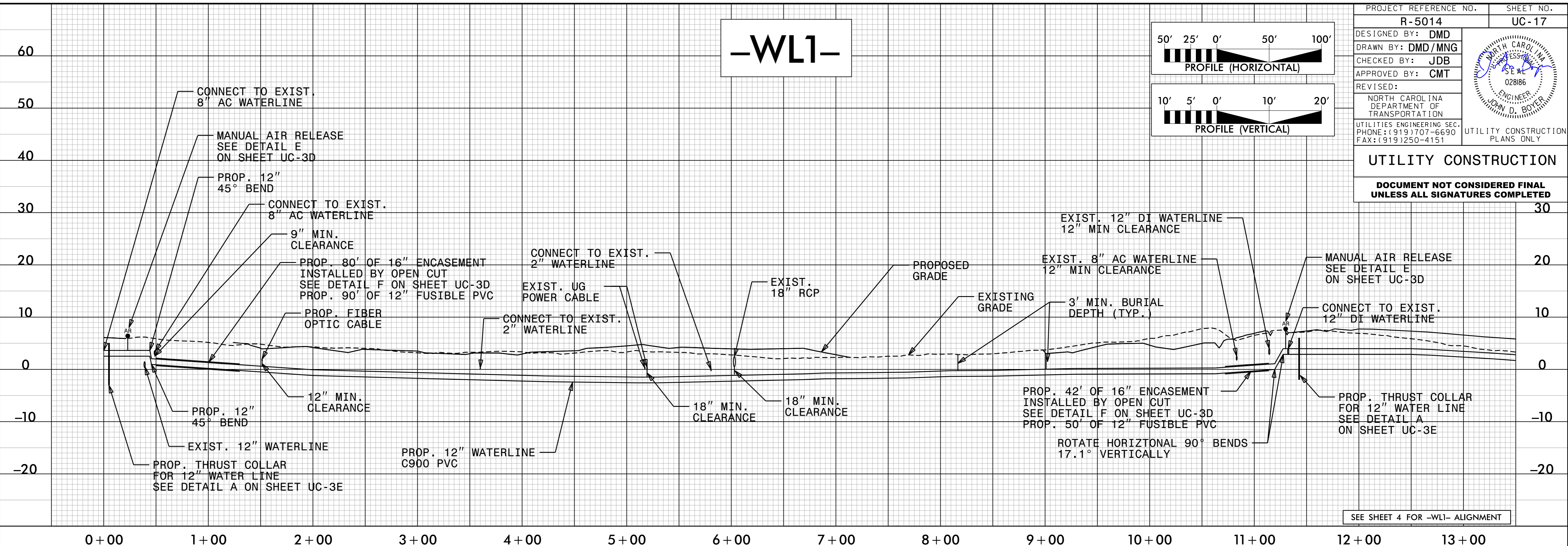
20

10

0

-10

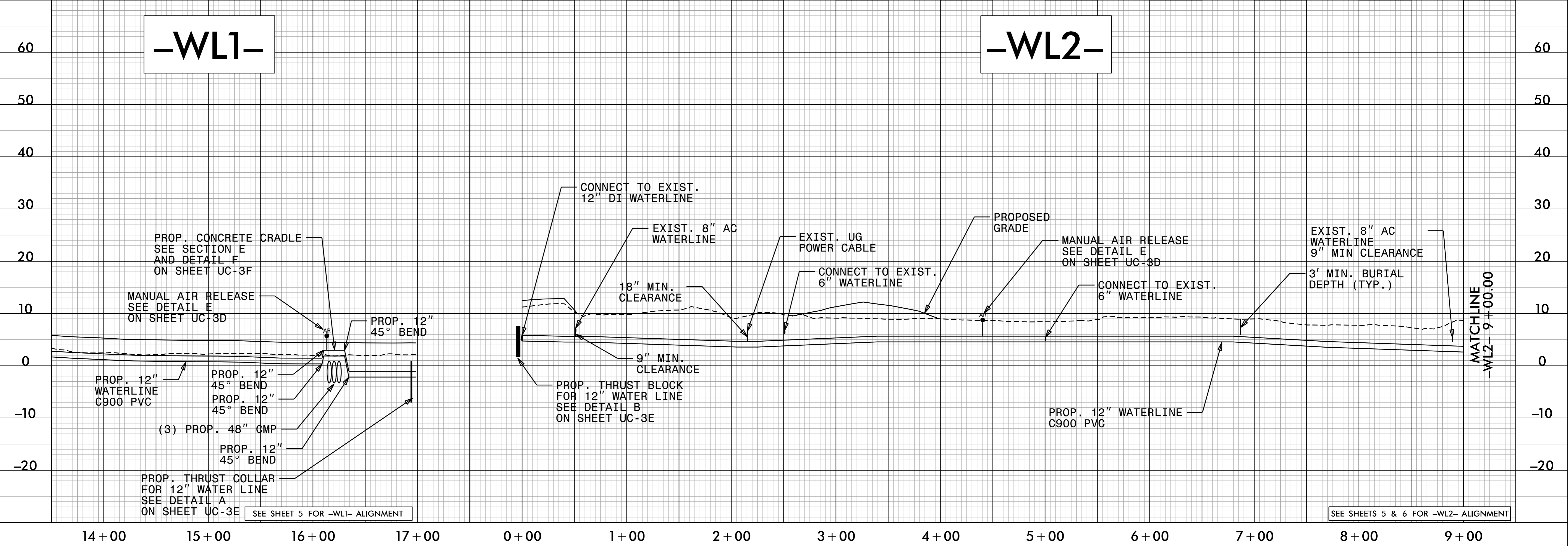
-20



SEE SHEET 4 FOR -WL1- ALIGNMENT

-WL1-

-WL2-

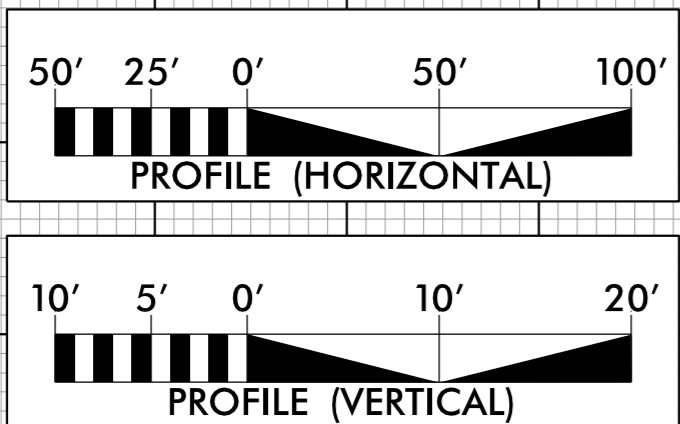


SEE SHEETS 5 & 6 FOR -WL2- ALIGNMENT

MATCHLINE -WL2- 9+00.00

SYSTEM: R5014_U_UC17_psh.dgn
USER: GYANTWK

5/28/99



-WL2-

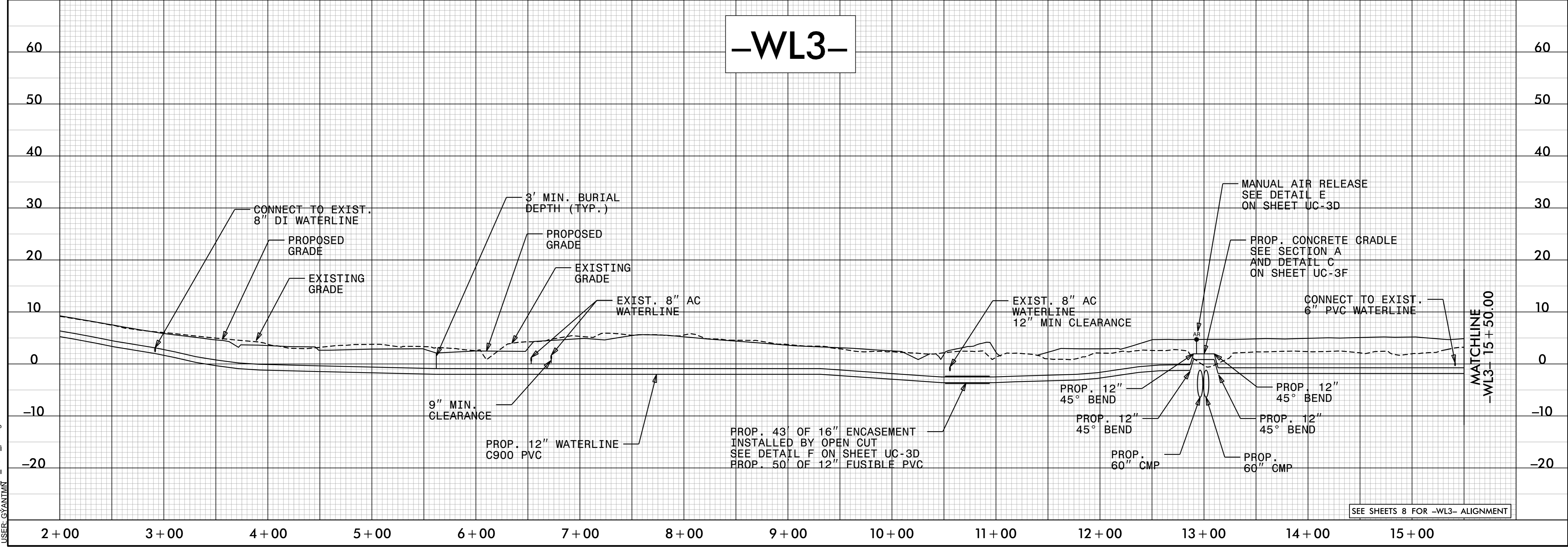
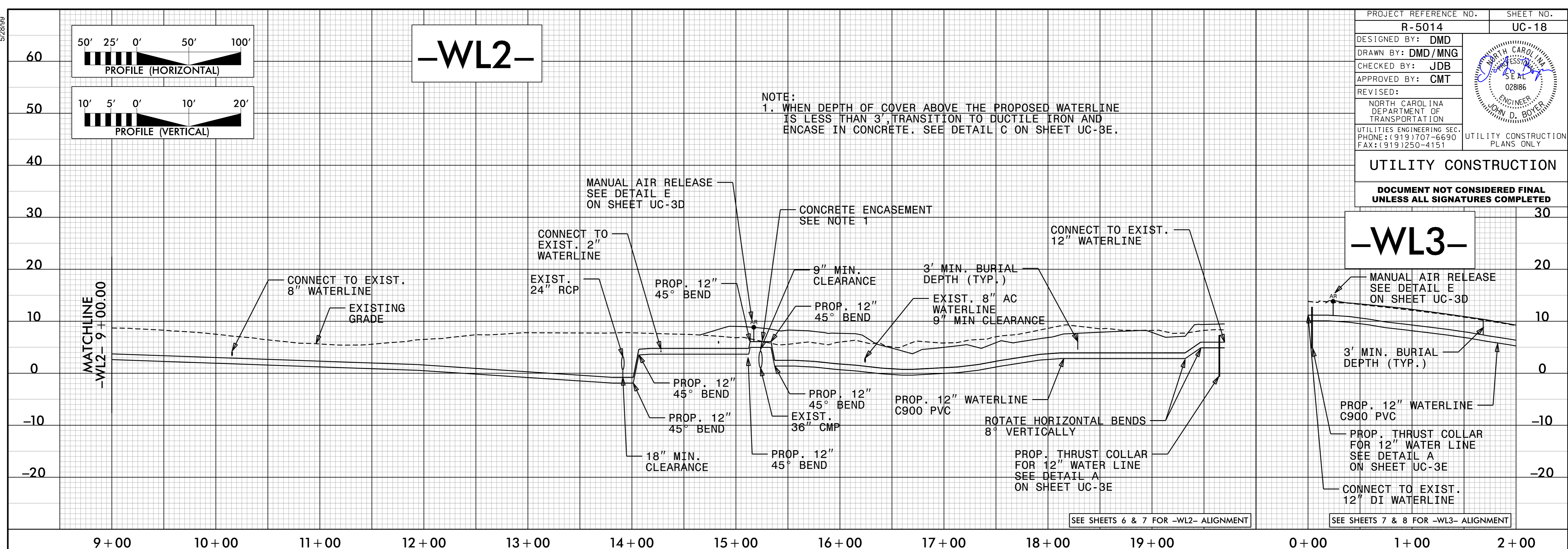
PROJECT REFERENCE NO.	SHEET NO.
R-5014	UC-18
DESIGNED BY: DMD	
DRAWN BY: DMD/MNG	
CHECKED BY: JDB	
APPROVED BY: CMT	
REVISED:	
NORTH CAROLINA DEPARTMENT OF TRANSPORTATION UTILITIES ENGINEERING SEC. PHONE: (919) 707-6690 FAX: (919) 250-4151	
UTILITY CONSTRUCTION PLANS ONLY	

UTILITY CONSTRUCTION

**DOCUMENT NOT CONSIDERED FINAL
UNLESS ALL SIGNATURES COMPLETED**

-WL3-

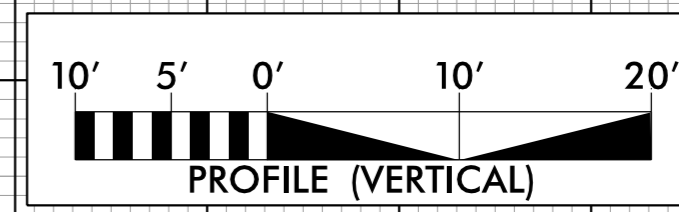
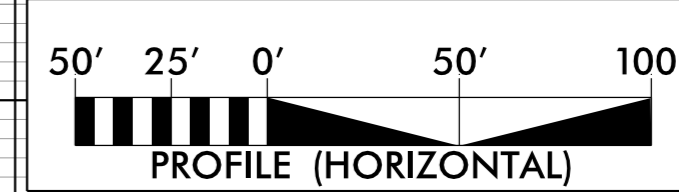
NOTE:
1. WHEN DEPTH OF COVER ABOVE THE PROPOSED WATERLINE IS LESS THAN 3', TRANSITION TO DUCTILE IRON AND ENCASE IN CONCRETE. SEE DETAIL C ON SHEET UC-3E.



SYSTEM: R09014_U_UC18_pst.dgn
USER: CANTANK

5/28/99

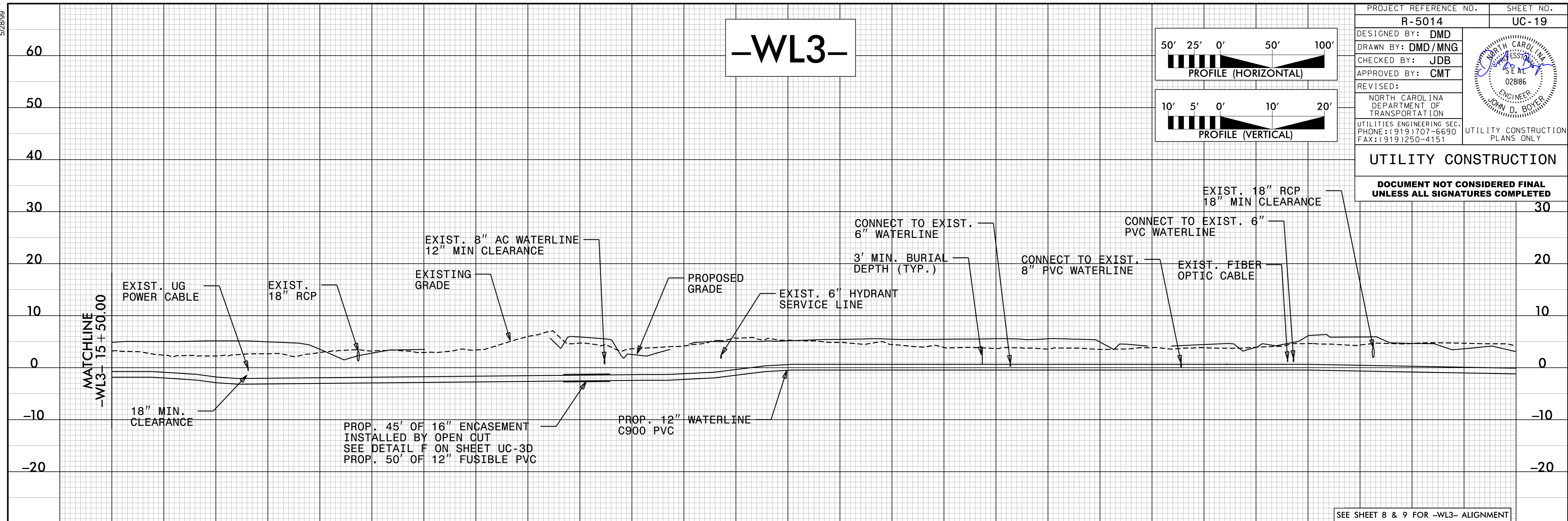
-WL3-



PROJECT REFERENCE NO. R-5014	SHEET NO. UC-19
DESIGNED BY: DMD	
DRAWN BY: DMD/MNG	
CHECKED BY: JDB	
APPROVED BY: CMT	
REVISED:	
NORTH CAROLINA DEPARTMENT OF TRANSPORTATION UTILITIES ENGINEERING SEC. PHONE: (919) 707-6690 FAX: (919) 250-4151	
UTILITY CONSTRUCTION PLANS ONLY	

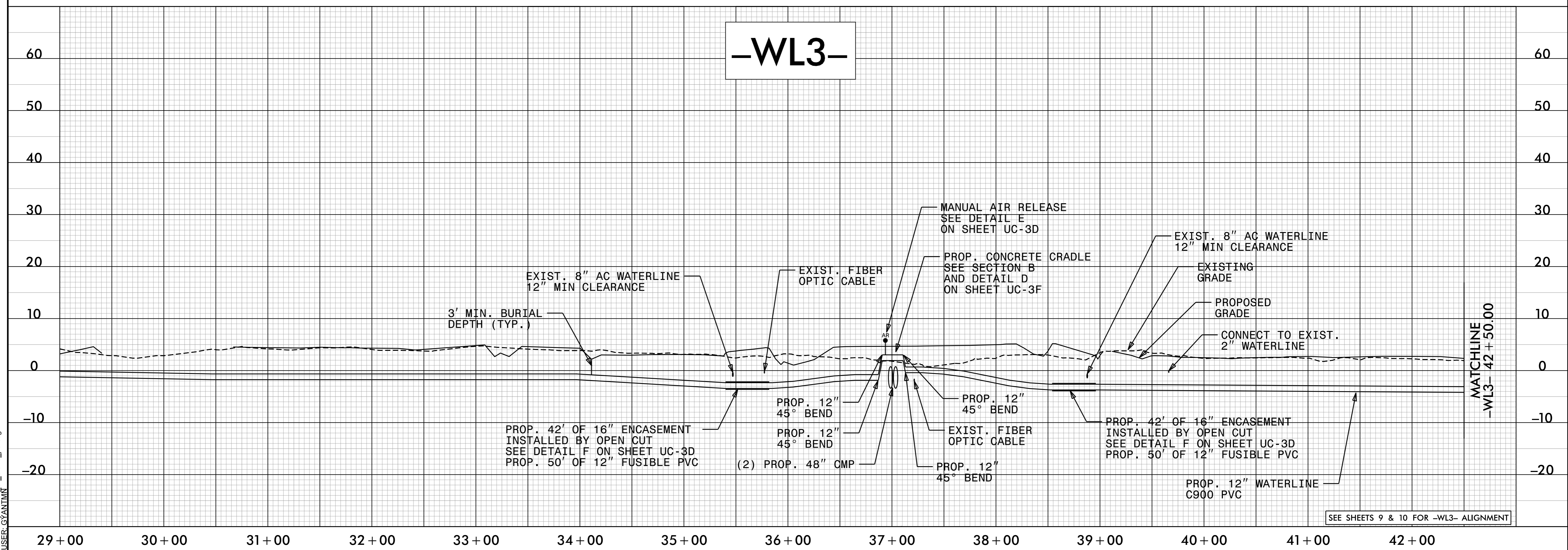
UTILITY CONSTRUCTION

DOCUMENT NOT CONSIDERED FINAL UNLESS ALL SIGNATURES COMPLETED



SEE SHEET 8 & 9 FOR -WL3- ALIGNMENT

-WL3-



SEE SHEETS 9 & 10 FOR -WL3- ALIGNMENT

SYSTEM: R5014_U_UC19_psh.dgn
USER: GYANT/MK