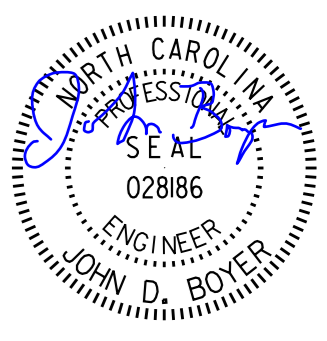
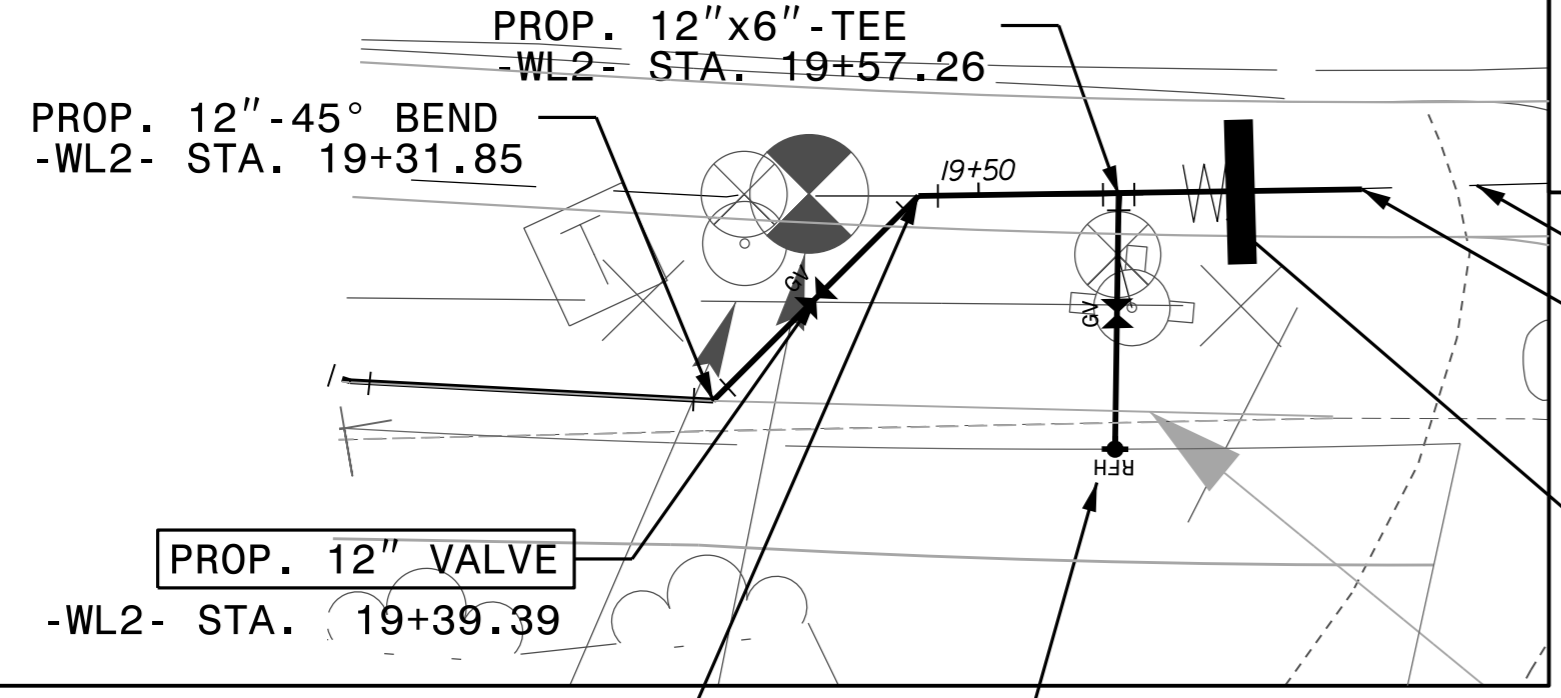
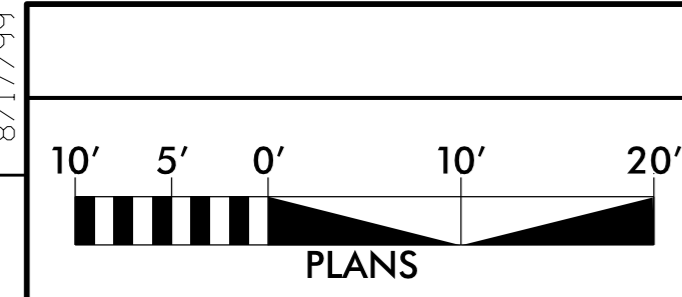
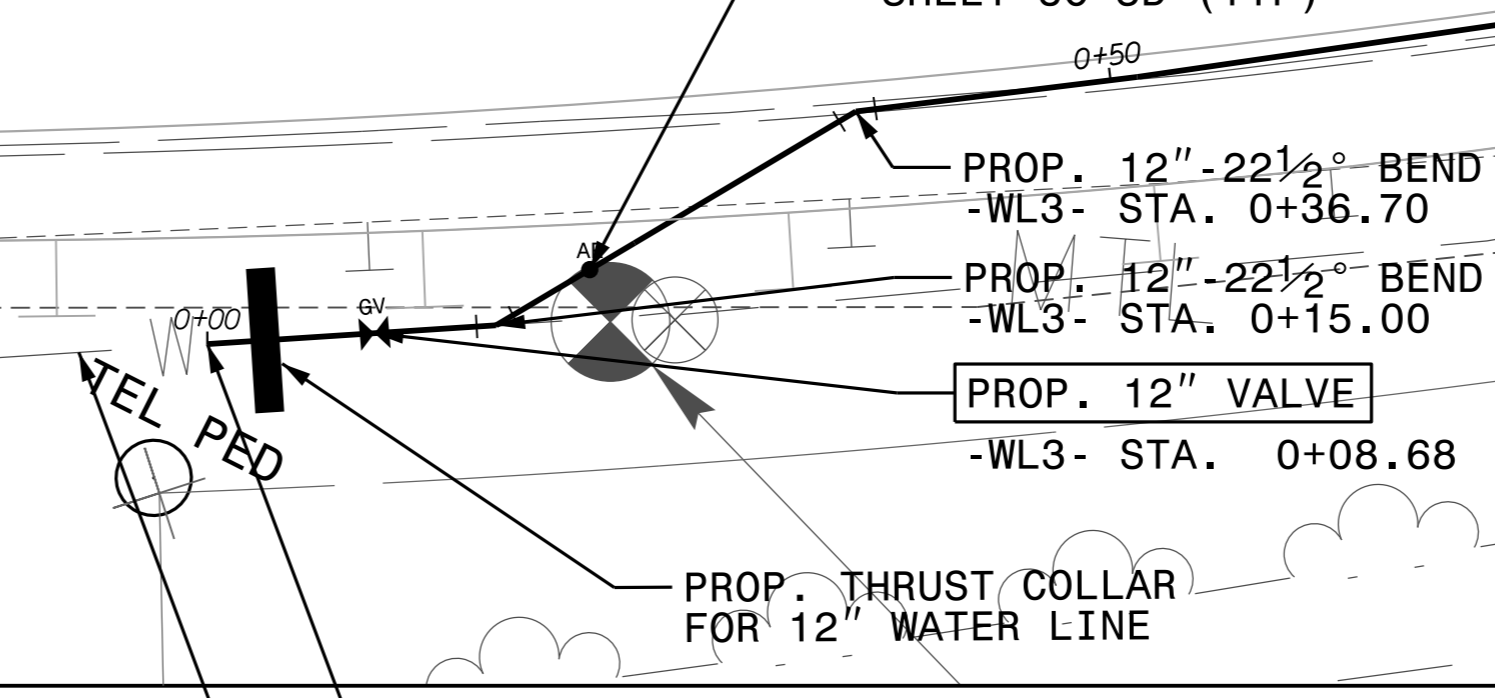
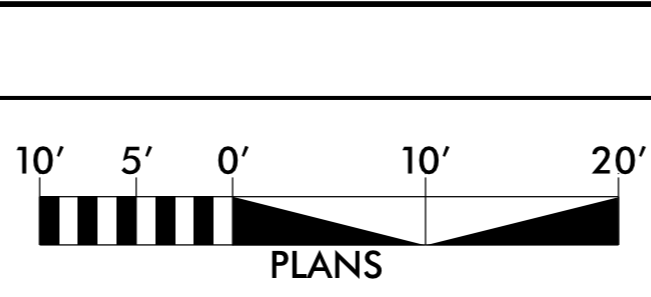


PROJECT REFERENCE NO.	SHEET NO.
R-5014	UC-7
DESIGNED BY: DMD	
DRAWN BY: DMD/MNG	
CHECKED BY: JDB	
APPROVED BY: CMT	
REVISED:	UTILITY CONSTRUCTION PLANS ONLY
NORTH CAROLINA DEPARTMENT OF TRANSPORTATION	
UTILITIES ENGINEERING SEC. PHONE: (919) 707-6690 FAX: (919) 250-4151	
UTILITY CONSTRUCTION	
DOCUMENT NOT CONSIDERED FINAL UNLESS ALL SIGNATURES COMPLETED	
THIS SHEET CORRESPONDS TO RDY-9	



NAD 83/NA 2011
 EXIST. 12" WATER LINE
 CONNECT TO EXIST. 12" WATER LINE WITH A 12" MJ SLEEVE
 -WL2- STA. 19+69.87
 -L- STA. 80+51.40, 15.51' RT
 PROP. THRUST COLLAR FOR 12" WATER LINE
 SEE DETAIL A ON SHEET UC-3E (TYP)



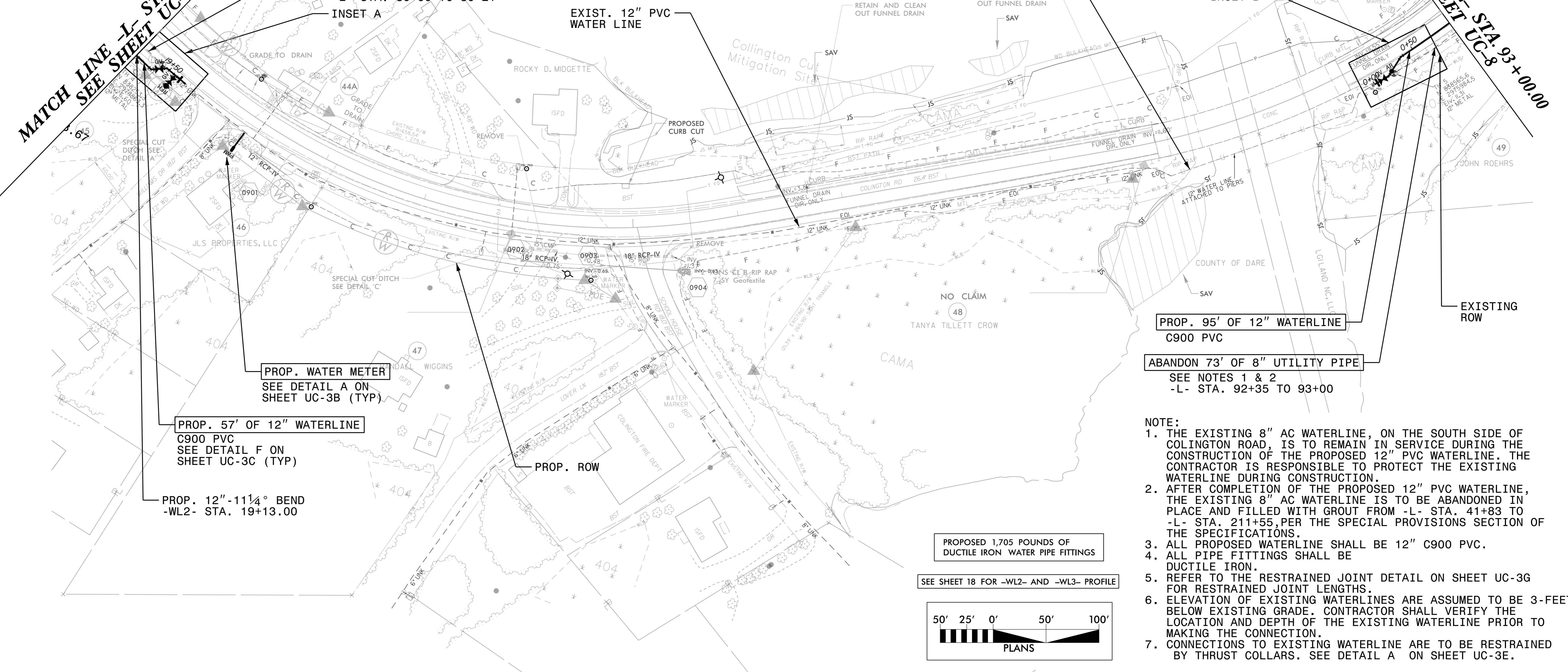
CONNECT TO EXIST. 12" WATER LINE WITH A 12" MJ SLEEVE
 -WL3- STA. 0+00.00
 -L- STA. 92+11.28, 22.37' RT
 EXIST. 12" WATER LINE

RELOCATE FIRE HYDRANT
 PROP. 15 LF OF 6" FIRE HYDRANT LEG
 PROP. 6" VALVE
 -L- STA. 80+39.23, 29.16' RT
 SEE DETAILS C AND D SHEET UC-3C (TYP)
 SEE DETAIL E ON SHEET UC-3B (TYP)

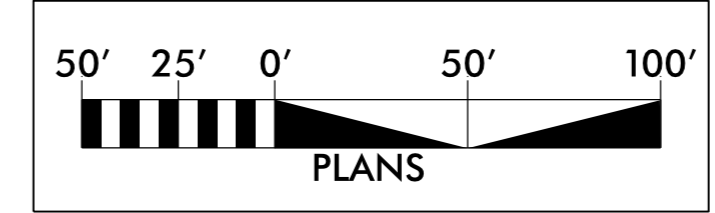
ABANDON 21' OF 8" UTILITY PIPE
 EXIST. 8" AC WATER LINE
 SEE NOTES 1 & 2
 -L- STA. 80+00 TO 80+21

MATCH LINE -L- STA. 80+00.00
 SEE SHEET UC-6

MATCH LINE -L- STA. 93+00.00
 SEE SHEET UC-8

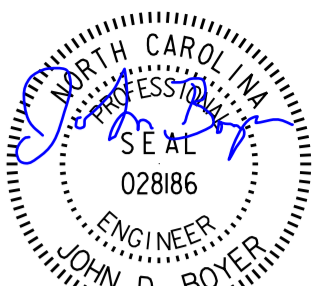


- NOTE:
1. THE EXISTING 8" AC WATERLINE, ON THE SOUTH SIDE OF COLINGTON ROAD, IS TO REMAIN IN SERVICE DURING THE CONSTRUCTION OF THE PROPOSED 12" PVC WATERLINE. THE CONTRACTOR IS RESPONSIBLE TO PROTECT THE EXISTING WATERLINE DURING CONSTRUCTION.
 2. AFTER COMPLETION OF THE PROPOSED 12" PVC WATERLINE, THE EXISTING 8" AC WATERLINE IS TO BE ABANDONED IN PLACE AND FILLED WITH GROUT FROM -L- STA. 41+83 TO -L- STA. 211+55, PER THE SPECIAL PROVISIONS SECTION OF THE SPECIFICATIONS.
 3. ALL PROPOSED WATERLINE SHALL BE 12" C900 PVC.
 4. ALL PIPE FITTINGS SHALL BE DUCTILE IRON.
 5. REFER TO THE RESTRAINED JOINT DETAIL ON SHEET UC-3G FOR RESTRAINED JOINT LENGTHS.
 6. ELEVATION OF EXISTING WATERLINES ARE ASSUMED TO BE 3-FEET BELOW EXISTING GRADE. CONTRACTOR SHALL VERIFY THE LOCATION AND DEPTH OF THE EXISTING WATERLINE PRIOR TO MAKING THE CONNECTION.
 7. CONNECTIONS TO EXISTING WATERLINE ARE TO BE RESTRAINED BY THRUST COLLARS. SEE DETAIL A ON SHEET UC-3E.



REVISIONS

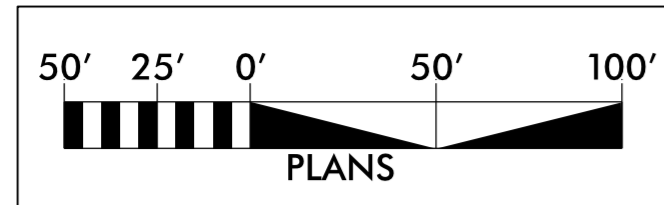
8/17/99
 SYSTEMTIME
 UC:\proj\5014_UL_UC7_psh.dgn
 USER: GYANTMN

PROJECT REFERENCE NO.	SHEET NO.
R-5014	UC-8
DESIGNED BY: DMD	
DRAWN BY: DMD/MNG	
CHECKED BY: JDB	
APPROVED BY: CMT	
REVISED:	UTILITY CONSTRUCTION PLANS ONLY
NORTH CAROLINA DEPARTMENT OF TRANSPORTATION UTILITIES ENGINEERING SEC. PHONE: (919) 707-6690 FAX: (919) 250-4151	

UTILITY CONSTRUCTION

DOCUMENT NOT CONSIDERED FINAL UNLESS ALL SIGNATURES COMPLETED

THIS SHEET CORRESPONDS TO RDY-10



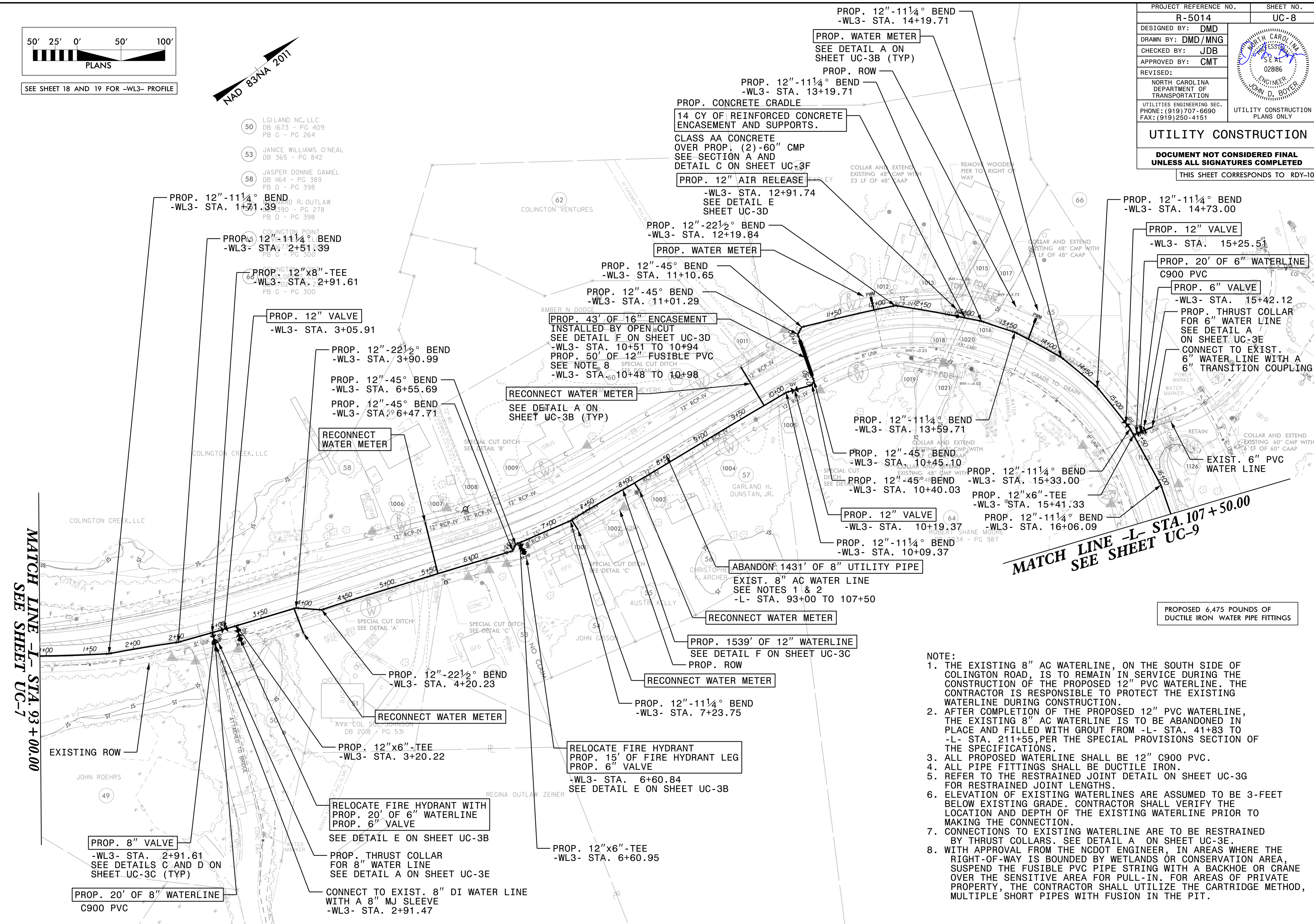
SEE SHEET 18 AND 19 FOR -WL3- PROFILE



- 50 LGILAND NC, LLC
DB 1673 - PG 409
PB G - PG 264
- 53 JANICE WILLIAMS O'NEAL
DB 365 - PG 842
- 58 JASPER DONNIE GAMEL
DB 1164 - PG 389
PB D - PG 398
- WARD R. OUTLAW
DB 2390 - PG 278
PB D - PG 398

MATCH LINE -L- STA. 93+00.00
SEE SHEET UC-7

MATCH LINE -L- STA. 107+50.00
SEE SHEET UC-9



PROPOSED 6,475 POUNDS OF DUCTILE IRON WATER PIPE FITTINGS

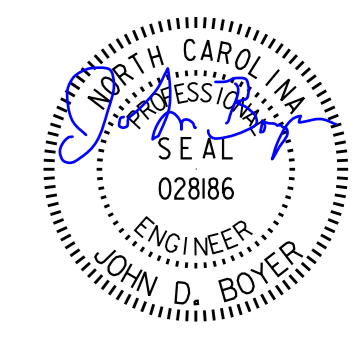
- NOTE:**
- THE EXISTING 8" AC WATERLINE, ON THE SOUTH SIDE OF COLINGTON ROAD, IS TO REMAIN IN SERVICE DURING THE CONSTRUCTION OF THE PROPOSED 12" PVC WATERLINE. THE CONTRACTOR IS RESPONSIBLE TO PROTECT THE EXISTING WATERLINE DURING CONSTRUCTION.
 - AFTER COMPLETION OF THE PROPOSED 12" PVC WATERLINE, THE EXISTING 8" AC WATERLINE IS TO BE ABANDONED IN PLACE AND FILLED WITH GROUT FROM -L- STA. 41+83 TO -L- STA. 211+55, PER THE SPECIAL PROVISIONS SECTION OF THE SPECIFICATIONS.
 - ALL PROPOSED WATERLINE SHALL BE 12" C900 PVC.
 - ALL PIPE FITTINGS SHALL BE DUCTILE IRON.
 - REFER TO THE RESTRAINED JOINT DETAIL ON SHEET UC-3G FOR RESTRAINED JOINT LENGTHS.
 - ELEVATION OF EXISTING WATERLINES ARE ASSUMED TO BE 3- FEET BELOW EXISTING GRADE. CONTRACTOR SHALL VERIFY THE LOCATION AND DEPTH OF THE EXISTING WATERLINE PRIOR TO MAKING THE CONNECTION.
 - CONNECTIONS TO EXISTING WATERLINE ARE TO BE RESTRAINED BY THRUST COLLARS. SEE DETAIL A ON SHEET UC-3E.
 - WITH APPROVAL FROM THE NCDOT ENGINEER, IN AREAS WHERE THE RIGHT-OF-WAY IS BOUNDED BY WETLANDS OR CONSERVATION AREA, SUSPEND THE FUSIBLE PVC PIPE STRING WITH A BACKHOE OR CRANE OVER THE SENSITIVE AREA FOR PULL-IN. FOR AREAS OF PRIVATE PROPERTY, THE CONTRACTOR SHALL UTILIZE THE CARTRIDGE METHOD, MULTIPLE SHORT PIPES WITH FUSION IN THE PIT.

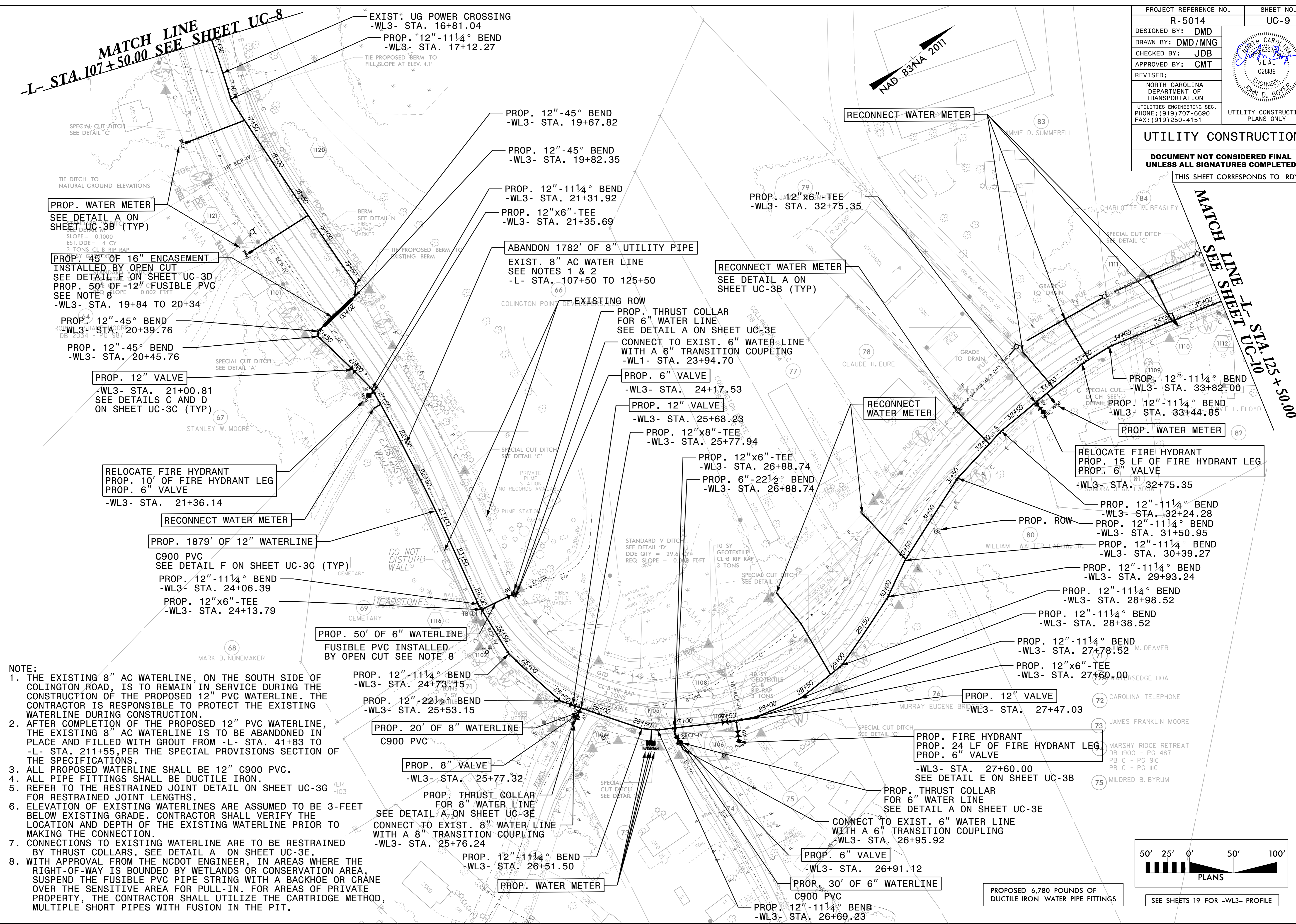
REVISIONS

8/17/99

8/17/99

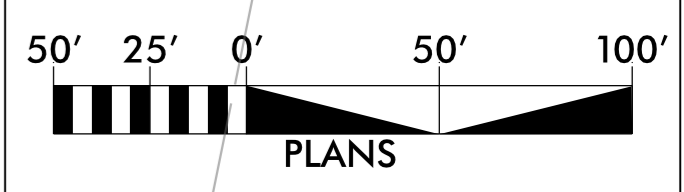
MATCH LINE
-L- STA. 107+50.00 SEE SHEET UC-8

PROJECT REFERENCE NO. R-5014	SHEET NO. UC-9
DESIGNED BY: DMD	
DRAWN BY: DMD/MNG	
CHECKED BY: JDB	
APPROVED BY: CMT	
REVISED:	UTILITY CONSTRUCTION PLANS ONLY
NORTH CAROLINA DEPARTMENT OF TRANSPORTATION UTILITIES ENGINEERING SEC. PHONE: (919) 707-6690 FAX: (919) 250-4151	
UTILITY CONSTRUCTION	
DOCUMENT NOT CONSIDERED FINAL UNLESS ALL SIGNATURES COMPLETED	
THIS SHEET CORRESPONDS TO RDY-11	



MATCH LINE
SEE SHEET UC-10
STA. 125+50.00

- NOTE:**
1. THE EXISTING 8" AC WATERLINE, ON THE SOUTH SIDE OF COLINGTON ROAD, IS TO REMAIN IN SERVICE DURING THE CONSTRUCTION OF THE PROPOSED 12" PVC WATERLINE. THE CONTRACTOR IS RESPONSIBLE TO PROTECT THE EXISTING WATERLINE DURING CONSTRUCTION.
 2. AFTER COMPLETION OF THE PROPOSED 12" PVC WATERLINE, THE EXISTING 8" AC WATERLINE IS TO BE ABANDONED IN PLACE AND FILLED WITH GROUT FROM -L- STA. 41+83 TO -L- STA. 211+55, PER THE SPECIAL PROVISIONS SECTION OF THE SPECIFICATIONS.
 3. ALL PROPOSED WATERLINE SHALL BE 12" C900 PVC.
 4. ALL PIPE FITTINGS SHALL BE DUCTILE IRON.
 5. REFER TO THE RESTRAINED JOINT DETAIL ON SHEET UC-3G FOR RESTRAINED JOINT LENGTHS.
 6. ELEVATION OF EXISTING WATERLINES ARE ASSUMED TO BE 3- FEET BELOW EXISTING GRADE. CONTRACTOR SHALL VERIFY THE LOCATION AND DEPTH OF THE EXISTING WATERLINE PRIOR TO MAKING THE CONNECTION.
 7. CONNECTIONS TO EXISTING WATERLINE ARE TO BE RESTRAINED BY THRUST COLLARS. SEE DETAIL A ON SHEET UC-3E.
 8. WITH APPROVAL FROM THE NCDOT ENGINEER, IN AREAS WHERE THE RIGHT-OF-WAY IS BOUNDED BY WETLANDS OR CONSERVATION AREA, SUSPEND THE FUSIBLE PVC PIPE STRING WITH A BACKHOE OR CRANE OVER THE SENSITIVE AREA FOR PULL-IN. FOR AREAS OF PRIVATE PROPERTY, THE CONTRACTOR SHALL UTILIZE THE CARTRIDGE METHOD, MULTIPLE SHORT PIPES WITH FUSION IN THE PIT.

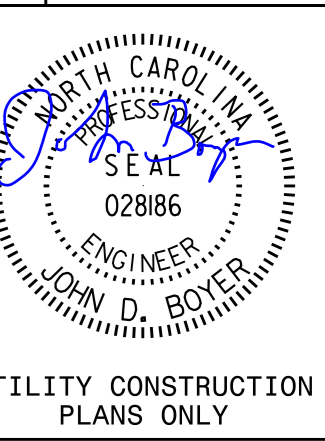


PROPOSED 6,780 POUNDS OF DUCTILE IRON WATER PIPE FITTINGS

SEE SHEETS 19 FOR -WL3- PROFILE

REVISIONS

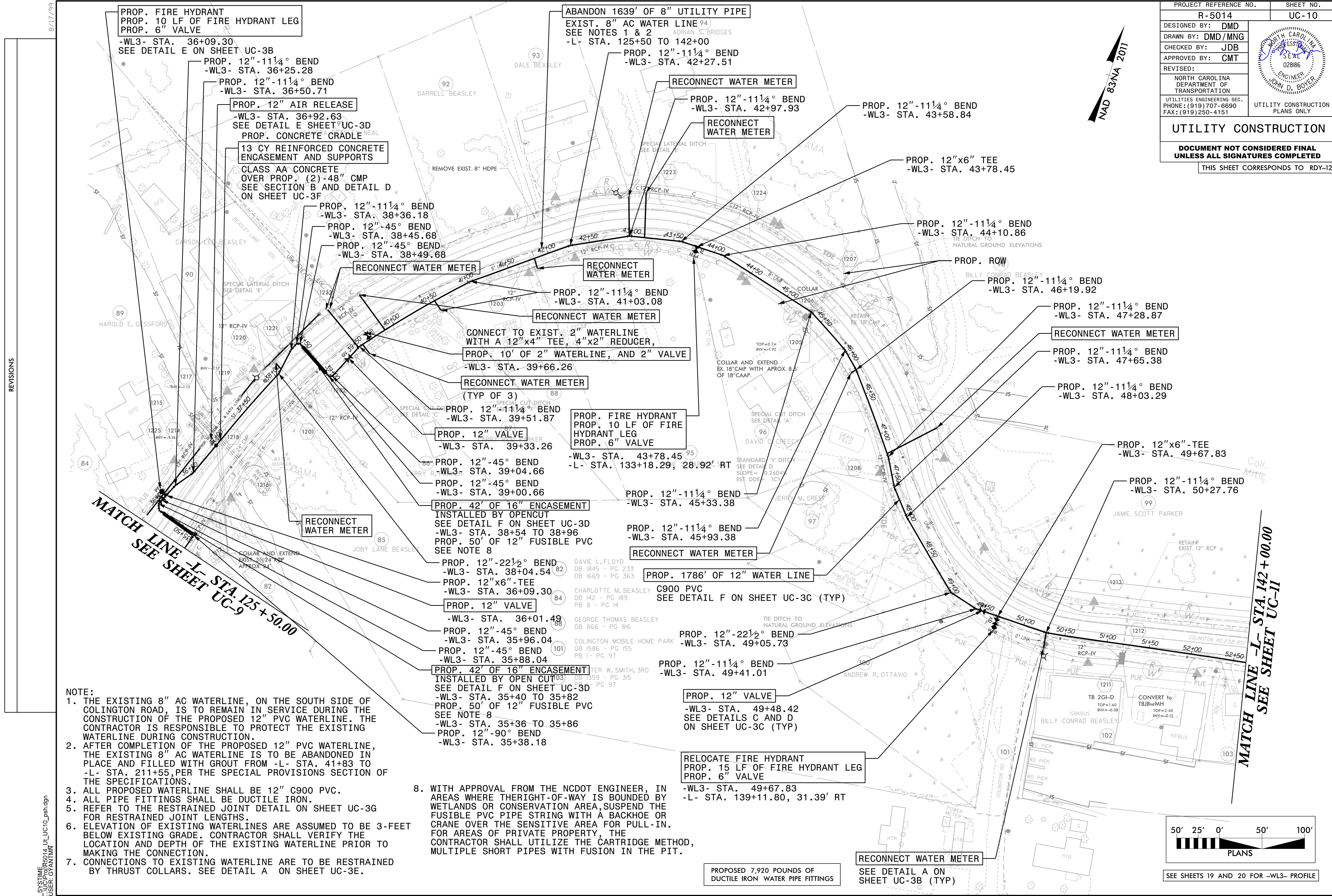
DESIGNED BY: DMD
DRAWN BY: DMD/MNG
CHECKED BY: JDB
APPROVED BY: CMT
REVISED:
NORTH CAROLINA DEPARTMENT OF TRANSPORTATION
UTILITIES ENGINEERING SEC.
PHONE: (919) 707-6690
FAX: (919) 250-4151



UTILITY CONSTRUCTION

DOCUMENT NOT CONSIDERED FINAL UNLESS ALL SIGNATURES COMPLETED

THIS SHEET CORRESPONDS TO RDY-12



PROP. FIRE HYDRANT
PROP. 10 LF OF FIRE HYDRANT LEG
PROP. 6" VALVE
-WL3- STA. 36+09.30
SEE DETAIL E ON SHEET UC-3B

ABANDON 1639' OF 8" UTILITY PIPE
EXIST. 8" AC WATER LINE
SEE NOTES 1 & 2
-L- STA. 125+50 TO 142+00

PROP. 12"-11 1/4" BEND
-WL3- STA. 36+25.28
PROP. 12"-11 1/4" BEND
-WL3- STA. 36+50.71

PROP. 12" AIR RELEASE
-WL3- STA. 36+92.63
SEE DETAIL E SHEET UC-3D
PROP. CONCRETE CRADLE

13 CY REINFORCED CONCRETE
ENCASEMENT AND SUPPORTS
CLASS AA CONCRETE
OVER PROP. (2)-48" CMP
SEE SECTION B AND DETAIL D
ON SHEET UC-3F

PROP. 12"-11 1/4" BEND
-WL3- STA. 38+36.18
PROP. 12"-45° BEND
-WL3- STA. 38+45.68
PROP. 12"-45° BEND
-WL3- STA. 38+49.68

RECONNECT WATER METER

RECONNECT WATER METER
PROP. 12"-11 1/4" BEND
-WL3- STA. 42+97.93

PROP. 12"-11 1/4" BEND
-WL3- STA. 43+58.84

PROP. 12"x6" TEE
-WL3- STA. 43+78.45

PROP. 12"-11 1/4" BEND
-WL3- STA. 44+10.86

PROP. ROW
PROP. 12"-11 1/4" BEND
-WL3- STA. 46+19.92

PROP. 12"-11 1/4" BEND
-WL3- STA. 47+28.87

RECONNECT WATER METER

PROP. 12"-11 1/4" BEND
-WL3- STA. 47+65.38

PROP. 12"-11 1/4" BEND
-WL3- STA. 48+03.29

PROP. 12"x6"-TEE
-WL3- STA. 49+67.83

PROP. 12"-11 1/4" BEND
-WL3- STA. 50+27.76

CONNECT TO EXIST. 2" WATERLINE
WITH A 12"x4" TEE, 4"x2" REDUCER,
PROP. 10' OF 2" WATERLINE, AND 2" VALVE
-WL3- STA. 39+66.26

RECONNECT WATER METER
(TYP OF 3)

PROP. 12"-11 1/4" BEND
-WL3- STA. 39+51.87

PROP. 12" VALVE
-WL3- STA. 39+33.26

PROP. FIRE HYDRANT
PROP. 10 LF OF FIRE
HYDRANT LEG
PROP. 6" VALVE
-WL3- STA. 43+78.45
-L- STA. 133+18.29, 28.92' RT

PROP. 12"-45° BEND
-WL3- STA. 39+04.66

PROP. 12"-45° BEND
-WL3- STA. 39+00.66

PROP. 12"-11 1/4" BEND
-WL3- STA. 45+33.38

PROP. 12"-11 1/4" BEND
-WL3- STA. 45+93.38

RECONNECT WATER METER

PROP. 12"-22 1/2" BEND
-WL3- STA. 38+04.54

PROP. 12"x6"-TEE
-WL3- STA. 36+09.30

PROP. 12" VALVE
-WL3- STA. 36+01.49

PROP. 12"-45° BEND
-WL3- STA. 35+96.04

PROP. 12"-45° BEND
-WL3- STA. 35+88.04

PROP. 42' OF 16" ENCASEMENT
INSTALLED BY OPEN CUT
SEE DETAIL F ON SHEET UC-3D
-WL3- STA. 35+40 TO 35+82
PROP. 50' OF 12" FUSIBLE PVC
SEE NOTE 8
-WL3- STA. 35+36 TO 35+86
PROP. 12"-90° BEND
-WL3- STA. 35+38.18

PROP. 1786' OF 12" WATER LINE
C900 PVC
SEE DETAIL F ON SHEET UC-3C (TYP)

PROP. 12"-22 1/2" BEND
-WL3- STA. 49+05.73

PROP. 12"-11 1/4" BEND
-WL3- STA. 49+41.01

PROP. 12" VALVE
-WL3- STA. 49+48.42
SEE DETAILS C AND D
ON SHEET UC-3C (TYP)

RELOCATE FIRE HYDRANT
PROP. 15 LF OF FIRE HYDRANT LEG
PROP. 6" VALVE
-WL3- STA. 49+67.83
-L- STA. 139+11.80, 31.39' RT

PROPOSED 7,920 POUNDS OF
DUCTILE IRON WATER PIPE FITTINGS

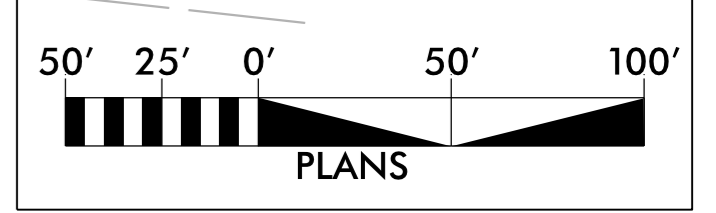
RECONNECT WATER METER
SEE DETAIL A ON
SHEET UC-3B (TYP)

- NOTE:
1. THE EXISTING 8" AC WATERLINE, ON THE SOUTH SIDE OF COLINGTON ROAD, IS TO REMAIN IN SERVICE DURING THE CONSTRUCTION OF THE PROPOSED 12" PVC WATERLINE. THE CONTRACTOR IS RESPONSIBLE TO PROTECT THE EXISTING WATERLINE DURING CONSTRUCTION.
 2. AFTER COMPLETION OF THE PROPOSED 12" PVC WATERLINE, THE EXISTING 8" AC WATERLINE IS TO BE ABANDONED IN PLACE AND FILLED WITH GROUT FROM -L- STA. 41+83 TO -L- STA. 211+55, PER THE SPECIAL PROVISIONS SECTION OF THE SPECIFICATIONS.
 3. ALL PROPOSED WATERLINE SHALL BE 12" C900 PVC.
 4. ALL PIPE FITTINGS SHALL BE DUCTILE IRON.
 5. REFER TO THE RESTRAINED JOINT DETAIL ON SHEET UC-3G FOR RESTRAINED JOINT LENGTHS.
 6. ELEVATION OF EXISTING WATERLINES ARE ASSUMED TO BE 3- FEET BELOW EXISTING GRADE. CONTRACTOR SHALL VERIFY THE LOCATION AND DEPTH OF THE EXISTING WATERLINE PRIOR TO MAKING THE CONNECTION.
 7. CONNECTIONS TO EXISTING WATERLINE ARE TO BE RESTRAINED BY THRUST COLLARS. SEE DETAIL A ON SHEET UC-3E.

8. WITH APPROVAL FROM THE NCDOT ENGINEER, IN AREAS WHERE THERIGHT-OF-WAY IS BOUNDED BY WETLANDS OR CONSERVATION AREA, SUSPEND THE FUSIBLE PVC PIPE STRING WITH A BACKHOE OR CRANE OVER THE SENSITIVE AREA FOR PULL-IN. FOR AREAS OF PRIVATE PROPERTY, THE CONTRACTOR SHALL UTILIZE THE CARTRIDGE METHOD, MULTIPLE SHORT PIPES WITH FUSION IN THE PIT.

MATCH LINE -I- STA. 125+50.00
SEE SHEET UC-9

MATCH LINE -L- STA. 142+00.00
SEE SHEET UC-11



SEE SHEETS 19 AND 20 FOR -WL3- PROFILE

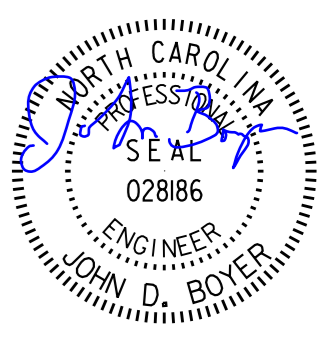
REVISIONS

8/17/99
SYSTEM: J:\UC\Projects\5014_UC-10_psh.dgn
USER: GYANTM

8/17/99

NOTE:

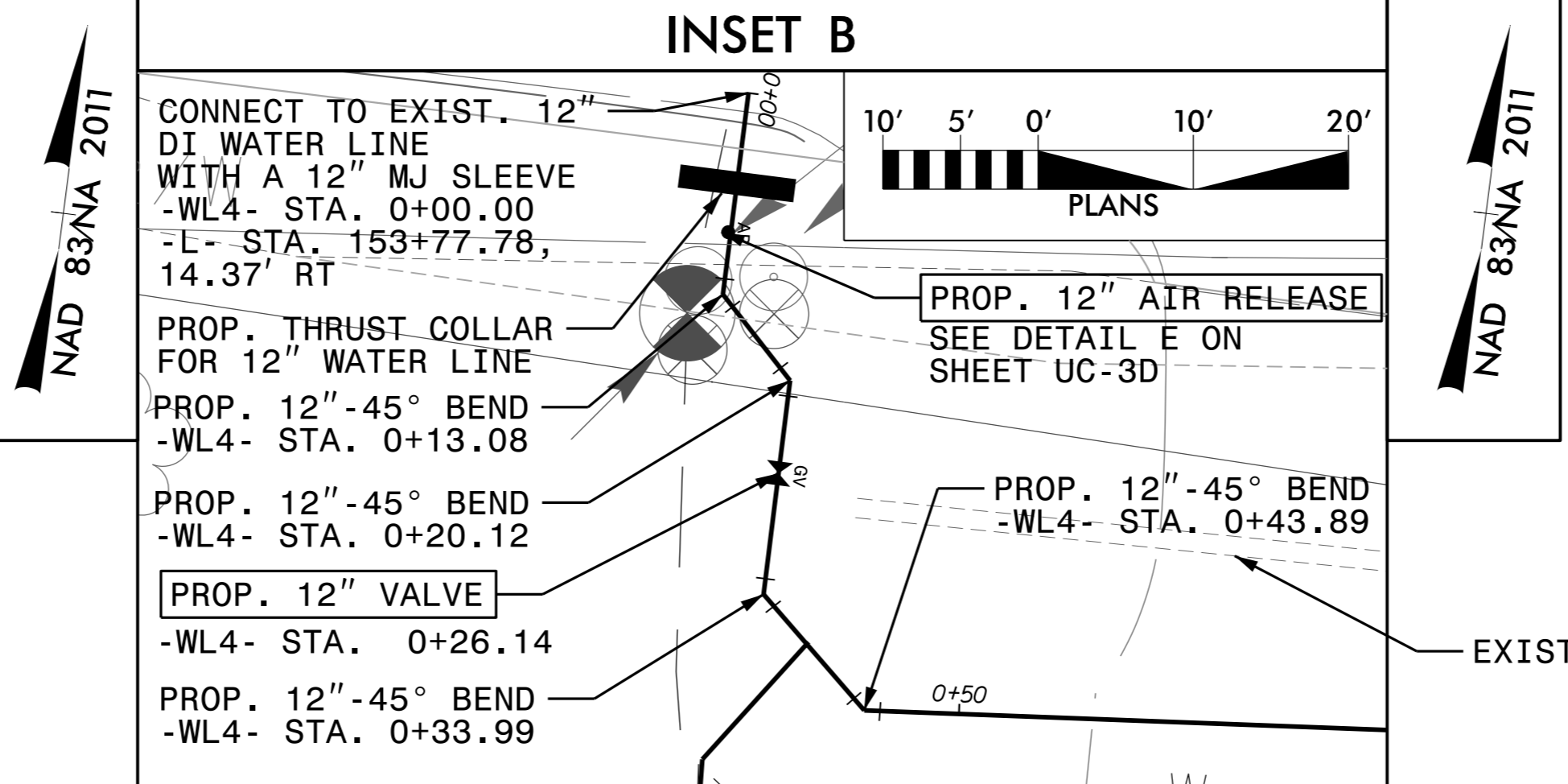
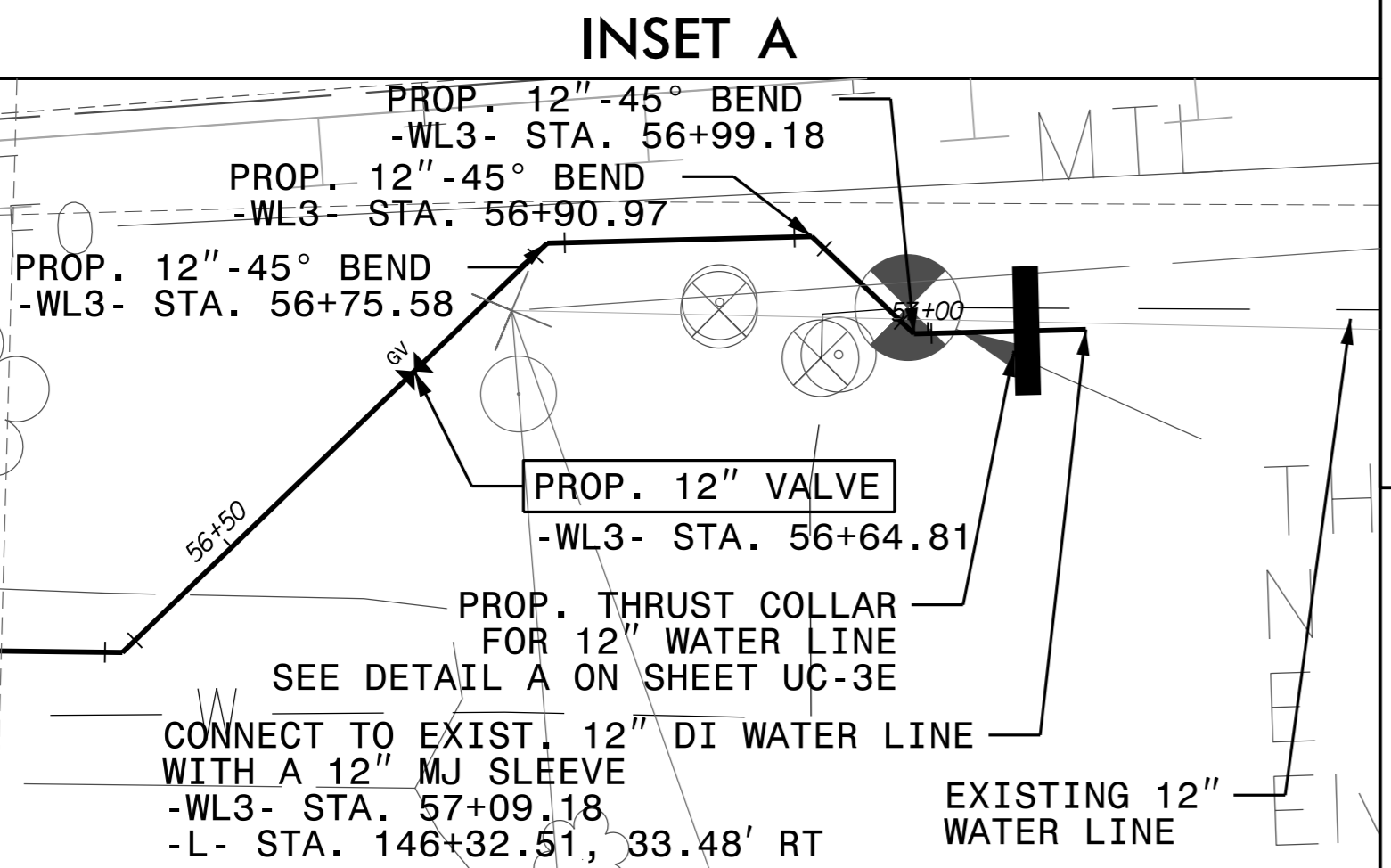
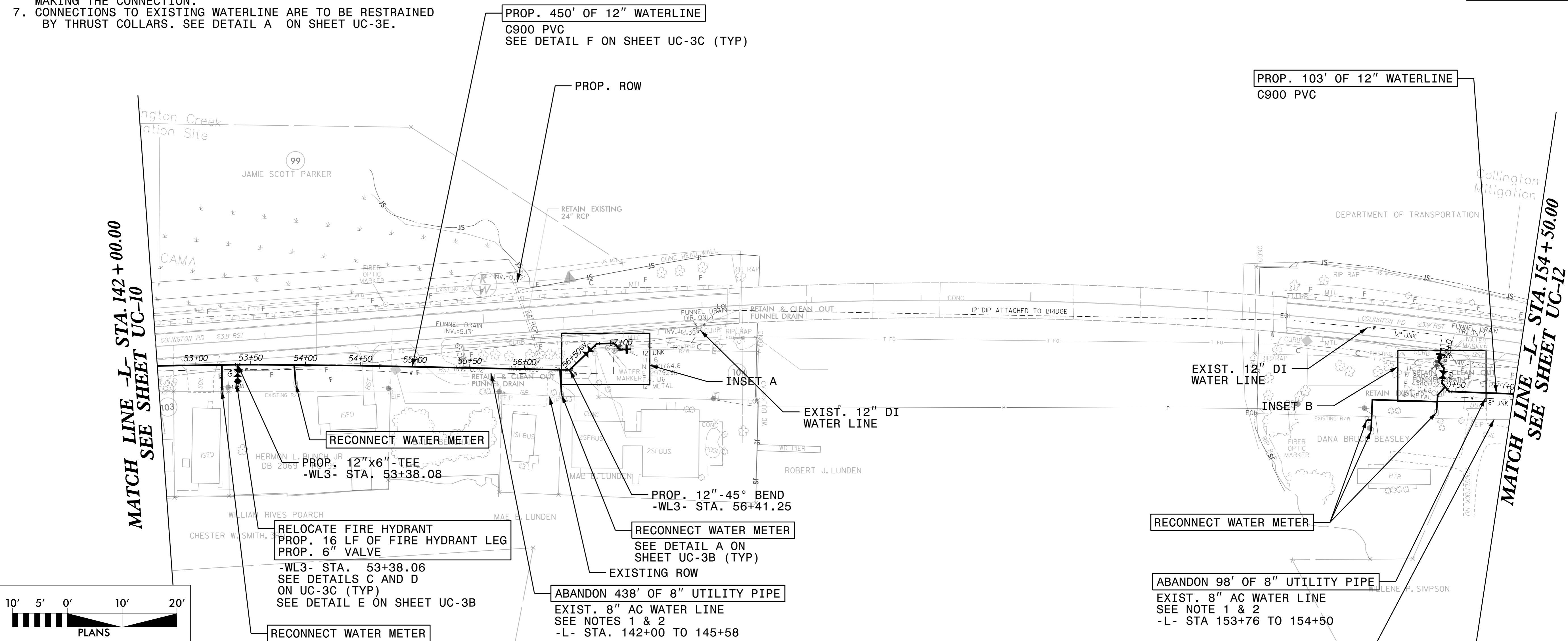
1. THE EXISTING 8" AC WATERLINE, ON THE SOUTH SIDE OF COLINGTON ROAD, IS TO REMAIN IN SERVICE DURING THE CONSTRUCTION OF THE PROPOSED 12" PVC WATERLINE. THE CONTRACTOR IS RESPONSIBLE TO PROTECT THE EXISTING WATERLINE DURING CONSTRUCTION.
2. AFTER COMPLETION OF THE PROPOSED 12" PVC WATERLINE, THE EXISTING 8" AC WATERLINE IS TO BE ABANDONED IN PLACE AND FILLED WITH GROUT FROM -L- STA. 41+83 TO -L- STA. 211+55, PER THE SPECIAL PROVISIONS SECTION OF THE SPECIFICATIONS.
3. ALL PROPOSED WATERLINE SHALL BE 12" C900 PVC.
4. ALL PIPE FITTINGS SHALL BE DUCTILE IRON.
5. REFER TO THE RESTRAINED JOINT DETAIL ON SHEET UC-3G FOR RESTRAINED JOINT LENGTHS.
6. ELEVATION OF EXISTING WATERLINES ARE ASSUMED TO BE 3- FEET BELOW EXISTING GRADE. CONTRACTOR SHALL VERIFY THE LOCATION AND DEPTH OF THE EXISTING WATERLINE PRIOR TO MAKING THE CONNECTION.
7. CONNECTIONS TO EXISTING WATERLINE ARE TO BE RESTRAINED BY THRUST COLLARS. SEE DETAIL A ON SHEET UC-3E.

PROJECT REFERENCE NO.	R-5014	SHEET NO.	UC-11
DESIGNED BY:	DMD		
DRAWN BY:	DMD/MNG		
CHECKED BY:	JDB		
APPROVED BY:	CMT		
REVISED:			
NORTH CAROLINA DEPARTMENT OF TRANSPORTATION		UTILITY CONSTRUCTION PLANS ONLY	

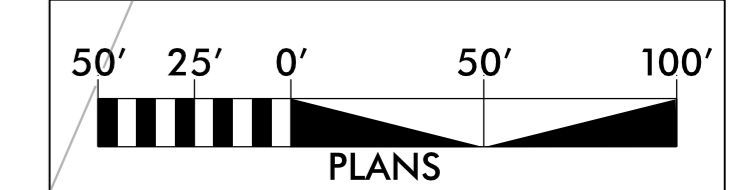
UTILITY CONSTRUCTION

DOCUMENT NOT CONSIDERED FINAL UNLESS ALL SIGNATURES COMPLETED

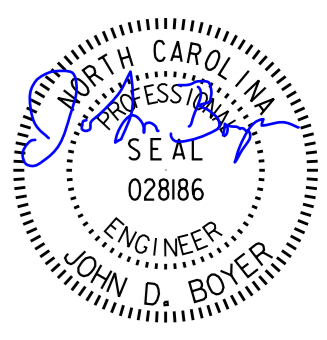
THIS SHEET CORRESPONDS TO RDY-13



PROPOSED 2,765 POUNDS OF DUCTILE IRON WATER PIPE FITTINGS



SEE SHEET 20 FOR -WL3- AND -WL4- PROFILE

PROJECT REFERENCE NO.	SHEET NO.
R-5014	UC-12
DESIGNED BY: DMD	
DRAWN BY: DMD/MNG	
CHECKED BY: JDB	
APPROVED BY: CMT	
REVISED:	
NORTH CAROLINA DEPARTMENT OF TRANSPORTATION	
UTILITY ENGINEERING SEC. PHONE: (919) 707-6690 FAX: (919) 250-4151	
UTILITY CONSTRUCTION PLANS ONLY	

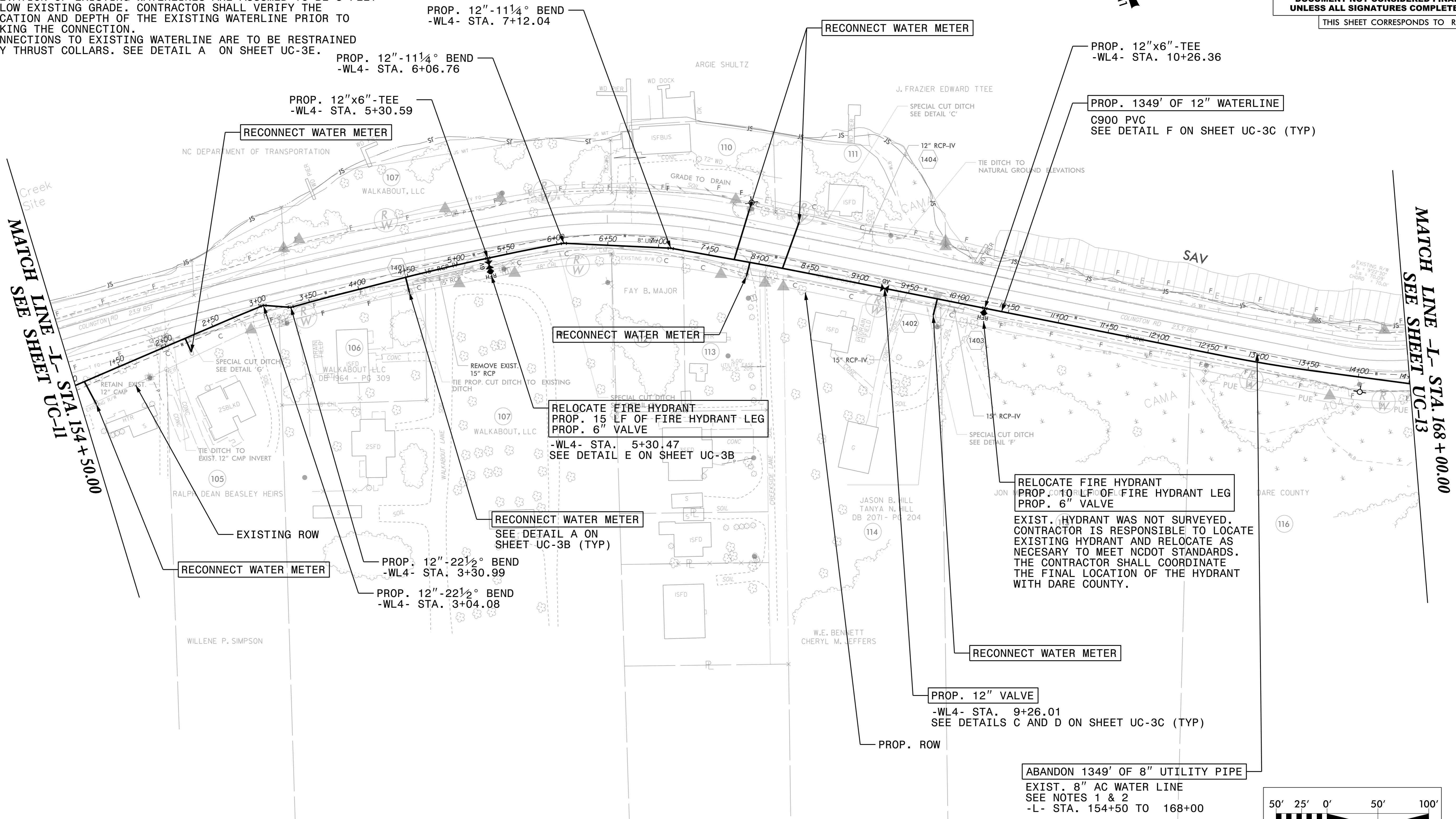
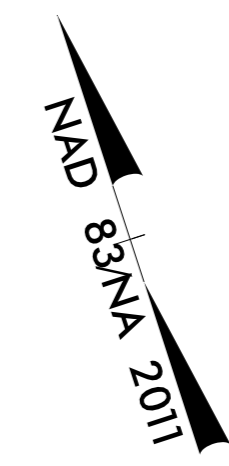
UTILITY CONSTRUCTION

DOCUMENT NOT CONSIDERED FINAL UNLESS ALL SIGNATURES COMPLETED

THIS SHEET CORRESPONDS TO RDY-14

8/17/99

- NOTE:**
1. THE EXISTING 8" AC WATERLINE, ON THE SOUTH SIDE OF COLINGTON ROAD, IS TO REMAIN IN SERVICE DURING THE CONSTRUCTION OF THE PROPOSED 12" PVC WATERLINE. THE CONTRACTOR IS RESPONSIBLE TO PROTECT THE EXISTING WATERLINE DURING CONSTRUCTION.
 2. AFTER COMPLETION OF THE PROPOSED 12" PVC WATERLINE, THE EXISTING 8" AC WATERLINE IS TO BE ABANDONED IN PLACE AND FILLED WITH GROUT FROM -L- STA. 41+83 TO -L- STA. 211+55, PER THE SPECIAL PROVISIONS SECTION OF THE SPECIFICATIONS.
 3. ALL PROPOSED WATERLINE SHALL BE 12" C900 PVC.
 4. ALL PIPE FITTINGS SHALL BE DUCTILE IRON.
 5. REFER TO THE RESTRAINED JOINT DETAIL ON SHEET UC-3G FOR RESTRAINED JOINT LENGTHS.
 6. ELEVATION OF EXISTING WATERLINES ARE ASSUMED TO BE 3-FEET BELOW EXISTING GRADE. CONTRACTOR SHALL VERIFY THE LOCATION AND DEPTH OF THE EXISTING WATERLINE PRIOR TO MAKING THE CONNECTION.
 7. CONNECTIONS TO EXISTING WATERLINE ARE TO BE RESTRAINED BY THRUST COLLARS. SEE DETAIL A ON SHEET UC-3E.



MATCH LINE -L- STA. 154+50.00
SEE SHEET UC-11

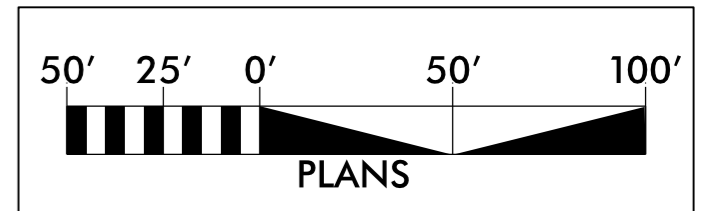
MATCH LINE -L- STA. 168+00.00
SEE SHEET UC-13

REVISIONS

SYSTEM: UC12 UC12 UC12_esh.dgn
USER: GYANTM

ABANDON 1349' OF 8" UTILITY PIPE
EXIST. 8" AC WATER LINE
SEE NOTES 1 & 2
-L- STA. 154+50 TO 168+00

PROPOSED 1,530 POUNDS OF
DUCTILE IRON WATER PIPE FITTINGS



SEE SHEETS 20 AND 21 FOR -WL4- PROFILE