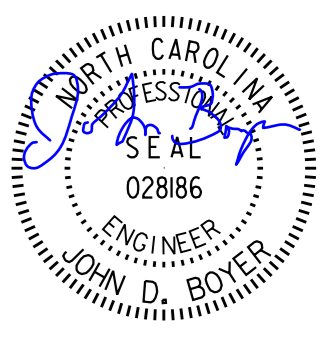


PROJECT REFERENCE NO.	SHEET NO.
R-5014	UC-14
DESIGNED BY: DMD	
DRAWN BY: DMD/MNG	
CHECKED BY: JDB	
APPROVED BY: CMT	
REVISED:	
NORTH CAROLINA DEPARTMENT OF TRANSPORTATION	
UTILITIES ENGINEERING SEC. PHONE: (919) 707-6690 FAX: (919) 250-4151	
UTILITY CONSTRUCTION PLANS ONLY	

**UTILITY CONSTRUCTION**

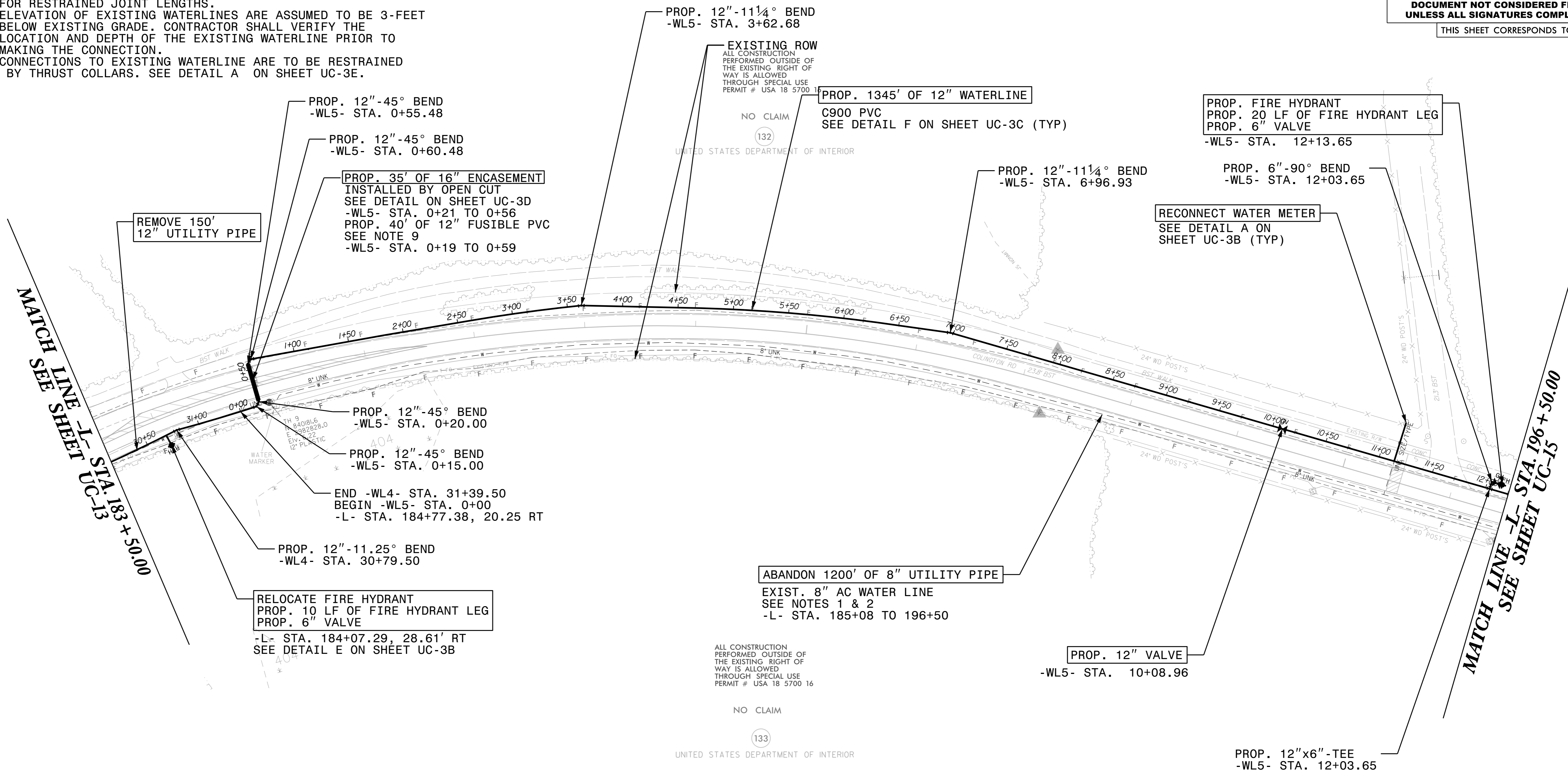
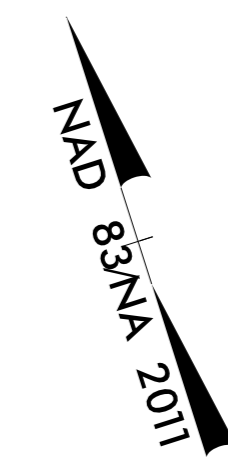
**DOCUMENT NOT CONSIDERED FINAL UNLESS ALL SIGNATURES COMPLETED**

THIS SHEET CORRESPONDS TO RDY-16

**NOTE:**

- THE EXISTING 8" AC WATERLINE, ON THE SOUTH SIDE OF COLINGTON ROAD, IS TO REMAIN IN SERVICE DURING THE CONSTRUCTION OF THE PROPOSED 12" PVC WATERLINE. THE CONTRACTOR IS RESPONSIBLE TO PROTECT THE EXISTING WATERLINE DURING CONSTRUCTION.
- AFTER COMPLETION OF THE PROPOSED 12" PVC WATERLINE, THE EXISTING 8" AC WATERLINE IS TO BE ABANDONED IN PLACE AND FILLED WITH GROUT FROM -L- STA. 41+83 TO -L- STA. 211+55, PER THE SPECIAL PROVISIONS SECTION OF THE SPECIFICATIONS.
- ALL PROPOSED WATERLINE SHALL BE 12" C900 PVC.
- ALL PIPE FITTINGS SHALL BE DUCTILE IRON.
- REFER TO THE RESTRAINED JOINT DETAIL ON SHEET UC-3G FOR RESTRAINED JOINT LENGTHS.
- ELEVATION OF EXISTING WATERLINES ARE ASSUMED TO BE 3-FEET BELOW EXISTING GRADE. CONTRACTOR SHALL VERIFY THE LOCATION AND DEPTH OF THE EXISTING WATERLINE PRIOR TO MAKING THE CONNECTION.
- CONNECTIONS TO EXISTING WATERLINE ARE TO BE RESTRAINED BY THRUST COLLARS. SEE DETAIL A ON SHEET UC-3E.

- CONTRACTOR TO NOTIFY NCDOT AT LEAST 24 HOURS BEFORE EACH DAY WORK IS INTENDED NEAR THE AIRPORT RUNWAY (-L- STA. 191+50 TO 196+50). NCDOT WILL TAKE NECESSARY ACTIONS TO GET A NOTICE TO AIRMEN (NOTAM) ISSUED. CONTRACTOR WILL CONFIRM WITH NCDOT THAT A NOTAM HAS BEEN ISSUED BEFORE COMMENCING WORK NEAR THE AIRPORT RUNWAY.
- WITH APPROVAL FROM THE NCDOT ENGINEER, IN AREAS WHERE THE RIGHT-OF-WAY IS BOUNDED BY WETLANDS OR CONSERVATION AREA, SUSPEND THE FUSIBLE PVC PIPE STRING WITH A BACKHOE OR CRANE OVER THE SENSITIVE AREA FOR PULL-IN. FOR AREAS OF PRIVATE PROPERTY, THE CONTRACTOR SHALL UTILIZE THE CARTRIDGE METHOD, MULTIPLE SHORT PIPES WITH FUSION IN THE PIT.



REMOVE 150'  
12" UTILITY PIPE

PROP. 12"-45° BEND  
-WL5- STA. 0+55.48

PROP. 12"-45° BEND  
-WL5- STA. 0+60.48

PROP. 35' OF 16" ENCASEMENT  
INSTALLED BY OPEN CUT  
SEE DETAIL ON SHEET UC-3D  
-WL5- STA. 0+21 TO 0+56  
PROP. 40' OF 12" FUSIBLE PVC  
SEE NOTE 9  
-WL5- STA. 0+19 TO 0+59

PROP. 12"-11¼° BEND  
-WL5- STA. 3+62.68

EXISTING ROW  
ALL CONSTRUCTION PERFORMED OUTSIDE OF THE EXISTING RIGHT OF WAY IS ALLOWED THROUGH SPECIAL USE PERMIT # USA 18 5700 11

PROP. 1345' OF 12" WATERLINE  
C900 PVC  
SEE DETAIL F ON SHEET UC-3C (TYP)

PROP. FIRE HYDRANT  
PROP. 20 LF OF FIRE HYDRANT LEG  
PROP. 6" VALVE  
-WL5- STA. 12+13.65

PROP. 12"-11¼° BEND  
-WL5- STA. 6+96.93

PROP. 6"-90° BEND  
-WL5- STA. 12+03.65

RECONNECT WATER METER  
SEE DETAIL A ON SHEET UC-3B (TYP)

MATCH LINE -L- STA. 183+50.00  
SEE SHEET UC-13

PROP. 12"-45° BEND  
-WL5- STA. 0+20.00

PROP. 12"-45° BEND  
-WL5- STA. 0+15.00

END -WL4- STA. 31+39.50  
BEGIN -WL5- STA. 0+00  
-L- STA. 184+77.38, 20.25 RT

PROP. 12"-11.25° BEND  
-WL4- STA. 30+79.50

RELOCATE FIRE HYDRANT  
PROP. 10 LF OF FIRE HYDRANT LEG  
PROP. 6" VALVE  
-L- STA. 184+07.29, 28.61' RT  
SEE DETAIL E ON SHEET UC-3B

ABANDON 1200' OF 8" UTILITY PIPE  
EXIST. 8" AC WATER LINE  
SEE NOTES 1 & 2  
-L- STA. 185+08 TO 196+50

PROP. 12" VALVE  
-WL5- STA. 10+08.96

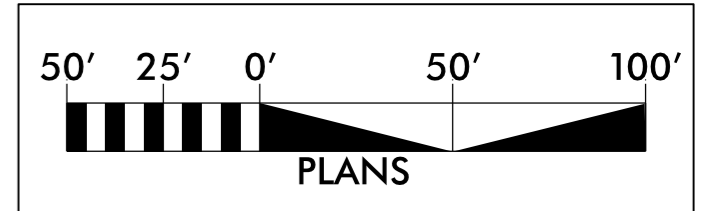
PROP. 12"x6"-TEE  
-WL5- STA. 12+03.65

ALL CONSTRUCTION PERFORMED OUTSIDE OF THE EXISTING RIGHT OF WAY IS ALLOWED THROUGH SPECIAL USE PERMIT # USA 18 5700 16

NO CLAIM



UNITED STATES DEPARTMENT OF INTERIOR



PROPOSED 1,930 POUNDS OF DUCTILE IRON WATER PIPE FITTINGS

SEE SHEET 21 FOR -WL4- PROFILE

SEE SHEETS 21 AND 22 FOR -WL5- PROFILE

REVISIONS

8/17/99

SYSTEM: R5014\_UJ\_UC14\_psh.dgn  
USER: GYANTMN